

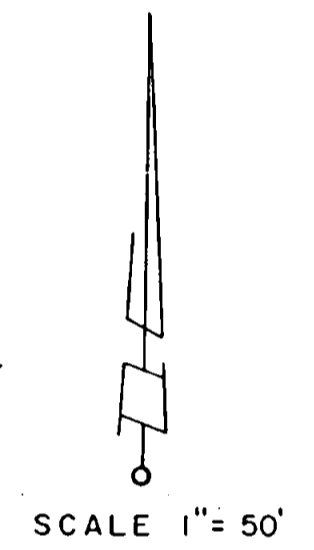
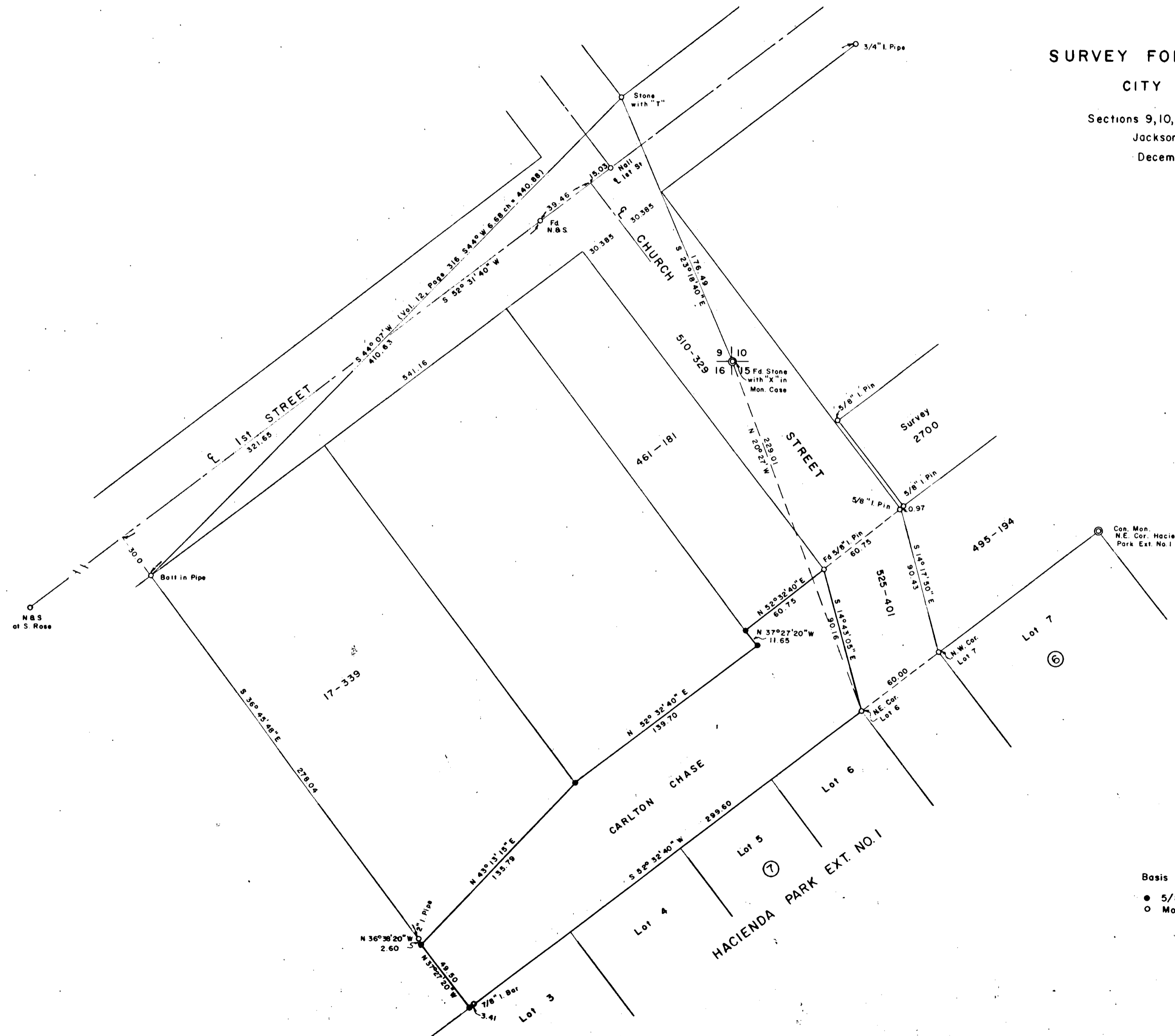
**SURVEY FOR CARLTON CHASE**

**CITY OF PHOENIX**

Sections 9, 10, 15, 16 T. 38 S., R. 1 W., W.M.

Jackson County, Oregon

December 26, 1965



REGISTERED  
**OREGON**  
 LAND SURVEYOR  
*Wesley Thomas*  
 1965  
**WESLEY THOMAS**  
 509

RECEIVED  
 JACKSON  
 JAN 26 1966  
 COUNTY  
 SURVEYOR

Basis of Bearing: HACIENDA PARK EXT. NO. 1  
 ● 5/8 x 24" I. Pin set flush  
 ○ Monument found

SURVEY NARRATIVE TO COMPLY WITH O.R.S. 209.250  
 REVISED BY CHAPTER 555, O.L. 1963

FOR: Carlton Chase  
 Box 216  
 Phoenix, Oregon

PURPOSE: To survey and monument a residential parcel in the  
 City of Phoenix, Oregon.

PROCEDURE: A search was made for any monuments which might  
 have a bearing on the location of the parcel in  
 question, and survey ties were made accordingly,  
 as shown on the plat. It was found that the lead  
 ties on various deeds are apparently in error, and  
 do not correspond with monuments found in the field,  
 or occupancy. For example, the lead tie to Fore-  
 mans' Northeast corner, as recorded in Deed Vol.  
 12, page 316, Jackson County Deed Records, is desc-  
 ribed as S 44°W, 6.68 chains (440.88 feet) from a  
 stone with "T". However a tie to a bolt, in a very  
 old buried pipe, purported to be at or near the  
 location of Foremans' Northeast corner measures  
 S 44°07' W, 410.63 feet from said stone, or a diff-  
 erence of 30.25 feet.

Ties were also made to the corner monuments adjacent  
 to Church Street, as set in Recorded Survey No. 2700.  
 Corner monuments set by L.N. Dow for the City of  
 Phoenix in monumenting Church Street were recovered,  
 being 0.97 feet westerly from the corner set in  
 Survey No. 2700, as shown on the accompanying plat.  
 The subject property was surveyed and monumented as  
 shown on the Plat.

