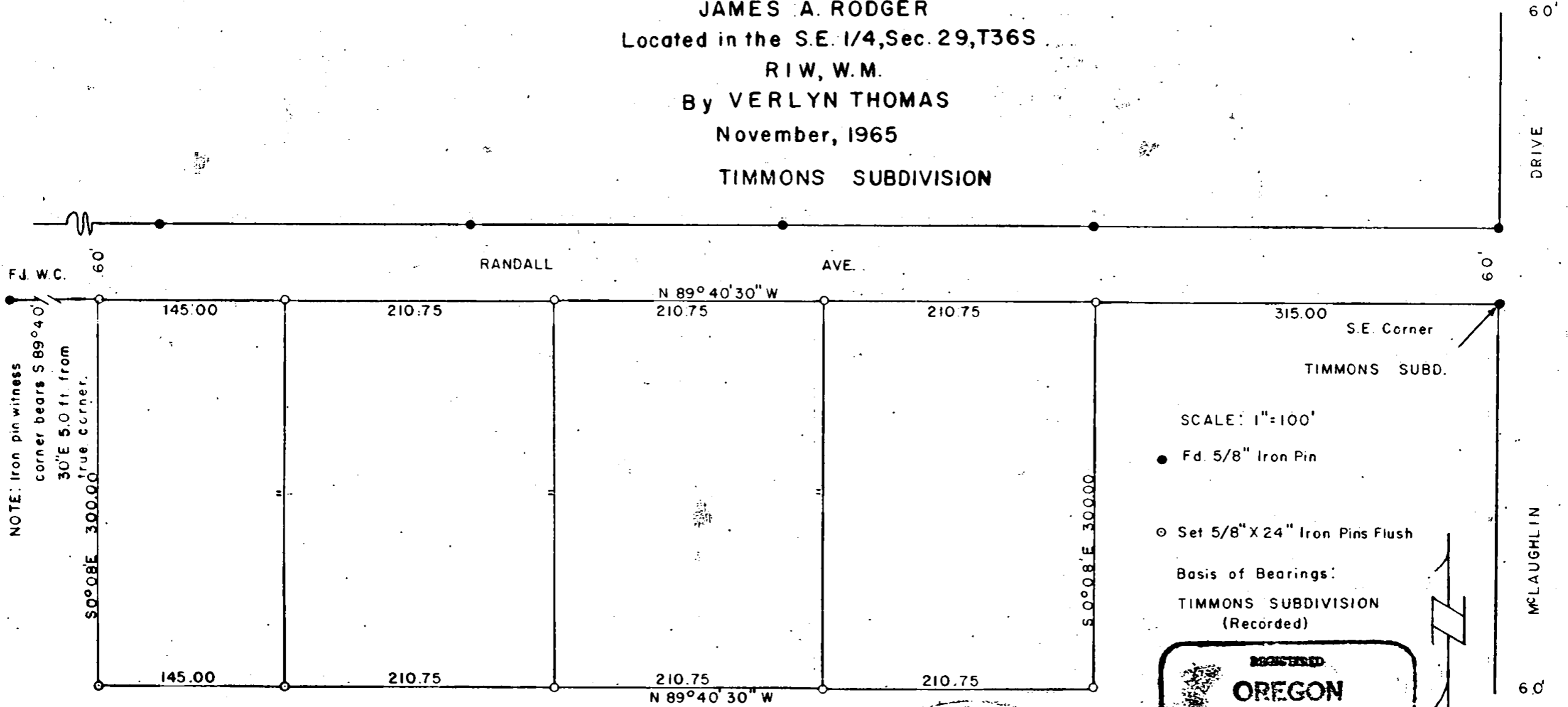


2950

Survey For
 JAMES A. RODGER
 Located in the S.E. 1/4, Sec. 29, T36S
 RIW, W.M.
 By VERLYN THOMAS
 November, 1965
 TIMMONS SUBDIVISION



RECEIVED
 JACKSON
 JAN - 5 1965
 COUNTY
 SURVEYOR

REGISTERED
 OREGON
 LAND SURVEYOR
Verlyn Thomas
 MAY 13, 1960
 VERLYN THOMAS
 307

60'

DRIVE

MCLAUGHLIN

60'

2950

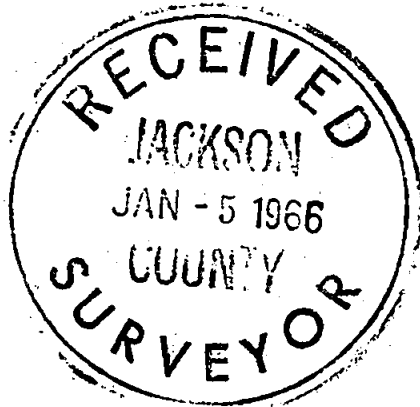
Survey No. 2950

SURVEY NARRATIVE TO COMPLY WITH O.R.S. 209.250
REVISED BY CHAPTER 555, O.L. 1963

FOR: James A. Rodger
211 Kings Way
Central Point, Oregon

PURPOSE: Survey and monument four residential parcels, as indicated on the Plat.

PROCEDURE: Bearings were determined from TIMMONS SUBDIVISION. The South line of Randall Avenue was determined from the $\frac{5}{8}$ " Iron pin monumenting the S.E. corner of Timmons Subdivision, and the $\frac{5}{8}$ " Iron pin 5.0 feet S 89°40'30" E of the true S.W. corner, said Timmons Subdivision. The parcels were then surveyed and monumented as indicated on the accompanying plat.



Verlyn Thomas
MAY 12 1966
VERLYN THOMAS
509