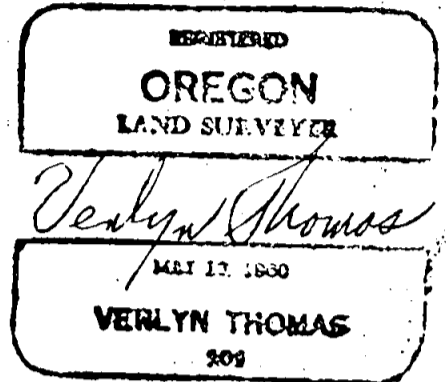
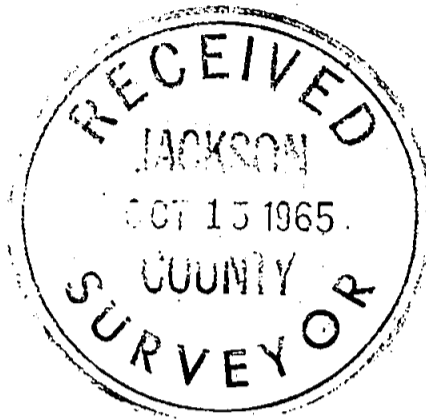


SURVEY FOR C.W. DUGGAN

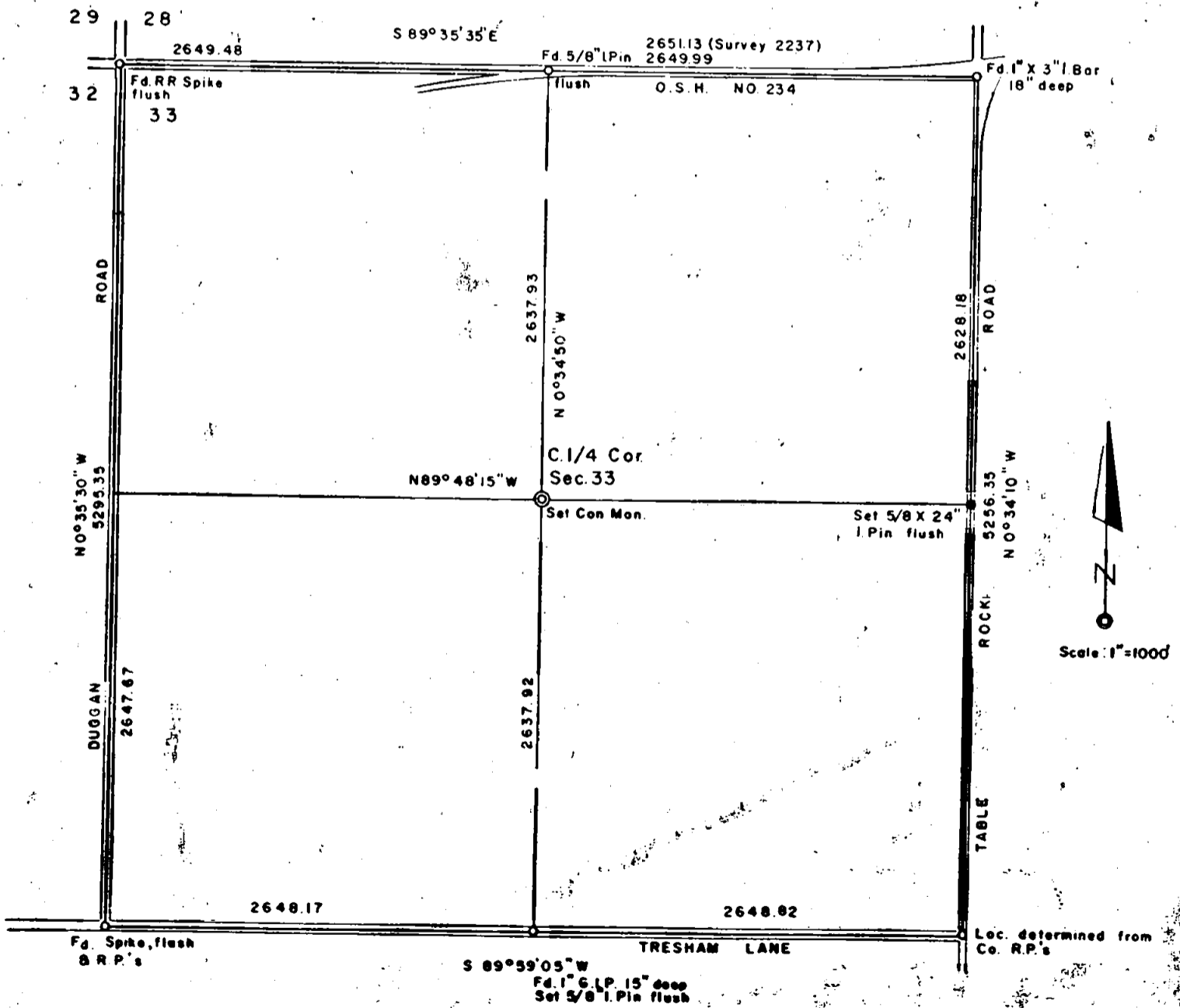
Sec. 33 T. 35S., R. 2W., W.M.

August, 1965

2915



Origin of Bearings: Land of Many Oak, Addition 2



2915

SURVEY NARRATIVE TO COMPLY WITH O.R.S. 209.250
 Revised by Chapter 555, O.L. 1963

For: C.W. Duggan
 3152 Tresham Lane
 Central Point, Oreg.

PURPOSE: To determine the Center One Quarter Corner of Section 33, T.35 S.,
 R.2 W., W.M.

PROCEDURE:

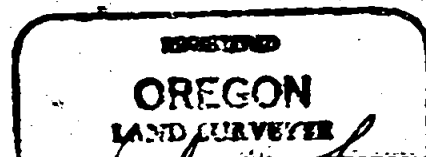
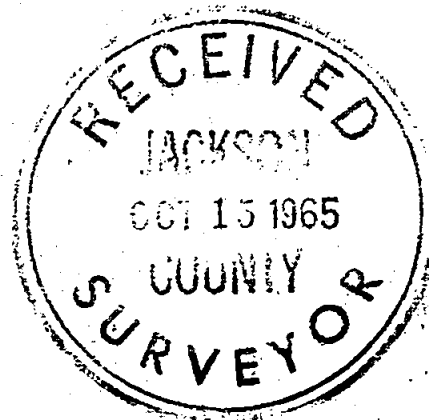
A traverse was run around the outside boundary of the Section, tying to the four section corners, the North $\frac{1}{4}$ Corner, and the South $\frac{1}{4}$ Corner, as shown on the accompanying plat. The location of the Southeast corner of said Section 33 was established from reference notes on file with the office of the County Engineer, recorded as follows; $\frac{3}{4}$ "X25" I. Pin N89°56' E 30.00 feet
 $\frac{1}{2}$ "X24" I. Pin N89°56' E 100.00 feet; Mark on Southerly edge 24" Conc. pipe, 241.1 feet; (pipe around spring)

The Center $\frac{1}{4}$ Corner monument was subsequently set by a traverse from the South $\frac{1}{4}$ Corner Section 33, after first checking the East-West alignment by establishing a 30 foot offset East from the North and South $\frac{1}{4}$ Corners. A $\frac{5}{8}$ "X24" Iron pin was set flush with the pavement for the East One Quarter Corner

See Section 33. R.P. Data as follows:

R.R. Spike, South side 17" W. Oak, bears S 85° E, 67.48 feet.
 R.R. Spike, East side 17" B. Oak, in West R/W fence, bears S 54° W, 37.24 feet. (Bearings taken with compass.)

August, 1965



Verlyn Thomas
 MAY 13, 1960
 VERLYN THOMAS
 209