

WILLIAMS SUBDIVISION UNIT I

LOCATED IN SECTION 4, T. 39 S., R. 1 E., W. M.
ASHLAND, JACKSON COUNTY, OREGON.

DEDICATION

KNOW ALL MEN BY THESE PRESENTS, That we C.C. Williams and Sadie Williams are the owners in fee simple of the lands hereon described and that we have subdivided the same into lots, blocks and streets as shown hereon and the number and size of the lots and lengths of all lines are plainly set forth, and that this plat is a correct representation of the said subdivision, and we do hereby dedicate to the public for public use all streets and easements shown hereon, and we do hereby designate said subdivision as WILLIAMS SUBDIVISION UNIT I.

IN WITNESS WHEREOF we have set our hands and seals hereunto this 13th day of SEPTEMBER 1965

C.C. Williams

Sadie Williams

STATE OF OREGON

County of Jackson

SEPTEMBER 13 A.D. 1965

Personally appeared the above named C.C. Williams and Sadie Williams and acknowledged the foregoing instrument to be their voluntary act and deed. Before me,

Lucia O'Brien
Notary Public for Oregon

My Commission expires NOVEMBER 4 1965

SURVEYOR'S CERTIFICATE

I, L.E. AGER a duly registered Surveyor of the State of Oregon, being first duly sworn, do hereby certify that I have correctly surveyed and marked with the proper monuments as provided by law, the tract of land hereon shown and the said plat is a correct representation of the same, and the following is an accurate description of the boundary lines:

Commencing at a point on the North line of Donation Land Claim No. 40, Township 39 South, Range 1 East, Willamette Meridian, Jackson County, Oregon, which point bears S. 89° 53' E. 1259.28 feet from the Northwest corner thereof; thence North along the East line of Cedar Homes Subdivision, 470.08 feet to the true point of beginning; thence North along said line 140.46 feet to the Northeast corner of said subdivision; thence S. 89° 53' E. 1082.20 feet to the West line of Helman Street; thence along said street, S. 0° 30' E. 118.00 feet; thence N. 89° 53' W. 873.23 feet; thence S. 84° 00' 40" W. 211.15 feet to the true point of beginning.

L. E. Ager
SURVEYOR

Subscribed and sworn to before me this 11th day of September 1965

Louise H. Myers
NOTARY PUBLIC FOR OREGON

My commission expires 9-16 1967

Examined and approved by the City of Ashland Planning Commission this 5 day of OCTOBER 1965

ATTEST: Hilda J. Finney
SECRETARY

Howard J. Jace
PRESIDENT

Examined and approved for the City of Ashland this 5th day of October 1965

Allen A. Alving
CITY ENGINEER

Examined and approved by the Talent Irrigation District in regular session this 5th day of October 1965

W. A. H. [Signature]
SECRETARY

Evan E. [Signature]
PRESIDENT

Examined and approved this 8th day of October 1965

Thad W. Hatten by Paul M. [Signature]
COUNTY ASSESSOR

All taxes paid in full to date this the 8th day of Oct. 1965

[Signature]
COUNTY SHERIFF

For order of the County Court approving this plat see Volume _____ page of County Commissioner's Journal of proceedings.

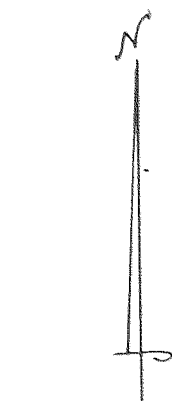
By _____
DEPUTY

Emm [Signature]
COUNTY CLERK

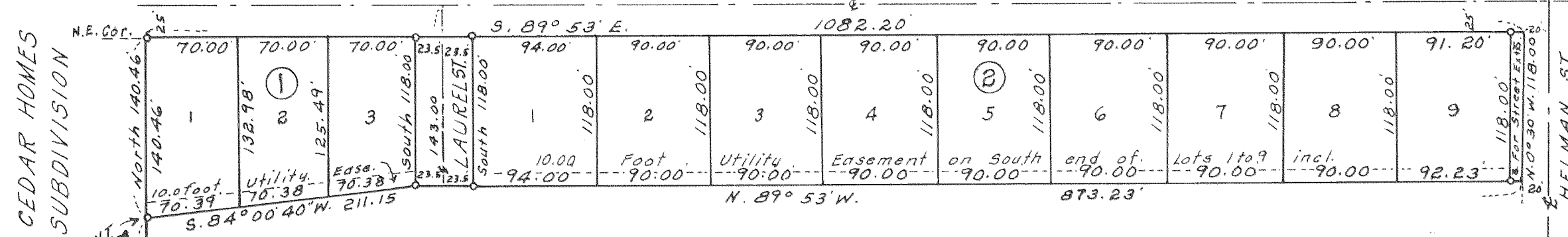
637153
Filed for record this the 13 day of October 1965 at 4:14 o'clock P.M. and recorded in Volume 10 of Plats at Page 19 of Records of Jackson County, Oregon.

By _____
DEPUTY

Emm [Signature]
COUNTY CLERK

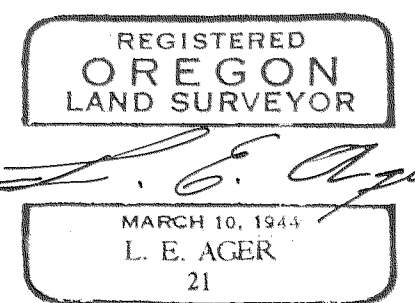


SCALE: 1" = 100'



N.W. COR. D.L.C. # 40
T. 39 S., R. 1 E., W. M.
1" IRON PIPE
S. 89° 53' E.
1259.28'

NOTE:
5/8" iron rods set flush-Block Corners
1/2" iron rods set flush-Lot Corners
Datum: Identical- CEDAR HOMES SUBDIVISION



Survey No. 2910

SURVEY NARRATIVE TO COMPLY WITH O.R.S. 209.250

FOR: C. C. WILLIAMS, 707 Helman Street, Ashland, Oregon.

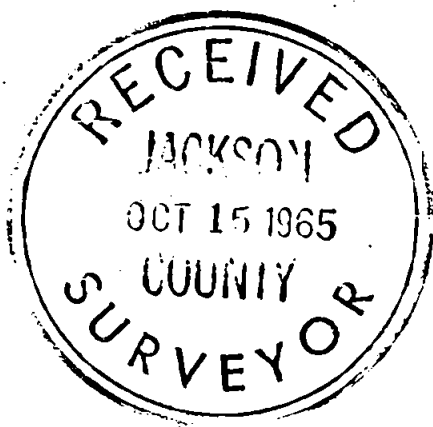
LOCATION ; Northwest Quarter of Section 4, Township 39 South,
Range 1 East, W.M., Jackson County, Oregon.

PURPOSE: To subdivide a tract of land into lots, blocks and
streets, designated as WILLIAMS SUBDIVISION UNIT No.1

PROCEDURE: This subdivision joins the East line of CEDAR HOMES
SUBDIVISION and joins the South line of Nevada Street
and extends Easterly to Helman Street.

From monuments along the East line of Cedar Homes
Subdivision for control, I surveyed the boundaries
of and subdivided the tract shown on map.

Bearing datum: Same as Cedar Homes Subdivision.



L. E. Ager

