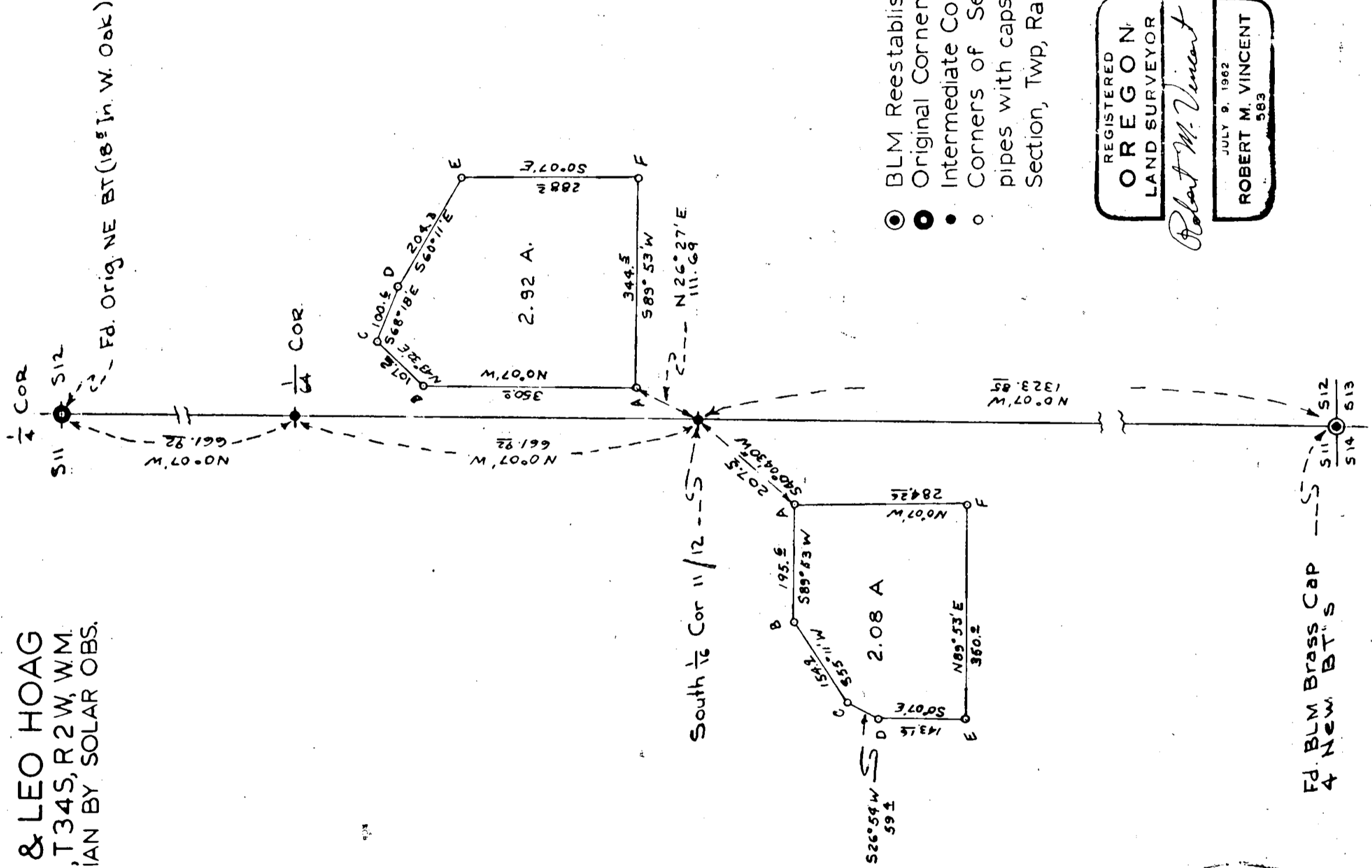
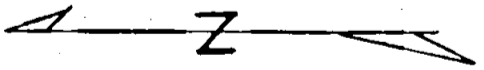


SURVEY FOR  
ELK LUMBER COMPANY & LEO HOAG  
SE 1/4 SEC 11 & SW 1/4 SEC 12, T34S, R2W, WM.  
SCALE - 1 in. = 200 Ft.  
MERIDIAN BY SOLAR OBS.



**CORNERS**

- BLM Reestablishment of Original Corner
- Original Corner Restored from Evidence
- Intermediate Corners Established by Proportion
- Corners of Segregated Tracts - (1 in by 36 in pipes with caps stamped "PROP COR" 1965 & Section, Twp, Range & Corner Position on this map)

REGISTERED  
OREGON  
LAND SURVEYOR

*Robert M. Vincent*

JULY 9, 1962  
ROBERT M. VINCENT  
583

August 24, 1965



Date 11/20/63 Sec. 11 Twp 34S, R 24W Obs. by P. H. Frankenberg  
 Instrument No. 179751 Inst. Corr.: Horiz. 0.00' Vert. max 0.1'  
 Compass Brg. of Ref. Line S 4° 30' E Mag. Decl. 0.2° E  
 Latitude 42° 37.7' Elevation 2350 Temperature 60°  
 Inst. at Sta. A12 Pointing at Sta. A9 Hor.  $\times$  turned clockwise

POINTING SUN

TIME

	Position	Horiz. $\times$	Vert. $\times$	Time
1	<u>NVC</u> <u>D.I.I</u> ↓	<u>25° 24'</u>	<u>22° 00'</u>	<u>9:57</u>
2	• +	<u>24° 32'</u>	<u>22° 20.5'</u>	<u>10:01</u>
3	• +	<u>23° 50'</u>	<u>22° 24'</u>	<u>10:07</u>

Std. Time 120 th Merid 10:00 AM  
 Corr for 24 Hr Basis + 0  
120 th Merid. Time 10:00  
 Corr for Time Zone + 0  
 Greenwich Civil Time 10:00

1 SUN'S ALTITUDE "h"  
 Measured Alt 22° 01.0  
 Refract. & Par.  $(2.3 \sqrt{.93} / 100) + 14 = -2.1$   
 True Altitude "h" = 21° 58.9

Sun's  $d^{\circ}$  on GCT 519° 28.2'  
 Change/Hr 57 x 18.0 Hrs = + 10.3  
 Sun's  $d^{\circ}$  at Time of Obs. 529° 38.5'

2 SUN'S ALTITUDE "h"  
 Measured Alt 22° 21.5  
 Refract. & Par.  $(2.32 \sqrt{.93} / 100) + 14 = -2.0$   
 True Altitude "h" = 22° 19.5

3 SUN'S ALTITUDE "h"  
 Measured Alt 22° 35.0  
 Refract. & Par.  $(2.35 \sqrt{.93} / 100) + 14 = -2.0$   
 True Altitude "h" = 22° 33.0

FORMULA

Z = Sun's Brg. (E of N in AM & W of N in PM). Minus val. of Cos Z indicates Z is greater than 90°  

$$\cos Z = \frac{\sin d}{\cos h \cos l} - \tan h \tan l$$

1  $\cos Z = \frac{-0.33624}{.92730 \times .73576} - .40366 \times .92046$   
 $= \frac{-0.33624}{.68227} - .37155$   
 $= -.49283 - .37155$   
 $\cos Z = -.86438$        $Z = 530^{\circ} 11' E$

30° 11'  
25° 24'  
S 4° 47' E  
 Ans. ↗

2  $\cos Z = \frac{-0.33624}{.92505 \times .73576} - .41064 \times .92046$   
 $= \frac{-0.33624}{.68061} - .37798$   
 $= -.49403 - .37798$   
 $= -.87201$        $Z = 529^{\circ} 18.5' E$

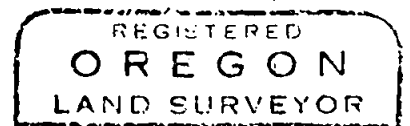
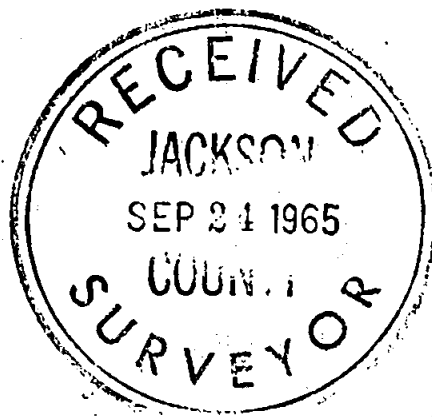
S 4° 47' E  
21 18.5  
24° 32'  
S 4° 46.5' E  
 Ans. ↘

3  $\cos Z = \frac{-0.33624}{.92355 \times .73576} - .41524 \times .92046$   
 $= \frac{-0.33624}{.67951} - .38221$   
 $= -.49483 - .38221$   
 $= -.87704$        $Z = 528^{\circ} 43' E$

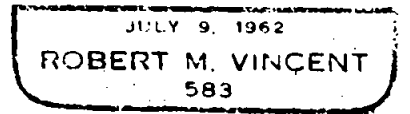
Not used No good  
28° 43'  
23° 50'  
S 4° 53' E  
 Ans. ↘

5. All corners of the segregated tracts were marked with one inch by 36 inch galvanized steel pipes with one and one half to one inch bell reducers filled with pot metal and stamped with the year, Township, Range, Section and letter corresponding to locations as designated on the map which is a part of this report.

Field work completed August 15, 1965.  
Meridian by Solar Observation, a copy of which is attached.



*Robert M Vincent*



1965  
T34S R2W W M  
S11 / S12  
1/4 COR  
RS 583

New BT's -

From the above described corner monument a 10 inch Sugar Pine bears North  $76^{\circ} 00'$  West 10.6 feet and a 17 inch Douglas fir bears North  $22^{\circ} 00'$  East 42.5 feet. Both trees are double blazed and scribed "RS 583" in the upper blaze and "BT" in the lower. Distances were measured to face of blaze and compass variation was set at  $20^{\circ} 00'$  East.

3. At the proportionate position for the South one sixteenth corner on the section line between Sections 11 and 12 set a one inch by 36 inch galvanized steel pipe driven 32 inches in the ground and capped with a one and one half inch to one inch galvanized bell reducer filled with pot metal and stamped as shown below in one eighth inch letters and numerals:

1965  
T34S R2W  
S11/ S12  
S 1/16 COR  
R. S. 583

BT's -

From the above described corner monument an 8.5 inch White Oak bears North  $28^{\circ} 00'$  East 29.15 feet and a 9.5 inch White Oak bears South  $55^{\circ} 00'$  East 44.25 feet. Both trees are double blazed and scribed "RS 583" in the upper blaze and "BT" in the lower. Distances were measured to face of blaze and compass variation was set at  $20^{\circ} 00'$  East.

4. At the proportionate position for the North South one sixty fourth corner on the section line common to Sections 11 and 12 set a one inch by 36 inch galvanized steel pipe driven 30 inches in the ground and capped with a one and one half inch to one inch galvanized bell reducer filled with pot metal and stamped as shown below in one eighth inch letters and numerals:

1965  
T34S R2W  
S11 / S12  
1/65 COR  
R S 583

BT's -

From the above described corner monument an 8 inch White Oak bears North  $45^{\circ} 00'$  East 54.9 feet and an 8 inch Ponderosa Pine bears South  $32^{\circ} 30'$  East 61.33 feet. Both trees are double blazed and scribed "RS 583" in the upper blaze and "BT" in the lower. Distances were measured to face of blaze and compass variation was set at  $20^{\circ} 00'$  East.

SURVEY NARRATIVE TO COMPLY WITH O. R. S. 209.250  
REVISED BY CHAPTER 555, O. L. 1963.

FOR: ELK LUMBER COMPANY  
P. O. BOX 606, MEDFORD, OREGON  
AND  
LEO HOAG  
900 SISKIYOU BLVD., MEDFORD, OREGON

PURPOSE -

1. To establish by proportionate measurement the south one sixteenth corner on the Section line between Sections 11 and 12, Township 34 South, Range 2 West, Willamette Meridian, and the North South one sixty fourth corner on the Section line common to the above mentioned Sections 11 and 12.
2. To locate, describe and monument the corners of two tracts of land, the boundaries of which having been previously determined. One of these tracts is located within the northwest quarter of the Southwest quarter of Section 12, Township 34 South, Range 2 West, and the other being located within the Southeast quarter of the Southeast quarter of Section 11 of the same township and range.

PROCEDURE -

1. Identified the section corner common to Sections 11, 12, 13 and 14, T. 34 S., R. 2 W., and remonumented the quarter section corner common to Sections 11 and 12 at the record bearing and distance from the identified original Northeast bearing tree thereof.
2. Established by proportionate measure the south one sixteenth corner on the section line between Sections 11 and 12 and the North South one sixty fourth corner on the section line between said Sections 11 and 12.
3. From the above mentioned one sixteenth corner, tied to the nearest corners of the tracts to be segregated and ran closed traverses around said tracts.
4. Monumented all corners of the tracts segregated.
5. All bearings and distances derived from transit and tape traverses.

CORNERS -

1. The section corner common to Sections 11, 12, 13 and 14, T. 34S., R. 2W is a BLM Cadastral Engineers' Reestablishment from original evidence and is monumented with the usual brass cap and has four new BT's as well as original evidence still visible.
2. At the one quarter corner common to Sections 11 and 12, we found the original Northeast BT which is now an 18.5 inch White Oak with BT scribe exposed. No trace of the original Southwest BT. At the record bearing and distance from the original Northeast BT set a one inch by 36 inch galvanized steel pipe driven 32 inches in the ground and capped with a one and one-half inch to one inch galvanized bell reducer filled with pot metal and stamped as shown below in one eighth inch letters and numerals: