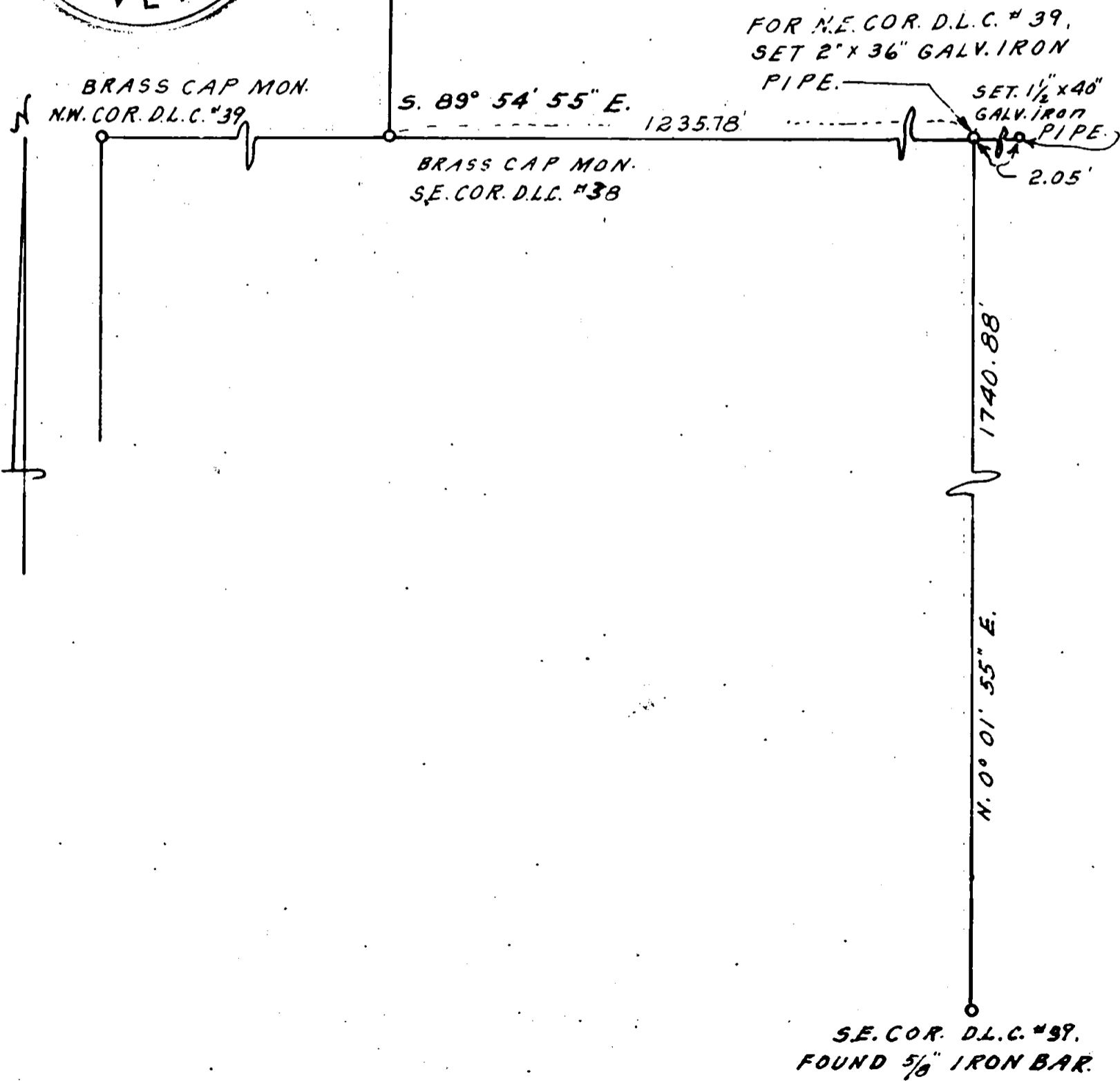
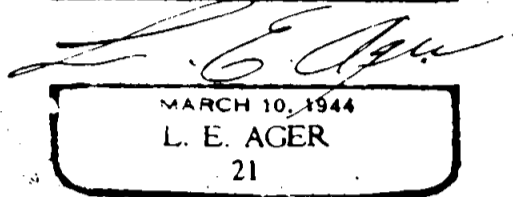
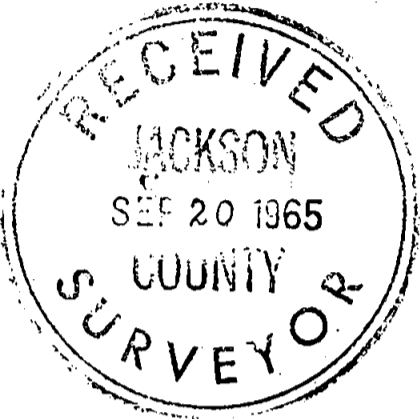


DETAIL MAP

Showing bearings and distances between the Northwest corner of D.L.C. # 39 and Southeast corner of D.L.C. # 38 and a 2" + 36" iron pipe set by me for the Northeast corner of D.L.C. # 39, also from the said pipe to the reestablished Southeast corner of Claim No. 39, all in Township 37 South, Range 1 West, W.M., Oregon.

Date: 7-26-65

Not drawn to scale.



FOR N.E. COR. D.L.C. # 39,  
SET 2" X 36" GALV. IRON  
PIPE.

SET 1 1/2" X 40"  
GALV. IRON  
PIPE.  
2.05'

S. 89° 54' 55" E.

1235.78'

BRASS CAP MON.  
S.E. COR. D.L.C. #38

BRASS CAP MON.  
N.W. COR. D.L.C. #39

1740.88'

N. 0° 01' 55" E.

SE. COR. D.L.C. #39.  
FOUND 5/8" IRON BAR.

SURVEY NARRATIVE TO COMPLY WITH ). O.R.S. 209.250

FOR: D. L. Pickell, 411 E. Main St., Medford, Oregon.

LOCATION: D.L.C. No. 39, and West Half of Section 18, all in Township 37 South, Range 1 West, W.M., Oregon.

PURPOSE: To subdivide a parcel of land designated as HAPPY HOMES SUBDIVISION and reestablish the Northeast corner of Donation Land Claim No. 39, T. 37 S., R. 1 W., W.M.

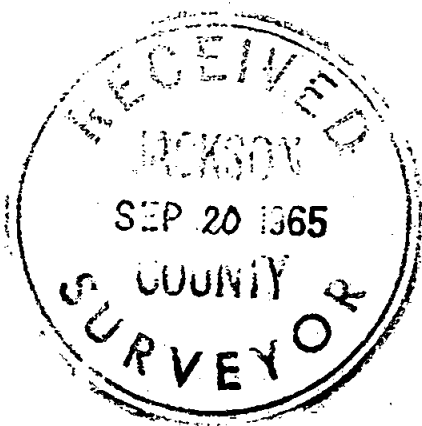
PROCEDURE:

To reestablish the Northeast corner of D.L.C. # 39, I found monuments at the Northwest corner of Claim No. 39 and the Southeast corner of Claim No. 38, using these corners for line control, I produced the line from the Northwest corner of D.L.C. # 39 thru the Southeast corner of Claim No. 38 to intersect the established center line of Corona Avenue, said produced line followed an old fence.

The boundaries of the subdivided tract had been previously established by L. P. Lovejoy and his map of survey indicated a 5/8" steel pin found at the Northwest corner of the tract at a point 620.66 feet Easterly of the S.E. corner of Claim No. 38, said pin falling approx. 0.80 feet North of my projected line. A corner fence post was on my projected line and opposite the above mentioned pin. Ignoring this pin I removed the fence post and set a 2" + 30" iron pipe on my projected line at a point 620.66 feet from the corner of Claim No. 38. From this established corner I set a 2" by 36" iron pipe for the N.E. corner of Claim No. 39 on the record distance of 615.12 feet easterly, this distance appearing on the Deed recorded in Volume 456 page 244, Deed Records of Jackson County, Oregon, West of the Northeast corner of Claim No. 39, to the Northwest corner of the property.

For control of the East line of the Subdivision I used the established center line of Corona Avenue from a conc. mon. at the center of Corona Avenue & Roberts Road to a conc. mon. at the intersection of the Center line of Corona Avenue with the Southeasterly right of way line of Creter Lake Highway. For control of the West, South and portion of the East lines I used the monuments found and shown on the map of the Lovejoy survey and portion of the Easterly line from monuments previously set by myself. These monuments shown as found on the Subdivision map. The subdivision laid out within these boundaries.

For bearing control I used Lambert bearing as established by the City of Medford for the center line of Corona Avenue less Theta. ( Lambert Bearing N. 1°40'10" East), Theta 1°36'40"). Adjusted bearing N. 0°03'30" East for Center line of Corona Avenue.



*L. E. Ager*

