

**CINDERELLA HOMES SUBDIVISION
UNIT NO. 1**
LOCATED IN DONATION LAND CLAIM 45 & SECTION 3, T. 36 S., R. 1 W., W. M.
JACKSON COUNTY, OREGON
DEDICATION

KNOW ALL MEN BY THESE PRESENTS, That we, R. W. Voris, and Mary Elizabeth Voris and Ron Pitts and Barbara J. Pitts, are the owners in fee simple of the lands hereon described, and that we have subdivided the same into lots, blocks and streets as shown hereon, and the number and size of the lots and lengths of all lines are plainly set forth, and that this plat is a correct representation of the said subdivision, and we do hereby dedicate to the public for public use all streets and utility easements shown hereon, and we do hereby designate said subdivision as:

CINDERELLA HOMES subdivision UNIT NO. 1

IN WITNESS WHEREOF, we have hereunto set our hands and seals this 24 day of April 1965.

R. W. Voris
R. W. VORIS

Mary Elizabeth Voris
MARY ELIZABETH VORIS

Ron Pitts
RON PITTS

Barbara J. Pitts
BARBARA J. PITTS

STATE OF OREGON

County of Jackson } SS

April 24 A.D. 1965

Personally appeared the above named R. W. Voris, Mary Elizabeth Voris, Ron Pitts and Barbara J. Pitts and acknowledged the foregoing instrument to be their voluntary act and deed.

Before me:

My Commission expires the 7th day of July 1967

I certify that, pursuant to authority granted to me by the Eagle Point Planning Commission in open meeting of 1965, this plat is hereby approved by the Eagle Point Planning Commission. Dated this 1 day of June 1965.

Attest: *Larry Regatta*
President

Oran C. Chortain
Secretary

Examined and approved by the Little Butte Irrigation Company District in regular session this 15th day of June 1965.

Attest: *B. L. Dornhoff*
President

Marion Nagel
Secretary

Examined and approved this 9th day of August 1965.

Ihad W. Hatlen
County Assessor

All taxes paid in full to date this the 9 day of Aug 1965.

Dr. Gordon L. Ligo
County Sheriff

Examined and recommended for approval by the County Court this the 30th day of August 1965.

Jack E. Boyden
County Surveyor

For Order of the County Court approving this plat see Volume _____ page _____ of County Commissioners' Journal of Proceedings.

By: _____ Deputy

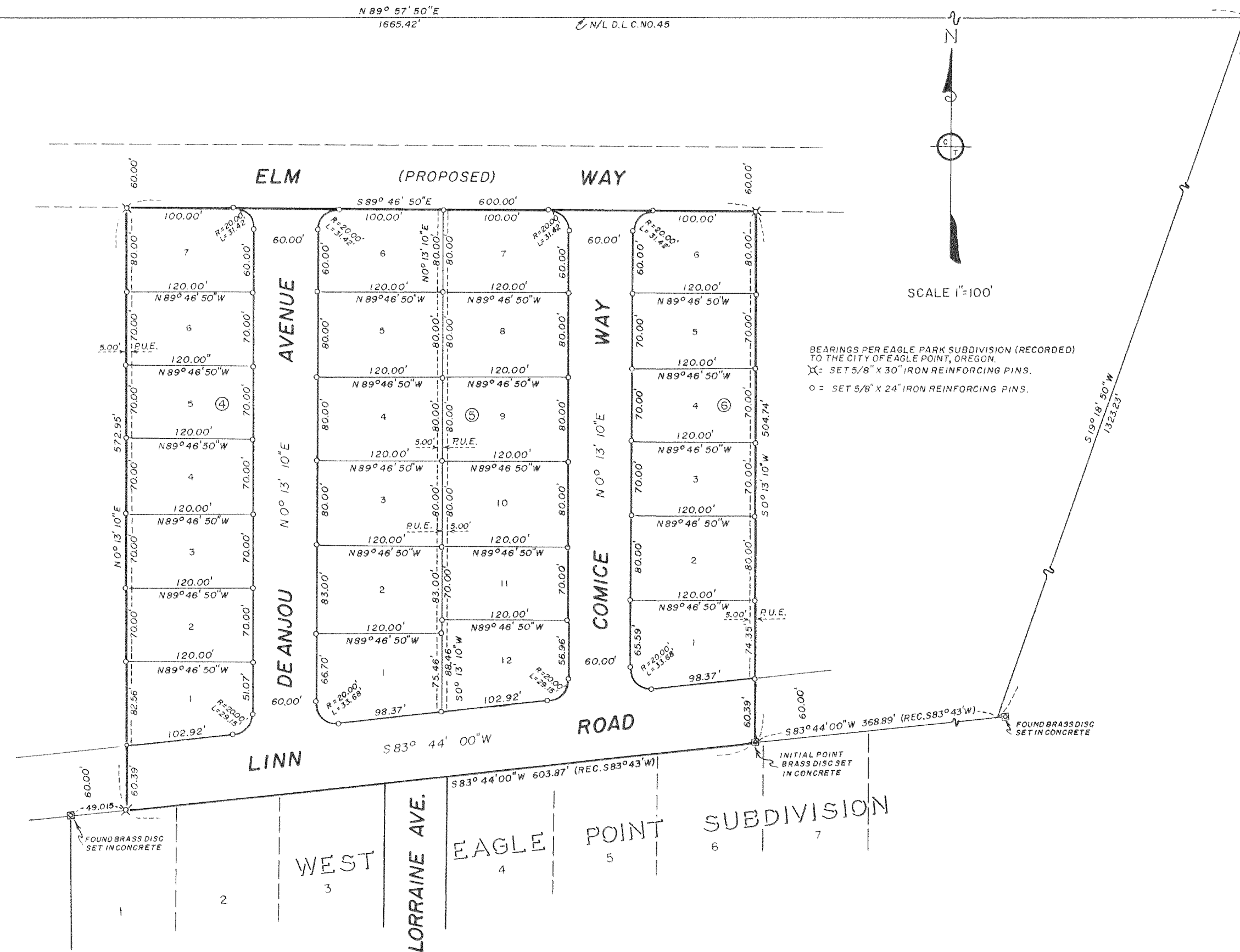
Emy Relel
County Clerk

633998
Filed for record this the 1 day of September 1965, at 10:17 O'Clock A.M. and recorded in Volume 10 of plats at page 17 of records of Jackson County, Oregon.

By: _____ Deputy

Emy Relel
County Clerk

NORTHWEST CORNER D.L.C. NO. 45, T. 36 S., R. 1 W., W. M.
(FOUND 3/4" IRON PIN)



SURVEYOR'S CERTIFICATE

STATE OF OREGON } SS
County of Jackson

J. A. Hoffbuhr, a duly registered Surveyor of the State of Oregon, being first duly sworn, do hereby certify that I have correctly surveyed and marked with the proper monuments as provided by law the tract of land hereon shown and the said plat is a correct representation of the same, and the following is an accurate description of the boundary lines:

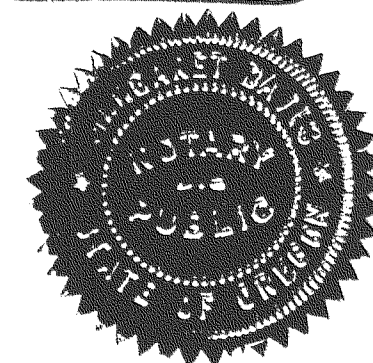
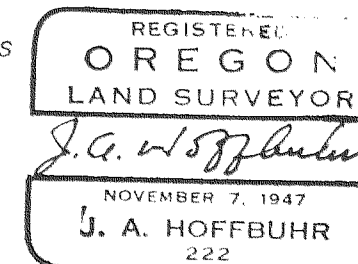
COMMENCING AT THE NORTHWEST CORNER OF DONATION LAND CLAIM NO. 45, IN SECTION 3, TOWNSHIP 36 SOUTH, RANGE 1 WEST OF THE WILLAMETTE MERIDIAN, JACKSON COUNTY OREGON; THENCE ALONG THE NORTH LINE OF SAID CLAIM, NORTH 89° 57' 50" EAST 1665.42 FEET; THENCE SOUTH 19° 18' 50" WEST 1323.23 FEET TO INTERSECT THE NORTH LINE OF WEST EAGLE POINT SUBDIVISION (RECORDED); THENCE ALONG THE NORTH LINE OF SAID AFOREMENTIONED SUBDIVISION, SOUTH 83° 44' 00" WEST (RECORD SOUTH 83° 43' WEST) 368.89 FEET TO THE INITIAL POINT, A BRASS DISC SET IN CONCRETE AND BEING THE TRUE POINT OF BEGINNING; THENCE CONTINUE SOUTH 83° 44' 00" WEST (RECORD SOUTH 83° 43' WEST) 603.87 FEET; THENCE NORTH 0° 13' 10" EAST 572.95 FEET; THENCE SOUTH 89° 46' 50" EAST 600.00 FEET; THENCE SOUTH 0° 13' 10" WEST 504.74 FEET TO THE INITIAL POINT.

J. A. Hoffbuhr
Surveyor

Subscribed and sworn to before me this 1st day of April 1965

Margaret Davis
Notary public for Oregon

My commission expires the 7th day of September 1968



Survey Narrative To Comply With Paragraph 209.250
Oregon Revised Statutes

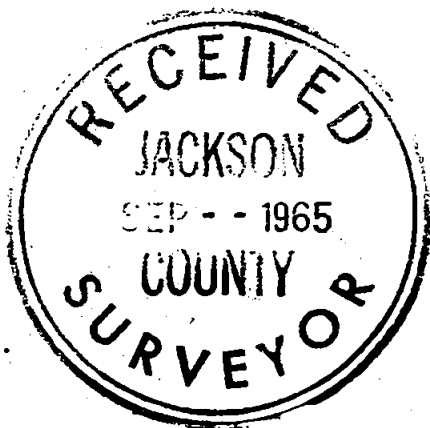
SURVEY FOR: R. W. Voris
Ron Pitts
1545 Highway 99
Ashland, Oregon.

LOCATION: Tract situated in Donation Land Claim No. 45 and
Section 3, Township 36 South Range 1 West,
Willamette Meridian in Jackson County, Oregon.

PURPOSE: Establish boundaries of Cinderella Homes Sub-
division Unit No. 1, and divide tract into Lots
and Blocks as the same appears on the recorded
plat.

PROCEDURE: The Northwest corner and Northeast corner of
Donation Land Claim No. 45 was located as described in the re-
established corner records of the County. The North Line of the
Donation Land Claim was established as indicated. The South Line
of Linn Road was established by the Northwest and Northeast
corner monuments of the West Eagle Point Subdivision as also
indicated. The boundaries of the subdivision were determined by
the clients and the tract was subdivided into Lots and Blocks as
they appear on the recorded plat of said subdivision. The corners
of the Lots and blocks were monumented as shown.

August 14, 1965



J. A. Hoffbuhr
Registered Land Surveyor



J. A. Hoffbuhr

