

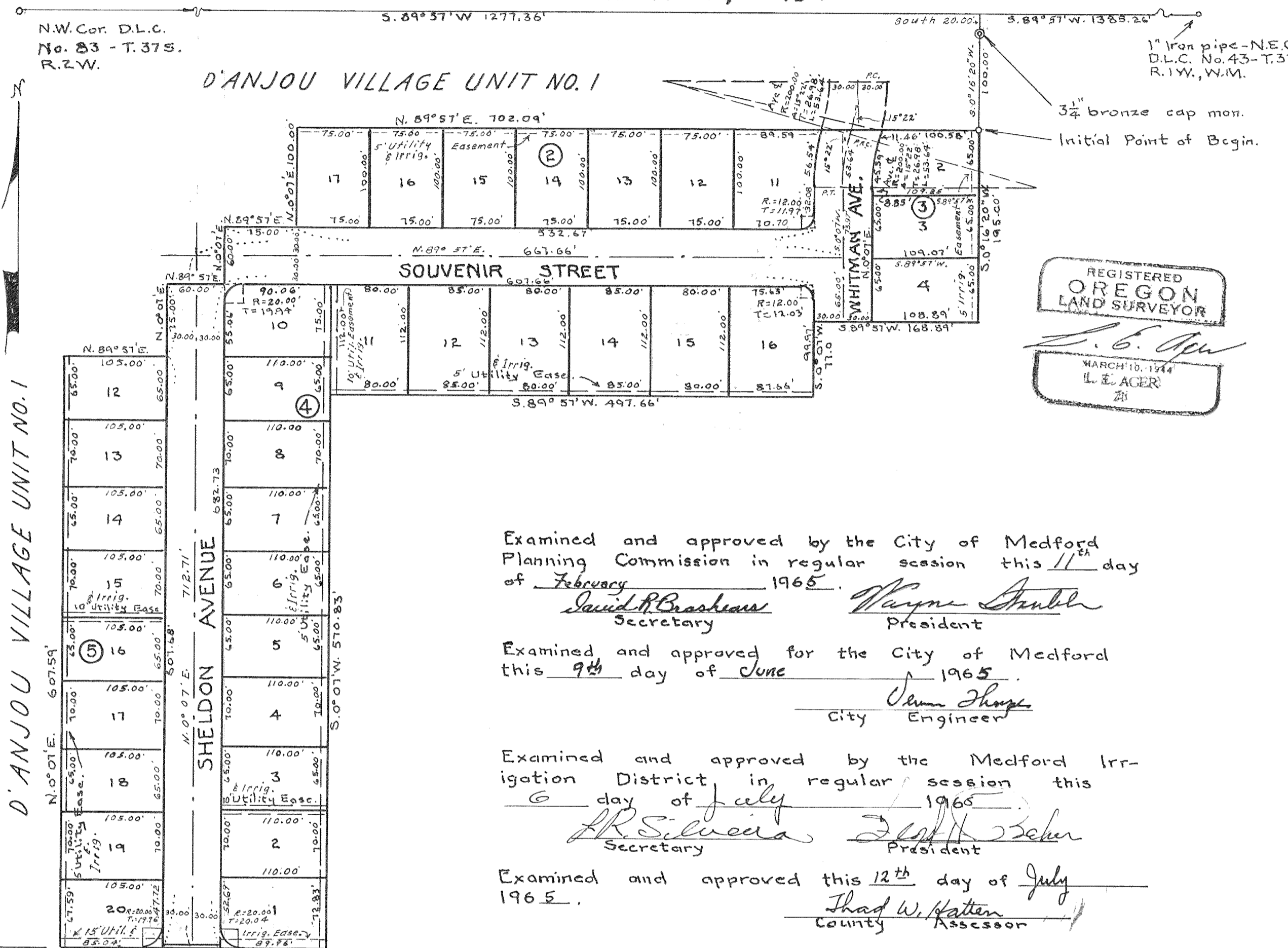
# D'ANJOU VILLAGE UNIT No. 2

IN D.L.C. No. 43, T.37S., R.1W., & D.L.C. No. 83, T.37S., R.2W., W.M.

CITY OF MEDFORD, JACKSON COUNTY, OREGON

DECEMBER 7, 1964

SCALE: 1" = 100'



## DEDICATION

KNOW ALL MEN BY THESE PRESENTS, that we, D. L. Pickell Real Estate, Inc., an Oregon corporation, are the owners in fee simple of the lands hereon described, and that we have subdivided the same into lots, blocks, avenues, and streets as shown hereon, and the number and size of the lots, blocks, and the length and size of the avenues and streets and the lengths of all lines are plainly set forth and the location and size of utility and other easements are shown, and that this plat is a correct representation of the said subdivision and we do hereby dedicate to the public for public use all avenues, streets, and easements shown hereon, and we do hereby designate said subdivision as: D'ANJOU VILLAGE UNIT No. 2; IN WITNESS WHEREOF we have set our hands and seals this 28<sup>th</sup> day of DECEMBER, 1964.

D. L. PICKELL REAL ESTATE, Inc.

Ruth A. Pickell Secretary  
Douglas L. Pickell President

Personally appeared before me, the above named Ruth A. Pickell, Secretary, and Douglas L. Pickell, President of D.L. Pickell Real Estate, Inc., and acknowledged the foregoing instruments to be their voluntary act and deed.

My commission expires the 3<sup>rd</sup> day of Mar, 1967.

## SURVEYOR'S CERTIFICATE

I, L.E. Ager, a duly registered Surveyor of the State of Oregon, being first duly sworn, do hereby certify that I have correctly surveyed and marked with proper monuments as provided by law the tract of land hereon shown and the said plat is a correct representation of the same, and the following is an accurate description of the boundary lines. Beginning at a 3 inch iron pipe with a 3/4 inch bronze cap marking the Northeast corner of D'Anjou Village Unit No. 1, which bears S.89°57'W. 1385.26 feet and South 20.0 feet from the Northeast corner of Donation Land Claim No. 43, T.37S., R.1W., W.M., Jackson County, Oregon; thence S.0°16'20"W. 100.0 feet to the initial point of beginning; thence S.0°16'20"W. 195.0 feet; thence S.89°57'W. 168.89 feet; thence S.0°07'W. 77.0 feet; thence S.89°57'W. 497.66 feet; thence S.0°07'W. 570.83 feet; thence West 275.0 feet; thence N.0°07'E. 607.59 feet; thence N.89°57'E. 105.0 feet; thence N.0°07'E. 75.0 feet; thence N.89°57'E. 60.0 feet; thence N.0°07'E. 60.0 feet; thence N.89°57'E. 75.0 feet; thence N.0°07'E. 100.0 feet; thence N.89°57'E. 702.09 feet to the initial point of beginning. Excepting therefrom a strip of land 1.0 feet in depth and 60.0 feet in length off the South end of Sheldon Avenue, conveyed to the City of Medford.

Subscribed and sworn before me this 7<sup>th</sup> day of December, 1964.

My commission expires the 16<sup>th</sup> day of September, 1967.

I hereby certify that this tracing is an exact copy of the original plat filed with the County Clerk.

L. E. Ager  
Surveyor

Examined and approved by the City of Medford Planning Commission in regular session this 11<sup>th</sup> day of February, 1965.

David R. Brashear Secretary  
Wayne Stahl President

Examined and approved for the City of Medford this 9<sup>th</sup> day of June, 1965.

John Sharp  
City Engineer

Examined and approved by the Medford Irrigation District in regular session this 6<sup>th</sup> day of July, 1965.

R. R. Silveira Secretary  
John Scher President

Examined and approved this 12<sup>th</sup> day of July, 1965.

Thad W. Hatten  
County Assessor

All taxes paid in full to date this 12<sup>th</sup> day of July, 1964.

Robert J. Fisher  
Sheriff

For order of the County Court approving this plat see Volume \_\_\_\_\_ page \_\_\_\_\_ of County Commissioner's Journal of Proceedings.

Emmy J. J. J.  
Deputy County Clerk

Filed for record this 3<sup>rd</sup> day of August, 1965 at 3:23 o'clock P.M. and recorded in Volume 10 of Plats at page 11 of Records of Jackson County.

Emmy J. J. J.  
Deputy County Clerk

## LEGEND

- R = Curve Radius
- T = Curve Semi-tangent
- PC = Point of Curve
- P.R.C. = Point of Reverse Curve
- PT = Point of Tangent
- L = Curve Length
- Δ = Curve Central Angle

M.I.D. ditch, point of delivery West 310'  
1.00' Except. Street Plug

Bearings from record established bearing of D.L.C. line between N.W. corner D.L.C. No. 83 & N.E. corner D.L.C. No. 43 - Rec. S.89°57'W. 1" iron pipe - N.E. cor. D.L.C. No. 43 Stone with + N.W. cor. D.L.C. No. 83 3/4" bronze cap - N.E. cor. D'ANJOU V. No. 1 1/2" iron pipe - Initial Point 1/2" to 3/4" iron bars - Block Corners 3/8" iron pipes - Lot Corners

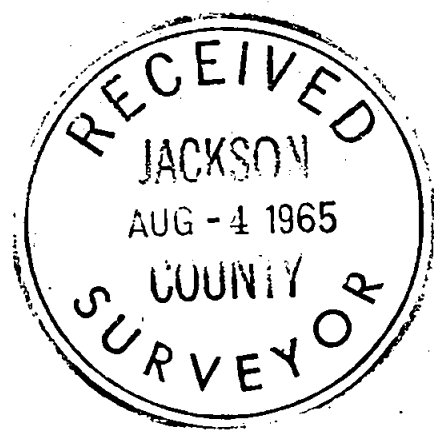
**SURVEY NARRATIVE TO COMPLY WITH O.R.S. 209.250**

**FOR: D. L. Pickell, 411 East Main Street, Medford, Oregon.**

**PURPOSE: To monument the corners of and describe the boundaries of parcel of land designated as D'ANJOU VILLAGE UNIT NO. 2 and subdivide same into lots, blocks and streets.**

**PROCEEDURE; As this subdivision joins the D'ANJOU VILLAGE Unit No. 1 and is a continuation thereof I established the boundaries of Unit No. 2 and subdivided same according to the submitted map.**

**Bearing basis identical with Unit No. 1**



*L. E. Ager*

