

2836

N 67° 16' 18" W (N 67° 16' W REC)

CALIFORNIA ST.

3/4" PIPE (FD)

1" I. PIN (FD)
5TH & CALIF. STS.

3/4" PIPE (FD)
N.E. COR. LOT 2

LOT 1

LOT 2

LOT 3

LOT 4

BLOCK 6

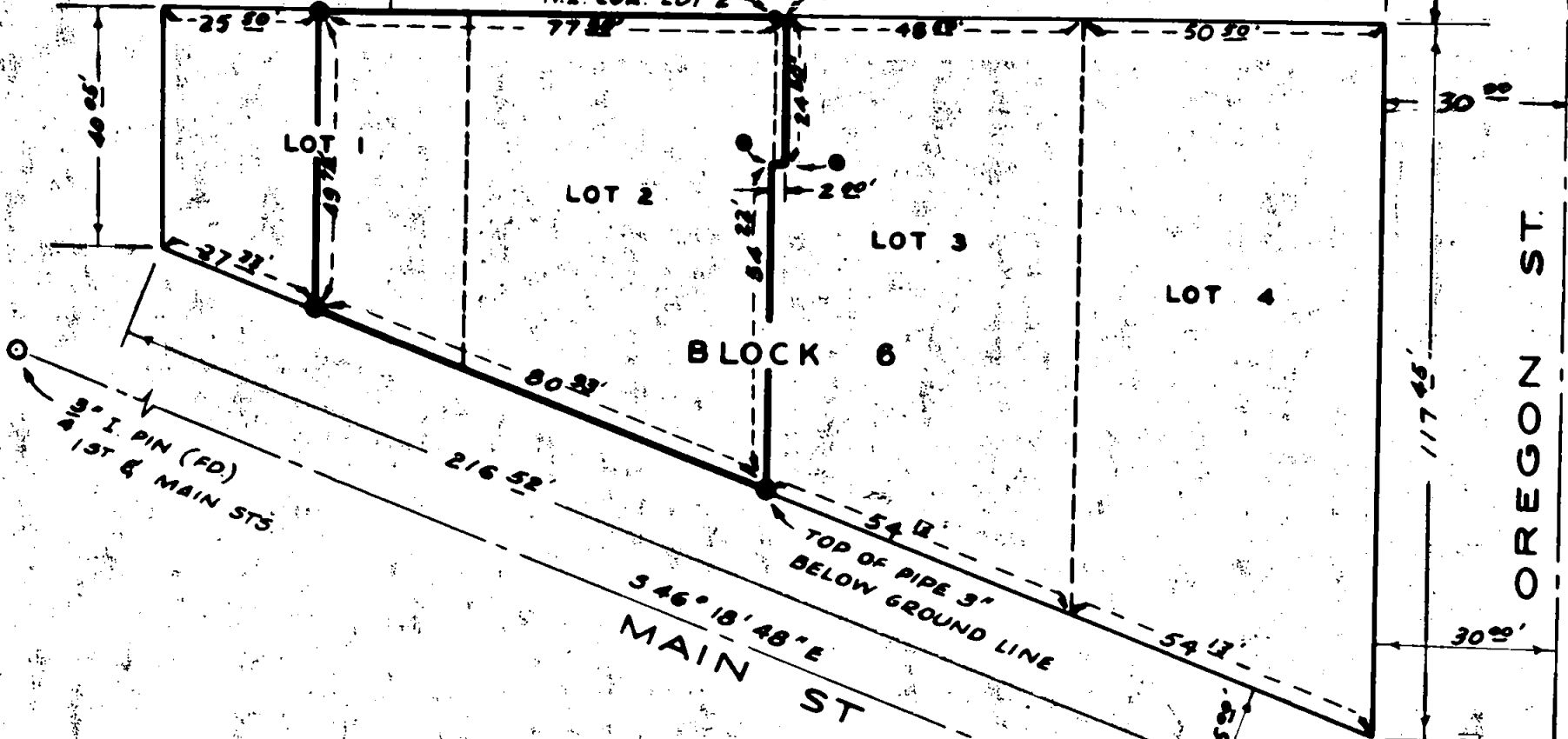
OREGON ST.

REGISTERED
OREGON
LAND SURVEYOR

Ray W. Bergmann

MAY 7, 1954
RAY W. BERGMANN
316

RECEIVED
JACKSON
AUG - 3, 1965
COUNTY
SURVEYOR



- INDICATES 1 1/4" IRON PIPE SET FLUSH WITH GROUND
- INDICATES 1" IRON PIPE SET FLUSH WITH GROUND

SURVEY IN CITY OF JACKSONVILLE
FOR PACIFIC POWER & LIGHT COMPANY

DRAWN BY C.E.D. TRACED BY D.J.T. SCALE: 1" = 30' DATE 6-16-65

2836

SURVEY NARRATIVE TO COMPLY WITH O.R.S. 209.250

FOR: Pacific Power & Light Co.
216 W. Main St.
Medford, Oregon

LOCATION: Within the City of Jacksonville also being in Sec. 32
Twp. 37S. Range 2 W. W.M.

PURPOSE: To locate and monument a parcel, lying within Block 6,
being all of Lot 2, and a portion of Lots 1 and 3.

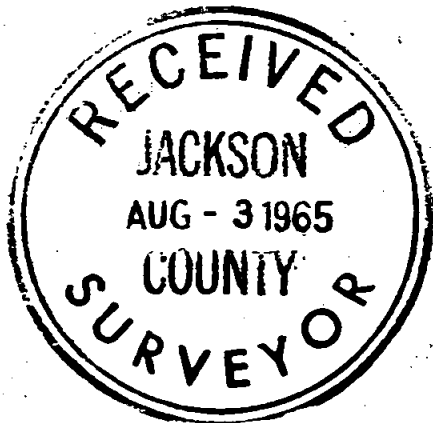
BASIS OF BEARING:

Survey No. 1339

PROCEDURE:

The centerline of California Street was re-established by extending a line from a monument at California Street and 5th Street, through a monument at California Street and Oregon Street. The centerline of Oregon Street was re-established by running a line between the monument at California Street and Oregon Street and a monument at Oregon Street and Main Street. The centerline of Main Street was established by running a line between a monument at Main Street and 1st Street and a monument at Oregon Street and Main Street. I was told by the Mayor of Jacksonville in a conversation on June 10, 1965 that these are accepted monuments. The North, East, and South boundary lines of Block 6 were re-established paralleling the centerlines of the aforementioned streets.

A loop survey was run around a portion of Block 6 to include the parcel to be monumented. This loop had a bearing closure error of $0^{\circ} 0' 38''$, and a distance error of $1/60,000$. From this loop, using platted information and the deed description, the property corners were established. A $3/4''$ pipe was found at the N.E. corner of Lot 2.



Ray W. Bergmann

