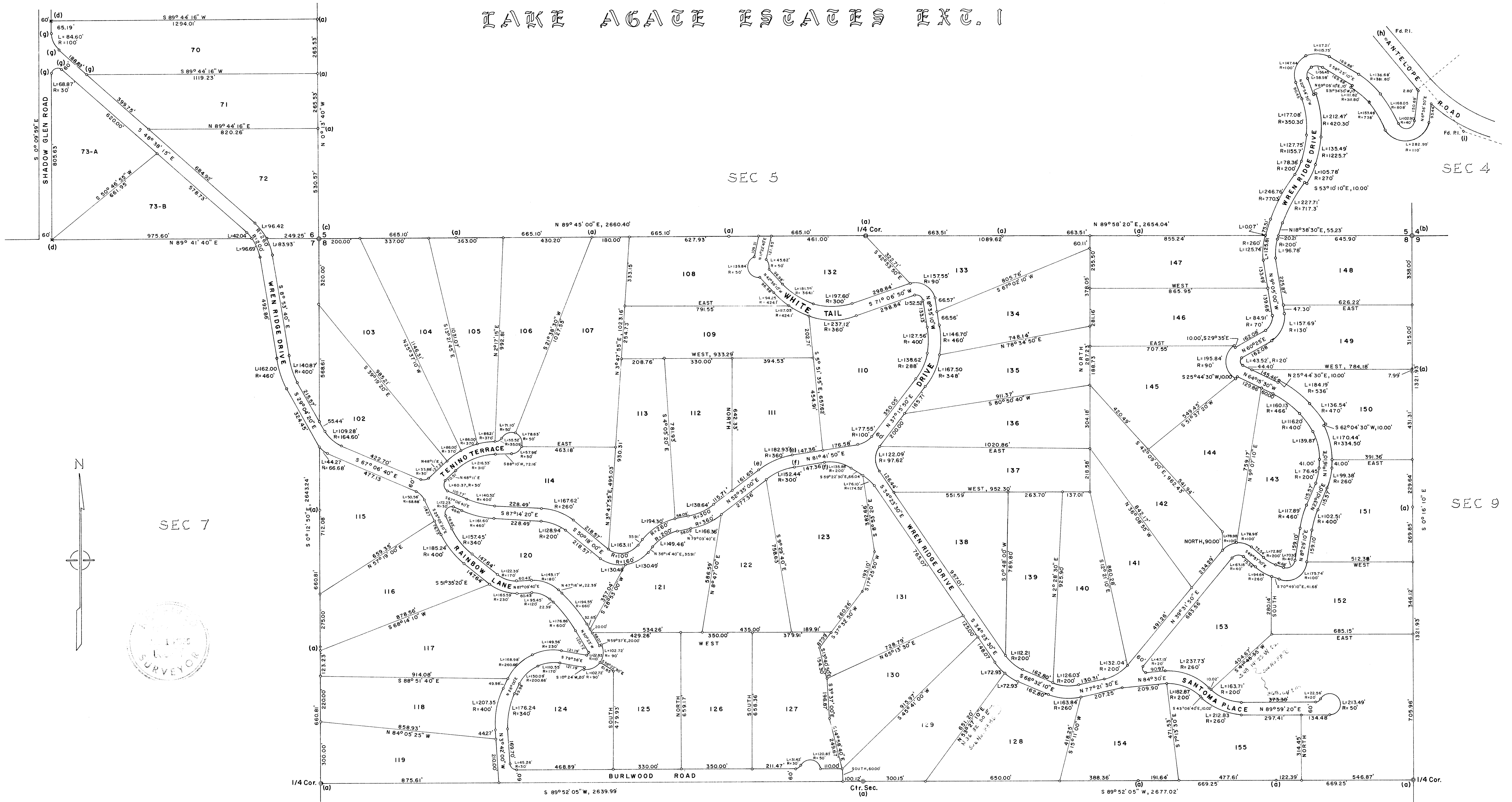


TANK AGATE ESTATES EXT. I



**SURVEY IN SEC. 4, 5, 6, 7, 8, & 9, T. 37 S., R. 1 E., W.M.
FOR
FAYDREX INC.**

BY EDWARD MCGINTY
MEDFORD OREGON
AUGUST 1964
70 JAN 1965



SCALE 1" = 200'
o = 5/8" Iron Pin
x = 1/2" Iron Pin
© - Cor. Fd.

Survey No. 2760

Survey Narrative to comply with O.R.S. 209-250:

Survey for: Faydrex, Inc.
1054 S. Riverside

Survey by: Edward A. McGinty, L.S.
1/25/65

BASIS OF BEARING: Previous survey of record No. 1962.

PRECEDENCE OF SURVEY:

Monuments:

- A. Found a 5/8 in. iron pin approx. flush with the surface.
- B. Found a 2 in. iron pipe set approx. flush with the surface.
- C. Found a 1 1/2 in. Brass cap set flush in bed-rock
- D. Found a 1/2 in. iron pin
- E. Set a 5/8 in. iron pin, 20 ins. long, 6 ins. above the surface
- F. Set a 5/8 in. iron pin, 20 ins. long, 9 ins. above the surface
- G. Set a 5/8 in. iron pin, 20 ins. long, 16 ins. above the surface
- H. Found a wood hub, 3 ins. deep and replaced it with a R.R. spike 3 ins. deep
- I. Found a wood hub, flush with the surface, and replaced it with a railroad spike, flush with the surface

All other monuments set, being 5/8 in. iron pins, 20 ins. long and set flush with the surface.

In retracement of survey No. 1962, found some of the distances to be shorter than previous measurements.

