

CEDAR HOMES SUBDIVISION

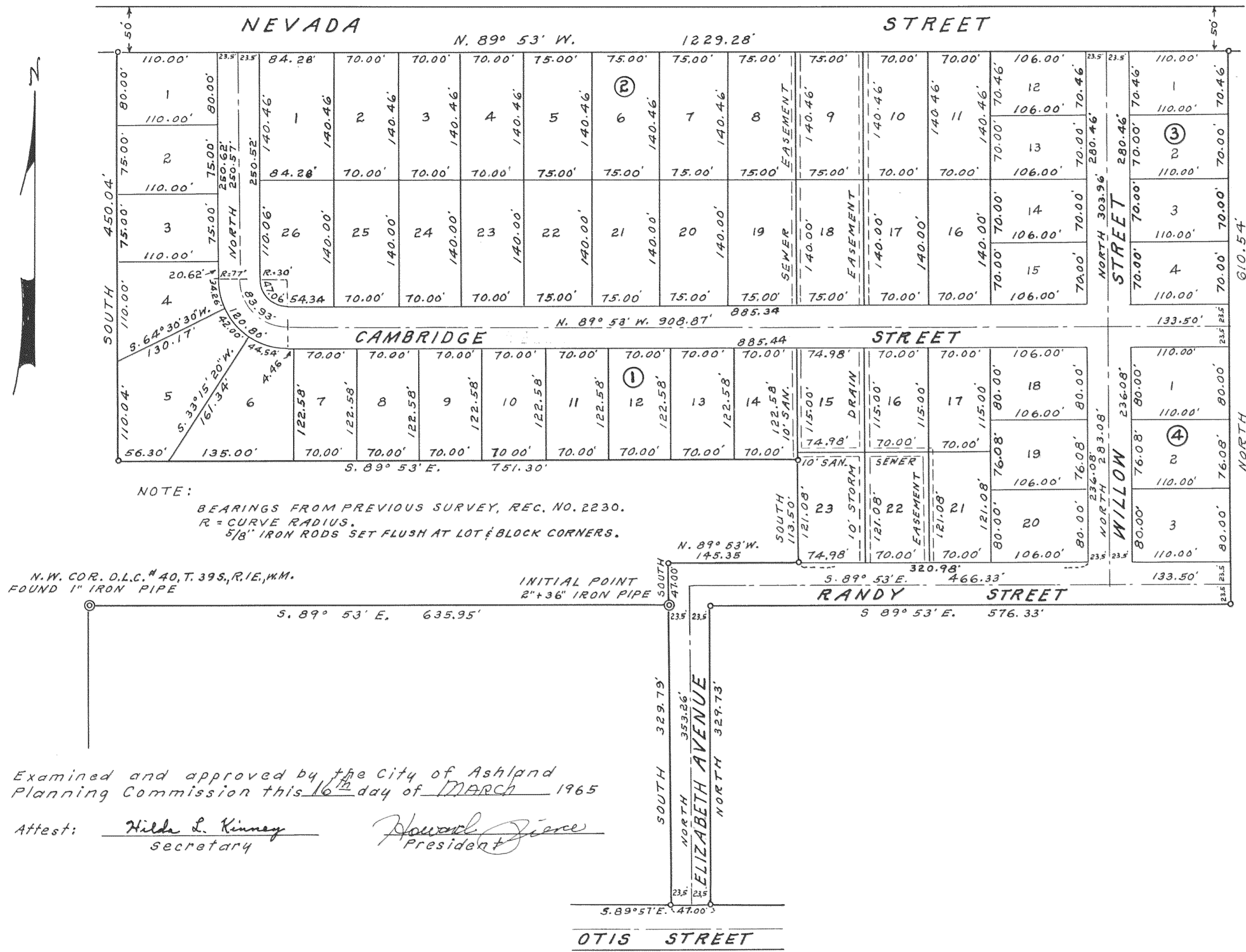
IN SECTION 4, T. 39 S., R. 1 E., W. M.

DATE: MARCH, 1965

ASHLAND, OREGON.

SCALE: 1" = 100'

DEDICATION



KNOW ALL MEN BY THESE PRESENTS, that we, Ron Pitts, Barbara J. Pitts, R.W. Voris, Mary Elizabeth Voris, B.H. Christlieb and Hazelle W. Christlieb are the owners in fee simple of the lands hereon described, and that we have subdivided the same into lots, blocks, avenues and streets as shown hereon, and the number and the size of the lots, blocks and the length and size of the avenues, streets and the length of all lines are plainly set forth and the location and size of all easements are plainly shown, and that this plat is a correct representation of the said subdivision and we do hereby dedicate to the public for public use all avenues, streets and easements shown hereon and we do hereby designate said subdivision as: CEDAR HOMES SUBDIVISION.

IN WITNESS WHEREOF, we have set our hands and seals this 6th day of March, 1965

Ron Pitts
Barbara J. Pitts
B.H. Christlieb

Hazelle W. Christlieb
R.W. Voris
Mary Elizabeth Voris
 whose true name is
Mary Elizabeth Voris

STATE OF OREGON } ss
 County of Jackson }

March 6 AD, 1965

Personally appeared the above named, Ron Pitts, Barbara J. Pitts, R. W. Voris, Mary Elizabeth Voris, B. H. Christlieb and Hazelle W. Christlieb and acknowledged the foregoing instrument to be their voluntary act and deed. Before me.

Margie C. Noehner
 Notary Public for Oregon

My Commission expires the 13th day of April, 1966

SURVEYOR'S CERTIFICATE

STATE OF OREGON } ss
 County of Jackson }

I, L.E. Ager a duly registered Surveyor of the State of Oregon, being first duly sworn, do hereby certify that I have correctly surveyed and marked with the proper monuments as provided by law, the tract of land hereon shown and the said plat is a correct representation of the same, and the following is an accurate description of the boundary lines: Beginning at a two inch iron pipe on the North line of Donation Land Claim No. 40, Township 39 South, Range 1 East, W.M., Oregon, said pipe bears S. 89° 53' E. 635.95 feet from the Northwest corner of said Claim; thence South 329.79 feet to the North line of Otis Street in the City of Ashland Oregon; thence S. 89° 57' E., along said street, 47.00 feet; thence North 329.73 feet to the North line of said Claim; thence S. 89° 53' E., along said line, 576.33 feet to a point which bears S. 89° 53' E. 1259.28 feet from the Northwest corner of said Claim; thence North 610.54 feet to the South line of Nevada Street; thence along said Street, N. 89° 53' W. 1229.28 feet; thence South 450.04 feet; thence S. 89° 53' E. 751.30 feet; thence South 113.50 feet; thence N. 89° 53' W. 145.35 feet; thence South 47.00 feet to the point of beginning.

L.E. Ager
 Surveyor

Subscribed and sworn to before me this 5th day of March, 1965

Margie C. Noehner
 Notary Public for Oregon

My Commission expires the 13th day of April, 1966

I hereby certify that this tracing is an exact copy of the original plat filed with the County Clerk.

L.E. Ager
 Surveyor

Examined and approved by the City of Ashland Planning Commission this 16th day of March, 1965

Attest: *Hilda L. Kinney* Secretary
Howard Pierce President

Examined and approved for the City of Ashland this 16th day of March, 1965

Allen A. Rising
 City Engineer

Examined and approved this 24th day of March, 1965

By *Ishad W. Hatten* Deputy
 County Assessor

All taxes paid in full to date this 24th day of March, 1965

Cliff Hammond
 County Sheriff

For Order of the County Court approving this plat see Volume _____ page _____ of County Commissioner's Journal of Proceedings.

By *Emy Adell* Deputy
 County Clerk

Filed for record this the 25th day of March, 1965 at 1:39 o'clock P.M. and recorded in Volume 9 of Plats of Jackson County at page 60 of Records of Jackson County.

By *Emy Adell* Deputy
 County Clerk

FOR: Ron Pitts, R. W. Voris, 954 Siskiyou Boulevard,
Talent, Oregon. Ashland, Oregon.

LOCATION: N.W. Quarter of Section 4 and D.L.C. # 40, T.39 S.,
R. 1 E., W.M., Jackson County, Oregon.

PURPOSE; To subdivide a parcel of land designated as CEDAR HOMES
SUBDIVISION.

PROCEDURE: For bearings I used same datum as recorded survey No. 2230. Two inch iron pipe at N.E. corner D.L.C. No. 40. One inch iron pipe at N.W. corner D.L.C. No. 40. At a point 305.49 feet Easterly from the pipe at the N.W. corner of Claim No. 40 I found a 3/4 in ch iron pipe set by McCall at the intersection of the D.L.C. line with the West line of proposed street leading to Otis Street. McCall record distance 305.60.feet. This found in City Records. This pipe bent at top, my distance from where straight portion enters ground. I used this pipe for line control East* West which checked the 1" iron pipe at the N.W. corner of Claim No. 40 for line. To check said corner pipe for West position I projected a line thru monuments set by McCall along the West D.L.C. line. Found Stone with lead center on center line of Church Street. 1-1/4" square bar center of Almond St. Stone with + center of Bush Street, 1-1/4" square bar Center of Wimer Street, and 1-1/4" iron bar on center of Nursery Street. As a direct line between these monuments is obstructed with buildings, trees & etc. I ran a traverse from the stone mon. on center of Church Street to the 1" iron pipe at the Northwest corner of Claim No. 40, tying in other monuments as described. For a line cneck against the traverse I flagged the Church Street Mon. and the D.L.C. corner and from the hill North of Town I could see both flags and wiggle in on line. McCalls Monuments do not line exactly and I get a lesser distance between monuments than his record. I moved the 1" iron pipe found for the N.W. corner of D.L.C. No. 40, 0.11' West to be in line with Monuments set by McCall. From the Hill North of Town I could see flags set at Mon. in Church Street and Wimer Street and set on this projected line to correct D.L.C. corner. I set a 5/8" rebar on true line and on the Northeasterly line of North Main Street and hub and tack on line South of railroad for pending survey of property along North Main Street. From adjusted corner indicated and the true D.L.C. line I subdivided the property shown within the boundary of the Deed Description. Also from the initial point shown for the subdivision I ran a traverse to Otis Street center line as projected thru monuments at center of Laurel & Otis and Otis & Willow and along Willow Street to the initial point of the Drager Subdivision and find the said point bears 973.49 feet South and 924.89 feet East of the Northwest corner of Claim No. 40.

