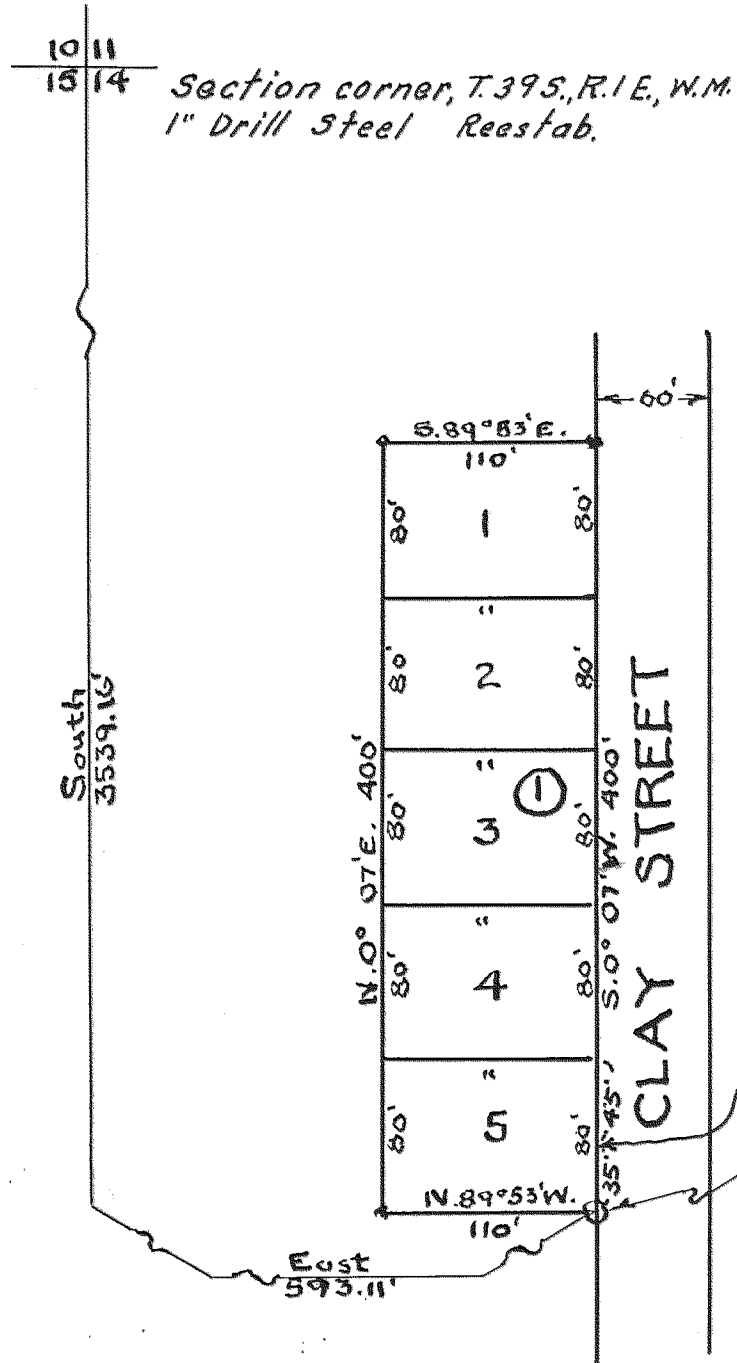


THE HAINES SUBDIVISION

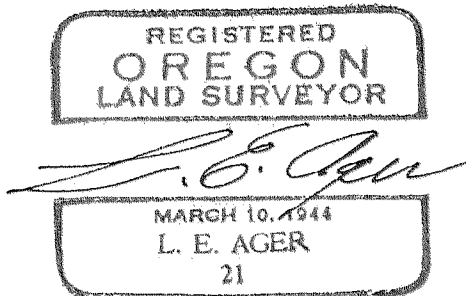
IN THE CITY OF ASHLAND, JACKSON COUNTY, OREGON
SECTION 14, T.39 S. R. 1 E. W.M.

SCALE 1"=100'



Note: 2" Galv. Iron Pipe set at initial point.
 1" Iron Pipes set at block corners.
 3/4" Iron Pipes set at lot corners.
 Bearings by Solar observation.

Point of entry, Talent Irrigation District ditch.
 POINT OF BEGINNING WHICH IS THE EASTERLY N.E. CORNER OF THE GUETZLAFF SUBDIVISION



I hereby certify that this tracing is an exact copy of the original plat filed with the County Clerk.

L. E. Ager
Surveyor

DEDICATION

KNOW ALL MEN BY THESE PRESENTS that I, Mildred L. Haines am the owner in fee simple of the lands hereon described and that I have subdivided the same into lots, blocks, and streets as shown hereon, and the number and size of the lots and the length of all lines are plainly set forth, and that this plat is a correct representation of the said subdivision and I do hereby dedicate to the public for public use all streets hereon as shown and I do hereby designate said subdivision as THE HAINES SUBDIVISION.

IN WITNESS WHEREOF I have set my hand and seal this 24th day of November 1964.
Mildred L. Haines

STATE OF OREGON } ss
 County of Jackson }

November 24, A.D. 1964

Personally appeared before me the above named Mildred L. Haines and acknowledged the foregoing instrument to be her voluntary act and deed. Before me

Horace Myers
Notary Public for Oregon

My commission expires the 16th day of September 1967.

SURVEYOR'S CERTIFICATE

STATE OF OREGON } ss
 County of Jackson }

I, L.E. Ager, a duly registered Surveyor of the State of Oregon, being first duly sworn, do hereby certify that I have correctly surveyed and marked with the proper monuments as provided by law the tract of land hereon shown and the said plat is a correct representation of the same, and the following is an accurate description of the boundary lines. Commencing at a 2 inch iron pipe at the Easterly Northeast corner of the Guetzlaff Subdivision, in the City of Ashland, Jackson County, Oregon, according to the official plat thereof now of record, which is the initial point of beginning; thence N.89°53'W. 110.0 feet; thence N. 0°07'E. 400.0 feet; thence S.89°53'E. 110.0 feet; thence S.0°07'W. 400.0 feet to the initial point of beginning.

L. E. Ager
Surveyor

Subscribed and sworn before me this 19th day of November, 1964.

Horace Myers
Notary Public for Oregon

My commission expires the 16th day of September, 1967.
 Filed for record this 17 day of December 1964 at 4:31 o'clock P.M. and recorded in Volume 9 of Plats at page 55 of Records of Jackson County.

Emy J. J. J.
County Clerk

By _____
Deputy

Examined and approved by the Talent Irrigation District in regular session this 1st day of December 1964.

W. H. Hogshuber Secretary
Frank P. ... President

Examined and approved by the City of Ashland Planning Commission in regular session this 27 day of NOVEMBER 1964.

W. S. Kinney Secretary
Floyd G. Vogel President

Examined and approved for the City of Ashland this 27th day of November 1964.

Allen A. ...
City Engineer

Examined and approved this 17th day of December 1964.

Shad W. Hatten
County Assessor

All taxes paid in full to date this 17 day of December 1964.

De Armond ...
County Sheriff

For order of the County Court approving this plat see Volume _____, page _____, of County Commissioners Journal of Proceedings.

Emy J. J. J.
County Clerk

By _____
Deputy

SURVEY NARRATIVE TO COMPLY WITH ORS 209.250

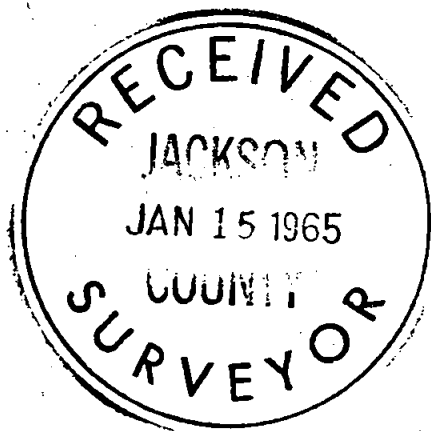
FOR: Mildred Haines, 224 Vista Street, Ashland, Oregon.

LOCATION: N.W. Quarter of S.W. Quarter of Section 14, Township
39 South, Range 1 East, Willamette Meridian.

PURPOSE: To subdivide a tract of land into lots and Block,
for filing for record as a recorded subdivision.

PROCEDURE: The parcel of land is bounded on the West and South by the GUETZLAFF SUBDIVISION and on the East by Clay Street, the Southeast corner of the tract formerly monumented with a two inch iron pipe being the initial point of the Guetzlaff Subdivision, which I used for the initial point of this subdivision. For the lots and block boundaries I used the East line of the Guetzlaff Subdivision for the West line and the West line of Clay Street for the East line thereof. Set iron pipes at lot and block corners.

Said Subdivision named HAINES SUBDIVISION:
Meridian based on record bearing of Guetzlaff Subdiv, ision.



L. E. Ager

