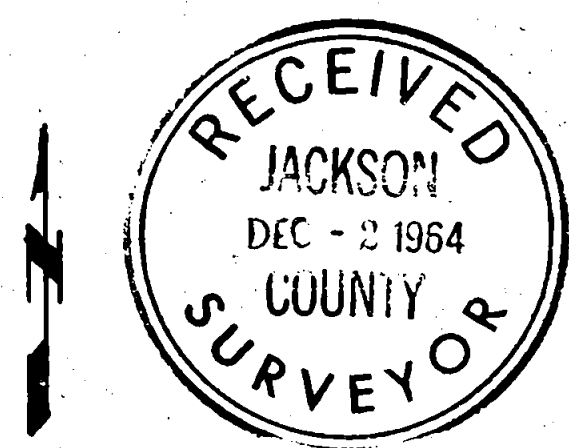
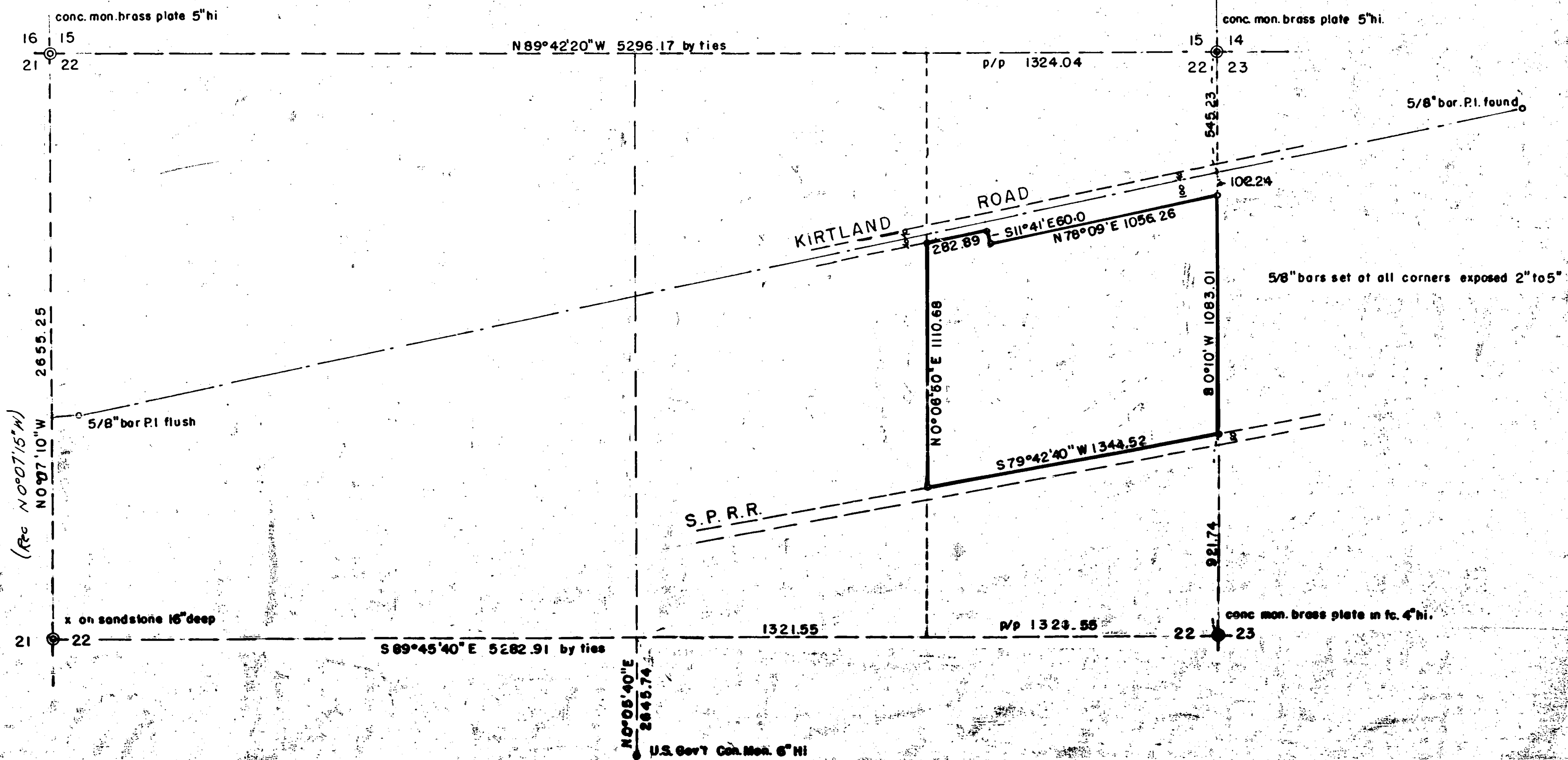


Survey for Mr. James Nistler, 406 W. Main St. Medford, Oregon.  
 Located in NE 1/4 & S.E. 1/4 of the N.E. 1/4 S. 22, T. 36 S. R. 2 W. Jackson County, Oregon.  
 Bearings from Survey No. 310 Date July 20, 1964  
 Scale 1" = 400'



REGISTERED  
 OREGON  
 LAND SURVEYOR  
*L. N. Dow*  
 MAY 5, 1949  
 L. N. DOW  
 251



Written narrative to accompany plat for Survey No. **2648**  
Survey for Mr. James Nistler, 406 W. Main Street, Medford, Oregon.  
Located in NE 1/4 and SE 1/4 of the NE 1/4 S 22, T 36S. R 2 W.  
Jackson County, Oregon.

Bearings from survey No. 310 July 20, 1964

Scale 1" = 400'

Found the concrete monuments for corners 14, 15, 22 & 23  
concrete monument 1/4" corner 22-23  
Stone with cross for the 1/4 corner 21-22  
Concrete monument with brass plate for 1/4 cor 22-27

found 5/8" bars in the pavement for the P.I. points on  
Kirtland Road as shown on the plat.

Chain tie was made to 14, 15, 22 & 23 from Kirtland Road  
Traverse chained on Kirtland Road to westernmost P.L.  
Chain tie was then made to corner 15, 16, 21 & 22 and to 1/4 Cor  
stone for 21, 22. All points were co-ordinated and temporary  
points set for survey corners, from which a triangulation tie  
was made to the 1/4 corner monument Section 22, 27 and from  
coordinates all positions were computed and set as shown.

