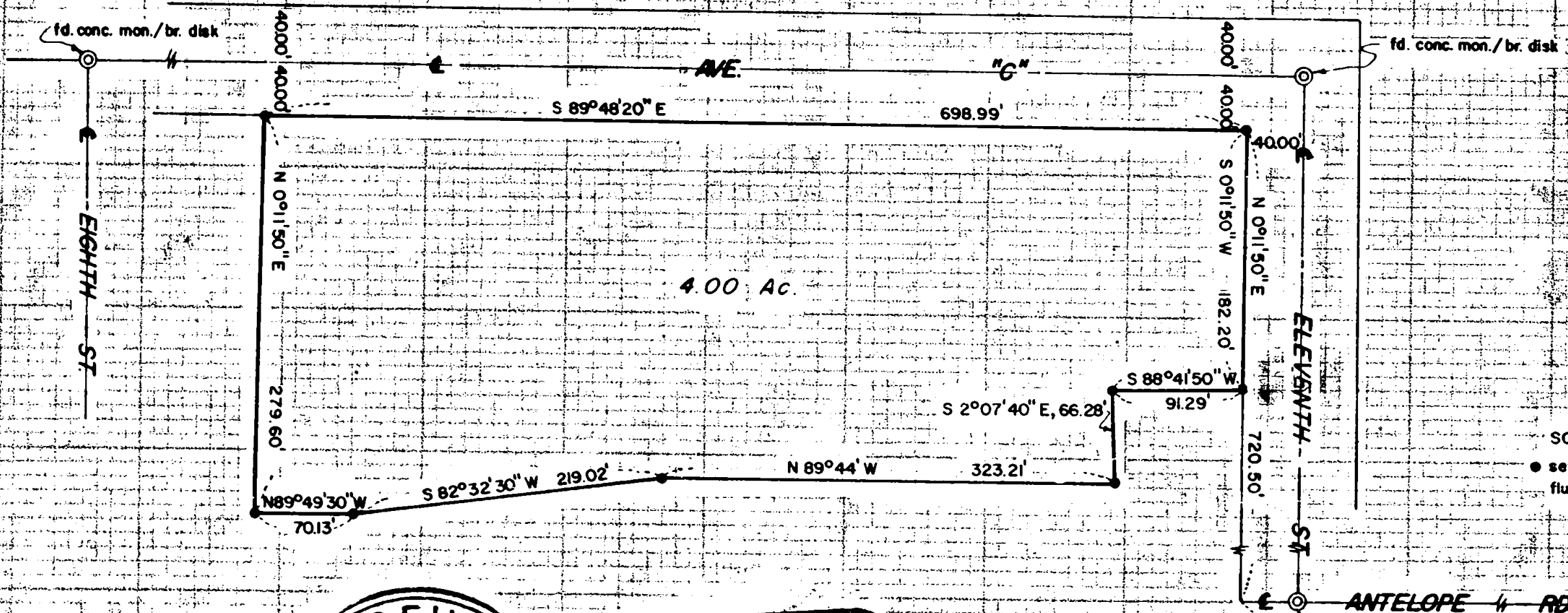


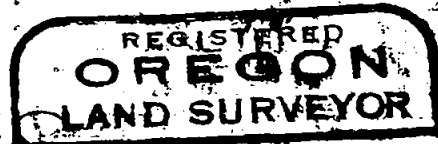
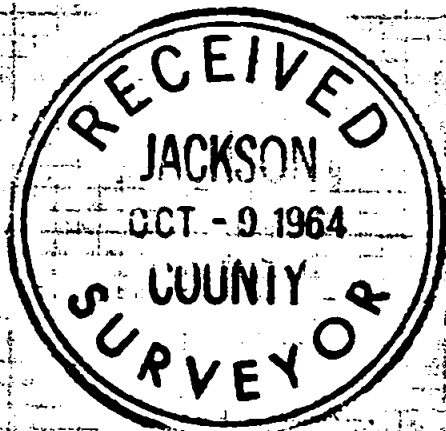
2626

Survey For:
WHITE CITY REALTY CO.
Located in the N.E. 1/4
Sec. 19, T36SRW, W.M.
By: Mark E. Boyden
July 16, 1964



SCALE: 1"=100'
● set 3/4" X 5/8" pin flush

BASIS OF BEARINGS:
Army Engrs. solar
of Base Line axis



Mark E. Boyden
NOVEMBER 1961
MARK E. BOYDEN
281

2626

N 09°17'40" W
639.36'
19
20
1/4 Cor

Survey No. 2626

SURVEY NARRATIVE TO COMPLY WITH O.R.S. 209.250
REVISED BY CHAPTER 555, O.L. 1963

FOR: White City Realty Co.
P.O. Box 526
White City, Oregon

PURPOSE: To monument and describe a parcel within the
White City Realty Co. ownership.

PROCEDURE:

Found controlling street center monuments previously set
by the Army Engineers for the Camp White Military Reservation.

Monumented the parcel as shown.

October 8, 1964

