

SURVEY MAP

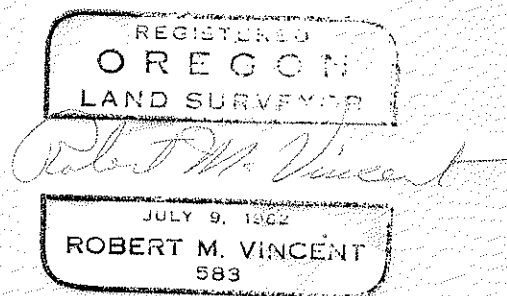
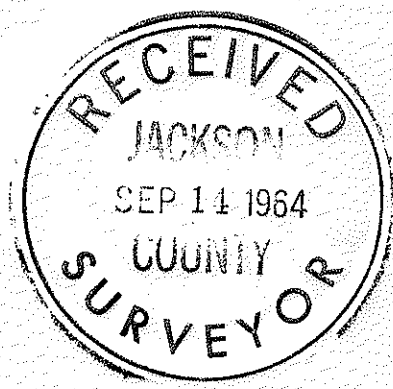
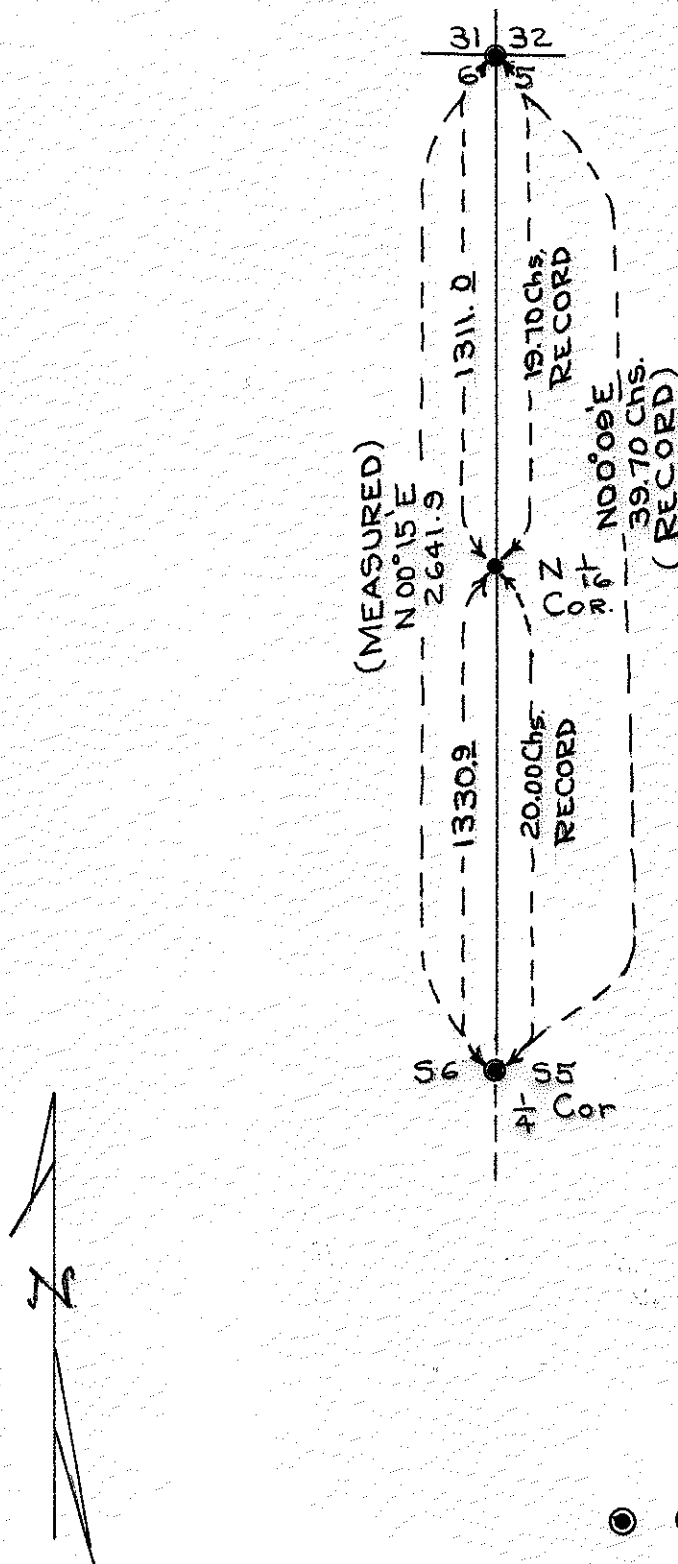
For - Elk Lumber Company

Location - Sections 5 and 6, T. 35 S., R. 2 W., W.M.

By - Robert M. Vincent

Scale - 1 Inch = 500 Feet

Date - August 18, 1964



Meridian by Solar Observation

- Cor Found - (Official Reestab. of Original Corner.)
- Cor Set by Survey.

SOLAR OBSERVATION SHEET

Date 7/23/64 Sec. 6 Twp. 35S Range 2W Obs. by Stockford & Scott
 Instrument No. 170951 Inst. Corr.: Horiz. 0°00' Vert. 0°00'
 Compass Brg. of Ref. Line _____ Mag. Decl. 20°
 Latitude 42°33.8' Elevation 2325 Temperature 75°
 Inst. at Sta. 3732 Pointing at Sta. 6 Horiz. Δ turned Clockwise
 Computation by Brandt Checked by _____

OBSERVED DATA	Trial 1	Trial 2	Trial 3
Horiz 1	85°21'	84°53'	84°30'
Horiz 2	85°04'	84°43'	84°18'
Horiz Mn.	85°12.5'	84°48'	84°24'
Vert 1	35°31'	36°01'	36°23'
Vert 2	35°50'	36°09'	36°36'
Vert Mn.	35°40.5'	36°05'	36°29.5'
Time 1	8:20	8:23	8:25
Time 2	8:22	8:24	8:26
Time Mn.	8:21	8:24	8:26

SUN'S DECLINATION "d"	Trial 1	Trial 2	Trial 3
Std. Time of Obs.	8:21	8:24	8:26
Corr for 24 Hr Basis	—	—	—
Corr for Long. (+8 Hrs.)	8:00	8:00	8:00
G.C.T.	16:21	16:24	16:26
Sun's d° Oh G.C.T.	20° 07.2'	20° 07.2'	20° 07.2'
Ch/Hr <u>52</u> x <u>16.4</u> Hrs.	8.5'	8.5'	8.5'
Sun's d° at Time of Obs.	19° 58.7'	19° 58.7'	19° 58.7'

SUN'S ALTITUDE "h"	Trial 1	Trial 2	Trial 3
Meas. Alt.	35°40.5'	36°05.0'	36°29.5'
Refract. & Par <u>(1.3)(93)(95)+.12</u>	- 1.2'	- 1.2'	- 1.1'
True Altitude "h"	35°39.3'	36°03.8'	36°28.4'

FORMULA

$\cos Z = \frac{\sin d - \sin h \sin l}{\cos h \cos l}$ Z = Sun's Brg. East or West of North
 (East in AM West in PM)
 Negative val. of Cos Z indicates Z greater than 90°

Comp-Trial 1
 l = 42°33.8'
 d = 19°58.7'
 h = 35°39.3'
 sin d = 34167
 sin h = 58290
 sin l = 67641
 cos h = 81254
 cos l = 73653
 $\cos Z = \frac{(34167) - (58290)(.67641)}{(.81254)(.73653)}$
 = -.07791
 Z = 524°57.9'E
 Z ± Horiz. Δ = Brg. Ref. Line = 50°15.1'W

Comp-Trial 2
 l = 42°33.8'
 d = 19°58.7'
 h = 36°03.8'
 sin d = 34167
 sin h = 58868
 sin l = 67641
 cos h = 80936
 cos l = 73653
 $\cos Z = \frac{(34167) - (58868)(.67641)}{(.80936)(.73653)}$
 = -.07495
 Z = 584°33.2'E
 Z ± Horiz. Δ = Brg. Ref. Line = 50°14.8'W

Comp-Trial 3
 l = 42°33.8'
 d = 19°58.7'
 h = 36°28.4'
 sin d = 34167
 sin h = 59445
 sin l = 67641
 cos h = 80413
 cos l = 73653
 $\cos Z = \frac{(34167) - (59445)(.67641)}{(.80413)(.73653)}$
 = -.07171
 Z = 584°08.7'E
 Z ± Horiz. Δ = Brg. Ref. Line = 50°15.1'W

SURVEY NARRATIVE TO COMPLY WITH O.R.S. 209.250 REVISED
BY CHAPTER 555, O. L. 1963.

FOR - ELK LUMBER COMPANY
P. O. BOX 606, MEDFORD, OREGON

PURPOSE -

1. To determine and mark the true section line from the one quarter corner common to Sections 6 and 5, Township 35 South, Range 2 West, Willamette Meridian to the Section corner common to Sections 31, 32, 6 and 5, Townships 34 and 35 South, Range 2 West.
2. To establish by proportionate measurement the North one sixteenth corner on the Section line between Sections 6 and 5, Township 35 South, Range 2 West, W. M.

PROCEDURE -

1. Identified the section corner common to Sections 31, 32, 6 and 5, Townships 34 and 35 South, Range 2 West and the quarter corner common to Sections 6 and 5, Township 35 South, Range 2 West.
2. Traversed with transit and tape between the above designated corners.
3. Computed the bearing of the true section line and established it on the ground by transit and tape survey, forming a closed traverse. Found the relative error of closure to be 1: 37, 740.
4. Computed the position of the North one sixteenth corner on the section line common to Sections 6 and 5 and monumented and referenced as shown below.

CORNERS -

1. The section corner common to Sections 31, 32, 6 and 5, Townships 34 and 35 South, Range 2 West is monumented with a USBLM Cadastral Engineers pipe and brass cap stamped and referenced as indicated in the official record. Also a 2 inch pipe is set on the Easterly side of the above described monument.
2. The quarter corner common to Sections 6 and 5, Township 35 South, Range 2 West is a 1" pipe from original evidence by the County Surveyor in 1946. Both CS bearing trees are in good condition with faces headed over. We opened the upper face of the Northwest tree to expose scribing.
3. We monumented the North one sixteenth corner on the section line between Sections 6 and 5 with a 1 inch by 36 inch galvanized steel pipe driven 26 inches in the ground and capped with a 1-1/2 inch to 1 inch galvanized bell reducer filled with pot metal and stamped as shown below in 1/8 inch letters and numerals:

1964
T 35 S R 2W
S6 + S55
N 1/16 COR
RS 583

From the above described corner monument a 22 inch Douglas Fir, double blazed and scribed RS 583 in the upper face and "BT" in the lower, bears S 22° 35' W 34.0 feet, and a 12 inch White Oak double blazed and scribed RS 583 in the upper face and "BT" in the lower, bears N 49° 30' E 34.9 feet. Distances were taken to face of blaze and compass variation was set at 20°00' East.

MERIDIAN - By solar observations.

Field work by B. Brandt, M. Stockford, D. Pfaff and R. Vincent
18, 1964.

Received by
Jackson Co. Surveyor
September 19, 1964

