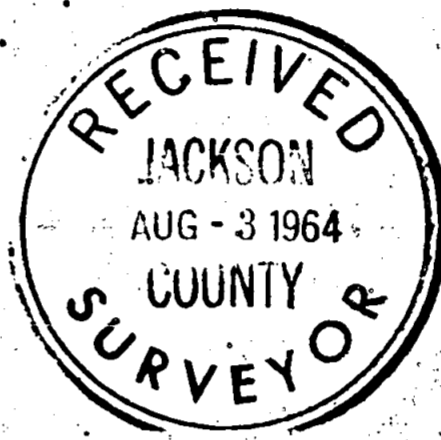
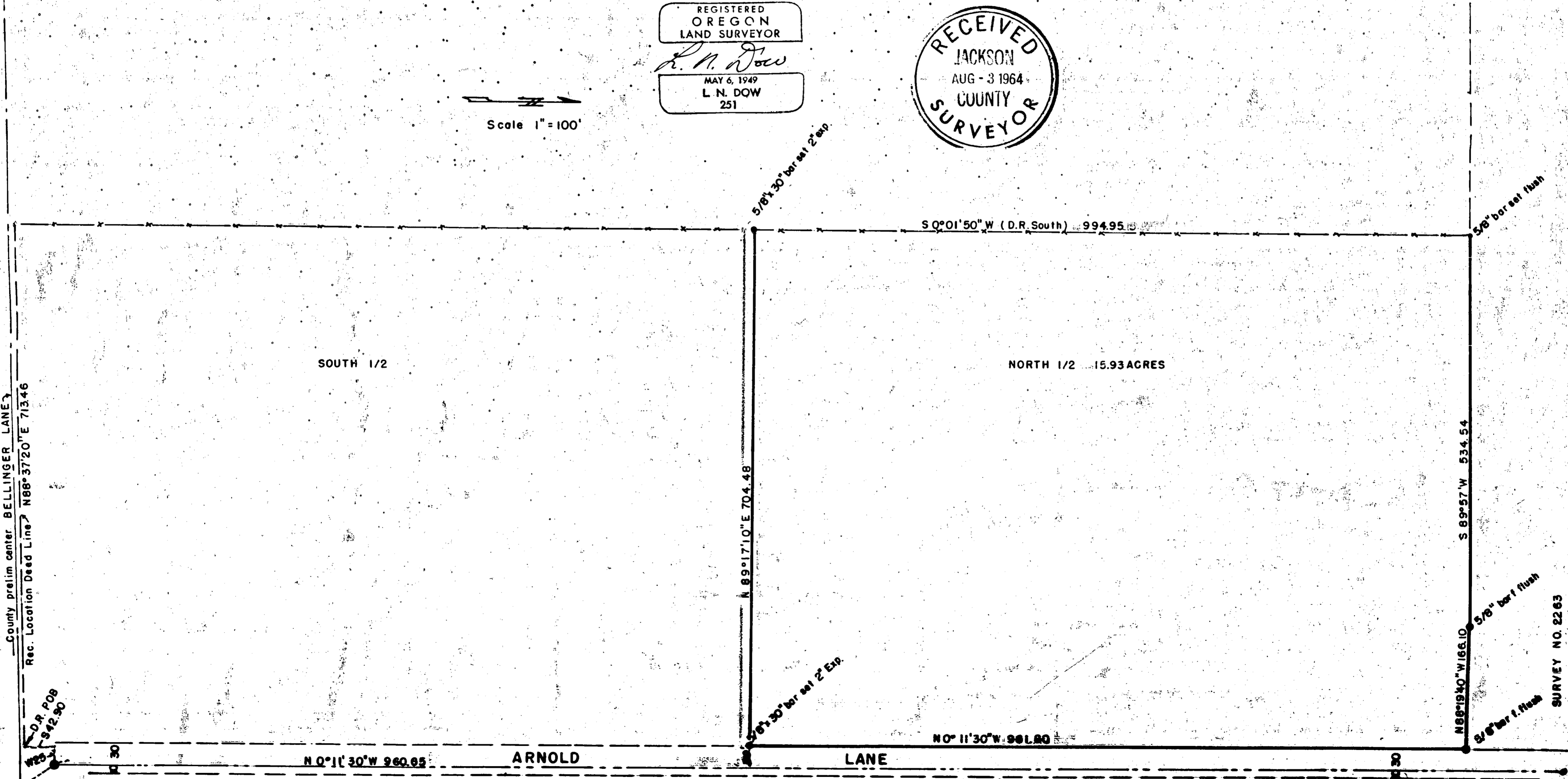


SURVEY FOR MR. CLOYCE & SUE BARNES of R 1 Box 1341 TALENT, OREGON
 LOCATED IN N.W. 1/4 of N.W. 1/4, S.W. 1/4 of N.W. 1/4 S 34; and in N.E. 1/4 of N.E. 1/4 and
 S.E. 1/4 of N.E. 1/4 S 33. Township 37 S. R. 2 W. (W.M.) JACKSON COUNTY, OREGON.
 DATE JUNE 30, 1964 Bearings from Survey No. 2263.
 5/8"x30" bars set as shown.

REGISTERED
 OREGON
 LAND SURVEYOR
L. N. Dow
 MAY 6, 1949
 L. N. DOW
 251



Scale 1" = 100'



SURVEY NO. 2263

D.L.C. No. 78

2569

Written narrative to accompany plat for Survey NO.

Survey for Cloyce and Sue Barnes, R 1 Box 1341 Talent, Oregon.

Located in NW 1/4 of NW 1/4, SW 1/4 of NW 1/4, Section 34
and NE 1/4 of NE 1/4 and SE 1/4 of NE 1/4 Section 33
Township 37S. R 2 W. Jackson County, Oregon.

Date June 30, 1964 Bearings from Survey No 2263.

5/8" x 30" bars set flush at corners as shown.

Proceenure: from the strad points over the stone monument for the Southwest corner of DLC No. 78 a sight was set up over the 5/8" bar at the Northwest corner of DLC 78 and a line was chained northerly from the SW cor 78 to opposite a 5/8" bar found for the southeast corner set on Survey NO 2263.

then followinh the south line of survey 2253 we ran N 88°19'40" 30.02 feet to a 5/8" bar found,
then ran N 88°19' 40" west to a 5/8" bar found,
then ran along the south line of survey no. 2263 S 89°57'W 534.54 feet which is deed record and had to remove a corner fence post to set a 5./8" pin for this corner

Then we returned and set deed record point for the POB of this tract from the Southwest corner of DLC 78 as shown on map

Then tied the County Preliminary line to the D.L.C. Corner and find the preliminary line to be south of the Deed Record Line.

then from the Deed record POB we ran Deed Record N 88°37'20" East 713.46 (deed Record 713.46 feet) and find the north and south fence to be set on the deed record line.

then splitting out the north 1/2 by acreage (less the co. Road R/W) as near as possible we set a 5/8" bar on the west line of Arnold Lane at a point N 0°11'30" West 960.65 feet and N 89°17'10" E 30.00 feet from the Donation Land Claim Line

from the last point we ran N 89°17'10"E 704.48 feet and set a 5/8" bar for the southwest corner of the north half as shown.

