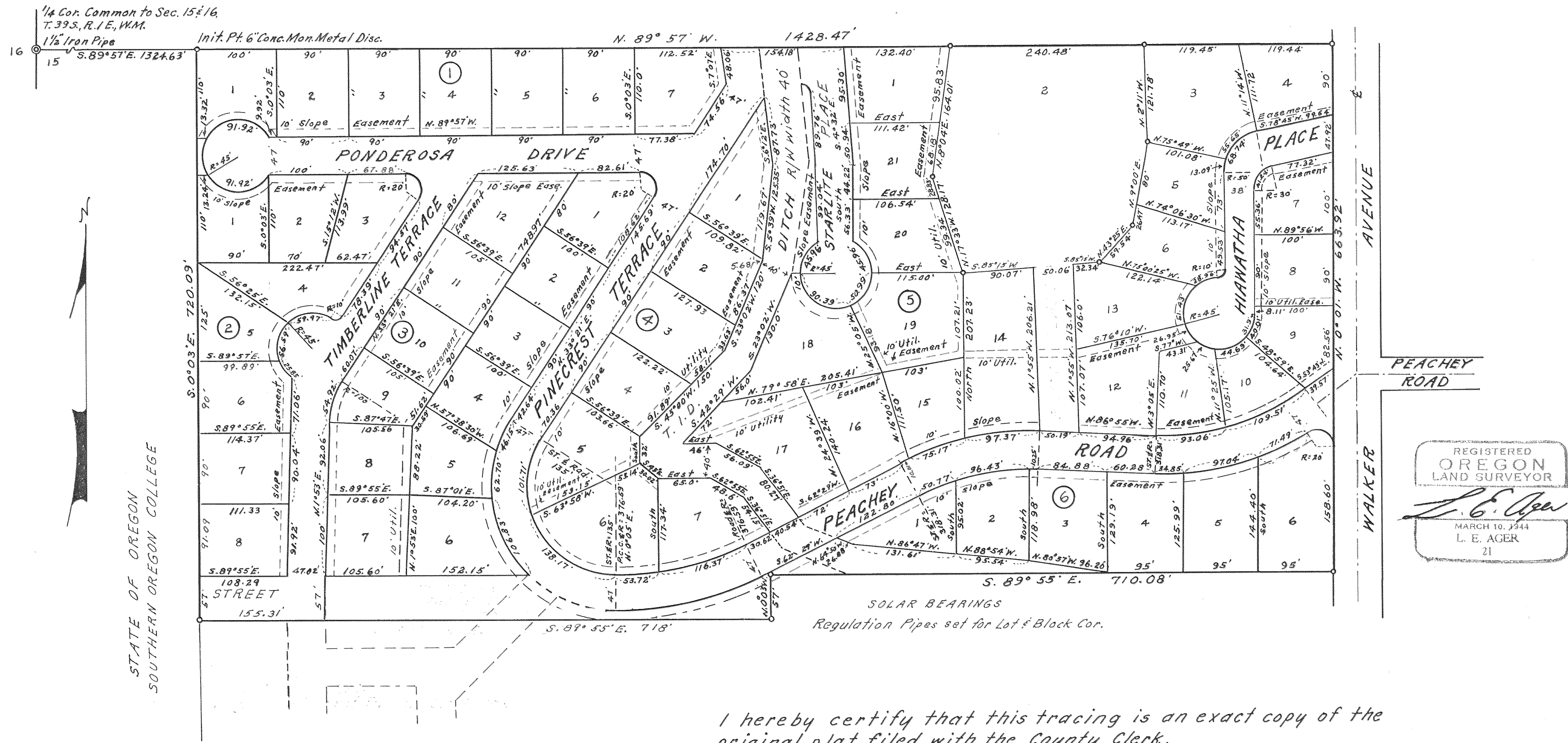


# TIMBER LINE SUBDIVISION

SECTION 15, T.39 S., R.1 E., W.M.

IN THE CITY OF ASHLAND, JACKSON COUNTY, ORE.

SCALE: 1" = 100'



I hereby certify that this tracing is an exact copy of the original plat filed with the County Clerk.

*L. E. Ager*  
Surveyor

# TIMBER LINE SUBDIVISION

SECTION 15, T 39 S., R. 1 E., W. M.

IN THE CITY OF ASHLAND, JACKSON COUNTY, ORE.

## DEDICATION

## SURVEYOR'S CERTIFICATE

KNOW ALL MEN BY THESE PRESENTS that we, Joe P. Jarvis, Ruth A. Jarvis, Karl W. Windbigler and Pearl N. Windbigler are the owners in fee simple of the lands hereon described and that we have subdivided the same into lots, blocks and streets as shown hereon, and the number and size of the lots and the length of all lines are plainly set forth, and that this plat is a correct representation of the subdivision, and we do hereby dedicate to the public use all streets as shown hereon and we do hereby designate said subdivision as Timber Line Subdivision. IN WITNESS WHEREOF we have set our hands and seals this 13<sup>th</sup> day of May 1964

STATE OF OREGON }  
County of Jackson }<sup>ss</sup>  
I, L. E. Ager, a duly registered surveyor of the State of Oregon, being first duly sworn, do hereby certify that I have correctly surveyed and marked with the proper monuments as provided by law, the tract of land hereon shown and the said plat is a correct representation of the same, and the following is an accurate description of the boundary lines: Beginning at the Northwest corner of the Northeast Quarter of the Southwest Quarter of Section 15, Township 39 South, Range 1 East of the Willamette Meridian, Jackson County, Oregon, at a point S. 89° 57' E. 1324.63 feet from the West Quarter corner of said Section; thence S. 0° 03' E. 720.09 feet; thence S. 89° 55' E. 718.0 feet; thence N. 0° 03' W. 57.0 feet; thence S. 89° 55' E. 710.08 feet to the West line of Walker Avenue; thence N. 0° 01' W. along said line 663.92 feet to the South line of the North half of said Section; thence N. 89° 57' W. along said line 1428.47 feet to the point of beginning.

Joe P. Jarvis  
Ruth A. Jarvis  
Karl W. Windbigler  
Pearl N. Windbigler

L. E. Ager  
Surveyor

STATE OF OREGON }  
County of Jackson }<sup>ss</sup>

Subscribed and sworn to before me, this 24<sup>th</sup> day of February 1964

May 13 AD 1964  
Personally appeared the above named, Joe P. Jarvis, Ruth A. Jarvis, Karl W. Windbigler and Pearl N. Windbigler and acknowledged the foregoing instrument to be their voluntary act and deed. Before me,

Lorraine A. Osborn  
Notary Public for Oregon

Lucille B. Brin  
Notary Public for Oregon

My Commission expires the 22<sup>nd</sup> day of December 1967

My Commission expires the 4<sup>th</sup> day of November 1964

Examined and approved by the City of Ashland Planning Commission this 11<sup>th</sup> day of May 1964

For order of the County Court approving this plat see Volume \_\_\_\_\_ page \_\_\_\_\_ of County Commissioners Journal of proceedings

Attest Hilda L. Kinney Secretary  
Floyd B. Vogel President

By \_\_\_\_\_ Deputy  
Erwin P. Pehl County Clerk

Examined and approved for the City of Ashland this 11<sup>th</sup> day of May 1964

603965  
Filed for record this the 28<sup>th</sup> day of July 1964 at 9:26 o'clock A.M. and recorded in Volume 9 of Plats at page 45 of Records of Jackson County.

Allen A. Alsing  
City Engineer

Erwin P. Pehl

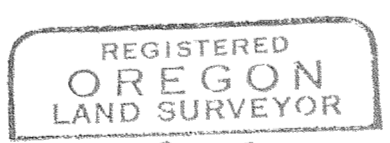
Examined and approved this 3<sup>rd</sup> day of June 1964

I hereby certify that this tracing is an exact copy of the original plat filed with the County Clerk.

By \_\_\_\_\_ Deputy  
Shad W. Hatten County Assessor

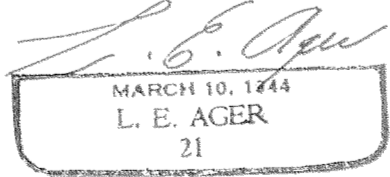
L. E. Ager  
Surveyor

All taxes paid in full to date this 14 day of July 1964



Examined and approved by the Talent Irrigation District in regular session this 5<sup>th</sup> day of May 1964

By \_\_\_\_\_ Deputy  
St. Leonard P. Pugh County Sheriff



Attest: W. H. Hoffmann Secretary  
Everett Rasmussen President

## SURVEY NARRATIVE TO COMPLY WITH O.R.S. 209.250

FOR: Karl N. Windbigler  
 575 South Walker Avenue,  
 Ashland, Oregon.

Joe Jarvis  
 1112 Reddy Avenue,  
 Medford, Oregon.

LOCATION: NW $\frac{1}{4}$  of SE $\frac{1}{4}$  and NE $\frac{1}{4}$  of SW $\frac{1}{4}$  of Section 15, Township 39  
 South, Range 1 East W.M., Jackson County, Oregon.

## PURPOSE:

To monument and describe the boundaries of and subdivide a tract  
 of land into lots, blocks and streets, this designated as  
 TIMBERLINE SUBDIVISION, in The City of Ashland, Oregon.

## PROCEDURE:

Traversed and established the true East-West  
 quarter line thru the Section.  
 The West quarter corner marked with a 1 $\frac{1}{2}$ " iron  
 pipe which was set in place from 2 original bearing  
 trees which were in place in 1946.  
 The East quarter corner marked with a 2" iron pipe  
 which was in place in 1956, this pipe in draw and  
 within the boundary of Verda Street in Terra Linda  
 Subdivision and referenced as follows: The NW corner  
 of Lot 1, Block 3 of said Subdivision bears S. 62° 39' E.  
 35.94 feet and the NE corner of Lot 2, Block 4,  
 bears S. 38° 39' W. 20.94 feet. Referenced 1956.  
 South quarter corner, set a 5/8" rebar for corner  
 from which the center of a 12" Red Fir bears South  
 15.25 feet, 2 face blazes. A 14" Red Fir Bears  
 N. 62° W. 15.20 feet to center, 2 face blazes.  
 This bar set from stump hole of a pine tree approx.  
 34" in Dia. which was identified as the location  
 of the original B.T. This tree dead and down. No  
 evidence of any other pine trees near. Bar set  
 N. 37° W. 12.54 feet from this point. For the original  
 Oak B.T. in the NW quad. found Oak shell which bears  
 N. 73° W. 34.98 feet from established corner.  
 No scribe found on either tree.  
 Ran a closed traverse around the SW quarter of the  
 Section. From the W. quarter Corner to SW corner,  
 bearing is S. 0° 04' 30" E. 2649.28 feet, found 2"  
 iron pipe for corner. From SW corner to S. quarter  
 corner as reestablished, S. 89° 49' E. 2646.96 feet.  
 From S. quarter corner to N. quarter corner, bearing  
 is N. 0° 01' 30" West a distance of 2655.44 feet to  
 intersect E-W quarter line. N. quarter corner, 1"  
 iron pipe in pavement, said pipe bears S. 59° 03' W.  
 112.0 feet from a 3/4" iron pipe on the West line  
 of Walker Avenue, See map of POUNDS TRACTS.  
 Bearing and distance from W. quarter corner to  
 center of section, S. 39° 57' E. 2649.26 feet.  
 I coordinated the corners of the SW quarter from  
 closed traverse and computed the bearings and  
 distances to the 1/16th corners or subdivisions  
 thereof for subdivision of Timberline Sub. control.  
 No sec. subdivision made of SE quarter of Section.  
 S. line of Timberline Sub. projected to West line  
 of Walker Avenue beyond E. line of SW quarter.  
 Said subdivision surveyed and monumented as shown  
 on map.  
 Bearing datum from solar observation for survey  
 No. 1982, these surveys tied together.

REGISTERED  
 OREGON  
 LAND SURVEYOR

MARCH 10, 1944  
 L. E. AGER  
 21

