

SURVEY MAP

For - Elk Lumber Company

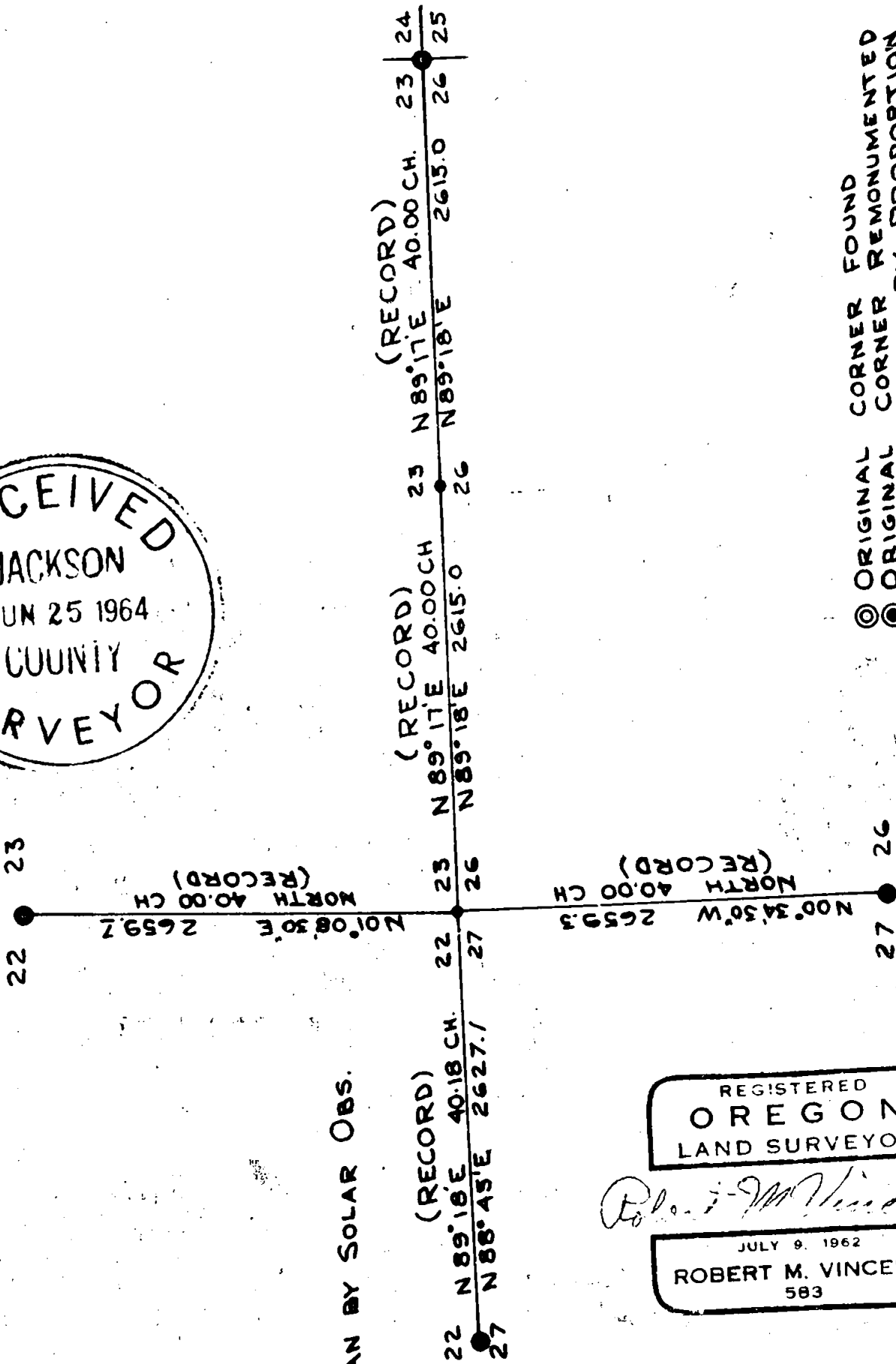
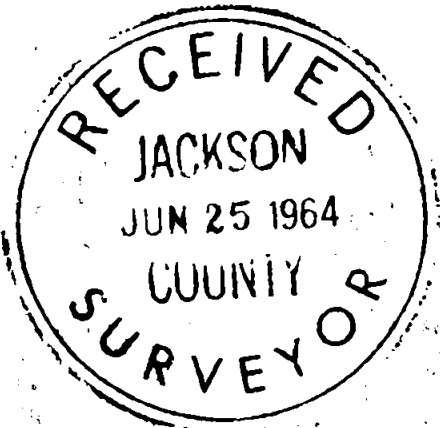
Location - Sections 22, 23, 26 and 27, T. 32 S., R. 1 E., W.M.

By - Robert M Vincent

Scale - 1 Inch = 1000 Feet

Date - June 22, 1964

2534



MERIDIAN BY SOLAR OBS.

REGISTERED
OREGON
 LAND SURVEYOR

Robert M Vincent

JULY 9, 1962
ROBERT M. VINCENT
 583

2534

SOLAR OBSERVATION SHEET

2534

Date 1/10/47 Sec. 26 Twp. 32S Range 1E Obs. by Brandt
 Instrument No. 100000 Inst. Corr: Horiz. 000' Vert. 000'
 Compass Brg. of Ref. Line Due S Mag. Decl. 20° 00'
 Latitude 42° 45' Elevation 2750 Temperature 40°
 Inst. at Sta D₃ Pointing at Sta D₄ Horiz Δ turned clockwise
 Computation by Brandt Checked by Vincent

| OBSERVED DATA | Trial 1 | Trial 2 | Trial 3 |
|---------------|-----------|-----------|---------|
| Horiz 1 | 38° 22' | 39° 06' | 39° 41' |
| Horiz 2 | 38° 15' | 39° 50' | 39° 27' |
| Horiz Mn. | 38° 21.5" | 39° 58" | 39° 34' |
| Vert 1 | 15° 47' | 15° 24' | 15° 25' |
| Vert 2 | 15° 02' | 14° 43' | 14° 21' |
| Vert Mn. | 15° 25' | 15° 03.5" | 14° 53' |
| Time 1 | 3:01 | 3:04 | 3:07 |
| Time 2 | 3:02 | 3:05 | 3:08 |
| Time Mn. | 3:02 | 3:04.5" | 3:07.5" |

| SUN'S DECLINATION d' | | | |
|-----------------------------|-------------|-------------|-------------|
| Std. Time of Obs. | 3:02 | 3:04.5 | 3:07.5 |
| Corr for 24 Hr Basis | 12:00 | 12:00 | 12:00 |
| Corr for Long. (+8 Hrs) | -8:00 | -8:00 | -8:00 |
| G.C.T. | 23:02 | 23:04.5 | 23:07.5 |
| Sun's d' Oh G.C.T. | S 22° 05.6' | S 22° 05.6' | S 22° 05.6' |
| Ch/Hr = <u>-0.36</u> x Hrs. | 23.0 - 8.3 | 23.0 - 8.3 | 23.0 - 8.3 |
| Sun's d' at Time of Obs. | S 21° 57.3' | S 21° 57.3' | S 21° 57.3' |

| SUN'S ALTITUDE h | | | |
|--------------------|---------------|---------------|---------------|
| Meas. Alt. | 15° 25' | 15° 02.5' | 14° 42.5' |
| Refract & Par | -32.74 = -3.4 | -32.74 = -3.3 | -32.74 = -3.3 |
| True Altitude h | 15° 21.6' | 15° 03.3' | 14° 41.3' |

FORMULA

$\cos Z = \frac{\sin d' - \sin h' \sin l'}{\cos h' \cos l'}$ $Z =$ Sun's Brg. East or West of North
 (East in AM West in PM)
 Negative val. of Cos Z indicates Z greater than 90°

Comp-Trial 1

$l = 42^{\circ} 45'$
 $d = 21^{\circ} 57.3'$
 $h = 15^{\circ} 21.6'$
 $\sin d = .37388$
 $\sin h = .26497$
 $\sin l = .67574$
 $\cos h = .96426$
 $\cos l = .73428$

$$\cos Z = \frac{(-.37388) - (.26497)(.67574)}{(.96426)(.73428)} = \frac{-.55378}{.70804} = -.78209$$

$\begin{array}{r} 38 \ 33 \\ 38 \ 21.5 \\ \hline 11.5 \end{array}$

$Z = S 78^{\circ} 22' W$

$Z \pm$ Horiz Δ = Brg. Ref. Line = 00° 15' W

Comp-Trial 2

$l = 42^{\circ} 45'$
 $d = 21^{\circ} 57.3'$
 $h = 15^{\circ} 03.3'$
 $\sin d = .37388$
 $\sin h = .25840$
 $\sin l = .67574$
 $\cos h = .96591$
 $\cos l = .73428$

$$\cos Z = \frac{(-.37388) - (.25840)(.67574)}{(.96591)(.73428)} = \frac{-.54963}{.70725} = -.77495$$

$\begin{array}{r} 39 \ 12 \\ 38 \ 58 \\ \hline 0 \ 14 \end{array}$

$Z = S 70^{\circ} 17' W$

$Z \pm$ Horiz Δ = Brg. Ref. Line = S 00° 14' W

Comp-Trial 3

$l = 42^{\circ} 45'$
 $d = 21^{\circ} 57.3'$
 $h = 14^{\circ} 41.3'$
 $\sin d = .37388$
 $\sin h = .25225$
 $\sin l = .67574$
 $\cos h = .96740$
 $\cos l = .73428$

$$\cos Z = \frac{(-.37388) - (.25225)(.67574)}{(.96740)(.73428)} = \frac{-.54582}{.71034} = -.76839$$

$\begin{array}{r} 39 \ 37.5 \\ 39 \ 34 \\ \hline 0 \ 13.5 \end{array}$

$Z = S 39^{\circ} 47.5' W$

$Z \pm$ Horiz Δ = Brg. Ref. Line = S 00° 13' W

Mean Brg S 00° 13' 45" W

From the corner monument described above I marked the following bearing trees:

An 8 inch Douglas fir, double blazed and scribed "RS 583" in the upper blaze and "BT" in lower bears North 76°30' East 35.05 feet to face of upper blaze.

A 24 inch Douglas fir double blazed and scribed "RS 583" in upper blaze and "BT" in lower, bears South 43°00' East 52.35 feet to face of lower blaze.

A 7 inch Douglas fir, double blazed and scribed "RS 583" in upper blaze and "BT" in lower bears North 85°30' West 13.4 feet to face of upper blaze.

A 7 inch Douglas fir, double blazed and scribed "RS 583" in upper blaze and "BT" in lower bears North 06°00' West to face of lower blaze.

Old approximate corner bears South 34°00' East 47.4 feet.

Compass variation set at 20°00' East.

4. Single proportionate reestablishment of quarter corner common to Sections 23 and 26, T. 32 S., R. 1 E., W. M.

At calculated proportionate position for the quarter corner set a 1 inch by 36 inch galvanized steel pipe driven 22 inches in the ground and capped with a 1-1/2 inch to 1 inch galvanized bell reducer filled with pot metal and stamped as shown below in 1/8 inch letters and numerals:

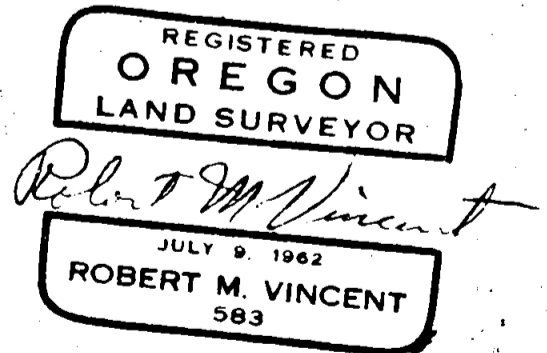
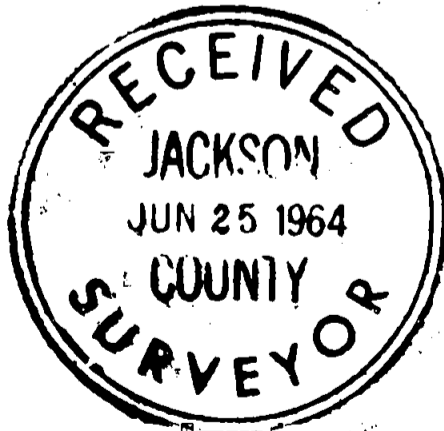
1963
T 32 S R 1 E
23
26
PROP. 1/4 COR.
RS 583

From the corner monument described above a 13 inch Douglas fir bears South 62°00' West 18.9 feet to face of lower blaze and a 7 inch Douglas fir bears North 47°00' East 22.8 feet to face of upper blaze. Both trees double blazed and scribed "RS 583" in upper blaze and "BT" in lower.

From the proportionate corner position an old approximate corner bears South 21°57' West 28.4 feet. No evidence of the original monument or its accessories.

MERIDIAN - By solar observations.

Field work by B. Brandt, K. Neville and R. Vincent. Completed June 9, 1964.



had seen the original Southwest BT when it was down and badly deteriorated but still showed scribe markings in a slab of pitch-impregnated wood.

For corner monument set a 1 inch by 36 inch galvanized steel pipe driven 30 inches in the ground and capped with a 1-1/2 inch to 1 inch galvanized bell reducer filled with pot metal and stamped as shown below in 1/8 inch letters and numerals:

RS 583
T 32 S R 1 E
22
27
1/4 COR
1964

From this monument an 11 inch Douglas fir double blazed and scribed "RS 583" in the upper blaze and "BT" in the lower, bears South 60°00' East 13.85 feet and a 19 inch White Fir, double blazed and scribed "RS 583" in the upper blaze and "BT" in the lower bears South 64°00' West 38.5 feet. Distances were taken to face of lower blaze. Compass variation set at 20°00' East.

2. Rehabilitation of quarter corner common to Sections 26 and 27, T. 32 S., R 1 E., W. M.

Found the original Northwest BT which is now a 17.5 inch Douglas fir snag and reopened the lower face to expose the "BT" scribe. Found no trace of the original Southeast BT or the original stone monument.

At the record bearing and distance from the above-described Northeast BT I set a 1 inch by 36 inch galvanized steel pipe driven 30 inches in the ground and capped with a 1-1/2 inch to 1 inch galvanized bell reducer filled with pot metal and stamped as shown below in 1/8 inch letters and numerals:

RS 583
T 32 S R 1 E
27 - 26
1/4 COR
1963

From the corner monument described above a 36 inch Douglas fir, single blazed and scribed "RS 583 BT", bears South 69°00' East 17.4 feet and an 18 inch Douglas fir, single blazed and scribed "RS 583 BT" bears North 34°00' West 28.4 feet. Distances taken to face of blaze and compass variation set at 20°00' East.

3. Double proportionate reestablishment of section corner common to Sections 22, 23, 26, and 27, T. 32 S., R. 1 E., W. M.

At the calculated proportionate position for the section corner set a temporary point and conducted an intensive search for evidence of the original corner accessories. At a point about 50 feet Southeast of the proportionate point found a 24 inch Douglas fir with open face and cruisers' marks but after considerable work could find no scribe marks or other evidence to indicate that it was an original BT so returned to the calculated corner point and monumented and referenced as follows:

For corner monument I set a 1 inch by 36 inch galvanized steel pipe driven 30 inches in the ground and capped with a 1-1/2 inch to 1 inch galvanized bell reducer filled with pot metal and stamped as shown below in 1/8 inch letters and numerals:

1963
T 32 S R 1 E
22 | 23
27 | 26
PROP. SEC. COR.
RS 583

SURVEY NARRATIVE TO COMPLY WITH O.R.S. 209.250, REVISED BY CHAPTER 555, O. L. 1963

FOR - ELK LUMBER COMPANY
P. O. BOX 606, MEDFORD, OREGON

PURPOSE -

1. To rehabilitate and perpetuate the quarter corner common to Sections 22 and 27, Township 32 South, Range 1 East, W. M., and the quarter corner common to Sections 26 and 27 of the same township and range.
2. To reestablish by proportionate measurement the section corner common to Sections 22, 23, 26 and 27, and the quarter corner common to sections 23 and 26; both corners being in Township 32 South, Range 1 East, W. M.
3. To determine and mark the true North line of the Northeast quarter and the true West line of the Northwest quarter of Section 26, Township 32 South, Range 1 East., W.M.

PROCEDURE -

1. Identified and reestablished from evidence the quarter corner common to Sections 22 and 27.

Identified and rehabilitated the quarter corner common to Sections 26 and 27. Identified the section corner common to Sections 23, 24, 25 and 26 and the quarter corner common to Sections 22 and 23.

2. Ran transit and tape traverse from the quarter corner common to Sections 22 and 27 easterly to the section corner common to Sections 23, 24, 25 and 26.
3. Ran transit and tape traverse from the quarter corner common to Sections 26 and 27 northerly to the quarter corner common to Sections 22 and 23.
4. Computed the position the section corner common to Sections 22, 23, 26 and 27 by the method of double proportionate measurement.

Computed the position of the quarter corner common to Sections 23 and 26 by the method of single proportionate measurement between the re-established corner of Sections 22, 23, 26 and 27 and the original corner to Sections 23, 24, 25 and 26. Monumented and referenced these two corners as shown below.

5. Marked required segments of true line with blazes and aluminum tags stamped "Elk PL".

CORNERS -

1. Reestablishment of quarter corner common to Sections 22 and 27, T. 32 S., R 1E., W.M.

At present there is no positive direct evidence of the original corner position; however, on March 22, 1948 I visited this corner and found its location marked with a 1/2 inch steel pipe set by John Cox from original evidence available prior to logging activity in the early 1940's. At that time (1948) I identified a 40 inch Douglas fir windfall as being the original Northwest B.T. Logging activity subsequent to 1948 has destroyed all previously existing evidence except that the above-mentioned Douglas fir windfall was undisturbed. I therefore set the corner at the record bearing and distance from the stump hole of this tree. This location is further substantiated by the intersection of old cutting lines and cruisers' marks and by the spring branch called in the field notes of the original survey. Mr. Gene Ash, a long time resident of the area, stated that he