

SURVEY MAP

For — Elk Lumber Company

Location — Sections 6 and 5 T. 32 S R. 2 E, W.M.

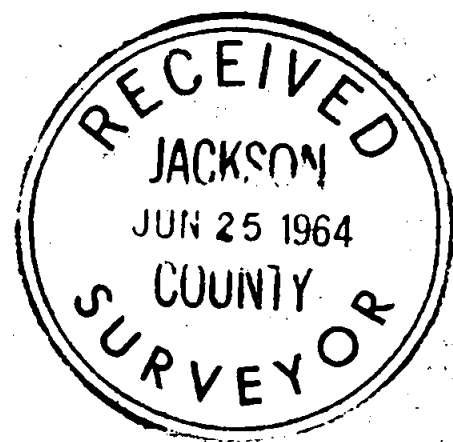
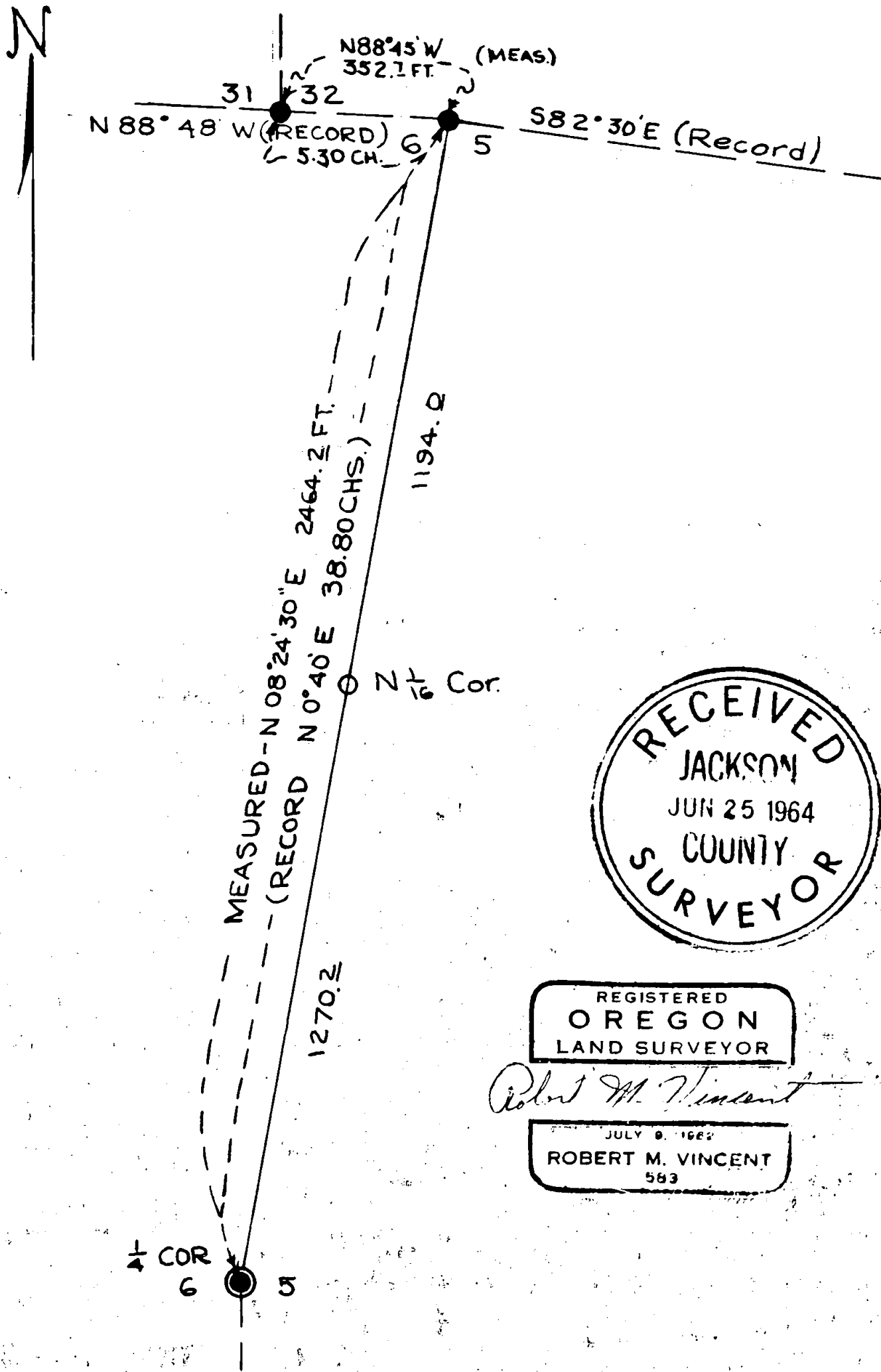
By — Robert M. Vincent

Meridian — By Solar Observation

Date — June 9, 1964

Scale — 1 Inch = 300 Feet

2533



REGISTERED
OREGON
LAND SURVEYOR

Robert M. Vincent

JULY 9, 1962
ROBERT M. VINCENT
583

- Gov't. Corner Found — Original Monument In Place — Rewitnessed
- ⊙ Gov't. Corner Remonumented — 1 In. Pipe With Cap
- Proportionate Corner Established By Survey — 1 In. Pipe With Cap

2533

SOLAR OBSERVATION SHEET

2533

Date April 11 Sec. 16 Twp. 33 Range 2E Obs. by P. P. H.
 Instrument No. 14 Inst. Corr: Horiz. — Vert. —
 Compass Brg. of Ref. Line N 10° 15' E Mag. Decl. 20° 00' E
 Latitude 42° 47' 31" Elevation 2950 Temperature 55°
 Inst. at Sta — Pointing at Sta E-L Horiz turned clockwise
 Computation by P. P. H. Checked by ✓

| OBSERVED DATA | Trial 1 | Trial 2 | Trial 3 |
|---------------|--------------|--------------|--------------|
| Horiz 1 | 112° 38' | 104° 39' | 105° 19' |
| Horiz 2 | 104° 10' | 105° 00' | 105° 43' |
| Horiz Mn. | 107° 54' | 104° 49' 30" | 105° 31' |
| Vert 1 | Dir 41° 54' | Inc. 42° 39' | Dir 42° 07' |
| Vert 2 | Inc. 42° 19' | Dir 42° 53' | Inc. 42° 25' |
| Vert Mn. | 42° 35' 30" | 42° 46' | 42° 16' |
| Time 1 PST | 9:07 AM | 9:12 | 9:15 |
| Time 2 PST | 9:09 AM | 9:13 | 9:16 |
| Time Mn. PST | 9:08 AM | 9:12.5 | 9:15.5 |

| SUN'S DECLINATION "d" | | | |
|---------------------------|------------------|---------------------|----------------------|
| Std. Time of Obs. | 9:07 | 9:12.5 | 9:15.5 |
| Corr for 24 Hr Basis | — | — | — |
| Corr for Long. (+8 Hrs.) | 9:00 | 8:00 | 8:00 |
| G.C.T. | 17:08 = 17:13.40 | 17:12.5 = 17:24.40 | 17:15.5 |
| Sun's "d" Oh G.C.T. | 14° 05.5' | 14° 05.5' | 14° 05.5' |
| Ch/Hr +0.79' x Hrs. | 79 x 110 = 13.4 | 79 x 122.5 = 9.6775 | 79 x 17.25 = 1.35375 |
| Sun's "d" at Time of Obs. | 14° 18.9' | 14° 18.9' | 14° 16.8' |

| SUN'S ALTITUDE "h" | | | |
|--|-----------|-----------|-----------|
| Meas. Alt. | 42° 06' | 42° 46' | 43° 16' |
| Refract. & Par. $+0.11 - (0.00002 \times h^2)$ | — | — | — |
| True Altitude "h" | 42° 05.4' | 42° 44.9' | 43° 14.9' |

FORMULA

$\cos Z = \frac{\sin d - \sin h \sin l}{\cos h \cos l}$ Z = Sun's Brg. East or West of North
 (East in AM West in PM)
 Negative val. of Cos Z indicates Z greater than 90°

Comp - Trial 1
 l = 42° 49.3'
 d = 14° 18.9'
 h = 42° 05.4'
 sin d = .24725
 sin h = .67030
 sin l = .67772
 cos h = .74209
 cos l = .73347

$\cos Z = \frac{(.24725) - (.67030)(.67772)}{(.74209)(.73347)}$
 = $\frac{-.20537}{.54430}$
 = $-.37730$
 Z = 112° 30.5'
 Z ± Horiz. Δ = Brg. Ref. Line = N 08° 36.5' E of N

Comp - Trial 2
 l = 42° 42.3'
 d = 14° 18.9'
 h = 42° 42.9'
 sin d = .24725
 sin h = .67930
 sin l = .67772
 cos h = .73434
 cos l = .73347

$\cos Z = \frac{(.24725) - (.67930)(.67772)}{(.73434)(.73347)}$
 = $\frac{-.21413}{.53862}$
 = $-.39755$
 Z = 113° 25.5'
 Z ± Horiz. Δ = Brg. Ref. Line = N 08° 36.0' E

Comp - Trial 3
 l = 42° 48.3'
 d = 14° 18.9'
 h = 42° 14.9'
 sin d = .24725
 sin h = .67130
 sin l = .67772
 cos h = .72839
 cos l = .73347

$\cos Z = \frac{(.24725) - (.67130)(.67772)}{(.72839)(.73347)}$
 = $\frac{-.19111}{.53425}$
 = $-.35787$
 Z = 114° 08'
 Z ± Horiz. Δ = Brg. Ref. Line = N 08° 37.0' E

Mean = N 08° 36.5' E RMV '64

follows: from the original corner monument, a 12 inch Madrone bears North 70°00' West 30.7 feet, single blazed and scribed "RS 583 BT".

Distance measured to face of blaze and compass variation set at 20°00' E.

3. Remonumentation of 1/4 corner 6/5, T. 32 S., R 2 E., W. M.

Found the stumps of both original BT's. The original SW BT is now a 34 inch Ponderosa Pine stump with lower blaze open and scribing destroyed by fire and decay. The original NE BT is now a 22 inch Ponderosa Pine stump. I opened the lower face and found the "BT" scribe intact. Record distances and record bearing to original SW BT checked out very well but found the bearing to the NE BT to be N 34° E as compared to the record bearing of N 40° E, so disregarded this latter bearing in reestablishing the corner point.

For corner monument set a 1 inch by 36 inch galvanized steel pipe driven 28 inches in the ground and capped with a 1-1/2 inch to 1 inch galvanized bell reducer filled with pot metal and stamped as shown below in 1/8 inch letters and numerals: -

1964
T 32 S R 2 E
S6 | S5
1/4 COR
RS 583

From this monument a 7 inch white Fir bears South 23° West a distance of 2.5 feet and a 6.8 inch Douglas fir bears North 27° East a distance of 9.7 feet. Both trees are double blazed and scribed "RS 583" in the upper blaze and "BT" in the lower. Distances were measured to the face of the lower blaze. Compass variation set at 20°00' East.

4. North 1/16 Corner on the section line, Sections 6 and 5, T. 32 S., R 2 E., W. M.

At the calculated proportionate position for this corner, set a 1 inch by 36 inch galvanized steel pipe driven 28 inches in the ground and capped with a 1-1/2 inch to 1 inch galvanized bell reducer filled with pot metal and stamped as shown below in 1/8 inch letters and numerals: -

1964
T 32 S R 2 E
S6 | S5
N 1/16 COR
RS 583

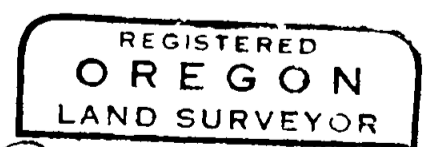
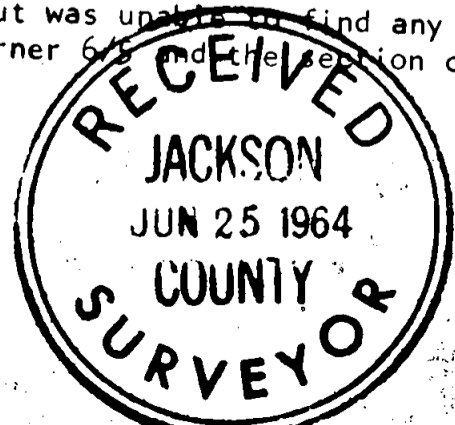
From this monument a 20 inch Douglas fir bears North 85° West 32.1 feet and a 20 inch Douglas fir bears North 40° East 32.9 feet. Both trees are double blazed and scribed "RS 583" in the upper face and "BT" in the lower. Distances measured to face of lower blaze. Compass variation set at 20°00' East.

MERIDIAN - Determined by solar observations.

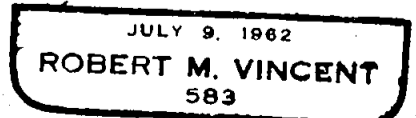
Field work by B. Brandt, D. Pfaff, M. Stockford and R. Vincent, completed June 9, 1964.

COMMENTS -

I found a well defined line of blazes which I believe to be originals from the section corner common to Sections 5, 6, 7 and 8 North to the 1/4 corner 6/5, but was unable to find any indication of the original survey between the 1/4 corner 6/5 and the section corner 32
6 | 5



Robert M. Vincent



SURVEY NARRATIVE TO COMPLY WITH O.R.S. 209.250, REVISED BY CHAPTER 555, O. L. 1963

FOR ELK LUMBER COMPANY
P. O. BOX 606, MEDFORD, OREGON

PURPOSE -

1. To remonument the 1/4 corner common to Sections 6 and 5, Township 32 South, Range 2 East, W. M.
2. To establish the North 1/16 corner on the section line common to Sections 6 and 5 of the above Township and Range.
3. To determine and mark the true position of the section line from the above described 1/16 corner, North to the section corner common to Sections 6 and 5.
4. To rehabilitate and perpetuate the section corner $\frac{32}{6|5}$, Township 32 South, Range 2 East and the section corner $\frac{31|32}{6}$, Township 31 South, Range 2 East, W. M.

PROCEDURE -

1. Found the remains of both original BT's for the 1/4 corner common to Sections 6 and 5 and remonumented as shown in detail below.
2. Identified and rewitnessed the section corner on the Township line common to Sections 6 and 5, T. 32 S., R. 2 E, also identified and rewitnessed the section corner on the Township line common to Sections 31 and 32, T. 31 S., R. 2 E and made tie between the two corners as shown on the map accompanying this report.
3. Ran closed transit and tape traverse from section corner $\frac{32}{6|5}$ southerly to 1/4 corner 6/5 and back to point of beginning.
4. Computed the position of the North 1/16 corner on the section line between Sections 6 and 5, T. 32 S., R. 2 E and monumented and referenced as shown below.
5. Marked true line with blazes and aluminum tags stamped "ELK PL."

CORNERS -

1. Rehabilitation of section corner common to Sections 6 and 5, T. 32 S., R. 2 E., W. M.

Found the original monument which is an apparently unmarked stone of record dimensions set on bedrock and surrounded by a small pile of stone. From this monument, the original southeast BT, which is now a 10 inch Douglas fir with open face and exposed scribing, bears $S52^{\circ} E 4.6$ feet. Found no trace of the 4 inch Cedar which was marked as the original Southwest BT, so marked in its place a 6 inch Black Oak which bears $S 63^{\circ} W 22.4$ feet. Also marked a 10 inch Madrone which bears $S 02^{\circ} W 25.3$ feet. Both trees were single blazed and scribed "RS 583 BT".

Distances taken to face of blaze. Compass variation $20^{\circ}00' E$.

2. Rehabilitation of section corner common to Sections 31 and 32, T. 31 S., R. 2 E., W. M.

Found stone of approximately record dimensions with five chisel notches on East side and one notch on West side. Also had "X" chiseled in top. This monument is set firmly in the ground and shows no evidence of ever having been disturbed. From this monument, the original Northeast BT which is now an 18 inch Madrone with open face and scribe markings visible bears $N 52^{\circ} E 28.3$ feet. At record position of Northwest BT found two Madrone trees growing from a common root collar. Found old axe work in both these trees but was unable to recover any scribing. I marked one new BT as