

Survey for Vola Tolman R 2 Box 360A Gold Hill, Oregon.

Located in SE 1/4 of the NE 1/4 S 10, T. 36 S. R 3 W. Jackson County, Ore.

Date May 18, 1964 Bearings from previous survey.

REGISTERED
OREGON
LAND SURVEYOR

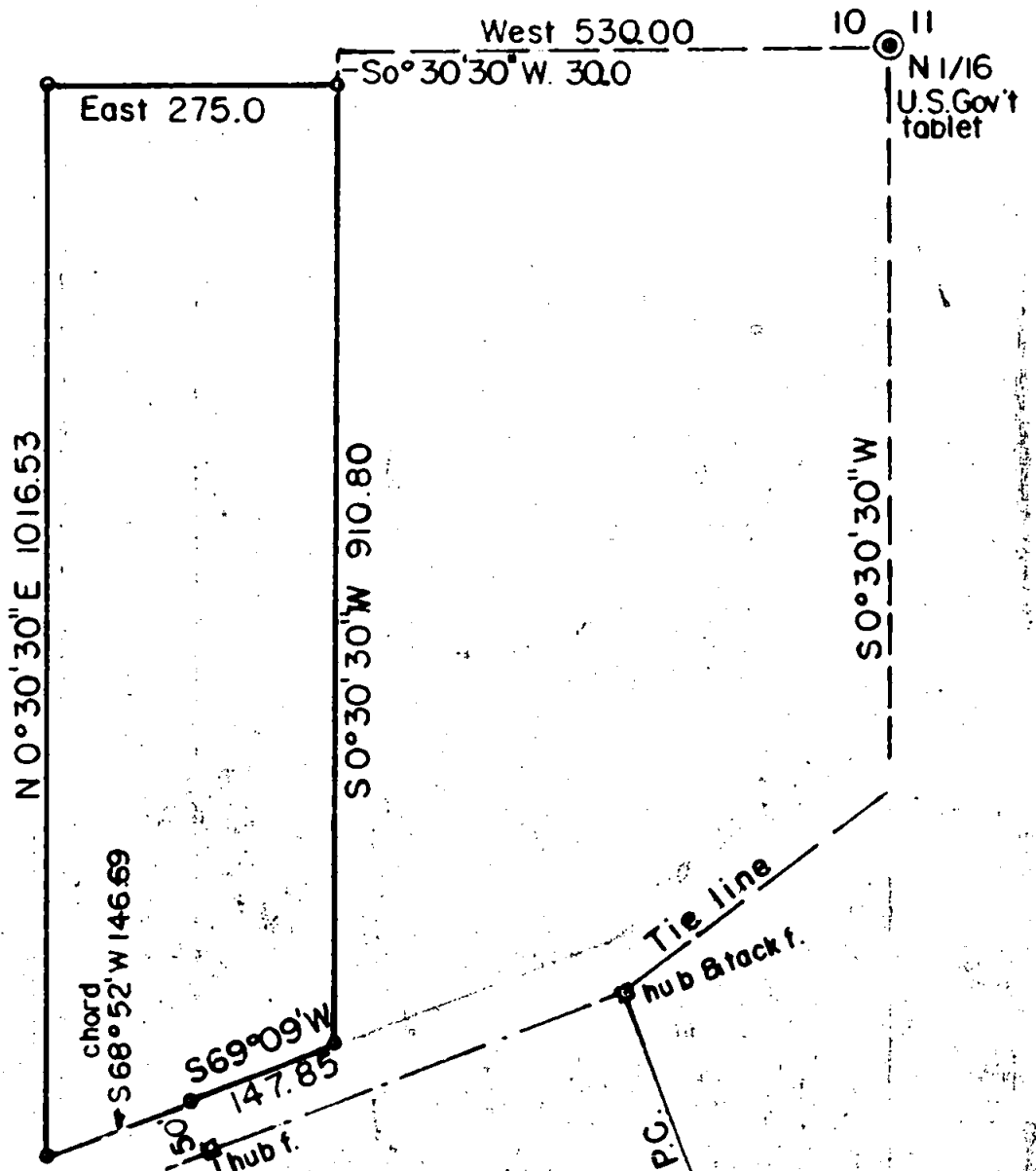
L. N. Dow

MAY 6, 1949
L. N. DOW
251

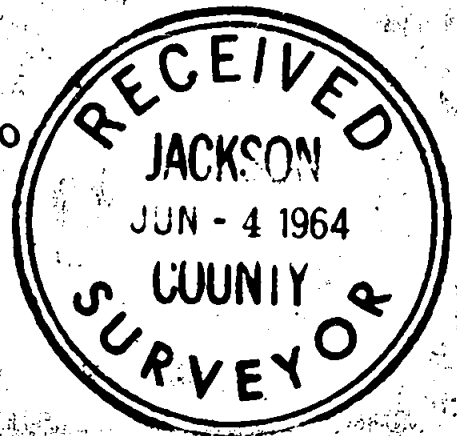


Scale 1" = 200'

5/8" X 30' bars set flush at corners.



HIGHWAY MAP 78-3-4 AUG. 1950



2513

Survey for Vola Tolman R 2 Box 360 A Gold Hill, Oregon.

Date May 18, 1964. Bearings from previous survey.

Located in SE 1/4 of the NE 1/4 S 10, T 36S R 3 W, Jackson County, Ore.

On previous survey had run a traverse line from the N 1/16 corner Section 10 and 11, which point is a brass tablet in a 1 1/2" pipe approximately 8" above ground stamped U.S. Government 1 1/6 corner 1961 Survey. Said traverse line was run to the West. We now picked up the points on this traverse line and set a 5/8" bar at a point West 530 feet and South 30 feet from the above corner. From the information on State Highway Map 7B-3-4 August 1950 we find their centerline hubs with tack for the P.T. of a curve at their Station 114+87.91 and by chaining easterly we find their hub with tack for centerline station 118+93.34 P.C. From the above Highway line we set out 50 feet for the right of way line and set a 5/8" bar opposite the PT at Station 114+87.91. then set up an intersection (approximate) and ran to it from the first 5/8" bar set at the northeast corner and set a 5/8" bar on the right of way line N 69°09'E 147.85 feet from the bar opposite the PT. From the above information and computations we set bars for the corners on the west side of the property being surveyed. All bars 5/8" by 30" flush to the ground.

