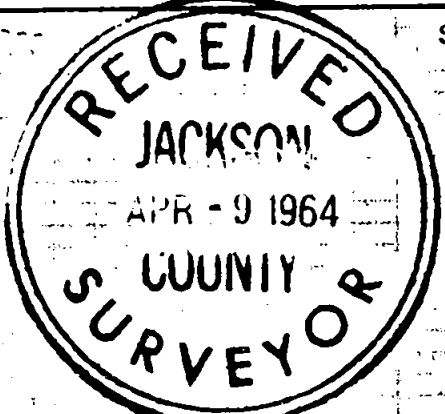
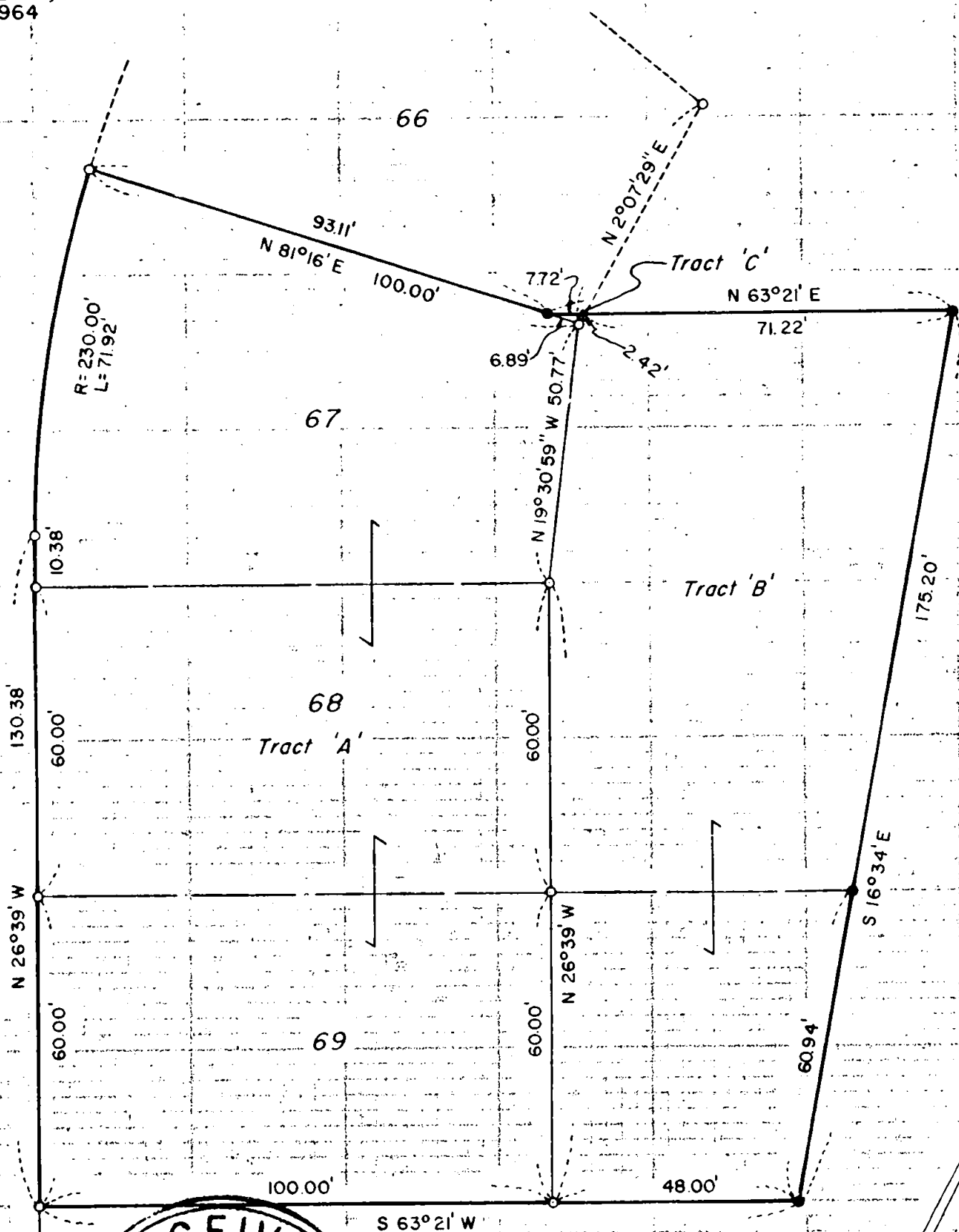
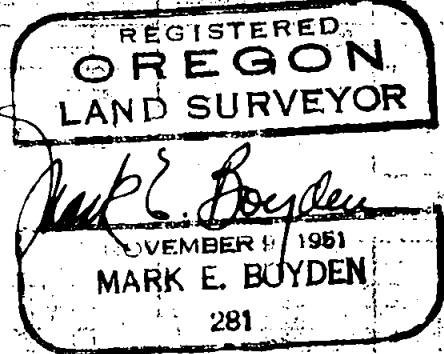


Survey For
OAK KNOLL LAND CORP.
Located in
GREENSPRINGS SUBDIVISION (recorded)
In the NE 1/4 of
Sec. 14, T39S R1E, W.M.
By: Mark E. Boyden
March 2, 1964

TWIN
PINES
CIRCLE



Basis of Bearing:
GREENSPRINGS SUBDIVISION



SCALE: 1" = 30'

- Set 5/8" X 24" iron pin with top flush with ground surface.
- Found 5/8" iron pin original lot corner, with top ± 2" from ground surface.

Survey No. 2467

SURVEY NARRATIVE TO COMPLY WITH O.R.S. 209.250
REVISED BY CHAPTER 555, O.L. 1963

FOR: Oak Knoll Land Corp.
1 King Street
Medford, Oregon

PURPOSE: To monument and describe Tracts 'B' and 'C' lying
adjacent to Lots 67, 68 and 69 GREENSPRINGS SUBDIVISION
(recorded).

PROCEDURE:

Found original subdivision lot corner monuments for control,
setting the new corners for Tracts 'B' and 'C' as shown.

March 2, 1964.

