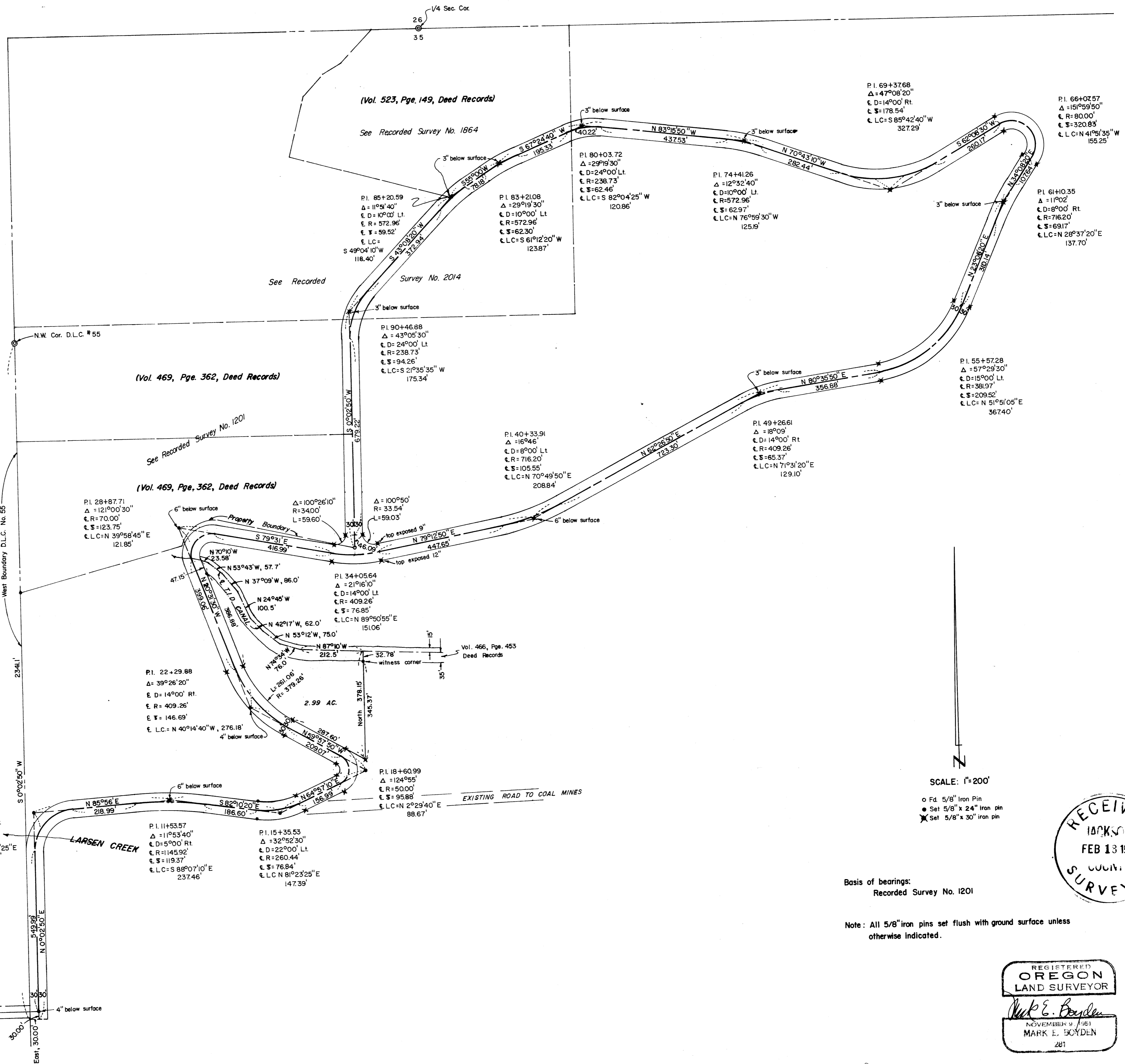


Survey For:  
A.C. PIERCE and OSCAR GYSIN  
Located in  
D.L.C. 55, Sec. 35,  
T37SR1W, W.M.  
By: Mark E. Boyden  
Jan. 29, 1964



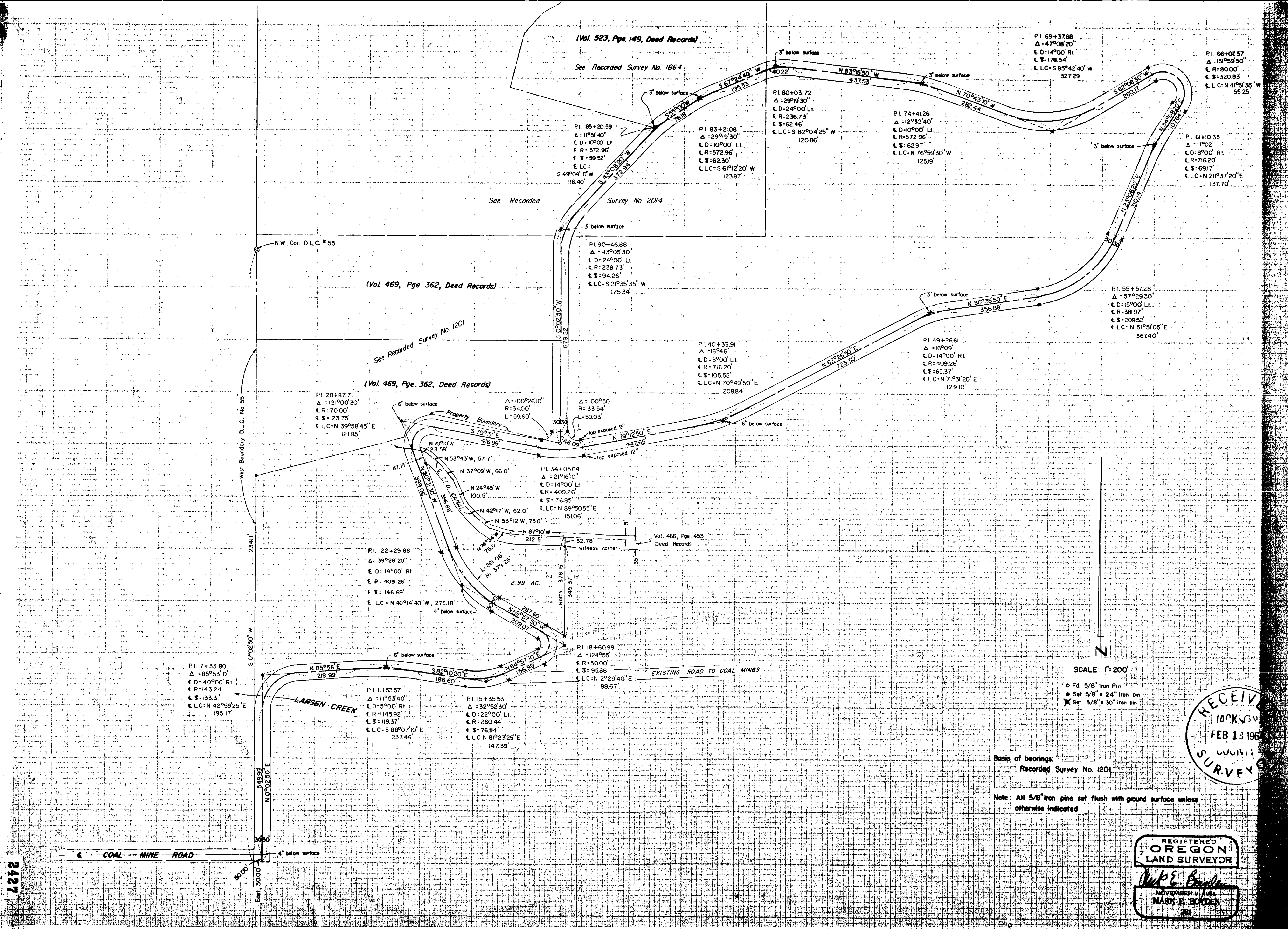
SCALE: 1"=200'

- o Fd. 5/8" Iron Pin
- Set 5/8" x 24" Iron pin
- ✱ Set 5/8" x 30" Iron pin

Basis of bearings:  
Recorded Survey No. 1201

Note: All 5/8" iron pins set flush with ground surface unless otherwise indicated.

REGISTERED  
OREGON  
LAND SURVEYOR  
*Mark E. Boyden*  
NOVEMBER 9 1961  
MARK E. BOYDEN  
281



(Vol. 523, Pgs. 149, Deed Records)

See Recorded Survey No. 1864

P.I. 69+37.68  
 $\Delta = 47^{\circ}08'20''$   
 $\epsilon D = 14^{\circ}00' \text{ Rt}$   
 $\epsilon S = 178.54$   
 $\epsilon LC = S 85^{\circ}42'40'' \text{ W}$   
 327.29

P.I. 66+07.57  
 $\Delta = 151^{\circ}59'50''$   
 $\epsilon R = 80.00'$   
 $\epsilon S = 320.83'$   
 $\epsilon LC = N 41^{\circ}51'35'' \text{ W}$   
 155.25

P.I. 80+03.72  
 $\Delta = 29^{\circ}19'30''$   
 $\epsilon D = 24^{\circ}00' \text{ Lt}$   
 $\epsilon R = 238.73'$   
 $\epsilon S = 62.46'$   
 $\epsilon LC = S 82^{\circ}04'25'' \text{ W}$   
 120.86

P.I. 83+21.08  
 $\Delta = 29^{\circ}19'30''$   
 $\epsilon D = 10^{\circ}00' \text{ Lt}$   
 $\epsilon R = 572.96'$   
 $\epsilon S = 62.30'$   
 $\epsilon LC = S 61^{\circ}12'20'' \text{ W}$   
 123.87

P.I. 74+41.26  
 $\Delta = 12^{\circ}32'40''$   
 $\epsilon D = 10^{\circ}00' \text{ Lt}$   
 $\epsilon R = 572.96'$   
 $\epsilon S = 62.97'$   
 $\epsilon LC = N 76^{\circ}59'30'' \text{ W}$   
 125.19

P.I. 61+03.35  
 $\Delta = 11^{\circ}02'$   
 $\epsilon D = 8^{\circ}00' \text{ Rt}$   
 $\epsilon R = 716.20'$   
 $\epsilon S = 69.17'$   
 $\epsilon LC = N 28^{\circ}37'20'' \text{ E}$   
 137.70

P.I. 90+46.88  
 $\Delta = 43^{\circ}05'30''$   
 $\epsilon D = 24^{\circ}00' \text{ Lt}$   
 $\epsilon R = 238.73'$   
 $\epsilon S = 94.26'$   
 $\epsilon LC = S 21^{\circ}35'35'' \text{ W}$   
 175.34

(Vol. 469, Pgs. 362, Deed Records)

See Recorded Survey No. 1201

P.I. 40+33.91  
 $\Delta = 16^{\circ}46'$   
 $\epsilon D = 8^{\circ}00' \text{ Lt}$   
 $\epsilon R = 716.20'$   
 $\epsilon S = 105.55'$   
 $\epsilon LC = N 70^{\circ}49'50'' \text{ E}$   
 208.84

P.I. 49+26.61  
 $\Delta = 18^{\circ}09'$   
 $\epsilon D = 14^{\circ}00' \text{ Rt}$   
 $\epsilon R = 409.26'$   
 $\epsilon S = 65.37'$   
 $\epsilon LC = N 71^{\circ}31'20'' \text{ E}$   
 129.10

P.I. 55+57.28  
 $\Delta = 57^{\circ}29'30''$   
 $\epsilon D = 15^{\circ}00' \text{ Lt}$   
 $\epsilon R = 381.97'$   
 $\epsilon S = 209.52'$   
 $\epsilon LC = N 51^{\circ}51'05'' \text{ E}$   
 367.40

(Vol. 469, Pgs. 362, Deed Records)

P.I. 28+87.71  
 $\Delta = 121^{\circ}00'30''$   
 $\epsilon R = 70.00'$   
 $\epsilon S = 123.75'$   
 $\epsilon LC = N 39^{\circ}58'45'' \text{ E}$   
 121.85

$\Delta = 100^{\circ}26'10''$   
 $R = 340.0'$   
 $L = 59.60'$

$\Delta = 100^{\circ}50'$   
 $R = 33.54'$   
 $L = 59.03'$

P.I. 34+05.64  
 $\Delta = 21^{\circ}16'10''$   
 $\epsilon D = 14^{\circ}00' \text{ Lt}$   
 $\epsilon R = 409.26'$   
 $\epsilon S = 76.85'$   
 $\epsilon LC = N 89^{\circ}50'55'' \text{ E}$   
 151.06

P.I. 22+29.88  
 $\Delta = 39^{\circ}26'20''$   
 $\epsilon D = 14^{\circ}00' \text{ Rt}$   
 $\epsilon R = 409.26'$   
 $\epsilon S = 146.69'$   
 $\epsilon LC = N 40^{\circ}14'40'' \text{ W}$   
 276.18

P.I. 18+60.99  
 $\Delta = 124^{\circ}55'$   
 $\epsilon R = 50.00'$   
 $\epsilon S = 95.88'$   
 $\epsilon LC = N 2^{\circ}29'40'' \text{ E}$   
 88.67

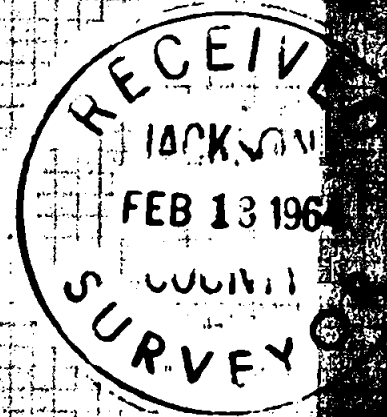
P.I. 11+53.57  
 $\Delta = 11^{\circ}53'40''$   
 $\epsilon D = 5^{\circ}00' \text{ Rt}$   
 $\epsilon R = 1145.92'$   
 $\epsilon S = 119.37'$   
 $\epsilon LC = S 88^{\circ}07'10'' \text{ E}$   
 237.46

P.I. 15+35.53  
 $\Delta = 32^{\circ}52'30''$   
 $\epsilon D = 22^{\circ}00' \text{ Lt}$   
 $\epsilon R = 260.44'$   
 $\epsilon S = 76.84'$   
 $\epsilon LC = N 81^{\circ}23'25'' \text{ E}$   
 147.39

P.I. 7+33.80  
 $\Delta = 85^{\circ}53'10''$   
 $\epsilon D = 40^{\circ}00' \text{ Rt}$   
 $\epsilon R = 143.24'$   
 $\epsilon S = 133.31'$   
 $\epsilon LC = N 42^{\circ}59'25'' \text{ E}$   
 195.17

SCALE: 1"=200'

- o 5/8" Iron Pin
- Set 5/8" x 24" Iron pin
- ✱ Set 5/8" x 30" iron pin



Basis of bearings:  
 Recorded Survey No. 1201

Note: All 5/8" iron pins set flush with ground surface unless otherwise indicated.

REGISTERED  
**OREGON**  
 LAND SURVEYOR  
*Mark E. Boyden*  
 NOVEMBER 4, 1951  
**MARK E. BOYDEN**

2427

Survey No. 2427

SURVEY NARRATIVE TO COMPLY WITH O.R.S. 209.250  
REVISED BY CHAPTER 555, O.L. 1963

FOR: A.C. Pierce  
Pierce Heights  
Medford, Oregon

&

Oscar Gysin  
Coal Mine Road  
Medford, Oregon

PURPOSE: (1) To set control monuments, and prepare a legal description of a proposed roadway to be deeded by the present property owners to Jackson County for public road purposes.  
(2) Monument and prepare a legal description of a 2.99 acre parcel within the Gysin ownership.

PROCEDURE:

Found iron pins and random hubs previously set by this office on Recorded Survey Numbers 1201 and 1864, for meridian and coordinate controls.

Ran preliminary survey of road, monumenting same as shown after approval of the Jackson County Planning Commission.

From said road controls, monumented the 2.99 acre parcel as shown.

February 10, 1964

