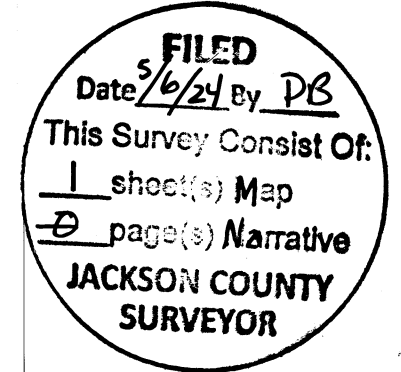


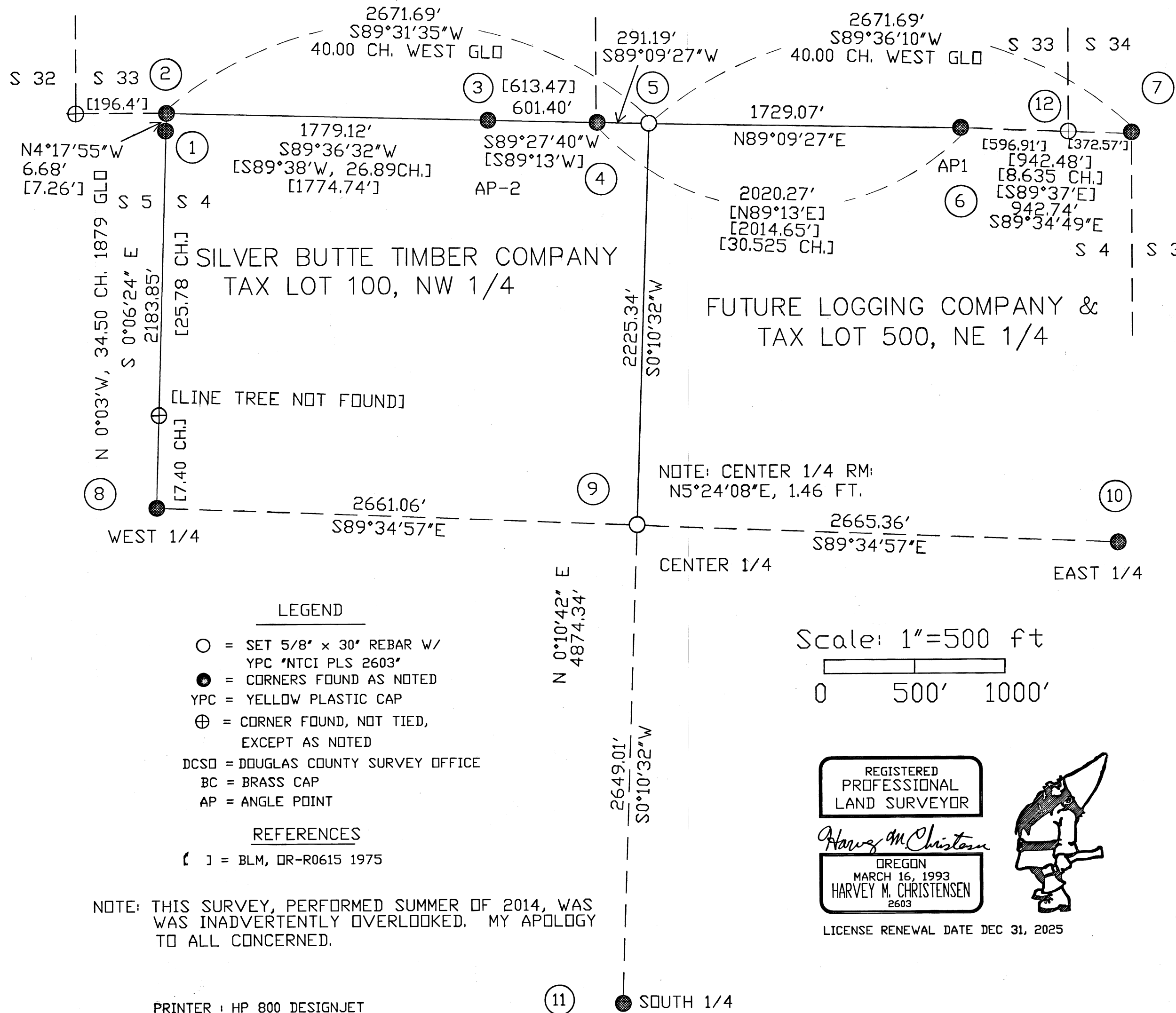
SURVEY FOR FUTURE LOGGING COMPANY & SILVER BUTTE TIMBER COMPANY NORTHEAST 1/4 AND NORTHWEST 1/4 OF SECTION 4, TOWNSHIP 33 SOUTH, RANGE 4 WEST, W.M. DOUGLAS COUNTY, OREGON JACKSON COUNTY, OREGON FEBRUARY 20, 2024

NARRATIVE

THE PURPOSE OF THIS SURVEY WAS TO MONUMENT THE NORTH 1/2 AND MARK THE PROPERTY LINES IN THE SAID NORTH 1/2 OF SECTION 4, T33S, R4W, W.M. FOR FUTURE LOGGING COMPANY & SILVER BUTTE TIMBER COMPANY IN DOUGLAS AND JACKSON COUNTIES, OREGON. THE BASIS OF BEARING FOR THIS SURVEY IS FROM THE GPS CONTROL CIRCUIT USING NGS OPUS SOLUTION SOFTWARE AND THE CALCULATED INVERSE BETWEEN #4 AND #2 BEING TRUE BEARING OF S89°34'17"W 2380.52' NAD 83. ALL CORNERS WERE SET PER THE 2009 BLM MANUAL OF INSTRUCTIONS. THE NORTH 1/4 CORNER OF SECTION 4 WAS CALCULATED AT MID POINT BETWEEN THE CLOSING CORNERS AT THE NW AND NE OF SAID SECTION 4 (#2) AND (#7), THEN MOVED TO THE EAST-WEST LINE BETWEEN AP-1 (#6) AND S 1/4 S 33 (#4) AND ON LINE FROM S 1/4 SEC. 4. 1879 BTS NOT FOUND. THIS SURVEY WAS PERFORMED USING A NIKON NIVO TOTAL STATION TO MEASURE ANGLES AND DISTANCES. THREE TRIMBLE GPS 5700 UNITS WERE USED FOR INITIAL CONTROL OF THE PROJECT. BEARING TREES (BT) REFERENCED ON THIS SURVEY WERE MEASURED WITH A 50' DIAMETER SPENCER TAPE TO THE SIDE CENTER (SPIKED) OF THE TREE AND HAND COMPASS (17° EAST) TO THE CENTER. ALL SCRIBED BT'S ARE NEW BT'S.



NORTH LINE SECTION 4 WEST, 80.00 CH. 1879 GLO 7TH STANDARD PARALLEL



CORNER NOTES

- (1) CLOSING CORNER NORTHWEST SECTION 4 (300700) FOUND: 2.5' DCSO BC .8' ABOVE GRADE, 1961 BTS: 28' W. CEDAR S64°E, 5.3 FT. HEALED FACE 16' W. CEDAR N27°E, 5.3 FT. HEALED FACE
(2) CLOSING CORNER NORTHWEST CORNER SECTION 4 (300700) FOUND: 2.5' BLM BC . ' ABOVE GRADE, 1975 BTS: 19' W. CEDAR S47°E, 14.2 FT. HEALED FACE 16' D. FIR S57°W, 35.1 FT. HEALED FACE
(3) AP-2 CORNER SECTIONS 33/4 (327700) FOUND: 2.5' BLM BC .2' ABOVE GRADE, 1975, OLD PIPE ALONG SIDE BTS: 44' W. CEDAR N65°W, 17.1 FT. HEALED FACE 27' W. CEDAR N82.5°E, 65.3 FT. HEALED FACE FOUND 5.5' STEEL POST .5 FOOT WEST
(4) SOUTH 1/4 CORNER SECTION 33 ONLY (336700) FOUND: 1975 BLM 2.5' BC .3' ABOVE GRADE BTS: 9' D. FIR S64°W, 10.1 FT. BLAZED & SCRIBED 'X' 'BT' 8' D. FIR S38°E, 7.0 FT. ' 'X' 'BT' 9' W. CEDAR N4°W, 6.7 FT. HEALED FACE 9' D. FIR N68°E, 20.1 FT. HEALED FACE
(5) NORTH 1/4 CORNER SECTION 4 ONLY DOUGLAS/JACKSON COUNTY LINE (340700) SET: 5/8" X 30" REBAR W/ YPC 'NTCI PLS 2603' BTS: 9' D. FIR S66°E, 55.8 FT. BLAZED & SCRIBED '1/4 S4 BT' 11' D. FIR S42°W, 12.7 FT. ' 'X' 'BT' 7' W. CEDAR N56°E, 25.7 FT. ' 'X' 'BT' 6' W. CEDAR N53°W, 29.5 FT. ' 'X' 'BT' SET 5.5' STEEL POST .5 FEET NORTH
(6) AP-1 CORNER SECTIONS 33/4 DOUGLAS/JACKSON COUNTYLINE (366700) FOUND: 2.5' BLM BC 1.0' ABOVE GRADE, 1975 BTS: 36' D. FIR N52°E, 15.5 FT. HEALED FACE 18' D. FIR N38°W, 12.5 FT. ' NOTE: NO NEW TREES SCRIBED. FOUND 5.5' STEEL POST .5 FOOT EAST
(7) CLOSING CORNER NORTHEAST CORNER SECTION 4, DOUGLAS/JACKSON COUNTY LINE FOUND: 2.5' BLM BC CC, 0.4' BELOW GRADE IN ROAD, 1975. (400700) BTS: 9' D. FIR, S73°E, 74.5 FT. BLAZED & SCRIBED 'T33S R4W S3 BT' 21' D. FIR, N66°E, 39.4 FT. ' 'X' 'BT' 24' D. FIR, S88.5°W, 13.2 FT. PARTLY HEALED FACE 28' D. FIR, S13°E, 42.2 FT. '
(8) WEST 1/4 CORNER SECTION 4, DOUGLAS/JACKSON COUNTY LINE (300640) FOUND: 2.5' DCSO BC 0.8' ABOVE GRADE, 1970 BTS: 9' CEDAR, S50°E 16.8 FT. HEALED FACE 25' CEDAR N21°E, 36.3 FT. HEALED FACE 28' D. FIR N23°W, 23.1 FT. ' 27' D. FIR S82°W, 23.8 FT. '
(9) CENTER 1/4 CORNER SECTION 4 (340640) SET: RM: 5/8" X 30" REBAR, N5°24'08"E, 1.46 FT. W/YPC 'NTCI PLS 2603' BTS: 10' D. FIR S80°W, 16.4 FT. BLAZED & SCRIBED 'C1/4 S4 BT' 12' D. FIR N74°W, 37.0 FT. ' 7' W. HEM N28°E, 16.5 FT. ' NOTE: BTS TO RM ONLY, NO SUITABLE TREES TO THE SE. SET 5.5' STEEL POST .5 FEET EAST
(10) EAST 1/4 CORNER SECTION 4 (400640) FOUND: 25' HEM. SNAG, SCRIBING VISIBLE FOUND: RM, 2.5' BLM BC 0.5' ABOVE GRADE, N13°W, 3.0 FT. BTS: 9' D. FIR S42°E, 22.1 FT. BLAZED & SCRIBED '1/4 S3 BT' 8' D. FIR N78°W, 19.1 FT. ' '1/4 S4 BT' 11' D. FIR N48.5°E, 54.8 FT. HEALED FACE 13' D. FIR S12.5°W, 10.6 FT. ' SET 5.5' STEEL POST .5 FEET EAST
(11) SOUTH 1/4 CORNER SECTION 4 (340600) FOUND: 2.5' BLM BC 0.2' ABOVE GRADE, 1968 BTS: 42' D. FIR N50°E, 29.4 FT. HEALED FACE 45' D. FIR S40°W, 26.4 FT. ' 18' D. FIR N56°E, 15.2 FT. ' NOTE: NO SUITABLE TREES TO THE NW SET 5.5' STEEL POST .5 FEET EAST
(12) CLOSING CORNER SECTIONS 33 & 34 ONLY, DOUGLAS/JACKSON COUNTY LINE FOUND: 2.5' BLM BC IN MOUND OF STONE, 1975. (374700) BTS: 15' W. HEM S66°E, 27.3 FT. BLAZED & SCRIBED 'X' 'BT' 12' D. FIR S65°W, 19.3 FT. ' 'X' 'BT' 14' W. CEDAR N41.5°E, 49.2 FT. HEALED FACE 7' D. FIR N28°W, 17.5 FT. SCRIBING VISIBLE, DYING

LEGEND: O = SET 5/8" x 30" REBAR W/ YPC 'NTCI PLS 2603' ... REFERENCES: [] = BLM, DR-R0615 1975

Scale: 1"=500 ft 0 500' 1000'

REGISTERED PROFESSIONAL LAND SURVEYOR Harvey M. Christensen OREGON MARCH 16, 1993 HARVEY M. CHRISTENSEN 2603 LICENSE RENEWAL DATE DEC 31, 2025

NOTE: THIS SURVEY, PERFORMED SUMMER OF 2014, WAS WAS INADVERTENTLY OVERLOOKED. MY APOLOGY TO ALL CONCERNED.

PRINTER: HP 800 DESIGNJET CARTRIDGE: HP C4844A MYLAR: 4 MIL INKJET DOUBLE MATTE LOT #: BF7801J

NORTHWEST TIMBERLAND CONSULTING, INC. 37036 HWY 58 - PLEASANT HILL, OR 97455 PHONE OR FAX (541) 461-4076

MAP #33 4W SEC 4, TAX LOT 100(DOUGLAS COUNTY) MAP #33 4W SEC 4, TAX LOT 500 (JACKSON COUNTY)