

SURVEY FOR:
LURLINE, LLC
26929 BELFOUNTAIN RD.
MONROE, OR 97456

SURVEY BY:
L.J. FRIAR & ASSOCIATES, P.C.
CONSULTING LAND SURVEYORS
P.O. BOX 1947
PHOENIX, OREGON 97535
PHONE: (541) 772-2782
LJFRIARANDASSOCIATES@CHARTER.NET

DATE:
DECEMBER 5, 2023

MAP OF SURVEY

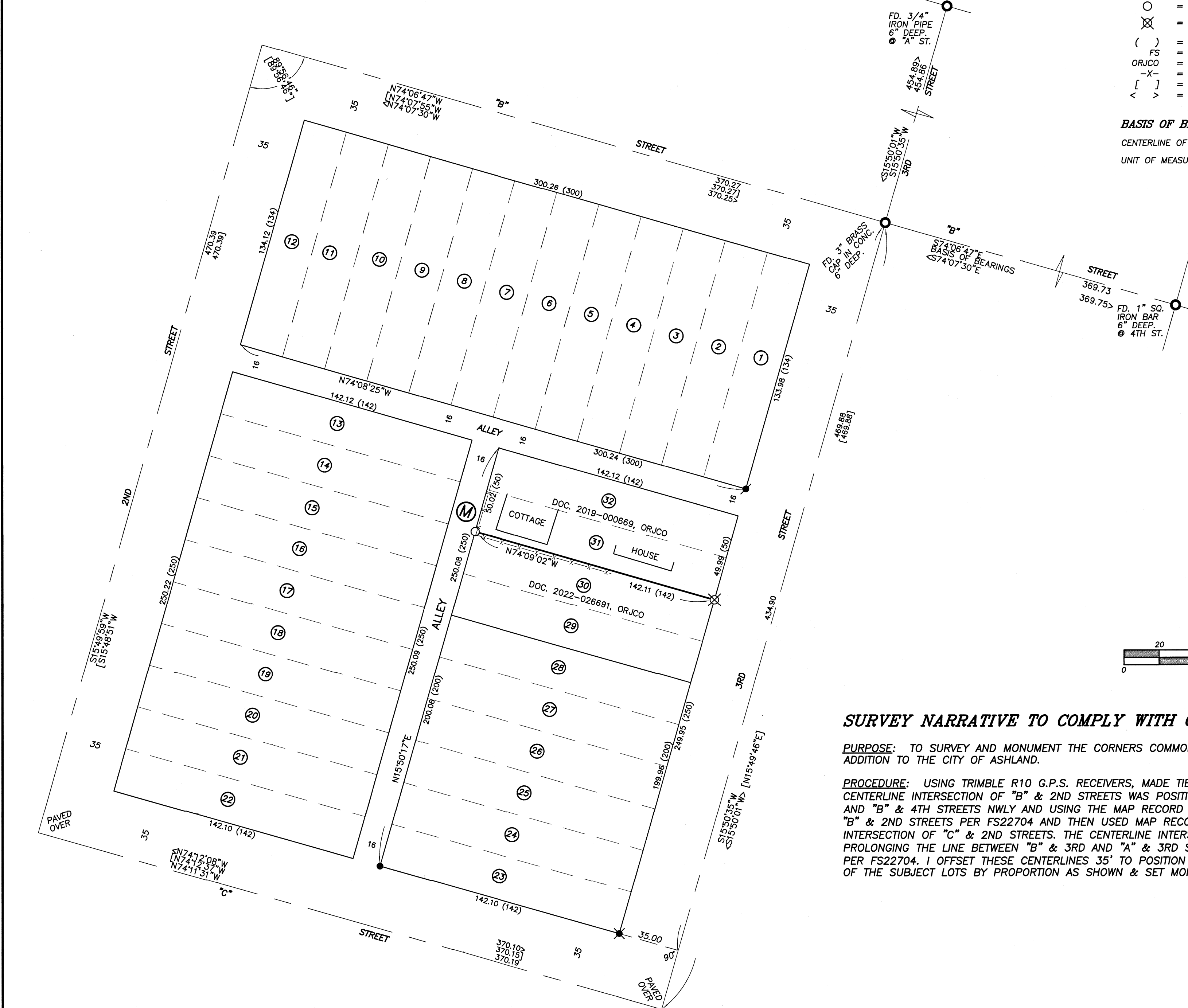
Lot 31, Block "M" RAILROAD ADDITION &
in the N.W. 1/4 of Sec. 9, T.39 S., R.1 E., W.M.
City of Ashland Jackson County, Oregon

LEGEND:

- = FD. MONUMENT IN MONUMENT WELL AS SHOWN FOR STREET INTERSECTION.
- = FOUND 5/8" IRON PIN & PLASTIC CAP MKD. PLS2653 ALSPACH PER FS21865.
- ⊙ = FD. BRASS TAG MKD. PLS2653 IN LEAD PLUG IN SIDEWALK PER FS20989.
- ⊗ = FD. BRASS TAG MKD. PLS2653 IN LEAD PLUG IN SIDEWALK PER FS21865.
- = SET 5/8" X 24" IRON PIN & PLASTIC CAP MKD. L.J.FRIAR & ASSOC.
- ⊗ = SET BRASS TAG MKD. L.J. FRIAR & ASSOC. & MAG NAIL IN SIDEWALK.
- () = RECORD DATA PER RAILROAD ADDITION TO THE TOWN OF ASHLAND PLAT.
- FS = FILED SURVEY #.
- ORJCO = OFFICIAL RECORDS OF JOSEPHINE COUNTY, OREGON.
- X- = FENCE LINE.
- [] = RECORD DATA PER FS22704.
- < > = RECORD DATA PER FS20753.

BASIS OF BEARINGS:

CENTERLINE OF "B" STREET PER FS13071 AS SHOWN HEREON.
UNIT OF MEASUREMENT: FEET SCALE: 1"= 40'



SURVEY NARRATIVE TO COMPLY WITH O.R.S. 209.250

PURPOSE: TO SURVEY AND MONUMENT THE CORNERS COMMON TO LOTS 30 & 31, BLOCK "M" OF THE RAILROAD ADDITION TO THE CITY OF ASHLAND.

PROCEDURE: USING TRIMBLE R10 G.P.S. RECEIVERS, MADE TIES TO MONUMENTS OF RECORD AS SHOWN HEREON. THE CENTERLINE INTERSECTION OF "B" & 2ND STREETS WAS POSITIONED BY PROLONGING THE LINE BETWEEN "B" & 3RD AND "B" & 4TH STREETS NWLY AND USING THE MAP RECORD DISTANCE PER FS22704. HELD MAP RECORD ANGLE AT "B" & 2ND STREETS PER FS22704 AND THEN USED MAP RECORD DISTANCE PER FS22704 TO POSITION THE INTERSECTION OF "C" & 2ND STREETS. THE CENTERLINE INTERSECTION OF "C" & 3RD STREETS WAS POSITIONED BY PROLONGING THE LINE BETWEEN "B" & 3RD AND "A" & 3RD STREETS SWLY AND USING THE MAP RECORD DISTANCE PER FS22704. I OFFSET THESE CENTERLINES 35' TO POSITION THE CORNERS OF BLOCK "M". COMPUTED THE CORNER OF THE SUBJECT LOTS BY PROPORTION AS SHOWN & SET MONUMENTS AS SHOWN HEREON.

REGISTERED PROFESSIONAL LAND SURVEYOR

J. Friar
OREGON
JULY 17, 1986
JAMES E. HIBBS
2234
RENEWAL DATE: 6-30-25

FILED
Date 2/1/24 By PB
This Survey Consists Of:
1 sheet(s) Map
0 page(s) Narrative
JACKSON COUNTY SURVEYOR