

SURVEY FOR:
OLAF & COMPANY
3040 SIGNATURE COURT
MEDFORD, OR 97504

SURVEY BY:
L.J. FRIAR & ASSOCIATES, P.C.
CONSULTING LAND SURVEYORS
PO BOX 1947
PHOENIX, OR 97535
PHONE: (541) 772-2782
LJFRIAR@ASSOCIATES.CHARTER.NET

DATE:
NOVEMBER 14, 2023

MAP OF SURVEY
of Lots 1 & 19 of PARK ROSE SUBDIVISION
Located in the S.E. 1/4 of Sec. 9, T.38S, R.1W, W.M.
City of Phoenix Jackson County, Oregon

LEGEND:

- ⊙ = FD. JACKSON COUNTY SURVEYOR BRASS CAP PER [YEAR] RE'ESTAB'S.
 - △ = FD. 1" COPPER PLUG PER FS22683 OR FS22564.
 - △ = FD. 2" ALUMINUM CAP IN CONCRETE PER FS22683.
 - = FD. IRON PIPE PER FS937. SIZE AS NOTED.
 - = FD. 5/8" IRON PIN & PLASTIC CAP MKD. L.J. FRIAR & ASSOC PER PRS, BOS OR FS23820.
 - ⊗ = FD. 5/8" IRON PIN & PLASTIC CAP MKD. MARQUESS & ASSOC PER FS10031.
 - = FD. 5/8" IRON PIN PER BS.
 - ⊗ = FD. 5/8" IRON PIN & PLASTIC CAP MKD. MINNECI LS2349 PER CLT
 - ⊗ = FD. 5/8" IRON PIN & ALUM. CAP MKD. ODOT RIGHT OF WAY PER FS23791.
 - = SET 5/8" X 24" IRON PIN & PLASTIC CAP MKD. L.J. FRIAR & ASSOC.
 - ⊗ = SET 1" BRASS TAG MKD. L.J. FRIAR & ASSOC. & MAG NAIL IN CONCRETE.
- ORJCO = OFFICIAL RECORDS OF JACKSON COUNTY, OREGON.
() = RECORD DATA PER PRS.
PRS = PARK ROSE SUBDIVISION (FS14457).
FS = FILED SURVEY #.
BOS = BARNUM ORDHARD SUBDIVISION (FS23701).
TFC = TIED PRIOR TO CONSTRUCTION OF NEW BRIDGE.
BS = BARNUM SUBDIVISION.
CLT = CHERYL LANE TOWNHOMES (FS16628).
C1/L1 = SEE COURSE DATA TABLE.
2RM = REFERENCE MONUMENT SET 2.00 FROM TRUE CORNER.
10RM = REFERENCE MONUMENT SET 10.00 FROM TRUE CORNER.
[] = RECORD DATA PER CLT.

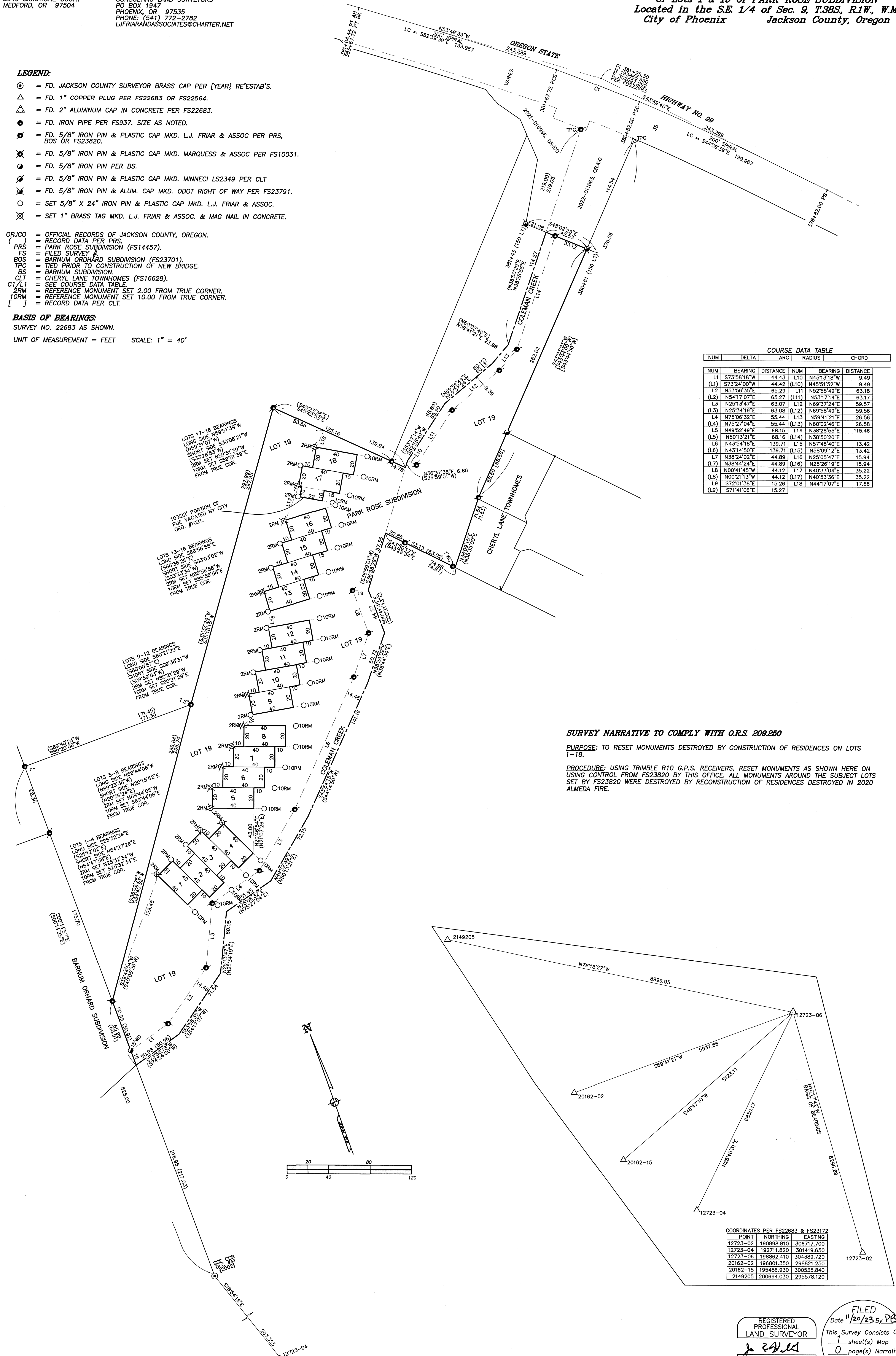
BASIS OF BEARINGS:

SURVEY NO. 22683 AS SHOWN.

UNIT OF MEASUREMENT = FEET SCALE: 1" = 40'

COURSE DATA TABLE

NUM	DELTA	ARC	RADIUS	CHORD	
L1	S73°58'18"W	44.43	L10	N45°13'18"W	9.49
(L1)	S73°24'00"W	44.42	(L10)	N45°51'52"W	9.49
L2	N53°56'35"E	65.29	L11	N52°55'49"E	63.18
(L2)	N54°17'07"E	65.27	(L11)	N53°17'14"E	63.17
L3	N25°13'47"E	63.07	L12	N69°37'24"E	59.57
(L3)	N25°34'19"E	63.08	(L12)	N69°58'49"E	59.56
L4	N75°06'32"E	55.44	L13	N59°41'21"E	26.56
(L4)	N75°27'04"E	55.44	(L13)	N60°02'46"E	26.58
L5	N49°52'49"E	68.15	L14	N38°28'55"E	115.46
(L5)	N50°13'21"E	68.16	(L14)	N38°50'20"E	115.46
L6	N43°54'18"E	139.71	L15	N57°48'40"E	13.42
(L6)	N43°14'50"E	139.71	(L15)	N58°09'12"E	13.42
L7	N38°24'02"E	44.89	L16	N25°05'47"E	15.94
(L7)	N38°44'24"E	44.89	(L16)	N25°26'19"E	15.94
L8	N00°41'45"W	44.12	L17	N40°33'04"E	35.22
(L8)	N00°21'13"W	44.12	(L17)	N40°53'36"E	35.22
L9	S72°01'38"E	15.28	L18	N44°17'07"E	17.65
(L9)	S71°41'06"E	15.27			



SURVEY NARRATIVE TO COMPLY WITH O.R.S. 209.250

PURPOSE: TO RESET MONUMENTS DESTROYED BY CONSTRUCTION OF RESIDENCES ON LOTS 1-18.

PROCEDURE: USING TRIMBLE R10 G.P.S. RECEIVERS, RESET MONUMENTS AS SHOWN HERE ON USING CONTROL FROM FS23820 BY THIS OFFICE. ALL MONUMENTS AROUND THE SUBJECT LOTS SET BY FS23820 WERE DESTROYED BY RECONSTRUCTION OF RESIDENCES DESTROYED IN 2020 ALMEDA FIRE.

COORDINATES PER FS22683 & FS23172

POINT	NORTHING	EASTING
12723-02	190898.810	306717.700
12723-04	192711.820	301419.650
12723-06	198862.410	304389.720
20162-02	196801.350	298821.250
20162-15	195486.930	300535.840
2149205	200694.030	295578.120

REGISTERED PROFESSIONAL LAND SURVEYOR

J. Friar
OREGON
JULY 17, 1986
JAMES E. HIBBS
2234
RENEWAL DATE: 6-30-25

FILED
Date 11/20/23 By PB
This Survey Consists Of:
1 sheet(s) Map
0 page(s) Narrative
JACKSON COUNTY SURVEYOR