

**MAP OF SURVEY**  
**RIGHT-OF-WAY MONUMENTATION**  
 LOCATED IN SECTIONS 32 & 33, T. 36 S. R. 1 W., AND  
 SECTIONS 4 & 5, T. 37 S. R. 1 W., W.M.  
 JACKSON COUNTY, OREGON

FILED  
 Date 6/13/23 by SS  
 This Survey Consist Of:  
 1 sheet(s) Map  
 1 page(s) Narrative  
**JACKSON COUNTY**  
**SURVEYOR**

**CENTERLINE INVERSE TABLE**

POINT NUMBERS	BEARING	DISTANCE
703 - 810	(N 89°49'46" E)	(2651.61')
810 - 916	(N 89°49'40" E)	(2651.43')
916 - 1012	(N 89°50'21" E)	(2641.71')
1012 - 1103	(N 89°50'17" E)	(2641.52')

SCALE: 1" = 500'

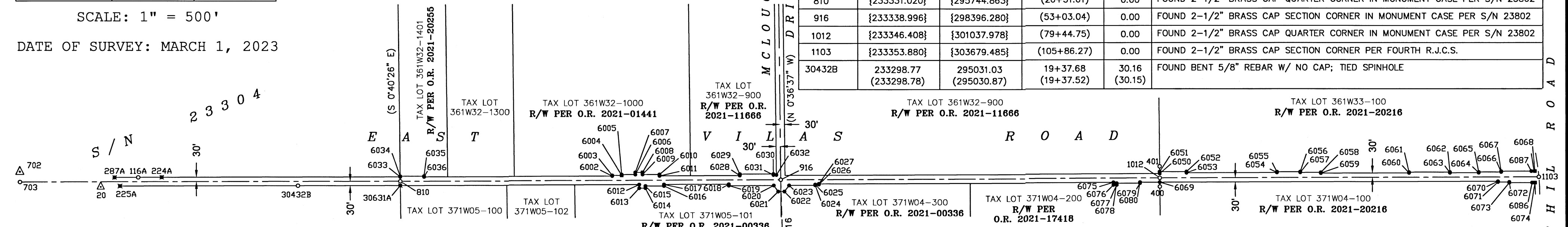
DATE OF SURVEY: MARCH 1, 2023

**RECOVERED MONUMENT & CONTROL TABLE**

POINT NO.	NORTHING	EASTING	STATION	OFFSET	DESCRIPTION
2	{230804.705}	{298467.382}	-	-	FOUND 2" ALUMINUM CAP STAMPED "JACKSON COUNTY SURVEYOR" PER S/N 23063
20	(233291.89)	(293656.21)	-	-	FOUND 1-1/2" ALUMINUM CAP STAMPED "JA CO HORIZ CONTROL" PER S/N 23308
116A	(233355.65)	(293917.39)	(8+24.21)	(-29.98)	FOUND BENT 5/8" REBAR PER S/N 23304; TIED SPINHOLE
400	233286.28	301038.49	79+45.07	60.15	FOUND 5/8" REBAR PER S/N 15998
401	233426.38	301037.32	79+44.31	-79.97	FOUND 5/8" REBAR PER S/N 15998
702	{233395.515}	{293092.630}	-	-	FOUND 2" ALUMINUM CAP STAMPED "JACKSON COUNTY SURVEYOR" PER S/N 23063
703	{233323.254}	{293093.267}	(0+00.00)	0.00	FOUND 3/4" IRON PIN IN MONUMENT CASE PER SECOND R.J.C.S
810	{233331.020}	{295744.863}	(26+51.61)	0.00	FOUND 2-1/2" BRASS CAP QUARTER CORNER IN MONUMENT CASE PER S/N 23802
916	{233338.996}	{298396.280}	(53+03.04)	0.00	FOUND 2-1/2" BRASS CAP SECTION CORNER IN MONUMENT CASE PER S/N 23802
1012	{233346.408}	{301037.978}	(79+44.75)	0.00	FOUND 2-1/2" BRASS CAP QUARTER CORNER IN MONUMENT CASE PER S/N 23802
1103	{233353.880}	{303679.485}	(105+86.27)	0.00	FOUND 2-1/2" BRASS CAP SECTION CORNER PER FOURTH R.J.C.S.
30432B	233298.77 (233298.78)	295031.03 (295030.87)	19+37.68 (19+37.52)	30.16 (30.15)	FOUND BENT 5/8" REBAR W/ NO CAP; TIED SPINHOLE

FOR  
**JACKSON COUNTY ROADS AND PARKS**  
 200 ANTELOPE ROAD, WHITE CITY, OREGON 97505

M C L O U G H L I N D R I V E  
 BETWEEN #2 AND #916  
 S 1°36'25" E 2635.29'



**SET MONUMENT TABLE**

POINT NO.	STATION	OFFSET	DESCRIPTION
224A	(9+88.41)	(-30.20)	RE-SET MONUMENT; SEE LEGEND
225A	(6+97.66)	(29.95)	RE-SET MONUMENT; SEE LEGEND
287A	(6+59.90)	(-29.87)	RE-SET MONUMENT; SEE LEGEND
6002	[41+28.00]	-30.00	SET MONUMENT; SEE LEGEND
6003	[41+28.00]	[-35.00]	SET MONUMENT; SEE LEGEND
6004	[41+95.00]	[-35.00]	CALCULATED POSITION
6005	[41+95.00]	[-40.00]	SET MONUMENT; SEE LEGEND
6006	[42+90.00]	[-40.00]	SET MONUMENT; SEE LEGEND
6007	[42+90.00]	[-55.00]	SET MONUMENT; SEE LEGEND
6008	[43+40.00]	[-55.00]	CALCULATED POSITION
6009	[43+40.00]	[-40.00]	SET MONUMENT; SEE LEGEND
6010	[44+58.00]	[-40.00]	SET MONUMENT; SEE LEGEND
6011	[44+58.00]	[-30.00]	SET MONUMENT; SEE LEGEND
6012	[43+16.50]	30.00	SET MONUMENT; SEE LEGEND
6013	[43+16.50]	[55.00]	SET MONUMENT; SEE LEGEND
6014	[43+59.50]	[55.00]	SET MONUMENT; SEE LEGEND
6015	[43+59.50]	[40.00]	SET MONUMENT; SEE LEGEND
6016	[44+89.00]	[40.00]	SET MONUMENT; SEE LEGEND
6017	[44+89.00]	30.00	SET MONUMENT; SEE LEGEND
6018	[49+41.00]	30.00	SET MONUMENT; SEE LEGEND
6019	[49+41.00]	[40.00]	SET MONUMENT; SEE LEGEND
6020	[52+54.00]	[40.00]	SET MONUMENT; SEE LEGEND
6021	[52+85.50]	[82.00]	SET MONUMENT; SEE LEGEND
6022	[53+28.00]	[82.00]	SET MONUMENT; SEE LEGEND
6023	[53+61.00]	[40.00]	SET MONUMENT; SEE LEGEND
6024	[55+43.00]	[40.00]	SET MONUMENT; SEE LEGEND
6025	[55+43.00]	[35.00]	SET MONUMENT; SEE LEGEND
6026	[55+68.00]	[35.00]	SET MONUMENT; SEE LEGEND
6027	[55+68.00]	30.00	SET MONUMENT; SEE LEGEND
6028	[50+18.00]	-30.00	SET MONUMENT; SEE LEGEND
6029	[50+18.00]	[-40.00]	SET MONUMENT; SEE LEGEND
6030	[52+52.00]	[-40.00]	SET MONUMENT; SEE LEGEND
6031	[52+52.00]	[-33.00]	SET MONUMENT; SEE LEGEND
6032	52+72.78	[-33.00]	SET MONUMENT; SEE LEGEND
6033	26+51.35	-30.00	SET MONUMENT; SEE LEGEND
6034	[26+51.30]	[-35.00]	SET MONUMENT; SEE LEGEND
6035	[28+18.00]	[-35.00]	SET MONUMENT; SEE LEGEND

**SET MONUMENT TABLE**

POINT NO.	STATION	OFFSET	DESCRIPTION
6036	[28+18.00]	-30.00	SET MONUMENT; SEE LEGEND
6050	79+44.57	-30.00	SET MONUMENT; SEE LEGEND
6051	[79+44.50]	[-43.00]	SET MONUMENT; SEE LEGEND
6052	[81+31.50]	[-43.00]	SET MONUMENT; SEE LEGEND
6053	[81+31.50]	[-35.00]	SET MONUMENT; SEE LEGEND
6054	[87+61.50]	[-35.00]	SET MONUMENT; SEE LEGEND
6055	[87+61.50]	[-40.00]	SET MONUMENT; SEE LEGEND
6056	[89+25.00]	[-40.00]	SET MONUMENT; SEE LEGEND
6057	[89+25.00]	[-35.00]	SET MONUMENT; SEE LEGEND
6058	[90+68.00]	[-35.00]	SET MONUMENT; SEE LEGEND
6059	[90+68.00]	[-30.00]	SET MONUMENT; SEE LEGEND
6060	[96+83.00]	[-30.00]	SET MONUMENT; SEE LEGEND
6061	[96+83.00]	[-35.00]	SET MONUMENT; SEE LEGEND
6062	[99+68.00]	[-35.00]	SET MONUMENT; SEE LEGEND
6063	[99+68.00]	[-30.00]	SET MONUMENT; SEE LEGEND
6064	[101+68.00]	[-30.00]	SET MONUMENT; SEE LEGEND
6065	[101+68.00]	[-35.00]	SET MONUMENT; SEE LEGEND
6066	[103+25.00]	[-35.00]	SET MONUMENT; SEE LEGEND
6067	[103+25.00]	[-40.00]	SET MONUMENT; SEE LEGEND
6068	[105+60.00]	[-40.00]	CALCULATED POSITION
6069	79+44.90	[30.00]	SET MONUMENT; SEE LEGEND
6070	[103+02.00]	[30.00]	SET MONUMENT; SEE LEGEND
6071	[103+02.00]	[35.00]	SET MONUMENT; SEE LEGEND
6072	[103+81.00]	[35.00]	SET MONUMENT; SEE LEGEND
6073	[103+81.00]	[40.00]	SET MONUMENT; SEE LEGEND
6074	[105+60.00]	[40.00]	CALCULATED POSITION
6075	[76+21.50]	30.00	SET MONUMENT; SEE LEGEND
6076	[76+21.50]	[48.00]	SET MONUMENT; SEE LEGEND
6077	[76+44.00]	[48.00]	SET MONUMENT; SEE LEGEND
6078	[76+44.00]	[36.00]	SET MONUMENT; SEE LEGEND
6079	[78+07.00]	[36.00]	SET MONUMENT; SEE LEGEND
6080	[78+07.00]	[30.00]	SET MONUMENT; SEE LEGEND
6086	105+40.00	[40.00]	SET WITNESS MONUMENT; SEE LEGEND
6087	105+35.00	[-40.00]	SET WITNESS MONUMENT; SEE LEGEND
30631A	(26+51.65)	(29.79)	RE-SET MONUMENT; SEE LEGEND

**LEGEND**

- FOUND MONUMENT AS NOTED
- △ FOUND CONTROL AS NOTED
- SET 5/8" X 30" REBAR W/ 1-1/2" ALUMINUM CAP STAMPED "MEADE PLS 90707" TO MONUMENT RECENTLY ACQUIRED RIGHT-OF-WAY
- ✱ SET 5/8" X 30" REBAR W/ 1-1/2" ALUMINUM CAP STAMPED "MEADE PLS 90707" TO REPLACE PREVIOUSLY EXISTING MONUMENT AS SHOWN ON S/N 23308
- CALCULATED POSITION; NOTHING FOUND OR SET
- ( ) RECORD SURVEY DATA PER S/N 23308 & AS MEASURED PER THIS SURVEY UNLESS NOTED OTHERWISE (D. MEADE)
- { } RECORD SURVEY DATA PER S/N 23802 OR 23063 & AS MEASURED PER THIS SURVEY (S. FEIN)
- [ ] RECORD DEED DATA PER REFERENCED INSTRUMENT NO. & AS MEASURED PER THIS SURVEY
- S/N SURVEY NUMBER ON FILE WITH THE JACKSON COUNTY SURVEYOR
- O.R. OFFICIAL RECORDS OF THE JACKSON COUNTY CLERK
- R.J.C.S. RE-ESTABLISHMENT BY THE JACKSON COUNTY SURVEYOR

**SURVEY NARRATIVE TO COMPLY WITH O.R.S. 209.250**

**PURPOSE OF SURVEY:**  
 TO MONUMENT RIGHT OF WAY ACQUIRED FOR THE WIDENING AND RECONSTRUCTION OF EAST VILAS ROAD PER THE REQUIREMENTS OF ORS 209.155 AND ORS 368.106, AND TO REPLACE THOSE MONUMENTS RECOVERED IN S/N 23308 THAT WERE REMOVED OR DESTROYED BY SAID CONSTRUCTION PER THE REQUIREMENTS OF ORS 209.150.

**PROCEDURE:**  
 UTILIZING TRIMBLE R8-2 GNSS RECEIVERS, CONTROL POINT #2 PER S/N 23063 WAS OCCUPIED WITH A BASE RECEIVER, AND A ROVING RECEIVER WAS USED TO ESTABLISH PROJECT CONTROL AND VERIFY THE POSITIONS OF SECTION AND QUARTER-SECTION MONUMENTS AS RE-ESTABLISHED BY THE JACKSON COUNTY SURVEYOR'S OFFICE IN S/N 23063 AND S/N 23802. SAID CONTROL WAS THEN OCCUPIED BY A NIKON NPL-322 TOTAL STATION AND UTILIZED TO MONUMENT RIGHT-OF-WAY ACQUISITIONS PER THE FOLLOWING INSTRUMENT NUMBERS:  
 O.R. 2021-00336  
 O.R. 2021-01441  
 O.R. 2021-11666  
 O.R. 2021-17418  
 O.R. 2021-20216  
 O.R. 2021-20255

**STATION & OFFSET LOCATIONS OF NEWLY ESTABLISHED RIGHT-OF-WAY MONUMENTS SHOWN HEREON CORRESPOND TO THOSE CONTAINED WITHIN THE LEGAL DESCRIPTION OF THE APPLICABLE RIGHT-OF-WAY ACQUISITION DEED, EXCEPT AS FOLLOWS:**  
 - THE WEST LINE OF THAT RIGHT-OF-WAY ACQUIRED PER O.R. 2021-20216 WAS DETERMINED BY HOLDING FOUND MONUMENTS PER S/N 15998 (#400 AND #401) AND THE RE-ESTABLISHED QUARTER-CORNER PER S/N 23802 (#1012).  
 - THE WEST LINE OF THAT RIGHT-OF-WAY ACQUIRED PER O.R. 2021-20255 WAS DETERMINED BY HOLDING THE RECORD BEARING OF THE CENTER-SOUTH SIXTEENTH CORNER PER S/N 23308 (#30285).  
 - THE EAST LINE OF THAT RIGHT-OF-WAY ACQUIRED PER O.R. 2021-11666 WAS DETERMINE BY HOLDING THE RECORD WESTERLY RIGHT-OF-WAY LINE OF MCLOUGHLIN DRIVE PER S/N 23308.  
 - WITNESS CORNERS WERE USED TO MONUMENT THE MOST EASTERLY EXTENT OF THAT RIGHT-OF-WAY ACQUIRED PER O.R. 2021-20216, AS MONUMENTATION ON THE RIGHT-OF-WAY OF FOOTHILL ROAD WOULD LIKELY BE DESTROYED BY FUTURE IMPROVEMENTS OF FOOTHILL ROAD SCHEDULED FOR NEXT YEAR.

**CONTROL POINTS #20 AND #702 WERE OCCUPIED BY SAID TOTAL STATION AT THEIR RECORD COORDINATE POSITIONS PER S/N 23308, FROM WHICH MONUMENTS #224A, #225A & #287A WERE RESET AT RECORD COORDINATE POSITIONS**

**S/N 23304 WAS PERFORMED BY FRED FRANTZ AS A MONUMENT REPLACEMENT SURVEY FOLLOWING THE INSTALLATION OF A SANITARY SEWER LINE ADJACENT TO THE NORTHERLY RIGHT-OF-WAY LINE OF EAST VILAS ROAD. GIVEN THAT SAID S/N 23304 WAS INTENDING TO REPLACE THOSE SAME MONUMENTS AS SHOWN ON S/N 23308, THE LOCATIONS AS SHOWN ON SAID S/N 23308 WERE USED TO RESET SAID MONUMENTS #224A AND #287A.**

**ALL MONUMENTS WITHIN THE CONSTRUCTION AREA THAT ARE NOT SHOWN HEREON AS BEING RESET WERE RECOVERED IN SIMILAR CONDITION TO THAT SHOWN ON S/N 23308.**

Assessor's Map No.  
 36 1W 32C 36 1W 32 36 1W 33  
 37 1W 04 37 1W 05

REGISTERED  
 PROFESSIONAL  
 LAND SURVEYOR  
*Dane Meade*  
 OREGON  
 JULY 10, 2018  
 DANE MEADE  
 90707 LS

RENEWS: 12-31-24

**SURVEYED BY:**  
 MEADE SURVEYING, LLC  
 233 NE "B" ST, SUITE 200  
 GRANT'S PASS, OR 97526  
 (541) 244-1871