

MAP OF SURVEY

SURVEY FOR : JUNIPER PROPERTIES, LLC
P.O. BOX 1127 ROSEBURG, OREGON 97470

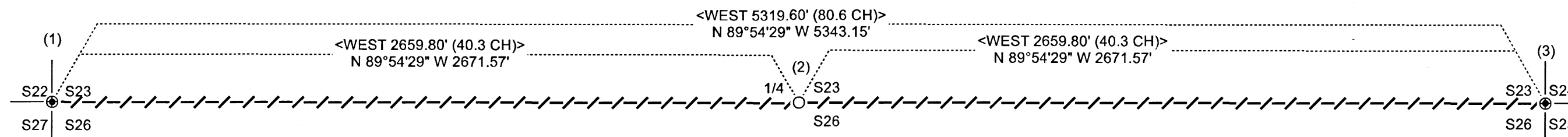
SURVEY BY: LONE ROCK TIMBER MANAGEMENT COMPANY
P.O. BOX 1127 ROSEBURG, OREGON 97470

NORTHWEST 1/4 AND NORTHEAST 1/4 OF SECTION 26, TOWNSHIP 33 SOUTH, RANGE 3 WEST, WILLAMETTE MERIDIAN, JACKON COUNTY, OREGON

DATE: FEBRUARY 2023 TRACT: M3303W26

NARRATIVE:

THE PURPOSE OF THIS SURVEY IS TO MARK THE PROPERTY LINE FOR THE NORTH LINE OF THE JUNIPER PROPERTIES LLC. PROPERTY IN SECTION 26 OF TOWNSHIP 33 SOUTH RANGE 3 WEST W.M. FOR TIMBER MANAGEMENT PURPOSES. WE BEGAN THIS SURVEY BY LOCATING THE NORTHWEST SECTION CORNER (CORNER 1) OF SECTION 26 AND SEARCHED FOR EVIDENCE OF THE QUARTER CORNER (CORNER 2) OF SECTIONS 23 AND 26. WE SEARCHED FOR AND DID NOT FIND EVIDENCE OF THE ORIGINAL CORNER AND OPENED SEVERAL SUSPECTED BEARING TREES AND FOUND NO EVIDENCE. WE THEN PERFORMED A GPS CONTROL SURVEY AT THE NORTHWEST SECTION CORNER (CORNER 1) OF SECTION 26 AND NEAR THE NORTHEAST SECTION CORNER (CORNER 3) OF SECTION 26. WE THEN RAN A RANDOM CLOSED LOOP TRAVERSE UTILIZING GPS FOR BASIS OF BEARING. WE RAN THIS TRAVERSE FROM THE NORTHWEST SECTION CORNER (CORNER 1) OF 26 TO THE NORTHEAST SECTION CORNER (CORNER 3) OF SECTION 26 AND CLOSED BACK TO THE NORTHWEST SECTION CORNER (CORNER 1) OF SECTION 26. WE THEN PROPERLY PROPORTIONED AND SET THE QUARTER CORNER (CORNER 2) BETWEEN SECTIONS 23 AND 26. THE GLO SURVEY RECORD TOPOGRAPHIC CALL TO THE RAVINE EAST OF THE QUARTER CORNER (CORNER 2) FIT VERY WELL WITH OUR PROPORTIONED POSITION. WE SUSPECT A LOGGING SKID TRAIL WAS CONSTRUCTED OVER THE ORIGINAL CORNER POSITION DESTROYING ALL EVIDENCE OF THE CORNER AND ACCESSORIES AT THAT TIME. PROPERTY LINES SHOWN HEREON AS MARKED WERE QUARTER BLAZED AND PAINTED WITH RED PAINT; RED PROPERTY LINE RIBBON AND FLORESCENT BLUE RIBBON WERE PLACED ON TRUE PROPERTY LINE AND ALUMINUM PROPERTY LINES TAGS WERE PLACED AT INTERVALS ALONG THE LINE. BEARING TREES WERE SCRIBED AT ROOT CROWN WITH DISTANCES MEASURED TO ALUMINUM NAIL AT SIDE CENTER AND BEARINGS WERE COMPUTED BY TURNING HORIZONTAL ANGLES FROM TRAVERSE CONTROL POINTS TO AN ALUMINUM NAIL AT FACE CENTER. THIS SURVEY WAS CONDUCTED USING A TRIMBLE C5 TOTAL STATION, TRIMBLE R10 AND TRIMBLE R12I GPS RECEIVERS WITH BRETT RAGON, IGNACIO ROMAN, TREVOR CLEMO, AND WESTON ADDINGTON ASSISTING ME.

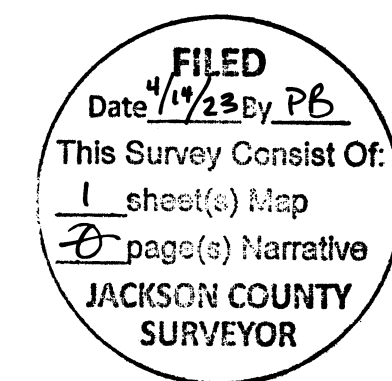


CORNER INFORMATION

1) SECTION CORNER OF SECTION 22, 23, 26 AND 27 (GCDB 500300)
FOUND 1965 BLM BRASS CAP AND IRON PIPE MARKED T33S R3W S22, S23, S26, S27 AS PER BLM LINE NOTES 2018
CORNER IS 0.83' ABOVE MOUND OF STONE ON STEEP NORTH FACING SLOPE ON SOUTH EDGE OF RECENT CLEARCUT
--FOUND 9" DOUGLAS-FIR AT RECORD BEARING AND DISTANCE [RECORD N35 1/2°E 10.2' BLM 2018] WITH WELL HEALED FACE AND BLM TAG
--FOUND 20" DOUGLAS FIR AT RECORD BEARING AND DISTANCE [RECORD N29 1/4°W 19.1' BLM 2018]
--FOUND 10'X8'X6' BASALT STONE AT RECORD BEARING AND DISTANCE [RECORD S72°E 18.8' BLM 2018] WITH BXO MARKING ON NORTHWEST FACE
--FOUND 8'X8'X8' BASALT STONE AT RECORD BEARING AND DISTANCE [RECORD S11°W 8.3' BLM 2018] WITH BXO MARKING ON NORTHEAST FACE

2) QUARTER CORNER BETWEEN SECTION 23 AND 26 (GCDB 540300)
WE SET 5/8"X40" IRON ROD WITH 2 1/2" ALUMINUM CAP MARKED LONE ROCK TIMBER T33S R03W 1/4 S23 S26 85006PLS 2023
THE CORNER IS .03' ABOVE GROUND AND LIES ON STEEP SOUTH FACING SLOPE. WE SET GALVANIZED STEEL POST 1' NORTH OF THE CORNER
CORNER LIES APPROXIMATELY 66 FEET WEST OF CENTER OF RAVINE BEARING SOUTHWEST ON THE NORTH EDGE OF A LOGGING SKID TRAIL
--NEW 10" DOUGLAS-FIR BEARS S17 1/4°W 15.2' WITH TAG AND SCRIBED 1/4 S26 BT
--NEW 12" DOUGLAS-FIR BEARS S45°E 23.1' WITH TAG AND SCRIBED X S26 BT
--NEW 26" DOUGLAS-FIR BEARS N11 3/4°W 13.0' WITH TAG AND SCRIBED 1/4 S23 BT
--NEW 35" DOUGLAS-FIR BEARS N63 1/4°E 60.6' WITH TAG AND SCRIBED X S23 BT

3) SECTION CORNER OF SECTIONS 23, 24, 25, AND 26 (GCDB 600300)
FOUND 1958 BLM BRASS CAP AND IRON PIPE 3' BELOW GROUND DUE TO PREVIOUS ROAD CONSTRUCTION.
WE UNCOVERED THE CORNER AND FOUND IT IN GOOD CONDITION BUT CAP IS UNREADABLE. CORNER LIES AT NORTH EDGE OF FILL MATERIAL OF OLD ROAD GRADE AS PER HOFFINE RE-ESTABLISHMENT NOTE 2011 JCSO FILE NUMBER 20862
--FOUND 33" DOUGLAS-FIR SNAG BEARS N66 1/2°E 17.2' [RECORD N66°E 17.1' HOFFINE 2011] VISIBLE "X" AND B.T. TAG
--FOUND 13" DOUGLAS-FIR BEARS N16°E 18.4' [RECORD N15 3/4°E 18.3' HOFFINE 2011] WITH WELL HEALED FACE AND TAG
--FOUND 10" DOUGLAS-FIR BEARS N85 1/2°W 18.0' [RECORD N86 3/4°W 18.0' HOFFINE 2011] WITH TAG
--NEW 14" DOUGLAS-FIR BEARS S64 3/4°W 17.7' WITH TAG AND WE SCRIBE S26 BT
--FOUND ROTTEN DOUGLAS-FIR STUMP BEARS S63 3/4°W 19.2' [RECORD S73 1/2°W 19.15' HOFFINE 2011] NO VISIBLE FACE OR TAG
--FOUND 12" DOUGLAS-FIR BEARS S7 3/4°E 46.3' [RECORD S8 1/2°E 46.4' HOFFINE 2011] WITH WELL HEALED FACE AND BLM TAG
--FOUND STEEL POST 0.2' NORTH OF CORNER



LEGEND	
○	SET 5/8" X 40" IRON ROD WITH 2 1/2" ALUMINUM CAP MARKED LONE ROCK TIMBER 1/4 S23 S26 2023 85006PLS
⊕	FOUND BLM BRASS CAP AS NOTED
- - - - -	LINES SURVEYED, BLAZED, PAINTED, RIBBONED AND TAGGED
< >	RECORD AS PER GLO SURVEY BY RUFUS MOORE COMPLETED 1885
[]	RECORD AS PER BLM SURVEY BY LUNDEEN COMPLETED 2018
{ }	RECORD PER 2011 HOFFINE CORNER RESTORATION JCSO FILED SURVEY NUMBER 20862

REGISTERED PROFESSIONAL LAND SURVEYOR
Daniel E. Saily
OREGON
NOVEMBER 10, 2020
DANIEL E. SAILY
85006
EXPIRES: 6/30/2024

