

NARRATIVE (in accordance with ORS 209.250)

DATE  
November 2022

PURPOSE:  
The purpose of this survey is to comply with ORS 209.140 by providing geodetic survey control data and reference points for Public Land Survey System (P.L.S.S.) survey monuments along East Vilas Road between State Highway No. 62 and Foothill Road which may be disturbed or destroyed by future road improvement projects and replacing those monuments that have been destroyed by the current (2022) road improvement project.

PROCEDURE:  
Utilizing geodetic control data established on Filed Survey No. 23063 by this office, static GPS positioning of the shown primary GPS control points was performed using Trimble R8 receivers and holding points 1 and 902 as GPS base stations and control and performing fully constrained network adjustments to baselines collected on shown primary GPS control points.

Using this primary control the destroyed P.L.S.S. corners were replaced and the found and set reference points were then positioned using a Trimble S6 total station as shown in the details on sheet 2. All data was collected using a Trimble TSC5 data collector and processing was performed with Trimble Business Center version 5.60 software.

HORIZONTAL DATUM  
OCRS Grants Pass-Ashland Zone (See OAR 734-005-00015)  
NAD 83 (2011) (EPOCH: 2010)  
Units = International Feet

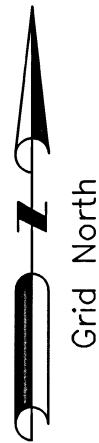
VERTICAL DATUM  
NAVD 88 (Geoid 12A CONUS)  
(Elevations shown are GPS derived orthometric heights)

BASIS OF BEARINGS:  
Grid North (Meridian convergence angle = 0°20'07" at point #2)

# Monument Recovery and Replacement Survey

## P.L.S.S. Corners on East Vilas Rd between Hwy 62 and Foothill Rd

Located in: SE 1/4 of Section 31, T36S R1W, W.M.  
NE 1/4 of Section 6, T37S R1W, W.M.  
SW 1/4 of Section 32, T36S R1W, W.M.  
SE 1/4 of Section 32, T36S R1W, W.M.  
NW 1/4 of Section 5, T37S R1W, W.M.  
NE 1/4 of Section 5, T37S R1W, W.M.  
SW 1/4 of Section 33, T36S R1W, W.M.  
SE 1/4 of Section 33, T36S R1W, W.M.  
NW 1/4 of Section 4, T37S R1W, W.M.  
NE 1/4 of Section 4, T37S R1W, W.M.  
SW 1/4 of Section 34, T36S R1W, W.M.  
NW 1/4 of Section 3, T37S R1W, W.M.  
Jackson County, Oregon



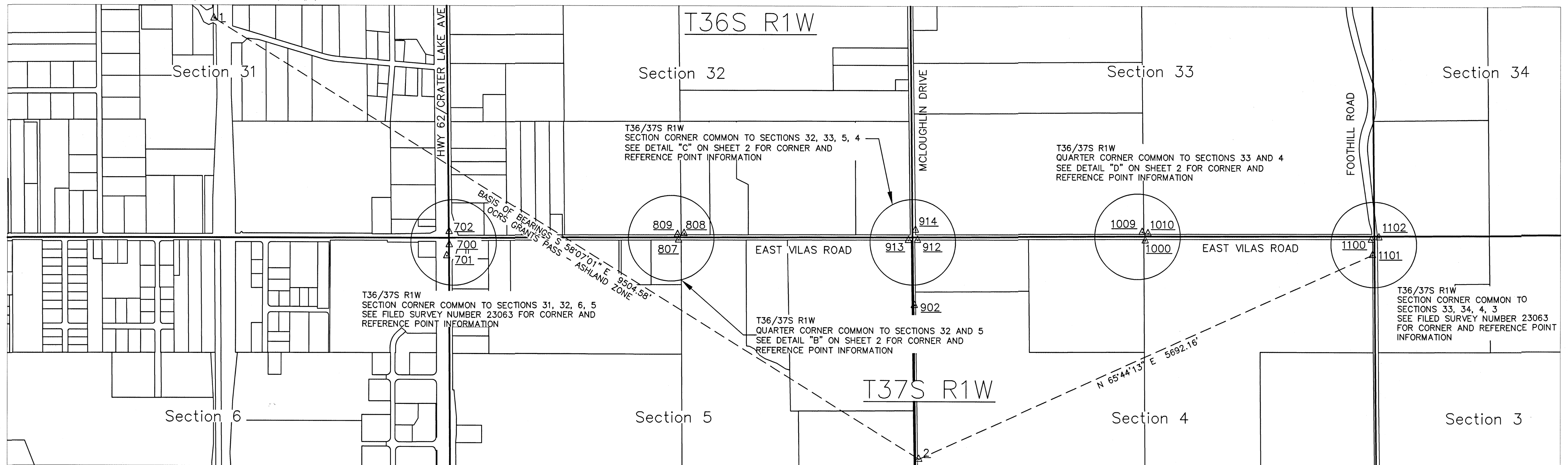
Scale: 1"=800'

FILED  
Date 1/13/23 By SS  
This survey consists of:  
2 sheet(s) Map  
0 page(s) Narrative  
JACKSON COUNTY SURVEYOR

- LEGEND**
- △ = PRIMARY GPS CONTROL POINTS - FOUND OR SET MONUMENT AS NOTED IN TABLE
  - ORGN = OREGON REAL-TIME GPS NETWORK
  - CORS = CONTINUOUSLY OPERATING REFERENCE STATION
  - OCRS = OREGON COORDINATE REFERENCE SYSTEM
  - ORS = OREGON REVISED STATUTES
  - ACAP = ALUMINUM CAP
  - O.S.H.D. = OREGON STATE HIGHWAY DEPARTMENT
  - OAR = OREGON ADMINISTRATIVE RULES
  - FND = FOUND
  - \*XX\* = CONTROL POINT PREVIOUSLY ESTABLISHED AND UTILIZED PER FILED SURVEY NO. 23063 AND FOUND THIS SURVEY

Survey For:  
Jackson County Surveyors Office  
10 S. Oakdale Ave  
Medford, OR 97501

REGISTERED  
PROFESSIONAL  
LAND SURVEYOR  
*Scott D. Fein*  
OREGON  
NOVEMBER 10, 2010  
SCOTT D. FEIN  
83181  
Expires 12/31/2023



PRIMARY STATIC GPS CONTROL POINT INFORMATION

PT. #	NAD 83 (2011) (EPOCH: 2010)			OCRS GRANTS PASS - ASHLAND				95% CONFIDENCE REGIONS			
	LATITUDE	LONGITUDE	HEIGHT	NORTHING	EASTING	ELEVATION	DESCRIPTION	SEMI-MAJ.	SEMI-MIN.	ORIENT.	HEIGHT
*1*	N 42°23'46.12163"	W 122°51'56.13968"	1209.81	235824.916	290396.787	1289.58	FND 2 INS. DIAMETER ACAP MARKED "ODOT CONTROL MARKER 10838-56", FLUSH IN AC	0.012	0.012	2°	0.010
*2*	N 42°22'56.08212"	W 122°50'08.98277"	1297.02	230804.705	298467.382	1376.69	SET 5/8 X 24 INS. REBAR WITH 2 INS. DIAMETER ACAP MARKED "JACKSON COUNTY SURVEYOR"	0.011	0.011	179°	0.012
*3*	N 42°22'36.08474"	W 122°53'38.19500"	1217.11	228693.680	282775.324	1296.85	ORGN CORS STA. "CTPT"	-	-	-	-
*4*	N 42°10'50.47300"	W 122°40'12.55241"	1998.51	157652.584	343804.873	2076.56	ORGN CORS STA. "ASHL"	-	-	-	-
*5*	N 42°19'18.49433"	W 122°52'39.71393"	1378.75	208713.359	287272.196	1458.19	JACKSON COUNTY SURVEYOR CORS STA. "NETRS"	-	-	-	-
*700*	N 42°23'20.49132"	W 122°51'20.37862"	1228.63	233245.091	293094.844	1308.37	SET 5/8 X 24 INS. REBAR WITH 2 INS. DIAMETER ACAP MARKED "JACKSON COUNTY SURVEYOR"	0.006	0.006	1°	0.007
*701*	N 42°23'19.25635"	W 122°51'20.77207"	1232.64	233119.901	293066.018	1312.38	SET 1 IN. DIAMETER BRASS DISC MARKED "CS", FLUSH IN CONCRETE PAD	0.007	0.007	12°	0.007
*702*	N 42°23'21.97724"	W 122°51'20.39684"	1229.16	233395.515	293092.630	1308.91	SET 5/8 X 24 INS. REBAR WITH 2 INS. DIAMETER ACAP MARKED "JACKSON COUNTY SURVEYOR"	0.007	0.007	170°	0.008
*800*	N 42°23'21.48899"	W 122°50'45.06377"	1246.51	233361.143	295744.552	1326.23	(NOW DESTROYED BY ROAD CONSTRUCTION - SEE FILED SURVEY NO. 23063)	0.007	0.007	159°	0.009
*801*	N 42°23'21.03049"	W 122°50'46.27906"	1247.93	233314.202	295653.614	1327.65	(NOW DESTROYED BY ROAD CONSTRUCTION - SEE FILED SURVEY NO. 23063)	0.007	0.007	161°	0.008
*806*	N 42°23'21.41965"	W 122°50'48.13871"	1248.64	233352.801	295513.827	1328.36	(NOW DESTROYED BY ROAD CONSTRUCTION - SEE FILED SURVEY NO. 23063)	0.019	0.019	174°	0.023
807	N 42°23'20.90357"	W 122°50'45.43115"	1248.15	233301.718	295717.321	1327.87	SET 5/8 X 24 INS. REBAR WITH 2 INS. DIAMETER ACAP MARKED "JACKSON COUNTY SURVEYOR"	0.005	0.005	7°	0.004
808	N 42°23'21.62772"	W 122°50'44.59657"	1246.11	233375.388	295779.534	1325.83	SET 5/8 X 24 INS. REBAR WITH 2 INS. DIAMETER ACAP MARKED "JACKSON COUNTY SURVEYOR"	0.005	0.005	179°	0.004
809	N 42°23'21.52005"	W 122°50'45.58561"	1246.34	233364.062	295705.372	1326.06	SET 5/8 X 24 INS. REBAR WITH 2 INS. DIAMETER ACAP MARKED "JACKSON COUNTY SURVEYOR"	0.005	0.005	15°	0.004
*900*	N 42°23'20.84826"	W 122°50'09.17322"	1266.11	233311.885	298438.413	1345.80	(NOW DESTROYED BY ROAD CONSTRUCTION - SEE FILED SURVEY NO. 23063)	0.014	0.013	8°	0.016
*901*	N 42°23'20.51268"	W 122°50'09.14035"	1264.98	233277.486	298366.031	1344.67	(NOW DESTROYED BY ROAD CONSTRUCTION - SEE FILED SURVEY NO. 23063)	0.008	0.007	174°	0.009
*902*	N 42°23'13.44094"	W 122°50'09.55388"	1269.74	232561.818	298414.234	1349.43	SET 5/8 X 24 INS. REBAR WITH 2 INS. DIAMETER ACAP MARKED "JACKSON COUNTY SURVEYOR"	0.007	0.007	179°	0.008
912	N 42°23'20.80026"	W 122°50'09.01759"	1266.17	233307.094	298450.121	1345.86	SET 1 IN. DIAMETER BRASS CAP, FLUSH IN TOP OF CONCRETE CULVERT END	0.005	0.005	171°	0.004
913	N 42°23'20.79231"	W 122°50'10.40190"	1264.97	233305.681	298346.237	1344.66	SET 1 IN. DIAMETER BRASS CAP, FLUSH IN TOP OF CONCRETE CULVERT END	0.006	0.005	175°	0.005
914	N 42°23'21.93991"	W 122°50'09.32325"	1266.08	233422.337	298426.501	1345.77	FND 5/8 IN. REBAR WITH ALUMINUM CAP (CP #909 PER FILED SURVEY NUMBER 23063)	0.006	0.005	164°	0.005
*1000*	N 42°23'20.59573"	W 122°49'34.29959"	1295.46	233301.788	301055.738	1375.12	SET 5/8 X 24 INS. REBAR WITH 2 INS. DIAMETER ACAP MARKED "JACKSON COUNTY SURVEYOR"	0.013	0.012	8°	0.012
*1001*	N 42°23'21.54543"	W 122°49'34.75676"	1291.74	233397.728	301020.855	1371.40	(DISTURBED BY ROAD CONSTRUCTION AND RE-POSITIONED PER THIS SURVEY - SEE PT #1010)	0.012	0.011	176°	0.009
*1002*	N 42°23'21.71932"	W 122°49'38.67884"	1288.51	233413.578	300726.409	1368.18	(NOW DESTROYED BY ROAD CONSTRUCTION)	0.014	0.012	167°	0.012
1009	N 42°23'21.40290"	W 122°49'33.87944"	1292.26	233383.692	301086.782	1371.91	FND 5/8 IN. REBAR WITH ALUMINUM CAP (PER FILED SURVEY NUMBER 23063), LEANING	0.006	0.006	11°	0.005
1010	N 42°23'21.54626"	W 122°49'34.75811"	1291.85	233397.811	301020.753	1371.50	FND 5/8 IN. REBAR WITH ALUMINUM CAP (PER FILED SURVEY NUMBER 23063), LEANING	0.006	0.006	15°	0.004
*1100*	N 42°23'20.60630"	W 122°48'59.81464"	1358.47	233318.447	303643.737	1438.08	SET 5/8 X 24 INS. REBAR WITH 2 INS. DIAMETER ACAP MARKED "JACKSON COUNTY SURVEYOR"	0.015	0.014	157°	0.021
*1101*	N 42°23'18.88006"	W 122°48'59.65545"	1355.77	233143.759	303656.747	1435.38	SET 5/8 X 24 INS. REBAR WITH 2 INS. DIAMETER ACAP MARKED "JACKSON COUNTY SURVEYOR"	0.012	0.012	154°	0.012
*1102*	N 42°23'20.86435"	W 122°48'58.66805"	1364.04	233345.095	303729.627	1443.65	SET 5/8 X 24 INS. REBAR WITH 2 INS. DIAMETER ACAP MARKED "JACKSON COUNTY SURVEYOR"	0.014	0.013	8°	0.010

- ASSESSOR MAPS
- 36 1W 31D
  - 36 1W 32C
  - 36 1W 32D
  - 36 1W 33
  - 36 1W 34
  - 37 1W 06
  - 37 1W 05
  - 37 1W 04
  - 37 1W 03

Jackson County Surveyor  
Scott Fein, PLS, CWRE  
10 S. Oakdale Ave., Medford, OR 97501 (541) 774-6191

Field work was performed: November 2022  
Reviewed By: SDF 1/10/2023

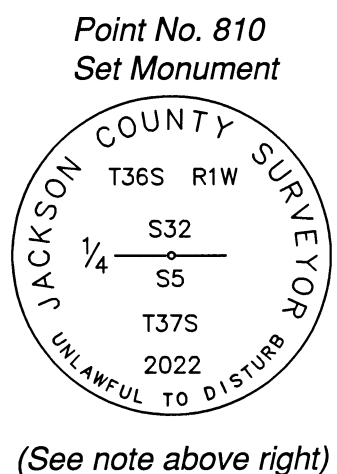
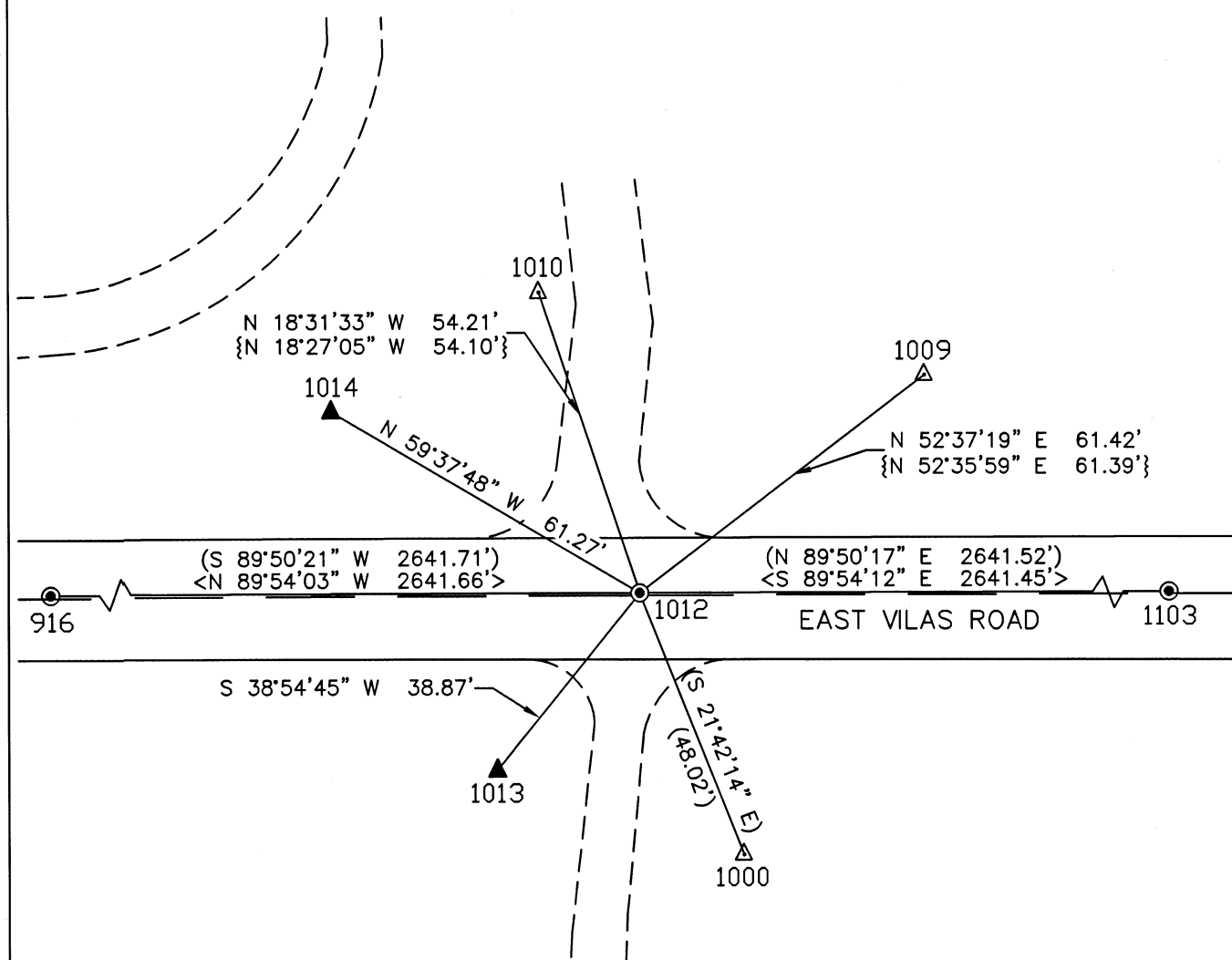
Field Crew: OR, JH  
CS Job File: N.A.

Drawn By: OR 11/23/22  
Approved: SDF 1/10/2023

sv-base vilas rd mos.DWG SHEET 1 OF 2

**Detail "D"**

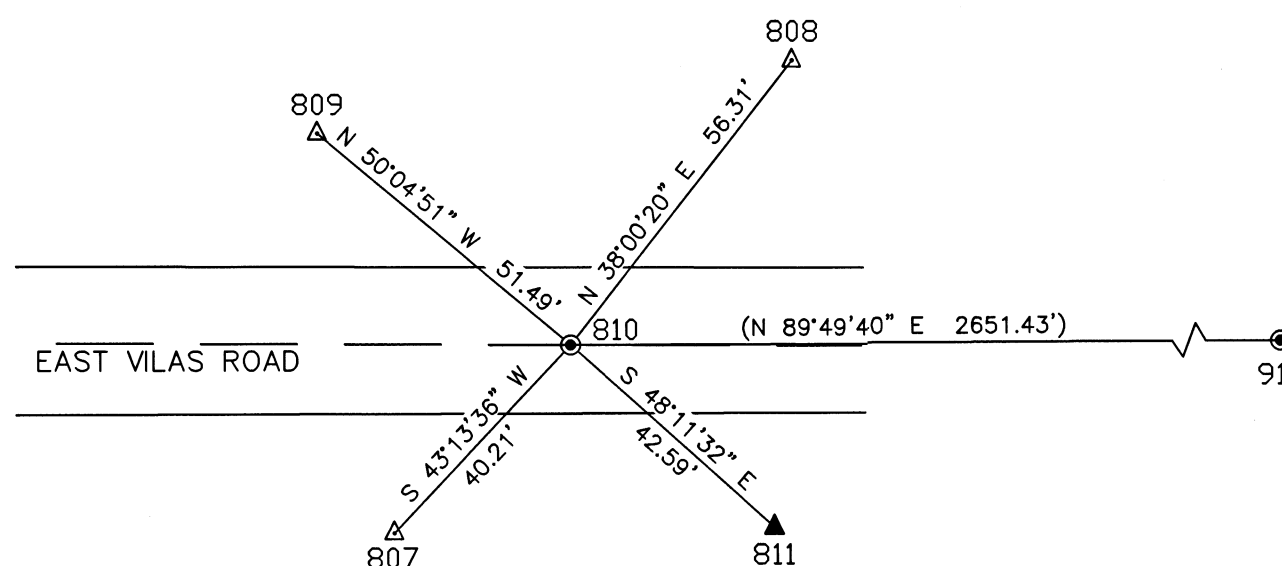
Township 36 & 37 South, Range 1 West  
Quarter corner common to Sections 33 & 4  
Point No. 1012  
GCDB 340100



(See note above right)

**Detail "B"**

Township 36 & 37 South, Range 1 West  
Quarter corner common to Sections 32 & 5  
Point No. 810  
GCDB 240700



Point	Northing	Easting	Description
807	233301.718	295717.321	(as noted below)
808	233375.388	295779.534	(as noted below)
809	233364.062	295705.372	(as noted below)
810	233331.020	295744.863	(as noted below)
811	233302.628	295776.609	(as noted below)

NOTE: CORNER MONUMENT FOUND AND POSITIONED ON FILED SURVEY NO. 23063 AS POINT NO. 802 IS NOW DESTROYED BY ROAD CONSTRUCTION. REPLACED MONUMENT AS NOTED BELOW. REFERENCE POINTS 800, 801, 803, AND 806 ARE ALSO DESTROYED.

807) PRIMARY GPS CONTROL POINT - SEE SHEET 1 - SET 5/8 X 24 INS. REBAR WITH 2 INS. DIAMETER ALUMINUM CAP MARKED "JACKSON COUNTY SURVEYOR" ON SOUTH SIDE OF EAST VILAS ROAD, EXPOSED 3 INS., 3 FEET NORTH OF EAST-WEST BEARING WIRE FENCE, 33 FEET WEST OF POWER POLE NO. 055961.

808) PRIMARY GPS CONTROL POINT - SEE SHEET 1 - SET 5/8 X 24 INS. REBAR WITH 2 INS. DIAMETER ALUMINUM CAP MARKED "JACKSON COUNTY SURVEYOR" ON NORTH SIDE OF EAST VILAS ROAD, FLUSH, 27 FEET NORTH OF ASPHALT ROAD EDGE, 36 FEET EAST OF NORTH-SOUTH BEARING WIRE FENCE.

809) PRIMARY GPS CONTROL POINT - SEE SHEET 1 - SET 5/8 X 24 INS. REBAR WITH 2 INS. DIAMETER ALUMINUM CAP MARKED "JACKSON COUNTY SURVEYOR" ON NORTH SIDE OF EAST VILAS ROAD, FLUSH, 18 FEET NORTH OF ASPHALT ROAD EDGE, 36 FEET WEST OF NORTH-SOUTH BEARING WIRE FENCE.

810) SET 1 X 18 INS. GALVANIZED IRON PIPE (FLARED AT END) IN CONCRETE AND MONUMENT CASE FLUSH WITH ROAD ASPHALT, WITH 2 1/2 INS. DIAMETER BRASS CAP MARKED AS SHOWN.

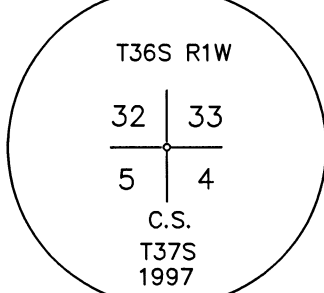
811) SET 5/8 X 24 INS. REBAR WITH 2 INS. DIAMETER ALUMINUM CAP MARKED "JACKSON COUNTY SURVEYOR" ON TOP OF SOUTH DITCH CUTBANK OF EAST VILAS ROAD, 33 FEET EAST OF POWER POLE NO. 055961, 1.5 FEET NORTH OF EAST-WEST BEARING WIRE FENCE LINE.

916) SECTION CORNER COMMON TO SECTIONS 32, 33, 4, AND 5, TOWNSHIP 36 AND 37 SOUTH, RANGE 1 WEST - SET MONUMENT AS NOTED ON SHEET 2 DETAIL "C"

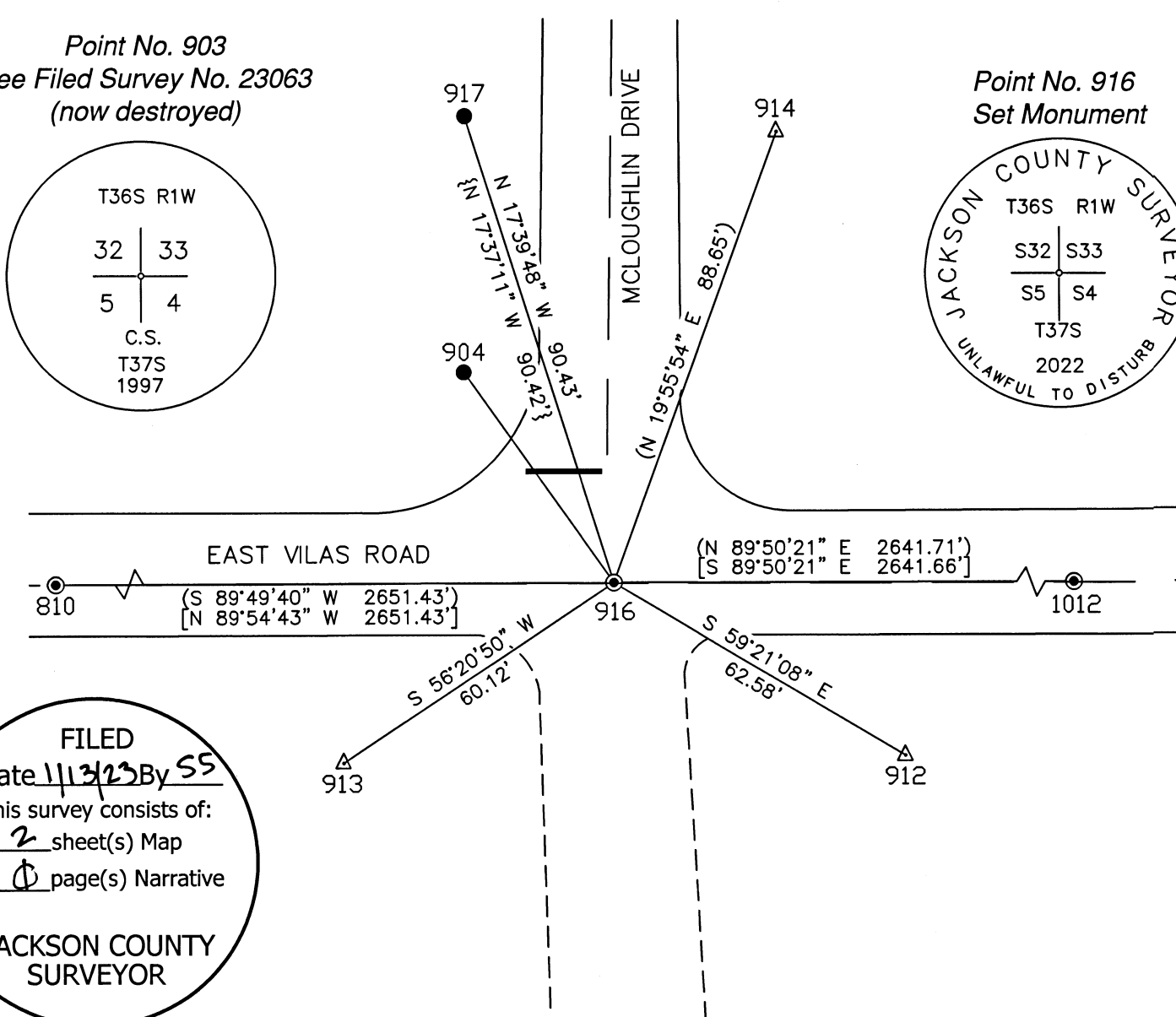
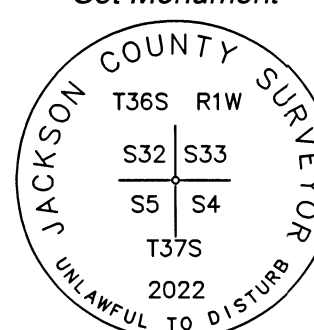
**Detail "C"**

Township 36 & 37 South, Range 1 West  
Section corner common to Sections 32, 33, 4, and 5  
Point No. 916  
GCDB 300100

Point No. 903  
See Filed Survey No. 23063  
(now destroyed)



Point No. 916  
Set Monument



NOTE: CORNER MONUMENT FOUND AND POSITIONED ON FILED SURVEY NO. 23063 AS POINT NO. 903 IS NOW DESTROYED BY ROAD CONSTRUCTION. REPLACED MONUMENT AS NOTED BELOW. REFERENCE POINTS 900, 901, 906, 905, AND 908 ARE ALSO DESTROYED OR SEVERELY DISTURBED AND NOT UTILIZED FOR POSITIONING OF THE NEW REPLACEMENT MONUMENT.

912) PRIMARY GPS CONTROL POINT - SEE SHEET 1 - SET 1 IN. DIAMETER BRASS CAP MARKED "CS" IN TOP OF EAST END OF 18 INS. DIAMETER CONCRETE CULVERT AT THE SOUTHEAST CORNER OF EAST VILAS ROAD AND MCLOUGHLIN DRIVE INTERSECTION.

913) PRIMARY GPS CONTROL POINT - SEE SHEET 1 - SET 1 IN. DIAMETER BRASS CAP MARKED "CS" IN TOP OF WEST END OF 18 INS. DIAMETER CONCRETE CULVERT AT THE SOUTHWEST CORNER OF EAST VILAS ROAD AND MCLOUGHLIN DRIVE INTERSECTION.

914) PRIMARY GPS CONTROL POINT - SEE SHEET 1 - FOUND 5/8 IN. REBAR WITH 2 INS. DIAMETER ALUMINUM CAP MARKED "JACKSON COUNTY SURVEYOR" AND SHOWN AS CONTROL POINT NUMBER 909 ON FILED SURVEY NUMBER 23063.

917) FOUND 5/8 IN. REBAR WITH 2 INS. DIAMETER ALUMINUM CAP MARKED "JACKSON COUNTY SURVEYOR" AND SHOWN AS CONTROL POINT NUMBER 910 ON FILED SURVEY NUMBER 23063. NOW SLIGHTLY DISTURBED AND LEANING WESTERLY.

904) FOUND MAPLE TREE, NOW 26 INS. DIAMETER, PER JCS FIFTH RE-ESTABLISHMENT, MEASUREMENT IS TO CENTER OF TREE AT BASE. SEE FILED SURVEY NUMBER 23063.

916) SET 1 X 18 INS. GALVANIZED IRON PIPE (FLARED AT END) IN CONCRETE AND MONUMENT CASE FLUSH WITH ROAD ASPHALT, WITH 2 1/2 INS. DIAMETER BRASS CAP MARKED AS SHOWN.

810) QUARTER CORNER COMMON TO SECTIONS 32 AND 5, TOWNSHIP 36 & 37 SOUTH, RANGE 1 WEST - SET MONUMENT AS NOTED ON SHEET 2 DETAIL "B"

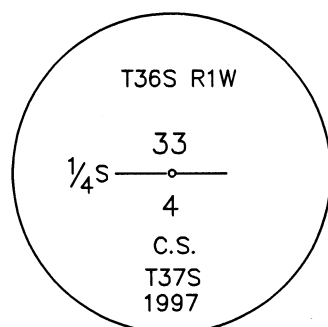
1012) QUARTER CORNER COMMON TO SECTIONS 33 AND 4, TOWNSHIP 36 & 37 SOUTH, RANGE 1 WEST - SET MONUMENT AS NOTED ON SHEET 2 DETAIL "D"

REFERENCE POINT DATA

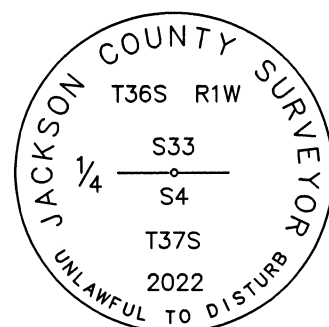
POINT NUMBERS	BEARING	DISTANCE
916 - 904	(N 35°26'56" W)	(47.70')
	(N 34°44' W)	(47.7')

Point	Northing	Easting	Description
810	233331.020	295744.863	(as noted above)
904	233377.854	298368.615	(as noted above)
912	233307.094	298450.121	(as noted above)
913	233305.681	298346.237	(as noted above)
914	233422.337	298426.501	(as noted above)
916	233338.996	298396.280	(as noted above)
917	233425.158	298368.843	(as noted above)
1012	233346.408	301037.978	(as noted above)

Point No. 1003  
See Filed Survey No. 23063  
(now destroyed)



Point No. 1012  
Set Monument



NOTE: CORNER MONUMENT FOUND AND POSITIONED ON FILED SURVEY NO. 23063 AS POINT NO. 1003 IS NOW DESTROYED BY ROAD CONSTRUCTION. REPLACED MONUMENT AS NOTED BELOW. REFERENCE POINTS 1002, 1004, AND 1006 ARE ALSO DESTROYED OR SEVERELY DISTURBED AND NOT UTILIZED FOR POSITIONING OF THE NEW REPLACEMENT MONUMENT.

1000) PRIMARY GPS CONTROL POINT PER FILED SURVEY NUMBER 23063 - SEE SHEET 1 - FOUND 5/8 X 24 INS. REBAR WITH 2 INS. DIAMETER ALUMINUM CAP MARKED "JACKSON COUNTY SURVEYOR" ON SOUTH SIDE OF EAST VILAS ROAD.

1009) PRIMARY GPS CONTROL POINT - SEE SHEET 1 - FOUND 5/8 IN. REBAR WITH 2 INS. DIAMETER ALUMINUM CAP MARKED "JACKSON COUNTY SURVEYOR", ON TOP OF NORTH DITCH CUTBANK OF EAST VILAS ROAD, SLIGHTLY DISTURBED AND LEANING NORTHERLY, AND SHOWN AS CONTROL POINT NUMBER 1005 ON FILED SURVEY NUMBER 23063.

1010) PRIMARY GPS CONTROL POINT - SEE SHEET 1 - FOUND 5/8 IN. REBAR WITH 2 INS. DIAMETER ALUMINUM CAP MARKED "JACKSON COUNTY SURVEYOR", SLIGHTLY DISTURBED AND LEANING NWLY, AND SHOWN AS CONTROL POINT NUMBER 1001 ON FILED SURVEY NUMBER 23063.

1013) SET 1 IN. DIAMETER BRASS CAP FLUSH IN CONCRETE AT THE NW CORNER OF A TYPE "D" STORM DRAIN INLET ON THE SOUTH SIDE OF EAST VILAS ROAD, 20 FEET EAST OF CENTERLINE OF DRIVEWAY TO HOUSE NUMBER 2938.

1014) SET 1 IN. DIAMETER BRASS CAP FLUSH IN CONCRETE AT THE NW CORNER OF A STORM DRAIN INLET ON THE NORTH SIDE OF EAST VILAS ROAD, 27 FEET WEST OF POWER POLE NUMBER 01337001-334001.

1012) SET 1 X 18 INS. GALVANIZED IRON PIPE (FLARED AT END) IN CONCRETE AND MONUMENT CASE FLUSH WITH ROAD ASPHALT, WITH 2 1/2 INS. DIAMETER BRASS CAP MARKED AS SHOWN.

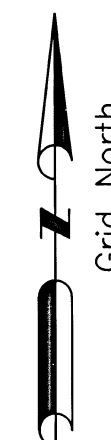
916) SECTION CORNER COMMON TO SECTIONS 32, 33, 4, & 5, TOWNSHIP 36 & 37 SOUTH, RANGE 1 WEST - SET MONUMENT AS NOTED ON SHEET 2 DETAIL "C"

1103) SECTION CORNER COMMON TO SECTIONS 33, 34, 3, & 4, TOWNSHIP 36 & 37 SOUTH, RANGE 1 WEST - SEE FILED SURVEY NUMBER 23063 FOR CORNER MONUMENT INFORMATION.

Point	Northing	Easting	Description
916	233338.996	298396.280	(as noted above)
1000	233301.788	301055.738	(as noted above)
1009	233383.692	301086.782	(as noted above)
1010	233397.811	301020.753	(as noted above)
1012	233346.408	301037.978	(as noted above)
1013	233316.165	301013.564	(as noted above)
1014	233377.383	300985.119	(as noted above)
1103	233353.880	303679.485	(as noted above)

LEGEND - SHEET 2

- ⊙ = SET PUBLIC LAND SURVEY SYSTEM (P.L.S.S.) MONUMENT AS NOTED
- ⊕ = PRIMARY GPS CONTROL POINTS - FOUND OR SET MONUMENT AS NOTED
- ▲ = SET CONTROL/REFERENCE POINT (CONVENTIONAL SURVEY METHODS)
- = FOUND MONUMENT AS NOTED
- JCS = JACKSON COUNTY SURVEYOR
- INS. = INCHES
- ACAP = ALUMINUM CAP
- ( ) = RECORD PER FILED SURVEY NUMBER 23063 AND RE-MEASURED THIS SURVEY
- < > = RECORD PER JCS SECOND RE-ESTABLISHMENT DATED 1988
- { } = RECORD PER FILED SURVEY NUMBER 23063
- [ ] = RECORD PER JCS FIFTH RE-ESTABLISHMENT DATED 1997



Scale: 1"=30'

REGISTERED  
PROFESSIONAL  
LAND SURVEYOR

SCOTT FEIN  
OREGON  
NOVEMBER 10, 2010  
SCOTT D. FEIN  
83181  
Expires 12/31/2023

Jackson County Surveyor  
Scott Fein, PLS, CWRE

10 S. Oakdale Ave., Medford, OR 97501 (541) 774-6191

Field work was performed: November 2022  
Reviewed By: SDF 1/10/2023

Field Crew: OR, JH  
CS Job File: N.A.

Drawn By: OR 11/24/22  
Approved: SDF 1/10/2023

sv-base vilas rd mos sheet 2.DWG SHEET 2 OF 2