

MAP OF SURVEY

SURVEY FOR: JUNIPER PROPERTIES, LLC
P.O. BOX 1127 ROSEBURG, OREGON 97470

SURVEY BY: LONE ROCK TIMBER MANAGEMENT COMPANY
P.O. BOX 1127 ROSEBURG, OREGON 97470

NORTHWEST QUARTER OF SECTION 20, TOWNSHIP 33 SOUTH, RANGE 3 WEST, WILLAMETTE MERIDIAN, JACKSON COUNTY, OREGON

DATE: JULY 2022 TRACT: M3303W20

CORNER INFORMATION

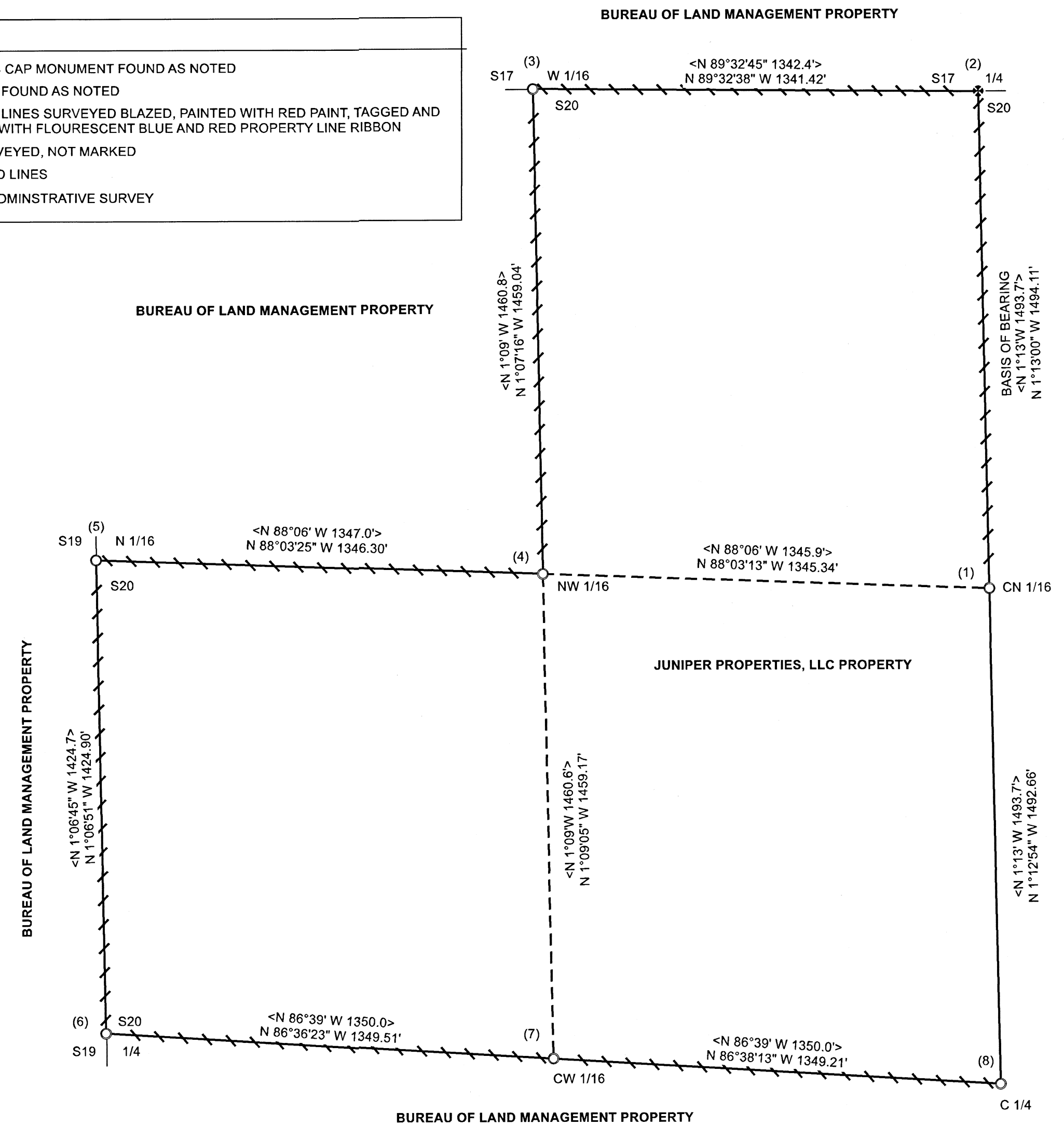
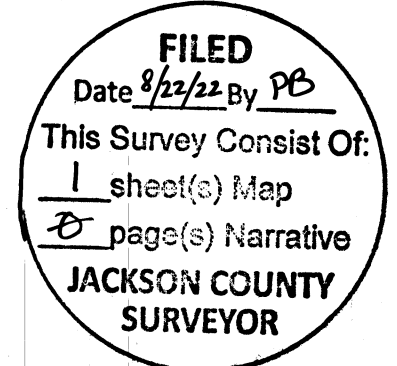
- CENTER NORTH 1/16TH CORNER OF SECTION 20 (GCDB 240360)
FOUND 5/8" IRON ROD AS PER 1977 BLM ADMINISTRATIVE SURVEY
--FOUND UNRECORDED 9" MADRONE BEARS N54°W 59.5 FEET WITH A YELLOW TAG AND NO VISIBLE FACE
--18" CANYON LIVE OAK FOUND AT 1977 BLM RECORD S45 1/2"W 37.0 FEET, WITH A BLM TAG AND WELL HEALED FACE
--15" PONDEROSA PINE FOUND AT 1977 BLM RECORD N20°W 17.3 FEET, WITH A BLM TAG AND WELL HEALED FACE
THE CORNER LIES ON STEEP SOUTH SLOPE. TOP OF CORNER MONUMENT IS 0.3 FEET ABOVE GROUND
- QUARTER CORNER OF SECTIONS 17 AND 20 (GCDB 240400)
FOUND BLM BRASS CAP MARKED T33S R3W 1/4 S17 S20 1968 AS PER 1968 BLM CORNER RESTORATION NOTES
--51" DOUGLAS-FIR BEARS N70 1/2°E 15.0 FEET (RECORD N68°E 14.5 FEET (22LKS), BLM 1968) WITH A BLM TAG AND VISIBLE BARK SCRIBE
--ROTTEN FIR STUMP BEARS N85°E 39.7 FEET (RECORD N85°E 38.6 FEET (58 1/2 LKS), BLM 1968) WITH NO TAG
--43" SUGAR PINE BEARS S64 3/4°W 12.7 FEET (RECORD S65°W 12.9 (19 1/2 LKS), BLM 1968) WITH A BLM TAG AND NO VISIBLE SCRIBE
THE CORNER LIES APPROXIMATELY 90 FEET EAST OF CREEK. TOP OF CORNER MONUMENT IS 0.25 FEET ABOVE GROUND
- WEST 1/16TH CORNER OF SECTIONS 17 AND 20 (GCDB 220400)
FOUND 5/8" IRON ROD AS PER 1977 BLM ADMINISTRATIVE SURVEY
--14" DOUGLAS-FIR BEARS S33°E 12.6 FEET (RECORD S33 1/2° 13.4 FEET, BLM 1977) WITH A BLM TAG AND WELL HEALED FACE
--11" PONDEROSA PINE BEARS N83°W 17.2 FEET (RECORD N82 1/2°W 17.3 FEET, BLM 1977) WITH A BLM TAG AND WELL HEALED FACE
THE CORNER LIES ON A STEEP WEST SLOPE APPROXIMATELY 30 FEET EAST OF OLD SKID TRAIL. TOP OF CORNER MONUMENT IS 0.3 FEET ABOVE GROUND
- NORTHWEST 1/16TH CORNER OF SECTION 20 (GCDB 220360)
FOUND 5/8" IRON ROD AS PER 1977 BLM ADMINISTRATIVE SURVEY
--14" PONDEROSA PINE BEARS S63 1/2°W 41.1 FEET (RECORD S63 1/4° 41.7 FEET, BLM 1977) WE TAGGED AND NO VISIBLE FACE
--13" PONDEROSA PINE BEARS N70 3/4°W 18.7 FEET (RECORD N89 1/4°W 19.1 FEET, BLM 1977) WITH A BLM TAG AND WELL HEALED FACE
CORNER LIES ON TOP OF RIDGE EAST OF OLD SKID ROAD. TOP OF CORNER MONUMENT IS 0.6 FEET ABOVE GROUND
- NORTH 1/16TH CORNER OF SECTION 19 AND 20 (GCDB 200360)
FOUND 5/8" IRON ROD AS PER 1977 BLM ADMINISTRATIVE SURVEY
--5" CHINQUAPIN SNAG BEARS S64 3/4°W 11.1 FEET (RECORD S65°W 11.2 FEET, BLM 1977) WITH A BLM TAG AND ROTTEN FACE
--14" PACIFIC MADRONE BEARS S70 1/2°E 44.4 FEET (RECORD S70 1/2°E 44.5 FEET, BLM 1977) WITH A BLM TAG AND HEALED FACE
--49" DOUGLAS-FIR BEARS N65 1/2°E 17.3 FEET. WE TAG AND SCRIBE N1/16 S20 BT
--43" DOUGLAS-FIR BEARS N30 1/4°W 33.1 FEET. WE TAG AND SCRIBE N 1/16 S19 BT
CORNER LIES ON STEEP NORTH FACING SLOPE APPROXIMATELY 80' NORTH OF RIDGE RUNNING NORTHWEST-SOUTHEAST. WE PLACE A U-POST 1 FOOT NORTH OF THE CORNER. TOP OF CORNER MONUMENT IS 0.4 FEET ABOVE GROUND
- QUARTER CORNER OF SECTIONS 19 AND 20 (GCDB 200340)
FOUND 5/8" IRON ROD AS PER 1977 BLM ADMINISTRATIVE SURVEY
--9" CANYON LIVE OAK BEARS S70 3/4°W 14.0 FEET (RECORD S71°W 13.5 FEET, BLM 1977). TREE HAS A WELL HEALED FACE. WE RE-TAG
--8" CANYON LIVE OAK BEARS N18°W 25.0 FEET. WE TAG AND SCRIBE W 1/4 S19 BT
--38" DOUGLAS-FIR FOUND AT BLM 1977 RECORD S6°E 3.3 FEET. TREE HAS A WELL HEALED FACE. WE RE-TAG
THE CORNER LIES ON STEEP WEST FACING SLOPE APPROXIMATELY 70 FEET WEST OF DRY CREEK CHANNEL. TOP OF CORNER MONUMENT IS 0.2 FEET ABOVE GROUND
- CENTER WEST 1/16TH CORNER OF SECTION 20 (GCDB 220340)
FOUND 5/8" IRON ROD AS PER 1977 BLM ADMINISTRATIVE SURVEY
--7" DOUGLAS-FIR BEARS S55 1/4°E 7.1 FEET (RECORD S55 1/2°E 7.1 FEET, BLM 1977) WITH A BLM TAG AND WELL HEALED FACE
--13" PONDEROSA PINE BEARS N37 3/4°W 14.4 FEET (RECORD N37 1/2°W 14.3 FEET, BLM 1977) WITH A BLM TAG AND NO VISIBLE FACE
--SET 5/8" X 40" IRON ROD REFERENCE WITH ORANGE PLASTIC CAP MARKED LONE ROCK TIMBER 85006PLS BEARS S14°09'24"W 100.62 FEET
FROM WHICH:
--11" CANYON LIVE OAK BEARS N57 1/2°W 13.1 FEET. WE TAG AND SCRIBE BT
--9" PONDEROSA PINE BEARS S48 1/4°W 16.0 FEET. WE TAG AND SCRIBE BT
--SET 5/8"X40" IRON ROD REFERENCE WITH ORANGE PLASTIC CAP MARKED LONE ROCK TIMBER 85006PLS BEARS S43°39'14"W 84.08 FEET
FROM WHICH:
--10" DOUGLAS-FIR BEARS S88 1/4°E 8.3 FEET. WE TAG AND SCRIBE BT
--7" PONDEROSA PINE BEARS N40 3/4°W 25.8 FEET. WE TAG AND SCRIBE BT
CORNER LIES APPROXIMATELY 100 FEET SOUTH OF RIDGETOP RUNNING NORTHEAST-SOUTHWEST, ON GENTLE SOUTHEAST FACING SLOPE. TOP OF CORNER MONUMENT IS 0.5 FEET ABOVE GROUND
- CENTER QUARTER CORNER OF SECTION 20 (GCDB 240340)
FOUND 5/8" IRON ROD AS PER HOFFINE 2014 CORNER RESTORATION 21401
--13" DOUGLAS-FIR FOUND AT 2014 HOFFINE RESTORATION 21401 RECORD N71°W 15.1 FEET WITH TAG AND MOSTLY HEALED FACE
-- FOUND ROTTEN STUMP AT 2014 HOFFINE RESTORATION 21401 RECORD S83°E 16.6 FEET WITH NO TAG OR VISIBLE MARKS
-- 9" DOUGLAS-FIR FOUND AT 2014 HOFFINE RESTORATION 21401 S84°E 8.2 FEET WITH TAG AND MOSTLY HEALED FACE
CORNER LIES ON STEEP NORTH FACING SLOPE APPROXIMATELY 100 FEET SOUTH OF STREAM. TOP OF CORNER MONUMENT IS 0.5 FEET ABOVE GROUND

NARRATIVE

THE PURPOSE THIS SURVEY IS TO MARK THE PROPERTY LINES SHOWN HEREON FOR THE JUNIPER PROPERTIES, LLC FOREST LAND TRACT IN SECTION 20, TOWNSHIP 33 SOUTH, RANGE 3 WEST W.M., FOR TIMBER MANAGEMENT PURPOSES. WE COMMENCED THIS SURVEY AT THE CENTER NORTH 1/16TH CORNER (1) AND RAN A RANDOM CLOSED LOOP TRAVERSE THROUGH CORNERS 2, 3, 4, 5, 6, 7, AND 8 AND CLOSED BACK ON THE CENTER NORTH 1/16TH. WE FOUND THE EXISTING CORNERS MONUMENTS SHOWN, AS PER THE BLM 1977 ADMINISTRATIVE SURVEY. GIVEN THE LONG-STANDING NATURE, PRIOR ACCEPTANCE OF CERTAIN OF THESE CORNER MONUMENTS (HOFFINE 2014 CORNER RESTORATION 21401), AND THE APPARENT CAREFUL NATURE WITH WHICH THE 1977 BLM ADMINISTRATIVE SURVEY APPEARS TO HAVE BEEN CONDUCTED, AS EVIDENCED BY COMPARISON WITH OUR MEASUREMENTS, WE CHOOSE TO ACCEPT THE POSITIONS OF THE FOUND MONUMENTS SHOWN FOR THE SUBDIVISION THE NORTHWEST 1/4 OF SECTION 20 AND HOLD THE POSITIONS OF THE FOUND MONUMENTS AS THE BEST EVIDENCE OF THE CORNERS. WE SET REFERENCE MONUMENTS AND MARKED BEARING TREES FOR THE REFERENCE MONUMENTS NEAR THE CENTER WEST 1/16TH CORNER, DUE TO PLANNED CONSTRUCTION OF A NEW ROAD AND LOGGING LANDING NEAR THE EXISTING CORNER MONUMENT. WE PLAN TO RE-ESTABLISH THE CENTER WEST 1/16TH USING THESE REFERENCE MONUMENTS IN THE EVENT THAT IT IS DISTURBED DURING SUMMER 2022 ROAD CONSTRUCTION OR FUTURE LOGGING OPERATIONS. PROPERTY LINES SHOWN AS MARKED ON THIS MAP WERE QUARTER BLAZED AND PAINTED WITH RED PAINT, TAGGED WITH ALUMINUM PROPERTY LINE TAGS, AND FLAGGED WITH RED PROPERTY LINE AND FLUORESCENT BLUE RIBBON. NEW BEARING TREES WERE SCRIBED AT THE ROOT COLLAR AND PAINTED WITH RED PAINT AND TAGGED. DISTANCES TO BEARING TREES WERE MEASURED WITH A TOTAL STATION TO AN ALUMINUM NAIL AT THE SIDE-CENTER OF THE TREE AND BEARINGS WERE COMPUTED BY TURNING HORIZONTAL ANGLES FROM SURVEY CONTROL POINTS TO AN ALUMINUM NAIL IN THE CENTER-FACE OF THE BEARING TREE. THIS SURVEY WAS CONDUCTED USING A TOPCON ES 62 TOTAL STATION AND A TRIMBLE C5 TOTAL STATION, WITH BRETT RAGON, IGNACIO ROMAN, AND WESTON ADDINGTON ASSISTING ME.

LEGEND

- BLM BRASS CAP MONUMENT FOUND AS NOTED
- 5/8" REBAR FOUND AS NOTED
- PROPERTY LINES SURVEYED BLAZED, PAINTED WITH RED PAINT, TAGGED AND RIBBONED WITH FLOURESCENT BLUE AND RED PROPERTY LINE RIBBON
- LINES SURVEYED, NOT MARKED
- PROJECTED LINES
- 1977 BLM ADMINSTRATIVE SURVEY

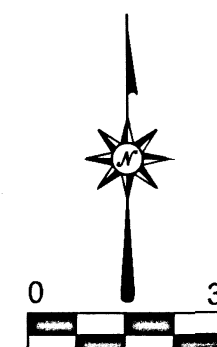


REGISTERED PROFESSIONAL LAND SURVEYOR

Daniel E. Saily

OREGON NOVEMBER 10, 2020 DANIEL E. SAILY 85006

EXPIRES: 6/30/2024



BASIS OF BEARING FROM 1977 BLM ADMINISTRATIVE SURVEY