

Survey for Mr. A.C. Pierce, Pierce Heights, Medford, Oregon.

Date November 29, 1963

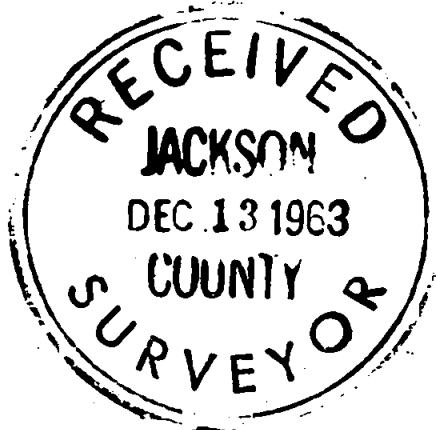
Located in NE 1/4 of NW 1/4 S. 34,
T. 38 S. R. 3 W, W.M. Jackson County, Ore.

Bearings from Sunshine Village Subd.
Scale 1" = 100'

REGISTERED
OREGON
LAND SURVEYOR

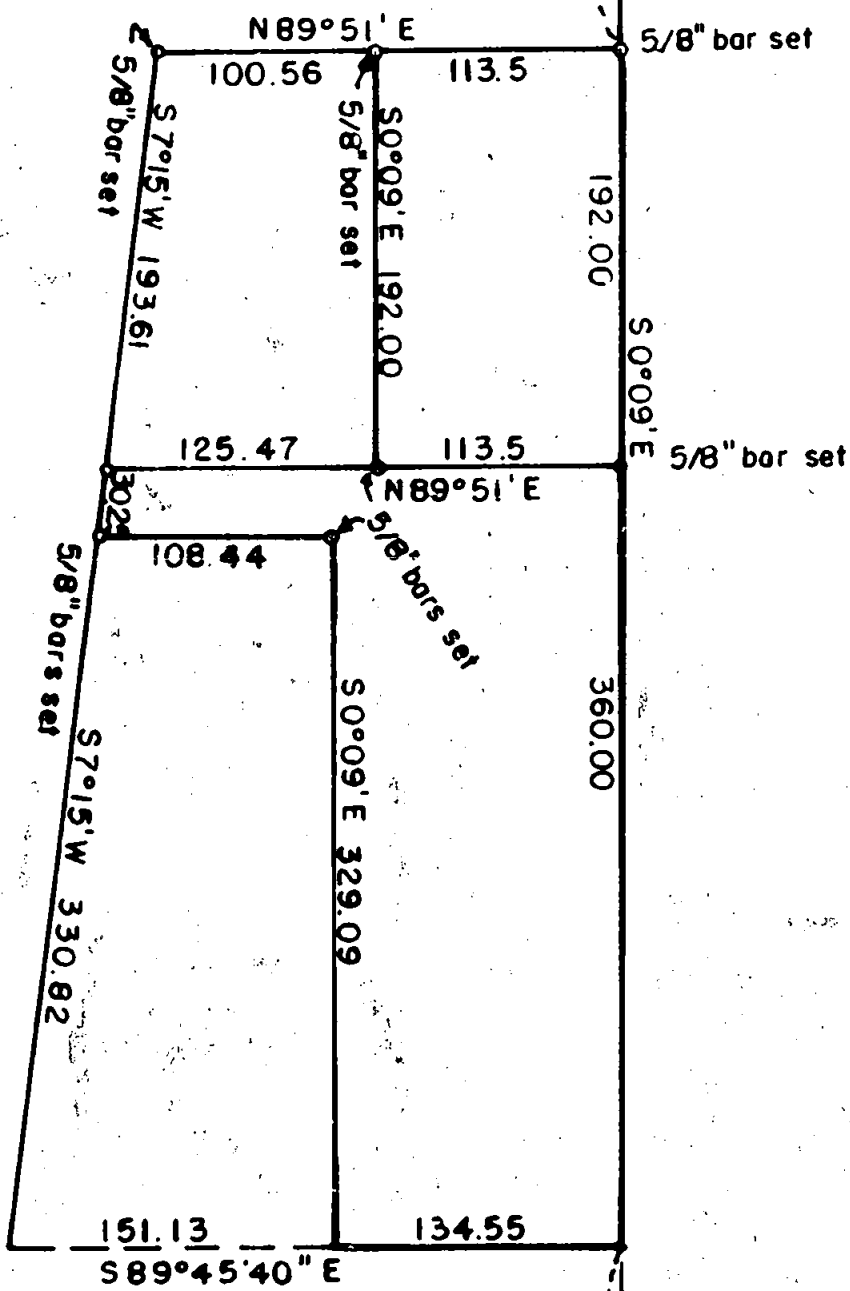
L. N. Dow

MAY 6, 1949
L. N. DOW
251



27
34
1/4 cor.
pipe found

50°09'E 758.24



50°09'E

360.00

3930.72

3
1/4 cor.
pipe found

S. 34, T. 38 S. R. 3 W.

SCALE 1" = 100'



Written narrative to accompany plat for Survey No. 2371

Survey for Mr. A.C. Pierce, Pierce Heights, Medford, Oregon.

Survey located in NE 1/4 of NW 1/4 S 34, T 38S, R 3 W.
Jackson County, Oregon.

Dated November 29, 1963

Bearings from Sunshine Village Subdivision.

Procedure: in the process of developing the data for Sunshine Village Subdivision a traverse tie was made from the 1/4 corner on the North line of Section 34, to the 1/4 corner on the South line of Section 34, and bearings and distances were computed for this line.

These bearings were used on this survey for the common line established along the east part of this survey.

Commencing at the 1/4 corner on the north line of said Section 34, we ran S 0°09'E 758.24 feet and set a 5/8" iron bar, then continued along the same line and chained 192.00 feet and set a 5/8" bar

then ran S 89°51'W 113.5 feet and set a 5/8" iron bar,
continued S 89°51'W 125.47 feet and set a 5/8" bar,
then ran N 7°15'E 193.61 feet and set a 5/8" bar
then ran N 89°51'E 100.56 and set a 5/8" bar.

then returning to the bar that is S 0°09'E 950.24 and S 89°51'W 238.97 feet from the 1/4 corner we ran S 7°15'W 30/25 feet and set a 5/8" iron bar, we then ran N 89°51'E 108.44 feet and set a 5/8" iron bar as shown on the plat.

