

MAP OF SURVEY

SURVEY FOR: JUNIPER PROPERTIES, LLC
P.O. BOX 1127 ROSEBURG, OREGON 97470

SURVEY BY: LONE ROCK TIMBER MANAGEMENT COMPANY
P.O. BOX 1127 ROSEBURG, OREGON 97470

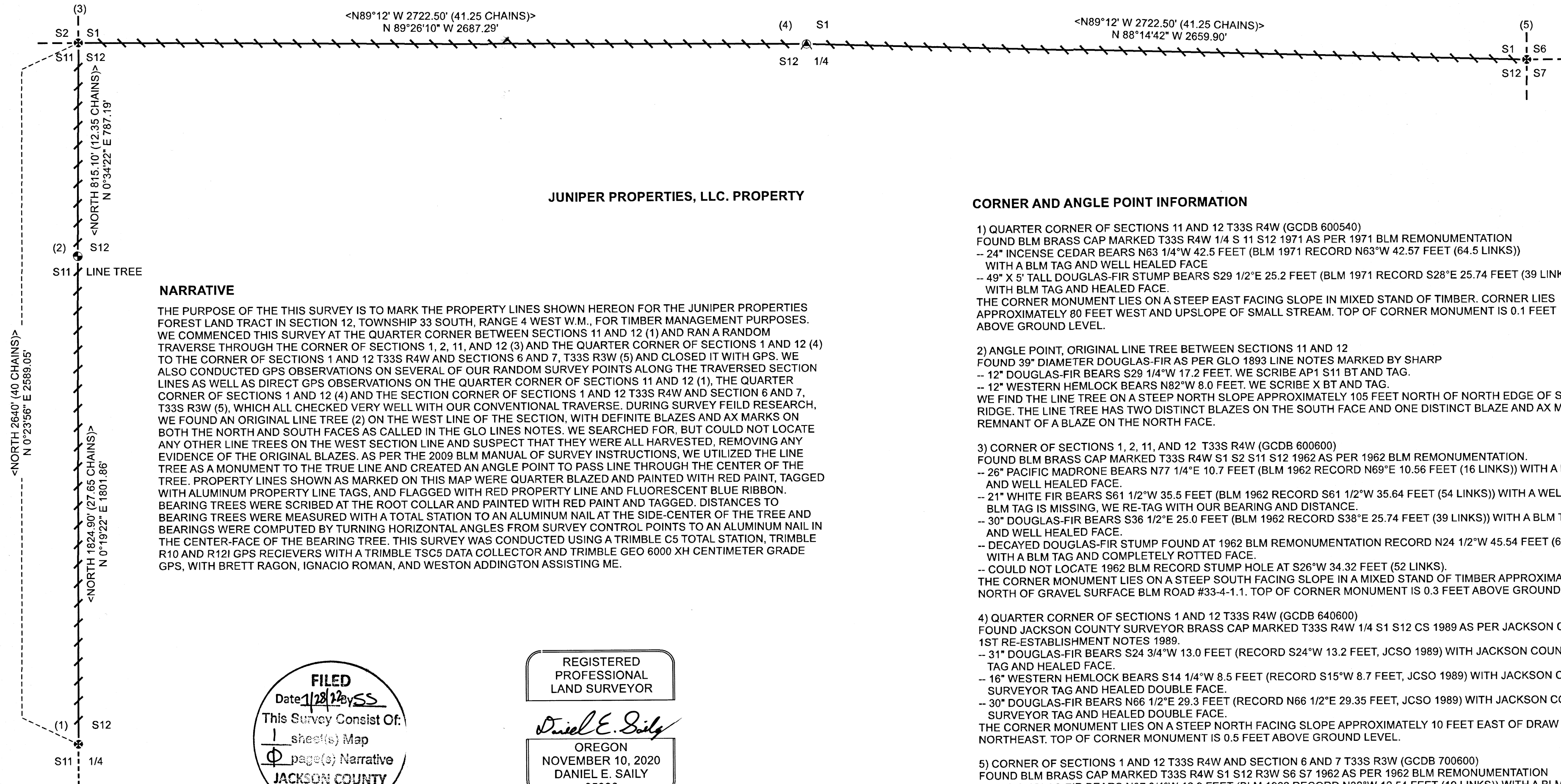
NORTHWEST 1/4 AND THE NORTHEAST 1/4 OF SECTION 12, TOWNSHIP 33 SOUTH, RANGE 4 WEST, WILLAMETTE MERIDIAN, JACKSON COUNTY, OREGON

DATE: JULY 2022

TRACT: M3304W12

BUREAU OF LAND MANAGEMENT PROPERTY

JUNIPER PROPERTIES, LLC. PROPERTY



NARRATIVE

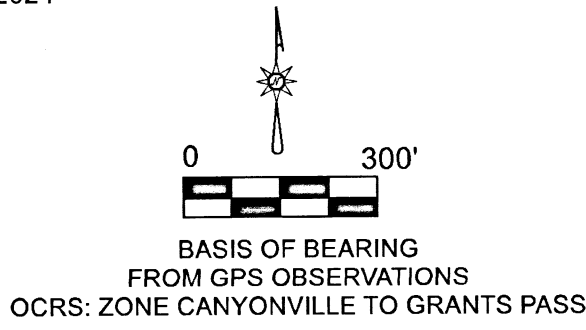
THE PURPOSE OF THIS SURVEY IS TO MARK THE PROPERTY LINES SHOWN HEREON FOR THE JUNIPER PROPERTIES FOREST LAND TRACT IN SECTION 12, TOWNSHIP 33 SOUTH, RANGE 4 WEST W.M., FOR TIMBER MANAGEMENT PURPOSES. WE COMMENCED THIS SURVEY AT THE QUARTER CORNER BETWEEN SECTIONS 11 AND 12 (1) AND RAN A RANDOM TRAVERSE THROUGH THE CORNER OF SECTIONS 1, 2, 11, AND 12 (3) AND THE QUARTER CORNER OF SECTIONS 1 AND 12 (4) TO THE CORNER OF SECTIONS 1 AND 12 T33S R4W AND SECTIONS 6 AND 7, T33S R3W (5) AND CLOSED IT WITH GPS. WE ALSO CONDUCTED GPS OBSERVATIONS ON SEVERAL OF OUR RANDOM SURVEY POINTS ALONG THE TRAVERSED SECTION LINES AS WELL AS DIRECT GPS OBSERVATIONS ON THE QUARTER CORNER OF SECTIONS 11 AND 12 (1), THE QUARTER CORNER OF SECTIONS 1 AND 12 (4) AND THE SECTION CORNER OF SECTIONS 1 AND 12 T33S R4W AND SECTION 6 AND 7, T33S R3W (5), WHICH ALL CHECKED VERY WELL WITH OUR CONVENTIONAL TRAVERSE. DURING SURVEY FIELD RESEARCH, WE FOUND AN ORIGINAL LINE TREE (2) ON THE WEST LINE OF THE SECTION, WITH DEFINITE BLAZES AND AX MARKS ON BOTH THE NORTH AND SOUTH FACES AS CALLED IN THE GLO LINES NOTES. WE SEARCHED FOR, BUT COULD NOT LOCATE ANY OTHER LINE TREES ON THE WEST SECTION LINE AND SUSPECT THAT THEY WERE ALL HARVESTED, REMOVING ANY EVIDENCE OF THE ORIGINAL BLAZES. AS PER THE 2009 BLM MANUAL OF SURVEY INSTRUCTIONS, WE UTILIZED THE LINE TREE AS A MONUMENT TO THE TRUE LINE AND CREATED AN ANGLE POINT TO PASS LINE THROUGH THE CENTER OF THE TREE. PROPERTY LINES SHOWN AS MARKED ON THIS MAP WERE QUARTER BLAZED AND PAINTED WITH RED PAINT, TAGGED WITH ALUMINUM PROPERTY LINE TAGS, AND FLAGGED WITH RED PROPERTY LINE AND FLUORESCENT BLUE RIBBON. BEARING TREES WERE SCRIBED AT THE ROOT COLLAR AND PAINTED WITH RED PAINT AND TAGGED. DISTANCES TO BEARING TREES WERE MEASURED WITH A TOTAL STATION TO AN ALUMINUM NAIL AT THE SIDE-CENTER OF THE TREE AND BEARINGS WERE COMPUTED BY TURNING HORIZONTAL ANGLES FROM SURVEY CONTROL POINTS TO AN ALUMINUM NAIL IN THE CENTER-FACE OF THE BEARING TREE. THIS SURVEY WAS CONDUCTED USING A TRIMBLE C5 TOTAL STATION, TRIMBLE R10 AND R12 GPS RECEIVERS WITH A TRIMBLE TSC5 DATA COLLECTOR AND TRIMBLE GEO 6000 XH CENTIMETER GRADE GPS, WITH BRETT RAGON, IGNACIO ROMAN, AND WESTON ADDINGTON ASSISTING ME.

CORNER AND ANGLE POINT INFORMATION

- 1) QUARTER CORNER OF SECTIONS 11 AND 12 T33S R4W (GCDB 600540)
FOUND BLM BRASS CAP MARKED T33S R4W 1/4 S11 S12 1971 AS PER 1971 BLM REMONUMENTATION
-- 24" INCENSE CEDAR BEARS N63 1/4"W 42.5 FEET (BLM 1971 RECORD N63"W 42.57 FEET (64.5 LINKS))
WITH A BLM TAG AND WELL HEALED FACE
-- 49" X 5' TALL DOUGLAS-FIR STUMP BEARS S29 1/2"E 25.2 FEET (BLM 1971 RECORD S28"E 25.74 FEET (39 LINKS))
WITH BLM TAG AND HEALED FACE.
THE CORNER MONUMENT LIES ON A STEEP EAST FACING SLOPE IN MIXED STAND OF TIMBER. CORNER LIES APPROXIMATELY 80 FEET WEST AND UPSLOPE OF SMALL STREAM. TOP OF CORNER MONUMENT IS 0.1 FEET ABOVE GROUND LEVEL.
- 2) ANGLE POINT, ORIGINAL LINE TREE BETWEEN SECTIONS 11 AND 12
FOUND 39" DIAMETER DOUGLAS-FIR AS PER GLO 1893 LINE NOTES MARKED BY SHARP
-- 12" DOUGLAS-FIR BEARS S29 1/4"W 17.2 FEET. WE SCRIBE AP1 S11 BT AND TAG.
-- 12" WESTERN HEMLOCK BEARS N82"W 8.0 FEET. WE SCRIBE X BT AND TAG.
WE FIND THE LINE TREE ON A STEEP NORTH SLOPE APPROXIMATELY 105 FEET NORTH OF NORTH EDGE OF SMALL RIDGE. THE LINE TREE HAS TWO DISTINCT BLAZES ON THE SOUTH FACE AND ONE DISTINCT BLAZE AND AX MARK REMNANT OF A BLAZE ON THE NORTH FACE.
- 3) CORNER OF SECTIONS 1, 2, 11, AND 12 T33S R4W (GCDB 600600)
FOUND BLM BRASS CAP MARKED T33S R4W S1 S2 S11 S12 1962 AS PER 1962 BLM REMONUMENTATION.
-- 26" PACIFIC MADRONE BEARS N77 1/4"E 10.7 FEET (BLM 1962 RECORD N69"E 10.56 FEET (16 LINKS)) WITH A BLM TAG AND WELL HEALED FACE.
-- 21" WHITE FIR BEARS S61 1/2"W 35.5 FEET (BLM 1962 RECORD S61 1/2"W 35.64 FEET (54 LINKS)) WITH A WELL HEALED FACE. BLM TAG IS MISSING, WE RE-TAG WITH OUR BEARING AND DISTANCE.
-- 30" DOUGLAS-FIR BEARS S36 1/2"E 25.0 FEET (BLM 1962 RECORD S38"E 25.74 FEET (39 LINKS)) WITH A BLM TAG AND WELL HEALED FACE.
-- DECAYED DOUGLAS-FIR STUMP FOUND AT 1962 BLM REMONUMENTATION RECORD N24 1/2"W 45.54 FEET (69 LINKS) WITH A BLM TAG AND COMPLETELY ROTTED FACE.
-- COULD NOT LOCATE 1962 BLM RECORD STUMP HOLE AT S26"W 34.32 FEET (52 LINKS).
THE CORNER MONUMENT LIES ON A STEEP SOUTH FACING SLOPE IN A MIXED STAND OF TIMBER APPROXIMATELY 450 FEET NORTH OF GRAVEL SURFACE BLM ROAD #33-4-1.1. TOP OF CORNER MONUMENT IS 0.3 FEET ABOVE GROUND LEVEL.
- 4) QUARTER CORNER OF SECTIONS 1 AND 12 T33S R4W (GCDB 640600)
FOUND JACKSON COUNTY SURVEYOR BRASS CAP MARKED T33S R4W 1/4 S1 S12 CS 1989 AS PER JACKSON COUNTY 1ST RE-ESTABLISHMENT NOTES 1989.
-- 31" DOUGLAS-FIR BEARS S24 3/4"W 13.0 FEET (RECORD S24"W 13.2 FEET, JCSO 1989) WITH JACKSON COUNTY SURVEYOR TAG AND HEALED FACE.
-- 16" WESTERN HEMLOCK BEARS S14 1/4"W 8.5 FEET (RECORD S15"W 8.7 FEET, JCSO 1989) WITH JACKSON COUNTY SURVEYOR TAG AND HEALED DOUBLE FACE.
-- 30" DOUGLAS-FIR BEARS N66 1/2"E 29.3 FEET (RECORD N66 1/2"E 29.35 FEET, JCSO 1989) WITH JACKSON COUNTY SURVEYOR TAG AND HEALED DOUBLE FACE.
THE CORNER MONUMENT LIES ON A STEEP NORTH FACING SLOPE APPROXIMATELY 10 FEET EAST OF DRAW RUNNING NORTHEAST. TOP OF CORNER MONUMENT IS 0.5 FEET ABOVE GROUND LEVEL.
- 5) CORNER OF SECTIONS 1 AND 12 T33S R4W AND SECTION 6 AND 7 T33S R3W (GCDB 700600)
FOUND BLM BRASS CAP MARKED T33S R4W S1 S12 R3W S6 S7 1962 AS PER 1962 BLM REMONUMENTATION
-- 28" DOUGLAS-FIR BEARS N37 3/4"W 12.9 FEET (BLM 1962 RECORD N32"W 12.54 FEET (19 LINKS)) WITH A BLM TAG AND HEALED FACE.
-- 34" DOUGLAS-FIR BEARS N70 1/2"E 6.5 FEET (BLM 1962 RECORD N65"E 6.6 FEET (10 LINKS)) WITH A BLM TAG AND HEALED FACE
-- 40" DOUGLAS-FIR BEARS S11 3/4"W 12.1 FEET (BLM 1962 RECORD S12"W 12.54 FEET (19 LINKS)) WITH A WELL HEALED FACE. BLM TAG MISSING. WE RE-TAG WITH OUR BEARING AND DISTANCE.
-- 10" DOUGLAS-FIR FOUND AT 1962 BLM REMONUMENTATION RECORD S31 1/2"E 3.3 FEET (5 LINKS) WITH A BLM TAG AND HEALED FACE.
THE CORNER MONUMENT LIES ON A NORTHEAST FACING SLOPE APPROXIMATELY 60 FEET EAST OF OLD CAT ROAD. TOP OF CORNER MONUMENT IS 0.2 FEET ABOVE GROUND LEVEL.

FILED
Date: 1/28/22 by: SS
This Survey Consist Of:
1 sheet(s) Map
1 page(s) Narrative
JACKSON COUNTY SURVEYOR

REGISTERED PROFESSIONAL LAND SURVEYOR
Daniel E. Saily
OREGON
NOVEMBER 10, 2020
DANIEL E. SAILY
85006
EXPIRES: 6/30/2024



| LEGEND | |
|--------|--|
| | ANGLE POINT, ORIGINAL LINE TREE FOUND AS NOTED. |
| | BLM BRASS CAP MONUMENT FOUND AS NOTED. |
| | JACKSON COUNTY SURVEYOR BRASS CAP MONUMENT FOUND AS NOTED. |
| | PROPERTY LINES BLAZED, PAINTED WITH RED PAINT, TAGGED AND RIBBONED WITH FLOURESCENT BLUE AND RED PROPERTY LINE RIBBON. |
| | GLO 1893 LINE NOTES BY SHARP |

JACKSON COUNTY TAXLOT: 33 4W, TAXLOT: 1700