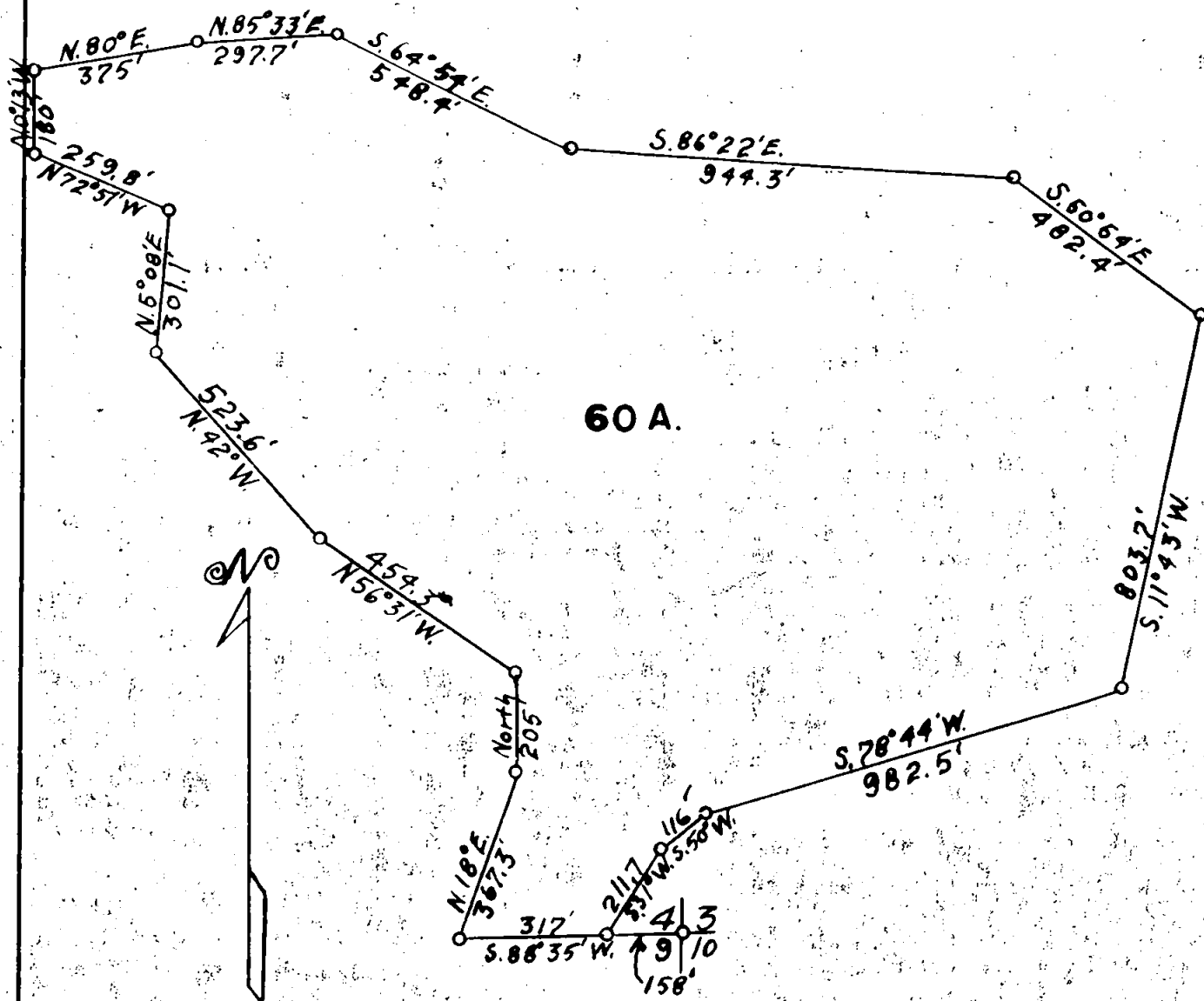


T.37S.R.3E., JACKSON COUNTY OREGON

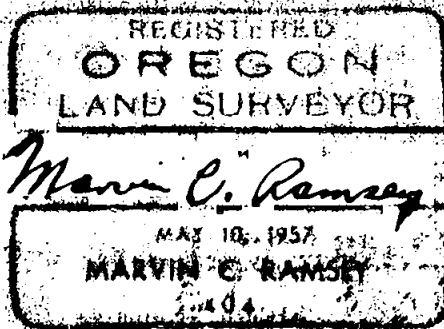
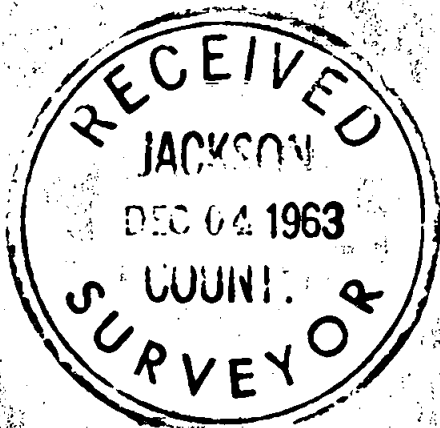
METES AND BOUNDS SURVEY IN SECTIONS 3 AND 4

By L.E. Ager December 1955

Retraced by Marvin C. Ramsey October 1963

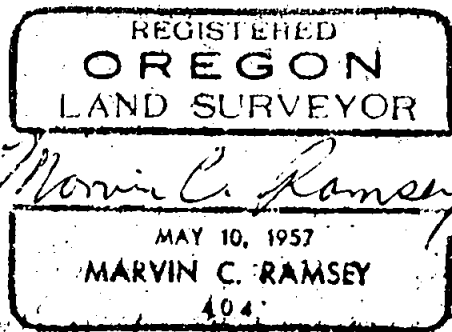
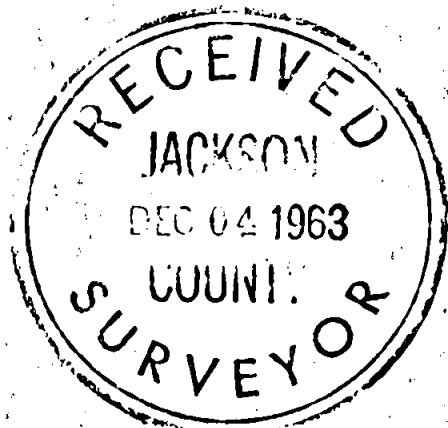


Scale: 1 inch = 400 feet



- Feet
- 482.4 S. 50° 54' E.
Angle point 14 from which
A Douglas fir 14 ins. in diam., bears S. 10° W., 11.2 feet
distance, mkd. AP 14 RSL404 BT
A white fir 8 ins. in diam., bears N. 25° W., 29.6 feet
distance, mkd. AP 14 RSL404 BT
- 803.7 S. 11° 43' W.
Angle point 15 from which
A white fir 8 ins. in diam., bears N. 29° E., 12.8 feet
distance, mkd. AP 15 RSL404 BT
A Douglas fir 16 ins. in diam., bears S. 20° W., 17 feet
distance, mkd. AP 15 RSL404 BT
- 982.5 S. 78° 44' W.
Angle point 16 from which
A ash 6 ins. in diam., bears N. 32° E., 22.9 feet
distance, mkd. AP 16 RSL404 BT
A Douglas fir 20 ins. in diam., bears S. 24° E., 20.7 feet
distance, mkd. AP 16 RSL404 BT
- 116 S. 50° W.
Angle point 17 from which
A Douglas fir 12 ins. in diam., bears N. 45° W., 18.7 feet
distance, mkd. AP 17 RSL404 BT
A Douglas fir 20 ins. in diam., bears S. 57½° E., 14 feet
distance, mkd. AP 17 RSL404 BT
- 211.7 S. 31° W.
Angle point 1 the point of beginning. Containing 60 acres.

I hereby certify that the bearings of all lines recorded
in this retracement were determined by solar observations.



Feet

- N. 5° 08' E.
301.1 Angle point 7 from which
A cedar 10 ins. in diam., bears S. 87° W., 42.9 feet
distance, mkd. AP 7 RSL404 BT
A Douglas fir 10 ins. in diam., bears N. 42½° W., 20.8 feet
distance, mkd. AP 7 RSL404 BT
N. 72° 51' W.
259.8 Angle point 8 from which
A white fir 14 ins. in diam., bears N. 63° E., 30 feet
distance, mkd. AP 8 RSL404 BT
A cedar 14 ins. in diam., bears S. 36½° W., 8.6 feet
distance, mkd. AP 8 RSL404 BT
N. 0° 13' W.
180 Angle point 9 from which
A Douglas fir 24 ins. in diam., bears N. 18° E., 7 feet
distance, mkd. AP 9 RSL404 BT
A Douglas fir 16 ins. in diam., bears N. 18° W., 16 feet
distance, mkd. AP 9 RSL404 BT
N. 80° E.
375 Angle point 10 from which
A white fir 16 ins. in diam., bears N. 86° E., 15.3 feet
distance, mkd. AP 10 RSL404 BT
A Douglas fir 14 ins. in diam., bears S. 72½° E., 15.5 feet
distance, mkd. AP 10 RSL404 BT
N. 85° 33' E.,
297.7 Angle point 11 from which
A white fir 10 ins. in diam., bears N. 76° E., 5.4 feet
distance, mkd. AP 11 RSL404 BT
A white fir 14 ins. in diam., bears S. 14° W., 8.1 feet
distance mkd. AP 11 RSL404 BT
S. 64° 54' E.
548.4 Angle point 12 from which
A Douglas fir 28 ins. in diam., bears S. 60° E., 14 feet
distance, mkd. AP 12 RSL404 BT
A Douglas fir 22 ins. in diam., bears S. 18° W., 1.8 feet
distance, mkd. AP 12 RSL404 BT
S. 86° 22' E.
944.3 Angle point 13 from which
A cedar 12 ins. in diam., bears N. 83½° E., 29.7 feet
distance, mkd. AP 13 RSL404 BT
A Douglas fir 18 ins. in diam., bears S. 34° E., 49.4 feet
distance, mkd. AP 13 RSL404 BT

Feet

The angle points are monumented with 2 ins. angle irons.
Angle point 1 is on the section line bet. secs. 4 and 9.
The sec. cor. of secs. 3, 4, 9 and 10 bears N. $88^{\circ} 35'$ E.,
158 feet distance.

A white fir 16 ins. in diam., bears N. 68° E., 1.5 feet
distance mkd. AP 1 RS404 BT

A white fir 10 ins. in diam., bears N. 51° W., 5.3 feet
distance mkd. AP 1 RS404 BT

The geographic position of this angle point is latitude
 $42^{\circ} 22' 31''$ N. and longitude $122^{\circ} 27' 44''$ W.

October 8, 1963 at 2:30 P.M., I set off on the lat. arc
 $42^{\circ} 22\frac{1}{2}'$ and $5^{\circ} 51'$ on the declination arc of my
Gurley solar transit and determine a meridian with
the solar attachment. Backsight and foresight method
was used throughout this retracement.

S. $89^{\circ} 35'$ W.

317 Angle point 2 from which

A Douglas fir 18 ins. in diam., bears S. 7° E., 32.5 feet
distance, mkd. AP 2 RS404 BT

A Douglas fir 8 ins. in diam., bears S. $79\frac{1}{2}^{\circ}$ W., 22.7 feet
distance, mkd. AP 2 RS404 BT

N. 18° E.,

367.3 Angle point 3 from which

A Douglas fir 24 ins. in diam., bears East 8.6 feet
distance, mkd. AP 3 RS404 BT

A white fir 14 ins. in diam., bears S. 27° W., 2.5 feet
distance, mkd. AP 3 RS404 BT

North

205 Angle point 4 from which

A Douglas fir 12 ins. in diam., bears N. 61° E., 3.7 feet
distance, mkd. AP 4 RS404 BT

A Douglas fir 10 ins. in diam., bears S. 43° W., 13.5 feet
distance, mkd. AP 4 RS404 BT

N. $56^{\circ} 31'$ W.,

454.3 Angle point 5 from which

A yellow pine 14 ins. in diam., bears S. 45° W., 9.8 feet
distance, mkd. AP 5 RS404 BT

A cedar 8 ins. in diam., bears N. 18° W., 27.3 feet
distance, mkd. AP 5 RS404 BT

N. 42° W.,

523.6 Angle point 6 from which

A cedar 6 ins. in diam., bears S. 52° E., 3.7 feet
distance, mkd. AP 6 RS404 BT

A Douglas fir 14 ins. in diam., bears N. 34° W., 1 foot
distance, mkd. AP 6 RS404 BT

TOWNSHIP 37 SOUTH, RANGE 3 EAST, WILLAMETTE MERIDIAN, OREGON

METES AND BOUNDS SURVEY

IN

SECTIONS # 3 and 4

EXECUTED AT THE REQUEST OF J. H. BAXTER & CO.

OF

GRANTS PASS, OREGON

BY

L. E. Ager, December 1955

Retraced by Marvin C. Ramsey, October 1963

Assistants
Paul E. Jonas
Floyd H. Brock

Retracement commenced October 8, 1963

Retracement completed October 17, 1963