

**MAP OF SURVEY**

SURVEY FOR: JUNIPER PROPERTIES, LLC  
P.O. BOX 1127 ROSEBURG, OREGON 97470

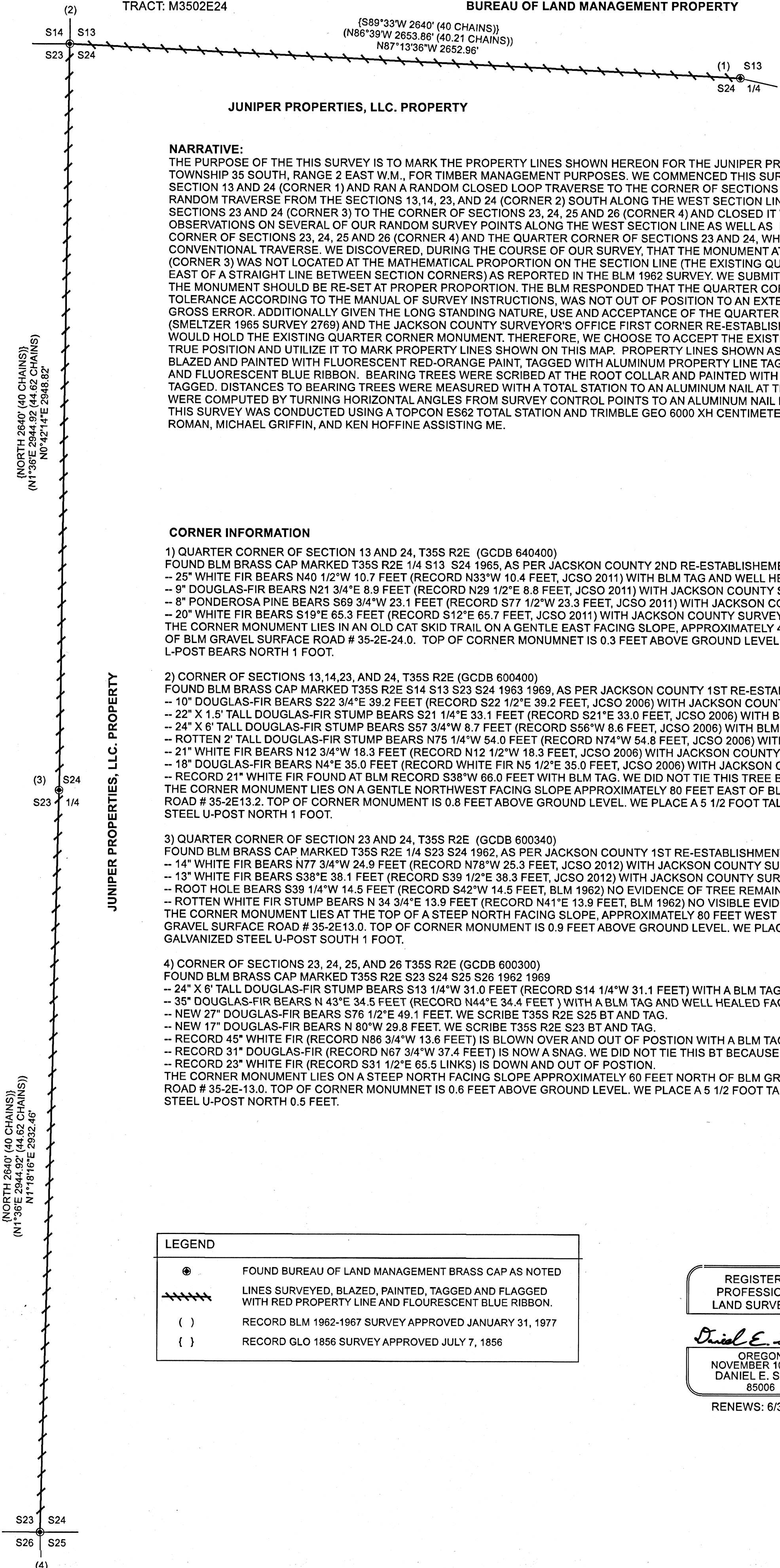
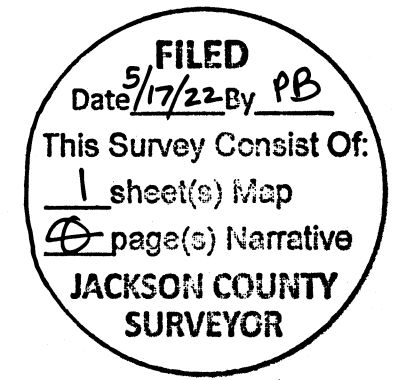
SURVEY BY: LONE ROCK TIMBER MANAGEMENT COMPANY  
P.O. BOX 1127 ROSEBURG, OREGON 97470

SOUTHWEST 1/4 AND NORTHWEST 1/4 OF SECTION 24, TOWNSHIP 35 SOUTH, RANGE 2 EAST W.M.,

DATE: MARCH 2022

TRACT: M3502E24

BUREAU OF LAND MANAGEMENT PROPERTY



**NARRATIVE:**

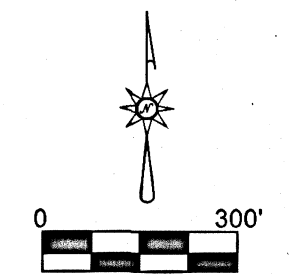
THE PURPOSE OF THIS SURVEY IS TO MARK THE PROPERTY LINES SHOWN HEREON FOR THE JUNIPER PROPERTIES FOREST LAND TRACT IN SECTION 24, TOWNSHIP 35 SOUTH, RANGE 2 EAST W.M., FOR TIMBER MANAGEMENT PURPOSES. WE COMMENCED THIS SURVEY AT THE QUARTER CORNER BETWEEN SECTION 13 AND 24 (CORNER 1) AND RAN A RANDOM CLOSED LOOP TRAVERSE TO THE CORNER OF SECTIONS 13, 14, 23, AND 24 (CORNER 2). WE THEN RAN A RANDOM TRAVERSE FROM THE SECTIONS 13, 14, 23, AND 24 (CORNER 2) SOUTH ALONG THE WEST SECTION LINE THROUGH THE FOUND QUARTER CORNER OF SECTIONS 23 AND 24 (CORNER 3) TO THE CORNER OF SECTIONS 23, 24, 25 AND 26 (CORNER 4) AND CLOSED IT WITH GPS. WE ALSO CONDUCTED GPS OBSERVATIONS ON SEVERAL OF OUR RANDOM SURVEY POINTS ALONG THE WEST SECTION LINE AS WELL AS DIRECT GPS OBSERVATIONS ON THE SECTION CORNER OF SECTIONS 23, 24, 25 AND 26 (CORNER 4) AND THE QUARTER CORNER OF SECTIONS 23 AND 24, WHICH ALL CHECKED VERY WELL WITH OUR CONVENTIONAL TRAVERSE. WE DISCOVERED, DURING THE COURSE OF OUR SURVEY, THAT THE MONUMENT AT THE QUARTER CORNER OF SECTION 23 AND 24 (CORNER 3) WAS NOT LOCATED AT THE MATHEMATICAL PROPORTION ON THE SECTION LINE (THE EXISTING QUARTER CORNER MONUMENT LIES 15.4 FEET EAST OF A STRAIGHT LINE BETWEEN SECTION CORNERS) AS REPORTED IN THE BLM 1962 SURVEY. WE SUBMITTED AN INQUIRY TO THE BLM TO DETERMINE IF THE MONUMENT SHOULD BE RE-SET AT PROPER PROPORTION. THE BLM RESPONDED THAT THE QUARTER CORNER MONUMENT, ALTHOUGH OUT OF TOLERANCE ACCORDING TO THE MANUAL OF SURVEY INSTRUCTIONS, WAS NOT OUT OF POSITION TO AN EXTENT TO BE DETERMINED AS FRAUDULENT OR IN GROSS ERROR. ADDITIONALLY GIVEN THE LONG STANDING NATURE, USE AND ACCEPTANCE OF THE QUARTER CORNER MONUMENT BY A PRIVATE SURVEYOR (SMELTZER 1965 SURVEY 2769) AND THE JACKSON COUNTY SURVEYOR'S OFFICE FIRST CORNER RE-ESTABLISHMENT (MARCH 21, 2012) THE BLM STATED THEY WOULD HOLD THE EXISTING QUARTER CORNER MONUMENT. THEREFORE, WE CHOOSE TO ACCEPT THE EXISTING QUARTER CORNER MONUMENT AS THE TRUE POSITION AND UTILIZE IT TO MARK PROPERTY LINES SHOWN ON THIS MAP. PROPERTY LINES SHOWN AS MARKED ON THIS MAP WERE QUARTER BLAZED AND PAINTED WITH FLUORESCENT RED-ORANGE PAINT, TAGGED WITH ALUMINUM PROPERTY LINE TAGS, AND FLAGGED WITH RED PROPERTY LINE AND FLUORESCENT BLUE RIBBON. BEARING TREES WERE SCRIBED AT THE ROOT COLLAR AND PAINTED WITH FLUORESCENT RED-ORANGE PAINT AND TAGGED. DISTANCES TO BEARING TREES WERE MEASURED WITH A TOTAL STATION TO AN ALUMINUM NAIL AT THE SIDE-CENTER OF THE TREE AND BEARINGS WERE COMPUTED BY TURNING HORIZONTAL ANGLES FROM SURVEY CONTROL POINTS TO AN ALUMINUM NAIL IN THE CENTER-FACE OF THE BEARING TREE. THIS SURVEY WAS CONDUCTED USING A TOPCON ES62 TOTAL STATION AND TRIMBLE GEO 6000 XH CENTIMETER GRADE GPS, WITH BRETT RAGON, IGNACIO ROMAN, MICHAEL GRIFFIN, AND KEN HOFFINE ASSISTING ME.

**CORNER INFORMATION**

- 1) QUARTER CORNER OF SECTION 13 AND 24, T35S R2E (GCDB 640400)  
FOUND BLM BRASS CAP MARKED T35S R2E 1/4 S13 S24 1965, AS PER JACKSON COUNTY 2ND RE-ESTABLISHMENT NOTE 2011  
-- 25" WHITE FIR BEARS N40 1/2°W 10.7 FEET (RECORD N33°W 10.4 FEET, JCSO 2011) WITH BLM TAG AND WELL HEALED FACE.  
-- 9" DOUGLAS-FIR BEARS N21 3/4°E 8.9 FEET (RECORD N29 1/2°E 8.8 FEET, JCSO 2011) WITH JACKSON COUNTY SURVEYOR TAG AND WELL HEALED FACE.  
-- 8" PONDEROSA PINE BEARS S69 3/4°W 23.1 FEET (RECORD S77 1/2°W 23.3 FEET, JCSO 2011) WITH JACKSON COUNTY SURVEYOR TAG AND WELL HEALED FACE.  
-- 20" WHITE FIR BEARS S19°E 65.3 FEET (RECORD S12°E 65.7 FEET, JCSO 2011) WITH JACKSON COUNTY SURVEYOR TAG AND WELL HEALED FACE.  
THE CORNER MONUMENT LIES IN AN OLD CAT SKID TRAIL ON A GENTLE EAST FACING SLOPE, APPROXIMATELY 450 FEET NORTH OF BLM GRAVEL SURFACE ROAD # 35-2E-24.0. TOP OF CORNER MONUMENT IS 0.3 FEET ABOVE GROUND LEVEL. AN ALUMINUM L-POST BEARS NORTH 1 FOOT.
- 2) CORNER OF SECTIONS 13, 14, 23, AND 24, T35S R2E (GCDB 600400)  
FOUND BLM BRASS CAP MARKED T35S R2E S14 S13 S23 S24 1963 1969, AS PER JACKSON COUNTY 1ST RE-ESTABLISHMENT NOTES 2006  
-- 10" DOUGLAS-FIR BEARS S22 3/4°E 39.2 FEET (RECORD S22 1/2°E 39.2 FEET, JCSO 2006) WITH JACKSON COUNTY SURVEYOR TAG AND WELL HEALED FACE.  
-- 22" X 1.5' TALL DOUGLAS-FIR STUMP BEARS S21 1/4°E 33.1 FEET (RECORD S21°E 33.0 FEET, JCSO 2006) WITH BLM TAG AND HEALED FACE.  
-- 24" X 6' TALL DOUGLAS-FIR STUMP BEARS S57 3/4°W 8.7 FEET (RECORD S56°W 8.6 FEET, JCSO 2006) WITH BLM TAG AND HEALED FACE.  
-- ROTTEN 2' TALL DOUGLAS-FIR STUMP BEARS N75 1/4°W 54.0 FEET (RECORD N74°W 54.8 FEET, JCSO 2006) WITH BLM TAG AND ROTTEN FACE.  
-- 21" WHITE FIR BEARS N12 3/4°W 18.3 FEET (RECORD N12 1/2°W 18.3 FEET, JCSO 2006) WITH JACKSON COUNTY SURVEYOR TAG AND WELL HEALED FACE.  
-- 18" DOUGLAS-FIR BEARS N4°E 35.0 FEET (RECORD WHITE FIR N5 1/2°E 35.0 FEET, JCSO 2006) WITH JACKSON COUNTY SURVEYOR TAG AND WELL HEALED DOUBLE SCARS.  
-- RECORD 21" WHITE FIR FOUND AT BLM RECORD S38°W 66.0 FEET WITH BLM TAG. WE DID NOT TIE THIS TREE BECAUSE IT IS BEHIND SEVERAL OTHER TREES.  
THE CORNER MONUMENT LIES ON A GENTLE NORTHWEST FACING SLOPE APPROXIMATELY 80 FEET EAST OF BLM GRAVEL SURFACE ROAD # 35-2E13.2. TOP OF CORNER MONUMENT IS 0.8 FEET ABOVE GROUND LEVEL. WE PLACE A 5 1/2 FOOT TALL GALVANIZED STEEL U-POST NORTH 1 FOOT.
- 3) QUARTER CORNER OF SECTION 23 AND 24, T35S R2E (GCDB 600340)  
FOUND BLM BRASS CAP MARKED T35S R2E 1/4 S23 S24 1962, AS PER JACKSON COUNTY 1ST RE-ESTABLISHMENT NOTES 2012  
-- 14" WHITE FIR BEARS N77 3/4°W 24.9 FEET (RECORD N78°W 25.3 FEET, JCSO 2012) WITH JACKSON COUNTY SURVEYOR TAG AND HEALED FACE.  
-- 13" WHITE FIR BEARS S38°E 38.1 FEET (RECORD S39 1/2°E 38.3 FEET, JCSO 2012) WITH JACKSON COUNTY SURVEYOR TAG AND HEALED FACE.  
-- ROOT HOLE BEARS S39 1/4°W 14.5 FEET (RECORD S42°W 14.5 FEET, BLM 1962) NO EVIDENCE OF TREE REMAINING.  
-- ROTTEN WHITE FIR STUMP BEARS N 34 3/4°E 13.9 FEET (RECORD N41°E 13.9 FEET, BLM 1962) NO VISIBLE EVIDENCE OF FACE OR TAG.  
THE CORNER MONUMENT LIES AT THE TOP OF A STEEP NORTH FACING SLOPE, APPROXIMATELY 80 FEET WEST OF EDGE OF BLM GRAVEL SURFACE ROAD # 35-2E13.0. TOP OF CORNER MONUMENT IS 0.9 FEET ABOVE GROUND LEVEL. WE PLACE A 5 1/2 FOOT TALL GALVANIZED STEEL U-POST SOUTH 1 FOOT.
- 4) CORNER OF SECTIONS 23, 24, 25, AND 26 T35S R2E (GCDB 600300)  
FOUND BLM BRASS CAP MARKED T35S R2E S23 S24 S25 S26 1962 1969  
-- 24" X 6' TALL DOUGLAS-FIR STUMP BEARS S13 1/4°W 31.0 FEET (RECORD S14 1/4°W 31.1 FEET) WITH A BLM TAG AND WELL HEALED FACE.  
-- 35" DOUGLAS-FIR BEARS N 43°E 34.5 FEET (RECORD N44°E 34.4 FEET) WITH A BLM TAG AND WELL HEALED FACE.  
-- NEW 27" DOUGLAS-FIR BEARS S76 1/2°E 49.1 FEET. WE SCRIBE T35S R2E S25 BT AND TAG.  
-- NEW 17" DOUGLAS-FIR BEARS N 80°W 29.8 FEET. WE SCRIBE T35S R2E S23 BT AND TAG.  
-- RECORD 45" WHITE FIR (RECORD N86 3/4°W 13.6 FEET) IS BLOWN OVER AND OUT OF POSITION WITH A BLM TAG AND WELL HEALED FACE.  
-- RECORD 31" DOUGLAS-FIR (RECORD N67 3/4°W 37.4 FEET) IS NOW A SNAG. WE DID NOT TIE THIS BT BECAUSE IT IS BEHIND THE ROOTWAD OF THE 45" WHITE FIR.  
-- RECORD 23" WHITE FIR (RECORD S31 1/2°E 65.5 LINKS) IS DOWN AND OUT OF POSITION.  
THE CORNER MONUMENT LIES ON A STEEP NORTH FACING SLOPE APPROXIMATELY 60 FEET NORTH OF BLM GRAVEL SURFACE ROAD # 35-2E-13.0. TOP OF CORNER MONUMENT IS 0.6 FEET ABOVE GROUND LEVEL. WE PLACE A 5 1/2 FOOT TALL GALVANIZED STEEL U-POST NORTH 0.5 FEET.

LEGEND	
⊙	FOUND BUREAU OF LAND MANAGEMENT BRASS CAP AS NOTED
	LINE SURVEYED, BLAZED, PAINTED, TAGGED AND FLAGGED WITH RED PROPERTY LINE AND FLOURESCENT BLUE RIBBON.
( )	RECORD BLM 1962-1967 SURVEY APPROVED JANUARY 31, 1977
{ }	RECORD GLO 1856 SURVEY APPROVED JULY 7, 1856

REGISTERED PROFESSIONAL LAND SURVEYOR  
*Daniel E. Saily*  
OREGON NOVEMBER 10, 2020 DANIEL E. SAILY 85006  
RENEWS: 6/30/2022



BASIS OF BEARING FROM GPS OBSERVATION  
OGRS ZONE: GRANTS PASS TO ASHLAND