

SURVEY NARRATIVE:

USING FOUND AND CALCULATED MONUMENTS AS SHOWN, I POSTED AND QUARTER BLAZED BOTH SIDES OF THE BOLD LINES SHOWN HEREON IN ORDER TO DELINEATE THE BOUNDARIES BETWEEN LANDS DESCRIBED IN DEED FOR TAX LOT 333W 900 (D.N. 1997-28032) AND TAX LOTS 300 & 1000 (USA), AND IN DEED FOR TAX LOT 333W 200 (D.N. SBTC) AND TAX LOTS 300 & 100 (USA).

A DILIGENT SEARCH WAS MADE FOR THE MONUMENT AT THE CLOSING CORNER OF SECTIONS 1 & 2 WITHOUT SUCCESS; THE AREA HAS BURNED IN THE PAST AND THEN WAS DISTURBED BY LOGGING EQUIPMENT. THIS CORNER WAS REESTABLISHED BY THE "IRREGULAR BOUNDARY ADJUSTMENT" METHOD PER SECTION 7-52 OF THE 2009 BLM MANUAL OF INSTRUCTIONS.

THIS SURVEY WAS CONDUCTED USING A TOPCON GTS 3003W TOTAL STATION AND TOPCON HIPER GPS RECEIVERS. THE FIELD SURVEY COMMENCED JANUARY 17, 2022 AND WAS COMPLETED MARCH 22, 2022.

THE BASIS OF BEARINGS FOR THIS SURVEY IS GEODETIC (NAD83), AT THE SOUTHWEST CORNER OF SECTION 2 SHOWN HEREON, BASED ON STATIC GPS OBSERVATIONS TO CONTINUOUSLY OPERATING REFERENCE STATIONS (EPOCH 2011).

ALL FIELD BEARINGS AND DISTANCES TO BEARING TREES ARE TO THE CENTER OF THE TREE AT THE GROUND.

STANDARD 1/4 CORNER OF SECTION 35, T.32S. R.3W.: FOUND A 2 1/2" O.D. GIP WITH 3 1/4" BLM BC STAMPED "SC T32S R3W 1/4 S35 1975", 8" ABOVE GROUND, PER R5, FROM WHICH BEARS:

34" DF WITH HB N50°E 27.4' F=R5.
32" DF WITH HB N83°W 53.8' F=R5.

ANGLE POINT ON S LINE OF SECTION 35, T.32S. R.3W.:
FOUND A 2.5" O.D. GIP WITH 3 1/4" BLM BC STAMPED "AP 1 T32S R3W S35 1975", 8" ABOVE GROUND, PER R5, FROM WHICH BEARS:

24" DF WITH HB N46°W 13.9' F=R5.

CLOSING CORNER OF SECTIONS 2 & 1, T.33S., R.3W., SEE NARRATIVE: SET MONUMENT AS DESCRIBED IN LEGEND, FROM WHICH BEARS:

10" DF SCRIBED "XBT" THIS SURVEY S5°W 14.2'.
14" DF SCRIBED "XBT" THIS SURVEY S41°E 20.2'.

1/4 CORNER OF SECTIONS 2 & 1, T.33S. R.3W.:
FOUND A 2 1/2" O.D. GIP WITH 3 1/4" BLM BC STAMPED "T33S, R3W, 1/4 S2 S1 1968", 3" ABOVE GROUND, PER R4, FROM WHICH BEARS:

42" DF D&D, BLAZE UNDERNEATH, S32°W 40.9' F=R4.
5" WF SCRIBED XBT THIS SURVEY S17 1/4°W 32.0'.
12" DF SCRIBED XBT THIS SURVEY S18 1/4°E 31.8'.

CORNER OF SECTIONS 2,1, 11, & 12, T.33S. R.3W.:
FOUND 2 1/2" O.D. GIP WITH 3 1/4" BLM BC STAMPED "T33S R3W S2 S1 S11 S12 1958", 8" ABOVE GROUND, PER R7, FROM WHICH BEARS:

42" DF WITH HB S76°W 71.2' F=R7.
8" WF WITH HB N35 1/2°W 11.6' F=R7.
23" WF WITH HB N61 1/2°E 30.1' F=R7.
13" WF WITH HB S80 1/4° E 30.75' F (R7=S8 1/2°E 30.6').
35" DF SNAG WITH VS N22°E 8.8 F=R7.
STUMP HOLE N61 1/4°W 27.0' (R7=N68°W 27.4').
36" FIR STUMP S23°E 39.0' F=R7.

SILVER BUTTE
TIMBER COMPANY
D.N. 97-08347
T.L. 1100

REFERENCES:

- R1 = BLM SURVEY BY AANRUD AND JELLEY COMPLETED APRIL 30, 1969
- R2 = BLM RESURVEY BY LUNDEEN COMPLETED NOVEMBER 15, 2018
- R3 = CS FIRST REESTABLISHMENT OF THE 1/4 CORNER OF SECTIONS 9 AND 10 T.33S., R.3W., W.M.
- R4 = BLM SURVEY BY JELLEY COMPLETED APRIL 17, 1968
- R5 = BLM SURVEY BY ROSEBERRY COMPLETED OCTOBER 1, 1975
- R6 = CS FIRST REESTABLISHMENT OF THE 1/4 CORNER OF SECTIONS 10 AND 11, T.33S., R.3W., W.M.
- R7 = CS FIRST REESTABLISHMENT OF THE SE CORNER OF SECTION 2, T.36S., R.3E., W.M.
- R8 = GENERAL LAND OFFICE PLAT FOR T.33S., R.3W., W.M., APPROVED MARCH 31, 1885
- R9 = C.S. 21194

LEGEND OF SYMBOLS & ABBREVIATIONS:

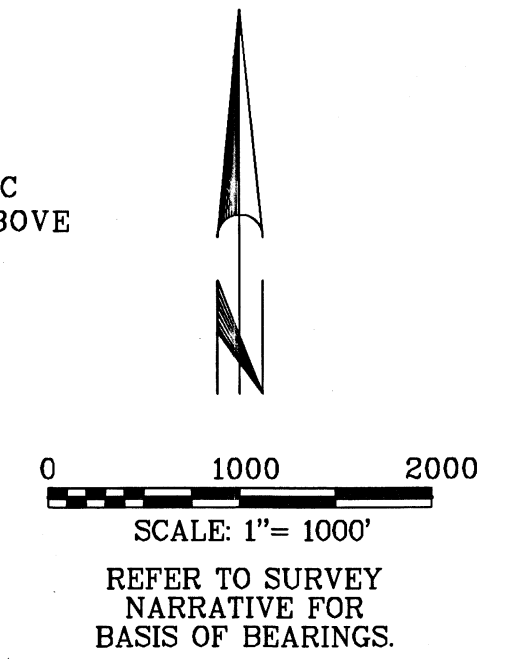
- FOUND MONUMENT AS DESCRIBED.
- ⊙ SET 5/8" REBAR, 30" LONG, 29" IN THE GROUND, WITH 2 1/2" AC STAMPED "T33S R3W S2 S1 T32S R3W S35 PLS 77662".
- AC ALUMINUM CAP
- BC BRASS CAP
- HEM HEMLOCK
- D&D DEAD & DOWN
- DF DOUGLAS FIR
- D.N. DOCUMENT NUMBER
- F FIELD MEASUREMENT
- GIP GALVANIZED IRON PIPE
- BLM BUREAU OF LAND MANAGEMENT
- T.L. TAX LOT
- HB HEALED BLAZE
- TO TAN OAK
- YP YELLOW PINE
- MD MADRONE
- MOS MOUND OF STONE
- O.D. OUTSIDE DIAMETER
- VS VISIBLE SCRIBING
- WF WHITE FIR
- () RECORD DATA

REGISTERED
PROFESSIONAL
LAND SURVEYOR

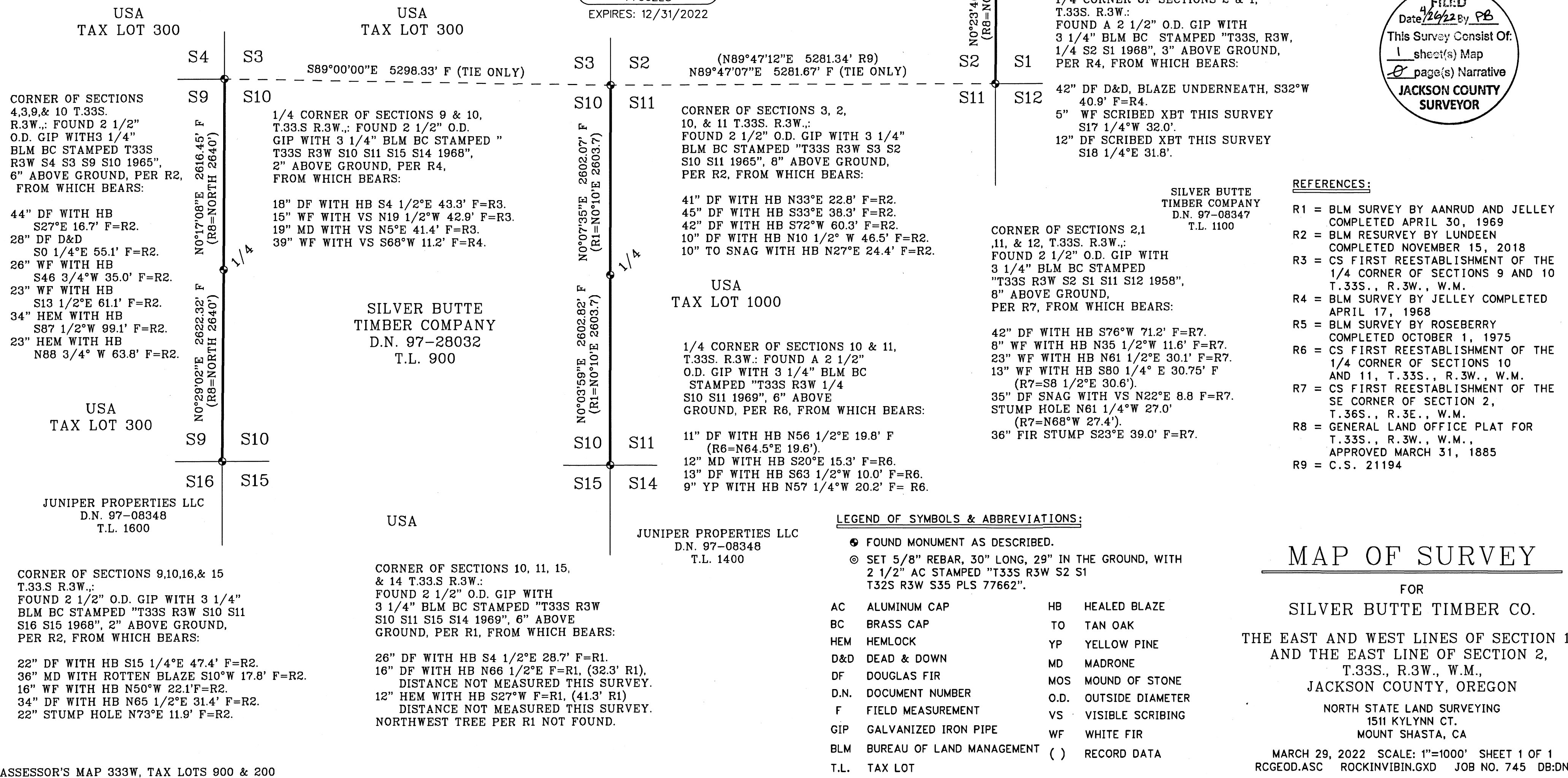
Gregg Arnold Neitsch

OREGON
JULY 11, 2006
GREGG ARNOLD NEITSCH
77662LS
EXPIRES: 12/31/2022

SILVER BUTTE
TIMBER COMPANY
D.N. 97-021819
T.L. 200



FILED
Date 4/26/22 By PB
This Survey Consist Of:
1 sheet(s) Map
2 page(s) Narrative
JACKSON COUNTY
SURVEYOR



MAP OF SURVEY

FOR
SILVER BUTTE TIMBER CO.
THE EAST AND WEST LINES OF SECTION 10,
AND THE EAST LINE OF SECTION 2,
T.33S., R.3W., W.M.,
JACKSON COUNTY, OREGON

NORTH STATE LAND SURVEYING
1511 KYLYNN CT.
MOUNT SHASTA, CA

MARCH 29, 2022 SCALE: 1"=1000' SHEET 1 OF 1
RCGEOD.ASC ROCKINVIBIN.GXD JOB NO. 745 DB:DN