

TOWNSHIP 36 SOUTH, RANGE 3 EAST, W.M.

CORNER OF SECTIONS 29, 30, 31, & 32, T.36S. R.3E.: FOUND A 1" I.D. GIP WITH 2 1/2" BC STAMPED "T36S R3E 29 30 31 32 C.S. 1973", 12" ABOVE GROUND, PER R6. BEARING TREES AND OBJECTS NOT TIED THIS SURVEY.

REFERENCES:

- R1 = CS 8886
R2 = CS 21779
R3 = CS 23550
R4 = GLO PLAT FOR T.36S., R.3E., W.M., APPROVED APRIL 10, 1884.
R5 = CS SECOND REESTABLISHMENT OF THE NORTHEAST CORNER OF SEC. 32, T.36S., R.3E., W.M.
R6 = CS FIRST REESTABLISHMENT OF THE NORTHWEST CORNER OF SEC. 32, T.36S., R.3E., W.M.
R7 = CS THIRD REESTABLISHMENT OF THE 1/4 CORNER OF SECTIONS 31 & 32, T.36S., R.3E., W.M.
R8 = CS FIRST REESTABLISHMENT OF THE 1/4 CORNER OF SECTIONS 32 & 33, T.36S., R.3E., W.M.

CORNER OF SECTIONS 31 & 32, T.36S., R.3E. AND SECTIONS 5 & 6, T.37S., R.3E.: FOUND BLM 2 1/2" O.D. GIP WITH 3 1/4" BC STAMPED "T36S R3E S31 S32 S5 S6 T37S 1961", 14" ABOVE GROUND, IN A 2 1/2" MOS, PER R2, FROM WHICH BEARS:

10" DF WITH HB N32°E 4.1' F=R2.
19" WF SNAG WITH HB S36°E 46.9' F (S34°E R2).
16" WF SNAG WITH HB S58°W 12.5' F=R2.
12" DF WITH HB N36°W 29.1' F (N32°W R2).

1/4 CORNER OF SECTION 31, T.36S., R.3E. AND SECTION 6, T.37S., R.3E.: FOUND BLM 2 1/2" O.D. GIP WITH 3 1/4" BC STAMPED "T36S R3E 1/4 S31 S6 T37S 1961", 10" ABOVE GROUND, PER R2, FROM WHICH BEARS:

25" WF SNAG WITH HB N76°E 18.9' F=R2, (DF = R2).
23" WF SNAG WITH HB S63°W 11.9' F=R2, (DF = R2).

1/4 CORNER OF SECTION 32, T.36S., R.3E. AND SECTION 5, T.37S., R.3E.: FOUND NO EVIDENCE OF THE ORIGINAL GLO CORNER DURING A DILIGENT SEARCH. SET MONUMENT AT SINGLE PROPORTION POSITION IN A FOUND 2" MOS. POSITION FALLS IN EAST-WEST BLAZED LINE WITH BLM BOUNDARY TAG NEARBY, FROM WHICH BEARS:

22" WF SCRIBED "XBT" THIS SURVEY N17 1/4°E 32.8'.
12" WF SCRIBED "XBT" THIS SURVEY S61°W 20.1'.
80D NAIL OF UNKNOWN ORIGIN N63°W 0.3'.

CORNER OF SECTIONS 32 & 33, T.36S., R.3E. AND SECTIONS 4 & 5, T.37S., R.3E.: FOUND BLM 2 1/2" O.D. GIP WITH 3 1/4" BC STAMPED "T36S R3E S32 S33 S4 S5 S6 T37S 1961", 12" ABOVE GROUND, PER R1, FROM WHICH BEARS:

28" DF WITH HB N47 1/2°E 12.8' F=R1.
25" DF WITH HB S77 3/4°E 31.0' F=R1.
26" DF WITH HB S59 3/4°E 19.9' F=R1.
18" DF WITH HB N40 1/4°E 23.0' F (23.8' R1).

CORNER OF SECTIONS 28, 29, 32, & 33, T.36S. R.3E.: FOUND A 2 1/2" O.D. GIP WITH 3 1/4" BC STAMPED "JACKSON COUNTY SURVEYOR T36S R3E S28 S29 S32 S33 2005", 8" ABOVE GROUND, IN A 2" STONE COLLAR, PER R5, FROM WHICH BEARS:

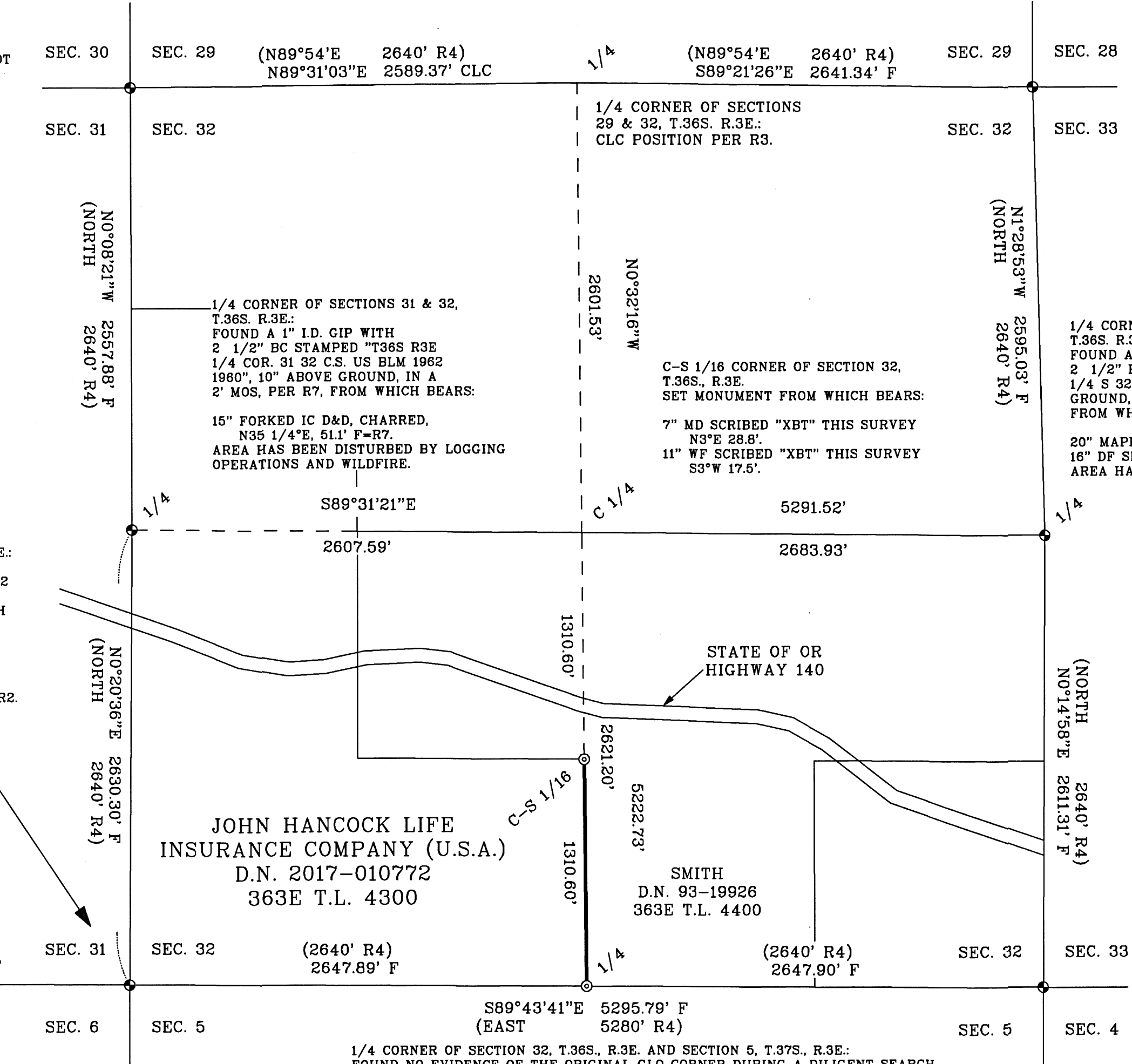
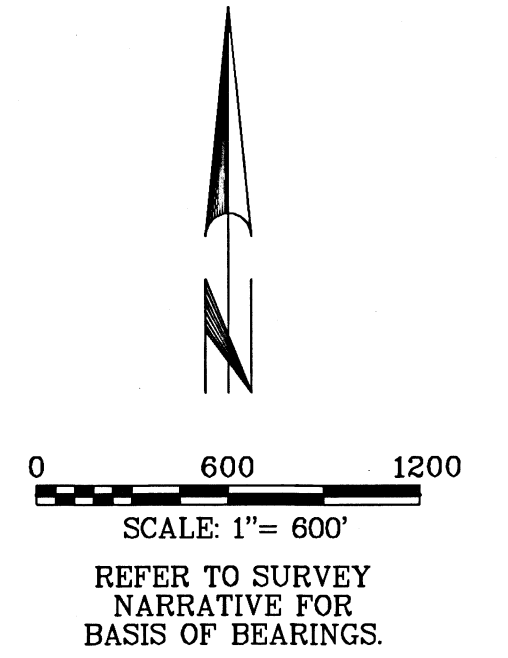
STUMP HOLE N32°E 21.7' F=R5.
36" DF WITH HB S71°W 21.1' F=R5.
15" WF WITH HB N13°E 51.9' F=R5.
10" IC WITH VS N41°E 31.2' OF UNKNOWN ORIGIN.

1/4 CORNER OF SECTIONS 32 & 33, T.36S. R.3E.: FOUND A 1" I.D. GIP WITH 2 1/2" BC STAMPED "T36S R3E 1/4 S 32 33 C.S. 1973", 10" ABOVE GROUND, IN A 2" MOS, PER R8, FROM WHICH BEARS:

20" MAPLE SNAG S72°E 51.6' F=R8.
16" DF SNAG S56°W 10.2' F=R8.
AREA HAS BEEN DISTURBED BY WILDFIRE.

LEGEND OF SYMBOLS & ABBREVIATIONS:

- FOUND MONUMENT AS DESCRIBED.
SET 5/8" REBAR, 30" LONG, 24" IN THE GROUND, WITH 2 1/2" AC STAMPED PER BLM 2009 MANUAL OF INSTRUCTIONS AND "PLS 77662".
AC ALUMINUM CAP
BC BRASS CAP
BO BLACK OAK
CLC CALCULATED
D&D DEAD & DOWN
DF DOUGLAS FIR
D.N. DOCUMENT NUMBER
F FIELD MEASUREMENT
GIP GALVANIZED IRON PIPE
GLO GENERAL LAND OFFICE
HB HEALED BLAZE
IC INCENSE CEDAR
I.D. INSIDE DIAMETER
MD MADRONE
MOS MOUND OF STONE
O.D. OUTSIDE DIAMETER
VS VISIBLE SCRIBING
WF WHITE FIR
() RECORD DATA



TOWNSHIP 37 SOUTH, RANGE 3 EAST, W.M.

U.S.A. 373E T.L. 1500

SURVEY NARRATIVE:

THE PURPOSE OF THIS SURVEY IS TO POST AND BLAZE THE LINES SHOWN IN BOLD HEREON. LINE TREES AND TREES ON BOTH SIDES OF THE BOLD LINES WERE QUARTER-BLAZED THIS SURVEY.

USING FOUND AND CALCULATED MONUMENTS AS SHOWN, I SUBDIVIDED SECTION 32 PER THE BLM 2009 MANUAL OF INSTRUCTIONS IN ORDER TO DELINEATE THE BOUNDARIES BETWEEN LANDS DESCRIBED IN DEEDS FOR TAX LOTS 363E 4300 & 4400 (D.N. 2017-010772 & D.N. 93-19926). ALSO, USING THE FOUND MONUMENTS AS SHOWN, I MARKED A PORTION OF THE N-S CENTERLINE OF SECTION 6, T.37S., R.3E., IN ORDER TO DELINEATE THE BOUNDARY BETWEEN LANDS DESCRIBED IN DEED FOR TAX LOTS 373E 1600 & 1700 (D.N. 2017-010772) AND TAX LOT 373E 1500 (U.S.A.).

THIS SURVEY WAS CONDUCTED USING A TOPCON GTS 3003W TOTAL STATION AND TOPCON HIPER GPS RECEIVERS. THE FIELD SURVEY COMMENCED JULY 13, 2021 AND WAS COMPLETED DECEMBER 10, 2021.

THE BASIS OF BEARINGS FOR THIS SURVEY IS GEODETIC (NAD83), AT THE SOUTHWEST CORNER OF SECTION 32 SHOWN HEREON, BASED ON STATIC GPS OBSERVATIONS TO CONTINUOUSLY OPERATING REFERENCE STATIONS (EPOCH 2011).

ALL FIELD BEARINGS AND DISTANCES TO BEARING TREES ARE TO THE CENTER OF THE TREE AT THE GROUND.

JOHN HANCOCK LIFE INSURANCE COMPANY (U.S.A.) D.N. 2017-010772 373E T.L. 1600 & 1700

1/4 CORNER OF SECTIONS 6 & 7, T.37S., R.3E.: FOUND A 1" I.D. GIP WITH 2 1/2" BC STAMPED "T37S R3E 1/4 S 6 7 CS 1988, 6" ABOVE GROUND, IN A 2" MOS, PER R2, FROM WHICH BEARS:

6" BO WITH HB S25°E 19.6' F, (S22°E 19.9' R2).
8" BO WITH HB N70°W 12.3' F=R2.

REGISTERED PROFESSIONAL LAND SURVEYOR

OREGON JULY 11, 2006 GREGG ARNOLD NEITSCHE 77662LS EXPIRES: 12/31/2022

MAP OF SURVEY

FOR HANCOCK FOREST MANAGEMENT THE EAST LINE OF THE SE1/4 OF THE SW 1/4 OF SECTION 32, T.36S., R.3E., AND A PORTION OF THE N-S CENTERLINE OF SECTION 6, T.37S., R.3E., W.M., JACKSON COUNTY, OREGON

NORTH STATE LAND SURVEYING 1511 KYLYNN CT. MOUNT SHASTA, CA

JANUARY 24, 2022 SCALE: 1"=600' SHEET 1 OF 1 HEPMPMAP.ASC HEPPMOS.GXD JOB NO. 707

FILED Date 2/22 By PB This Survey Consist Of: 1 sheet(s) Map 0 page(s) Narrative JACKSON COUNTY SURVEYOR