

NARRATIVE (in accordance with ORS 209.250)

DATE
12-03-2021

PURPOSE:
The purpose of this survey is to provide survey monument recovery information and establish geodetic control on a PLSS corner to serve as an accessory thereto in accordance with ORS 209.130 (3) as no practical natural accessories exist within limits.

PROCEDURE:
Static GPS positioning of the survey monuments (1000, 1001, 1002) was performed utilizing two Trimble R8 receivers and ORGN CORS stations "ASHL", "CTPT" and Jackson County Surveyor's CORS station "NETRS". The CORS stations were held as control and a fully constrained adjustment was performed on the resulting baselines to the survey monuments. All data was collected using a Trimble TSC3 data collector and GPS baseline processing was performed with Trimble Business Center version 5.51. As a quality assurance/quality control check the GPS RINEX file for survey monument No. 1001 was sent to the National Geodetic Survey (NGS) Online Positioning User Service (OPUS) for independent processing and the results compared favorably with the CORS generated position (see No. 2001 in table below).

HORIZONTAL DATUM
NAD 83 (2011) (EPOCH: 2010)
Units = International Feet

MAP PROJECTION
OCRS Grants Pass-Ashland Zone per ORS 93 and OAR 734.

VERTICAL DATUM
NAVD 88 (Geoid 12A CONUS)
(Elevations shown are GPS derived orthometric heights)

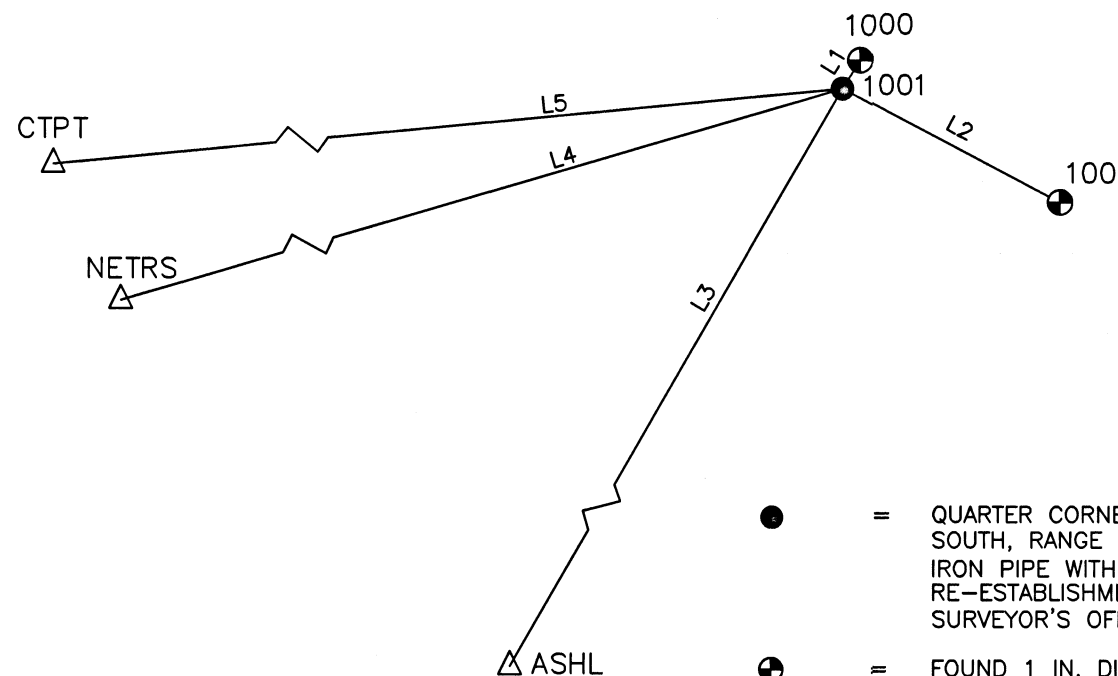
BASIS OF BEARINGS:
Grid North (Meridian convergence angle = 0°33'59" at point No.1001)

SURVEY FOR:
Jackson County Surveyor's Office
10 S. Oakdale Ave Room 318
Medford, OR 97501

Monument Recovery and Geodetic Control Survey

Located in Sections 29 and 32, T36S R3E, W.M.
Jackson County, Oregon

LINE	BEARING	DISTANCE
L1	N 31°57'44" E	8.75'
L2	S 62°10'41" E	64.06'
L3	S 29°57'44" W	94221.65'
L4	S 73°33'32" W	108005.84'
L5	S 84°24'18" W	108603.90'

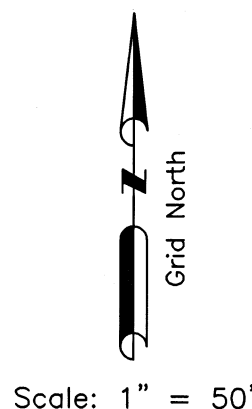


LEGEND

- = QUARTER CORNER COMMON TO SECTIONS 29 AND 32, TOWNSHIP 36 SOUTH, RANGE 3 EAST, W.M. - FOUND 1 X 36 INS. GALVANIZED IRON PIPE WITH 2 1/2 INS. DIAMETER BRASS CAP PER SECOND RE-ESTABLISHMENT DATED 2021 BY THE JACKSON COUNTY SURVEYOR'S OFFICE
- ⊙ = FOUND 1 IN. DIAMETER BRASS CAP MARKED "CS" FLUSH IN ROCK OUTCROPPING PER SECOND RE-ESTABLISHMENT DATED 2021
- △ = CORS (ORGN OR JCS)
- ORGN = OREGON REAL-TIME GPS NETWORK
- CORS = CONTINUOUSLY OPERATING REFERENCE STATION
- OCRS = OREGON COORDINATE REFERENCE SYSTEM
- ORS = OREGON REVISED STATUTES
- RINEX = RECEIVER INDEPENDENT EXCHANGE FORMAT
- JCS = JACKSON COUNTY SURVEYOR'S OFFICE
- PLSS = PUBLIC LAND SURVEY SYSTEM
- OAR = OREGON ADMINISTRATIVE RULES

NAD 83 (2011) (EPOCH: 2010)				OCRS GRANTS PASS -ASHLAND				95% CONFIDENCE REGIONS			
PT. #	LATITUDE	LONGITUDE	HEIGHT	NORTHING	EASTING	ELEVATION	DESCRIPTION	SEMI-MAJ.	SEMI-MIN.	ORIENT.	HEIGHT
1000	N 42°24'12.70561"	W 122°29'36.88826"	3664.29	239289.42	390866.47	3741.49	SEE LEGEND	0.015	0.014	168°	0.025
1001	N 42°24'12.63276"	W 122°29'36.95095"	3658.01	239281.99	390861.84	3735.22	SEE LEGEND	0.014	0.013	160°	0.025
1002	N 42°24'12.33193"	W 122°29'36.19985"	3675.64	239252.10	390918.50	3752.84	SEE LEGEND	0.015	0.015	71°	0.025
ASHL	N 42°10'50.47299"	W 122°40'12.55241"	1998.53	157652.58	343804.87	2076.53	ORGN CORS STA. "ASHL"	-	-	-	-
CTPT	N 42°22'36.08473"	W 122°53'38.19500"	1217.10	228693.68	282775.32	1296.86	ORGN CORS STA. "CTPT"	-	-	-	-
NETRS	N 42°19'18.49409"	W 122°52'39.71414"	1378.75	208713.34	282722.18	1458.19	JCS CORS STA. "NETRS"	-	-	-	-

NAD 83 (2011) (EPOCH: 2010)				OCRS GRANTS PASS -ASHLAND				95% CONFIDENCE REGIONS		
PT. #	LATITUDE	LONGITUDE	HEIGHT	NORTHING	EASTING	ELEVATION	DESCRIPTION	LATITUDE	LONGITUDE	HEIGHT
2001	N 42°24'12.63308"	W 122°29'36.95096"	3657.81	239282.02	390861.84	3735.01	CP 1001 OPUS SOLUTION	0.091	0.059	0.131



FILED
Date 1/10/22 By SDF
This survey consists of:
1 sheet(s) Map
0 page(s) Narrative
JACKSON COUNTY SURVEYOR

REGISTERED PROFESSIONAL LAND SURVEYOR

Scott Fein
OREGON NOVEMBER 10, 2010 SCOTT D. FEIN 83181 Expires 12/31/2023

Jackson County Surveyor
Scott Fein, PLS, CWRE
10 S. Oakdale Ave., Medford, OR 97501 (541) 774-6191

Fieldwork: 11/23/21	Reviewed By: SDF 1/10/22
Field Crew: OR, JH	CS Job File: N.A.
Drawn By: OR 12/03/21	Approved: SDF 1/11/22
sv-base_t36sr3e quarter cor 29,32 geodetic survey.dwg	