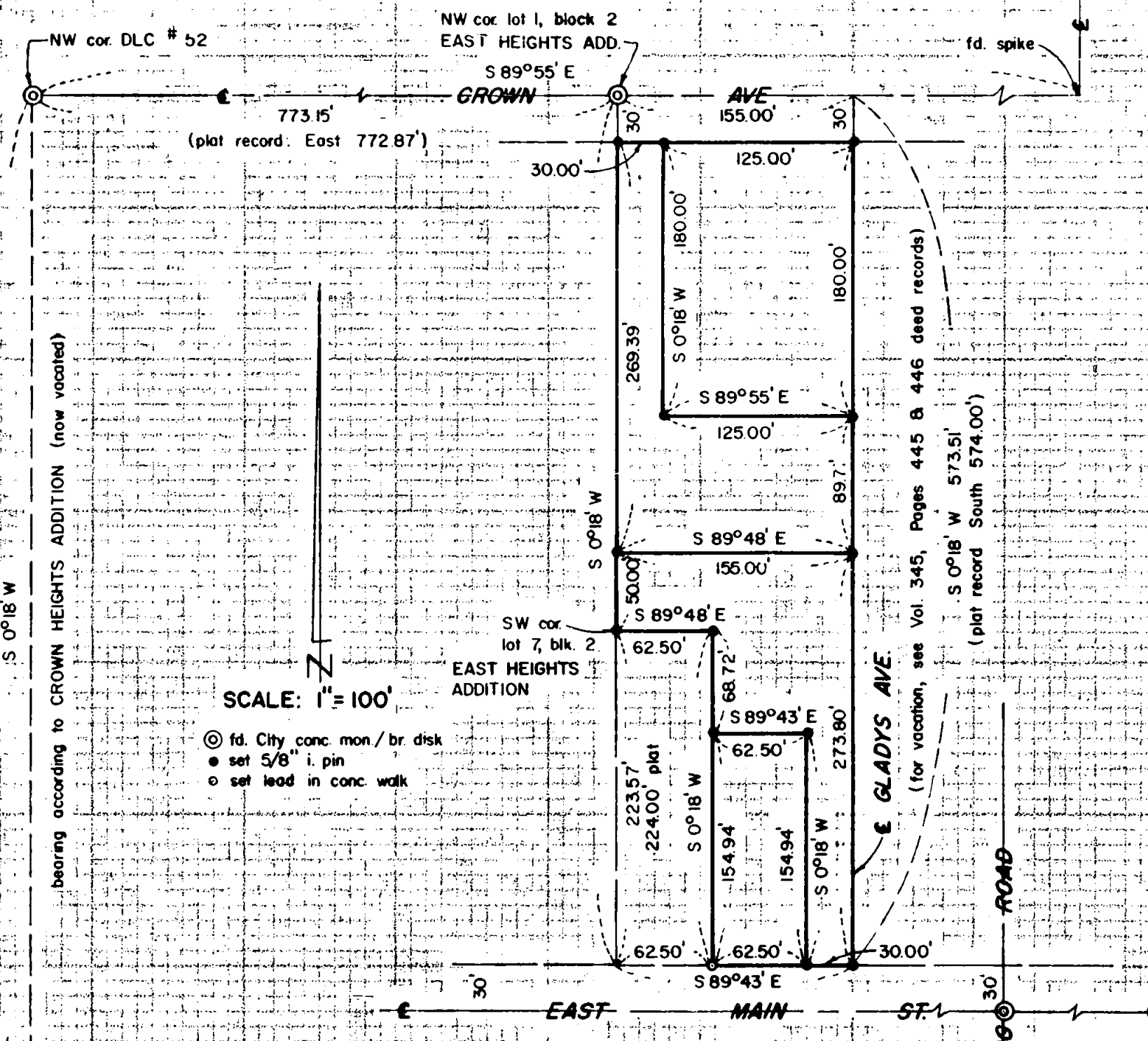


Survey For:
HARRY MARSHALL
 Located in Lots 1-11, Block 2
 and the West-Half of
 Vacated Gladys Avenue
 in EAST HEIGHTS ADDITION (Recorded)
 NW 1/4 of Sec. 29, T37SRIW, W.M.
 Medford, Oregon
 By: Mark E. Boyden
 Nov. 1963



RECEIVED
 JACKSON
 NOV 13 1963
 CLATSOP COUNTY
 SURVEYOR

REGISTERED
 OREGON
 LAND SURVEYOR
Mark E. Boyden
 NOVEMBER 9 1963
 MARK E. BOYDEN
 281

SURVEY NARRATIVE TO COMPLY WITH O.R.S. 209.250

FOR: Harry Marshall
246 East Tenth Street
Medford, Oregon

PURPOSE: To monument and describe in four parcels, that portion of Block 2 and the West half of vacated Gladys Avenue in EAST HEIGHTS ADDITION to Medford, Oregon described in Jackson County Title Co. Policy numbers J-48498 and 79928.

PROCEDURE:

Found concrete monuments with bronze disk set by the City of Medford Engineering Department for centerline control of Crown Avenue and East Main Street.

The original stone monument located at the Northwest corner of Lot 1, Block 2 of EAST HEIGHTS ADDITION was re-monumented with a concrete monument, when Crown Avenue was paved.

Established the plat boundaries plat record distance East from the Northwest corner of Lot 1, Block 2 and parallel with the West boundary of DLC #52 according to CROWN HEIGHTS ADDITION (now vacated).

Set tract corner monuments as shown.

Basis of Bearings: CROWN HEIGHTS ADDITION (now vacated).

November 1963

