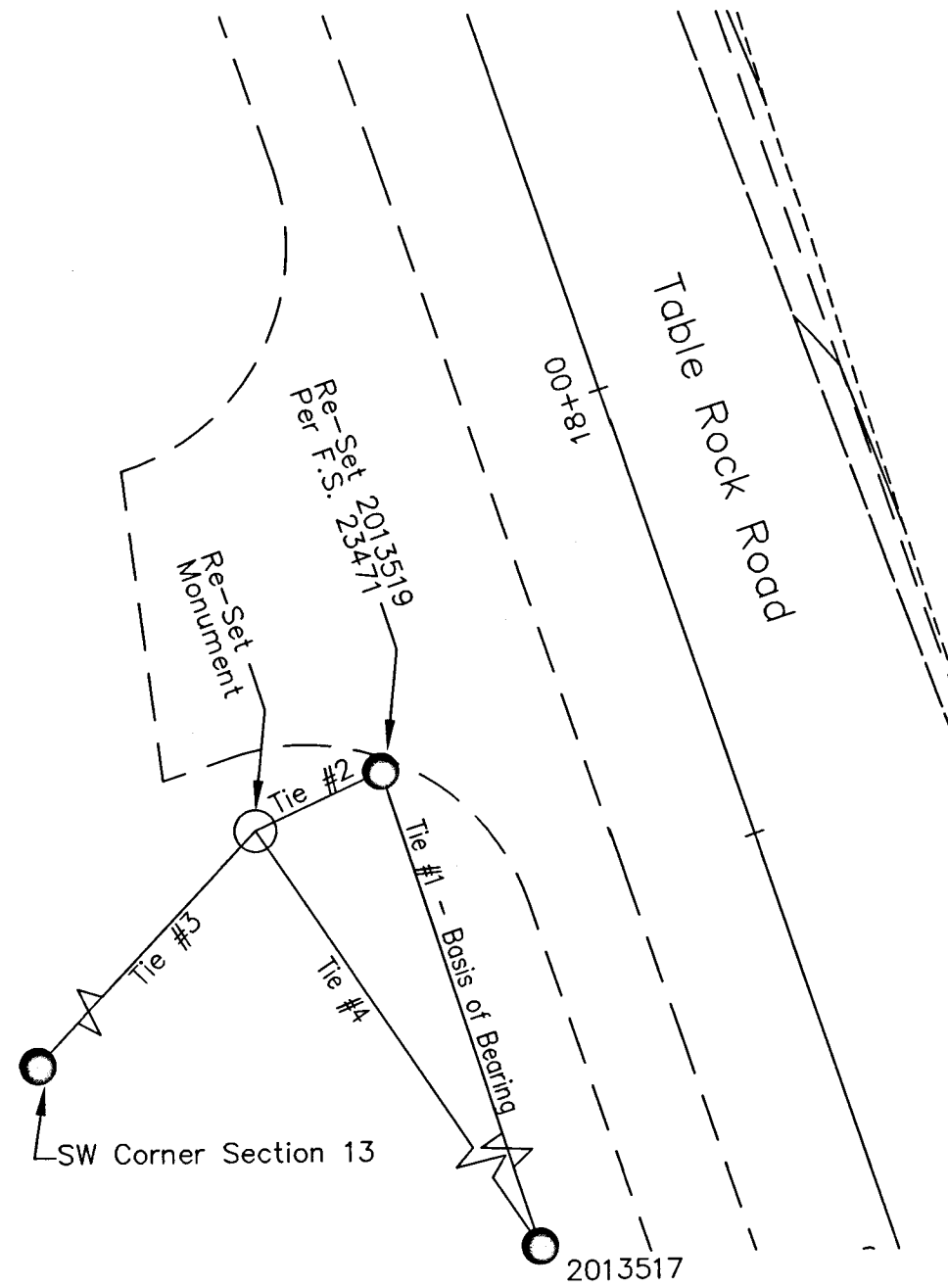


Map of Survey

Located in:
SW 1/4 Section 13, Township 36 South, Range 2 West,
Willamette Meridian, Jackson County, Oregon

**** RECEIVED ****
DATE 12-22-21 BY JH
This survey consists of:
1 sheet(s) Map
0 page(s) Narrative
JACKSON COUNTY
SURVEYOR



Monument Ties:

- Tie #1 = ODOT Control Point 2013517 bears S18°05'43"E, 812.43'
- Tie #2 = ODOT Control Point 2013519 (reset) bears N65°02'38"E, 14.81'
- Tie #3 = SW Corner Section 13 bears S43°19'29"E, 1980.22'
- Tie #4 = ODOT Control Point 2013517 bears S19°08'05"E, 810.80'

SURVEY NARRATIVE TO COMPLY WITH ORS209.250

PURPOSE:

To re-monument that monument of record, a 5/8" rebar set per filed survey 9611, of which was destroyed during a recent roadway improvement project.

PROCEDURE:

Utilizing survey control provided and further established during this roadway improvement project, as well as ties to the destroyed monument prior to its removal, we re-set a rebar in the same location as the destroyed monument. The reset monument does not necessarily represent a boundary monument.

The re-set monument is a 5/8" rebar with cap marked "PARIANI PLS 51382" and falls 1'± east of the new fencing to the Medford Water Commission Facility along Table Rock Road.

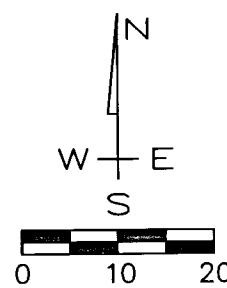
Monument was set on December 6, 2021.

Basis of bearing is between the ODOT control point 2013519 (re-set) and ODOT control point 2013517.

SURVEY FOR:
Medford Water Commission

EQUIPMENT USED:
Trimble R10, GPS RTK.

2013519: Found 5/8" Rebar w/Aluminum Cap "PARIANI PLS 51382" per F.S. 23471.
2013517: Found 1" Copper Plug "ODOT CONTROL 20135-17" per FS22862.
SW Corner Section 13: Found 2.5" Brass Disk per Ja. Co. 3rd Re-Estab "T36S R2W 14/13/23/24 CS 1990"



REGISTERED PROFESSIONAL LAND SURVEYOR
John R. Pariani
OREGON
July 13, 1999
JOHN R. PARIANI
#51382
Renews: December 31, 2022

Pariani Land Surveying

17 South Platt Avenue, Suite C
Eagle Point, Oregon 97524
541-890-1131 ParianiLS@yahoo.com

| | | | |
|----------------------------|--------------------|----------------------|------------------|
| Date: December 22, 2021 | Scale: 1" = 20' | Job No.: 2021-577 | Sheet: 1 of 1 |
|----------------------------|--------------------|----------------------|------------------|

362W13c