

SW 1/4 SEC 19 T36S R4W W.M. SE 1/4 SEC 19 T36S R4W W.M.  
 SW 1/4 SEC 20 T36S R4W W.M. SE 1/4 SEC 20 T36S R4W W.M.

\*\* RECEIVED \*\*  
 DATE 12/8/21 BY PB  
 This survey consists of:  
 1 sheet(s) Map  
 0 page(s) Narrative  
 JACKSON COUNTY SURVEYOR

**CONTROL INFORMATION**

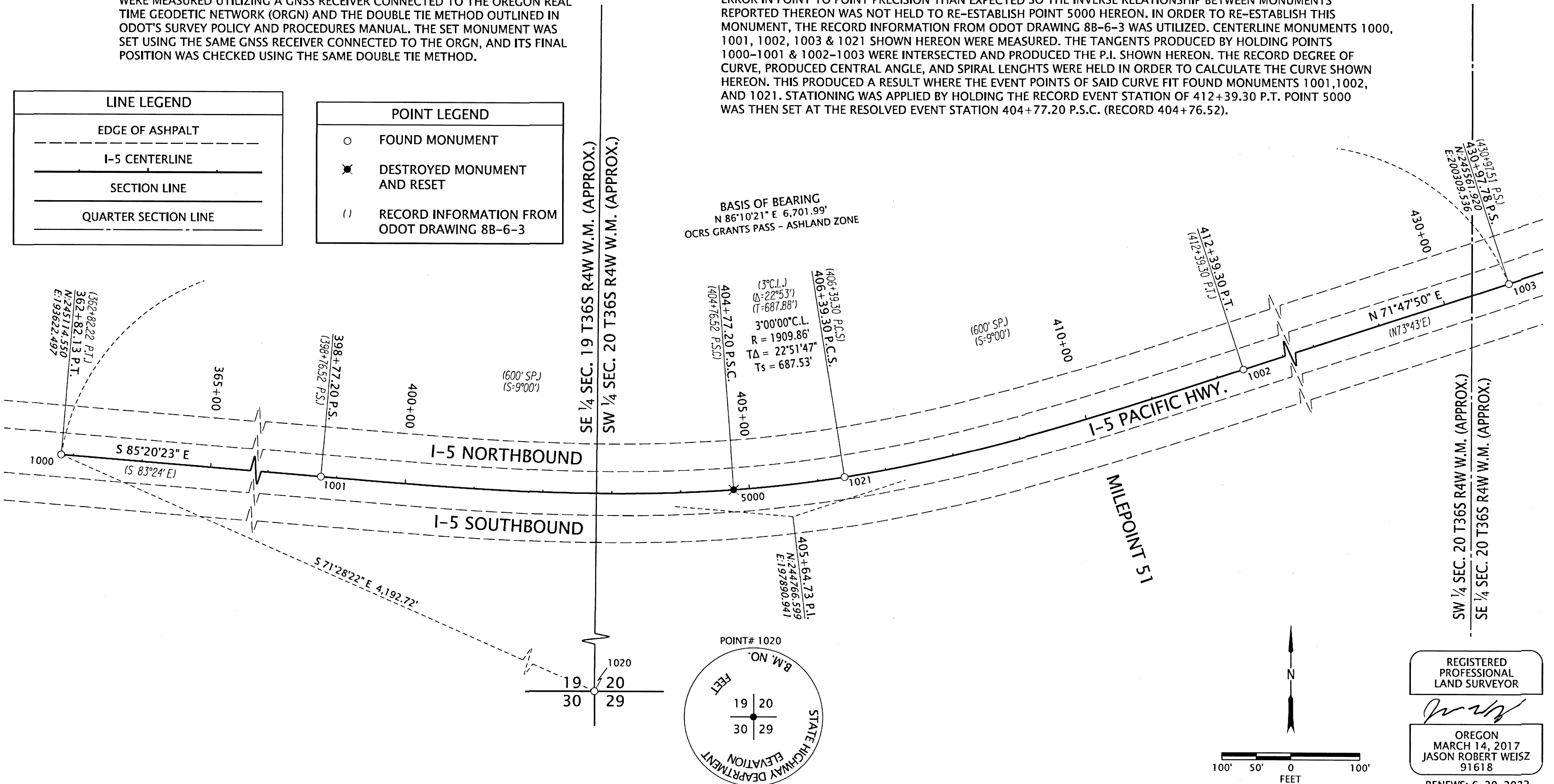
SURVEY DATUM- OREGON COORDINATE REFERENCE SYSTEM (OCRS):  
 GRANTS PASS - ASHLAND ZONE,  
 NAD83(2011) EPOCH 2010 (INTERNATIONAL FEET)

EQUIPMENT- THE FIELD WORK FOR THIS PROJECT CONTROL WAS PERFORMED IN NOVEMBER OF 2021. 1 LEICA CS20 DATA COLLECTOR AND 1 LEICA GS14 GNSS RECEIVER WAS UTILIZED TO PERFORM THIS WORK. FOUND MONUMENTS SHOWN HEREON WERE MEASURED UTILIZING A GNSS RECEIVER CONNECTED TO THE OREGON REAL TIME GEODETIC NETWORK (ORGN) AND THE DOUBLE TIE METHOD OUTLINED IN ODOT'S SURVEY POLICY AND PROCEDURES MANUAL. THE SET MONUMENT WAS SET USING THE SAME GNSS RECEIVER CONNECTED TO THE ORGN, AND ITS FINAL POSITION WAS CHECKED USING THE SAME DOUBLE TIE METHOD.

**SURVEY NARRATIVE**

THE PURPOSE OF THIS SURVEY WAS TO REPLACE A MONUMENT THAT WAS DESTROYED IN THE MEDIAN OF I-5 BY A VEHICLE ACCIDENT. THERE WAS NO PREVIOUS TIE TO THIS MONUMENT BY THIS OFFICE, HOWEVER MAP OF SURVEY 17348 DID ESTABLISH SOME OF THE FOUND MONUMENTS SHOWN HEREON. THIS MAP WAS FOUND TO HAVE A GREATER ERROR IN POINT TO POINT PRECISION THAN EXPECTED SO THE INVERSE RELATIONSHIP BETWEEN MONUMENTS REPORTED THEREON WAS NOT HELD TO RE-ESTABLISH POINT 5000 HEREON. IN ORDER TO RE-ESTABLISH THIS MONUMENT, THE RECORD INFORMATION FROM ODOT DRAWING 8B-6-3 WAS UTILIZED. CENTERLINE MONUMENTS 1000, 1001, 1002, 1003 & 1021 SHOWN HEREON WERE MEASURED. THE TANGENTS PRODUCED BY HOLDING POINTS 1000-1001 & 1002-1003 WERE INTERSECTED AND PRODUCED THE P.I. SHOWN HEREON. THE RECORD DEGREE OF CURVE, PRODUCED CENTRAL ANGLE, AND SPIRAL LENGTHS WERE HELD IN ORDER TO CALCULATE THE CURVE SHOWN HEREON. THIS PRODUCED A RESULT WHERE THE EVENT POINTS OF SAID CURVE FIT FOUND MONUMENTS 1001, 1002, AND 1021. STATIONING WAS APPLIED BY HOLDING THE RECORD EVENT STATION OF 412+39.30 P.T. POINT 5000 WAS THEN SET AT THE RESOLVED EVENT STATION 404+77.20 P.S.C. (RECORD 404+76.52).

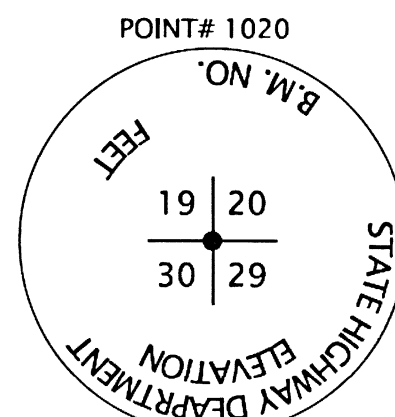
LINE LEGEND		POINT LEGEND	
	EDGE OF ASPHALT		FOUND MONUMENT
	I-5 CENTERLINE		DESTROYED MONUMENT AND RESET
	SECTION LINE		RECORD INFORMATION FROM ODOT DRAWING 8B-6-3
	QUARTER SECTION LINE		



**MONUMENT TABLE**

PT. NO.	STATION	OFFSET	OCRS NORTHING	OCRS EASTING	DATE	DESCRIPTION	REFERENCE DOCUMENT
1000	362+82.13 P.T.	0.00	245114.55	193622.50	11/10/2021	FD 1-1/2" BRASS CAP IN CONC "ODOT CONTROL", P/P SHRP CL 362+82.22 PT	CS 17348
1001	398+77.14 P.S.	0.00	244822.46	197205.62	11/10/2021	FD 1-1/2" BRASS CAP IN CONC "ODOT CONTROL", P/P SHRP CL 398+76.52 PS	CS 17348
1002	412+39.25 P.T.	0.00	244981.35	198544.02	11/10/2021	FD 1-1/2" BRASS CAP IN CONC "ODOT CONTROL", P/P SHRP CL 412+39.30 P.T.	ODOT 8B-6-3
1003	430+97.78 P.S.	0.00	245561.92	200309.54	11/10/2021	FD 2-1/2" BRASS DISK IN CONC "STATE HIGHWAY DEPARTMENT REFERENCE 430+97.51 P.S."	ODOT 8B-6-3
1020	-	-	243782.29	197597.92	11/9/2021	FD 2-1/2" BRASS DISK STATE HIGHWAY DEPARTMENT BM NO. ELEVATION 19.20, 29.30"	CS 393
1021	406+39.21 P.C.S.	0.04	244824.14	197965.61	11/10/2021	FD 2-1/2" BRASS DISK IN CONC "STATE HIGHWAY DEPARTMENT REFERENCE 406+39.30 P.C.S."	CS 17348
5000	404+77.20 P.S.C.	0.00	244805.09	197804.78	11/22/2021	SET 3" BRASS DISK IN CONC. "OREGON DEPARTMENT OF TRANSPORTATION"	-

CONC=CONCRETE  
 P/P=POST AND PADDLE WITNESS FD=FOUND



REGISTERED PROFESSIONAL LAND SURVEYOR

OREGON  
 MARCH 14, 2017  
 JASON ROBERT WEISZ  
 91618  
 RENEWS: 6-30-2022

**OREGON DEPARTMENT OF TRANSPORTATION**  
 MAP OF SURVEY FOR MONUMENT REPLACEMENT  
 I-5: MILEPOINT 51 MEDIAN/CENTERLINE MONUMENTATION  
 JACKSON COUNTY

ODOT REGION 3 TECH CENTER  
 100 ANTELOPE RD.  
 WHITE CITY, OR 97503 KEY NO: DIST. PROJ. I-5 SHEET 1 OF 1

NOVEMBER 30, 2021  
 SCALE: 1" = 100'