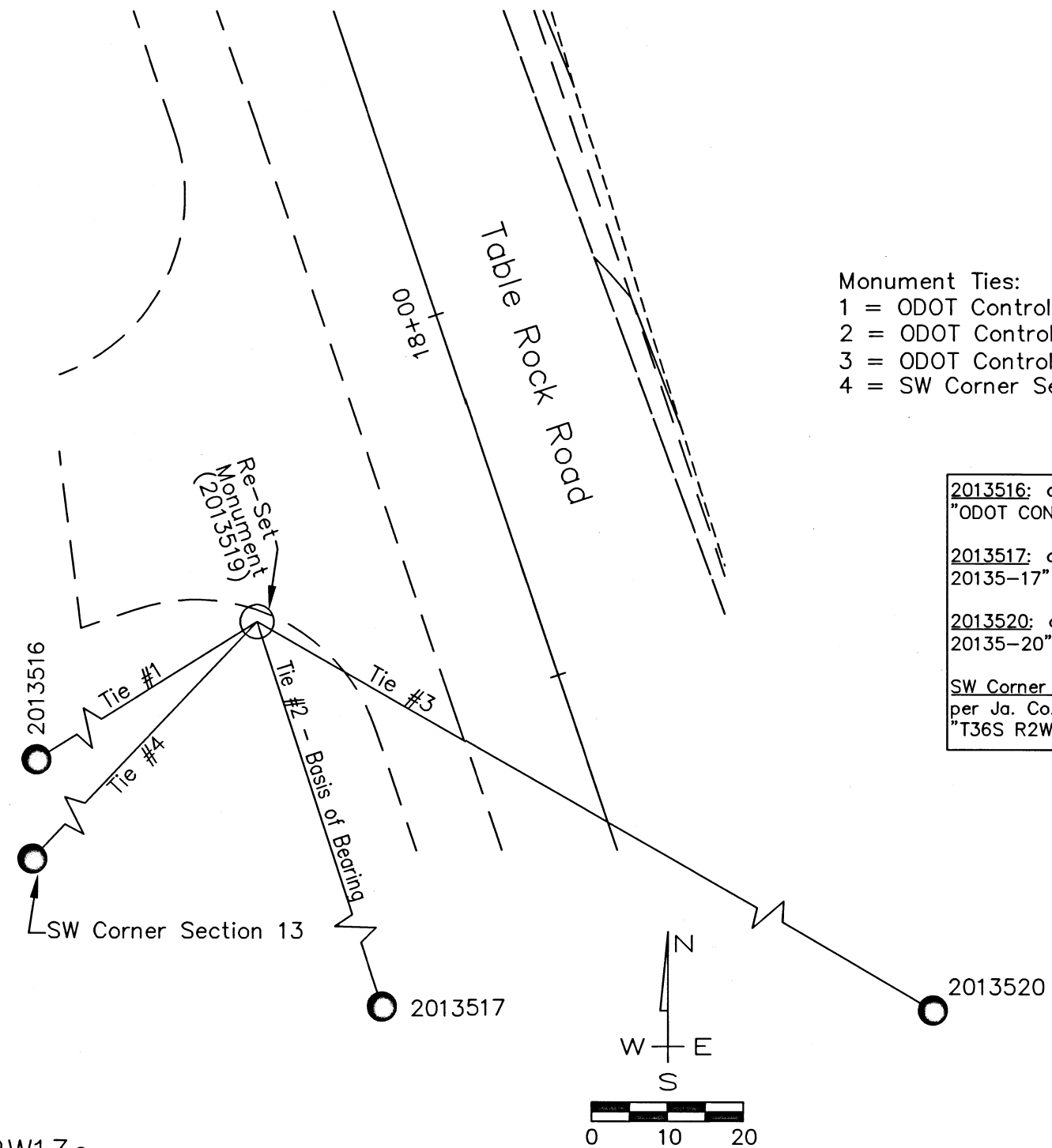


23471

# Map of Survey Located in:

SW 1/4 Section 13, Township 36 South, Range 2 West,  
Willamette Meridian, Jackson County, Oregon

**\*\* RECEIVED \*\***  
 DATE 10/20/21 BY JP  
 This survey consists of:  
 1 sheet(s) Map  
 0 page(s) Narrative  
 JACKSON COUNTY  
 SURVEYOR



### Monument Ties:

- 1 = ODOT Control Point 2013516 bears S57°58'03"W, 1326.64'
- 2 = ODOT Control Point 2013517 bears S18°05'43"E, 812.43'
- 3 = ODOT Control Point 2013520 bears S60°16'52"E, 1440.93'
- 4 = SW Corner Section 13 bears S43°28'56"W, 1993.98'

**2013516:** a found 5/8" Rebar w/2" Alum. Cap  
 "ODOT CONTROL 20135-16" per FS22862.

**2013517:** a found 1" Copper Plug "ODOT CONTROL  
 20135-17" per FS22862.

**2013520:** a found 1" Copper Plug "ODOT CONTROL  
 20135-20" per FS22862.

**SW Corner Section 13:** a found 2.5" Brass Disk  
 per Ja. Co. 3rd Re-Estab  
 "T36S R2W 14/13/23/24 CS 1990"

SURVEY NARRATIVE TO COMPLY WITH ORS209.250

### PURPOSE:

To re-monument that monument of record, ODOT control point 2013519 per filed survey 22862, of which was destroyed during a recent roadway improvement project.

### PROCEDURE:

Utilizing survey control provided and further established during this roadway improvement project, as well as ties to the destroyed monument prior to it's removal, we re-set a new monument in the same location as the destroyed monument. The destroyed and reset monument does not represent a boundary monument, simply a control point.

The re-set monument is a 5/8" rebar with cap marked "PARIANI PLS 51382" and falls 1'± south of the newly paved southerly driveway to the Medford Water Commission Facility along Table Rock Road.

Monument was set on September 21, 2021.

Basis of bearing is between the re-set monument and ODOT control Point 201317.

SURVEY FOR:  
Medford Water Commission

EQUIPMENT USED:  
Trimble R10, GPS RTK.

362W13c

**REGISTERED  
PROFESSIONAL  
LAND SURVEYOR**

*John R. Pariani*  
**OREGON**  
July 13, 1999  
**JOHN R. PARIANI**  
#51382

Renews: December 31, 2022

## Pariani Land Surveying

17 South Platt Avenue, Suite C  
Eagle Point, Oregon 97524  
541-890-1131 ParianiLS@yahoo.com

Date:	Scale:	Job No.:	Sheet:
October 12, 2021	1" = 20'	2021-577	1 of 1

23471