

MAP OF SURVEY
MONUMENT RECOVERY & BOUNDARY SURVEY
 Located in Sections 9 & 10, T.38S., R.1W., W.M.
 & of Lot 16, Block 2, BARNUM SUBDIVISION &
 in the City of Phoenix & in Jackson County, Oregon

COURSE DATA TABLE

NUM	DELTA	ARC	RADIUS	CHORD
C1	07°52'02" (07°52'03")	19.22 (19.22)	140.00 (140.00)	S31°29'10"E 19.21
C2	63°24'18" (63°23'42")	127.28 (127.24)	115.00 (115.00)	S57°57'50"W 120.87
C3	61°42'34" (61°40'38")	123.88 (123.79)	115.00 (115.00)	S04°35'36"E 117.96
C4	10°50'28" (10°50'26")	26.49 (26.49)	140.00 (140.00)	S84°14'45"W 26.45
C5	33°12'06" (33°12'15")	81.13 (81.13)	140.00 (140.00)	S82°13'28"W 80.00
C6	63°25'05" (63°23'42")	99.62 (99.58)	90.00 (90.00)	S57°57'30"W 94.61
C7	61°42'19" (62°40'38")	96.93 (96.88)	90.00 (90.00)	S57°57'30"W 94.61
C8	125°06'38" (125°06'15")	43.67 (43.67)	20.00 (20.00)	N27°08'08"E 35.50

- LEGEND:**
- = FD. BRASS CAP IN CONCRETE PER BS.
 - = FD. 5/8" IRON PIN PER BS.
 - ⊕ = FD. 5/8" IRON PIN & PLASTIC CAP MKD. L.J. FRIAR & ASSOC. PER FS23240.
 - △ = FD. 1" COPPER PLUG PER FS22683.
 - ⊖ = FD. 2" ALUMINUM CAP IN CONCRETE PER FS22683.
 - = SET 5/8" X 24" IRON PIN & PLASTIC CAP MKD. L.J. FRIAR & ASSOC.
 - ⊗ = SET CONC. NAIL & BRASS TAG MKD. L.J. FRIAR & ASSOC. IN TOP OF RETAINING WALL.
- BS = BARNUM SUBDIVISION (FS8254).
 ORJCO = OFFICIAL RECORDS OF JACKSON COUNTY, OREGON.
 # ## WC = ## FEET WITNESS CORNER MONUMENT.
 () = RECORD DATA PER BS.
 FS = FILED SURVEY #.
 C1 = SEE COURSE DATA TABLE.

SURVEY FOR:
 SHERI CROY &
 ALMEDA FIRE VICTIMS
 PO BOX 1947
 PHOENIX, OR 97535

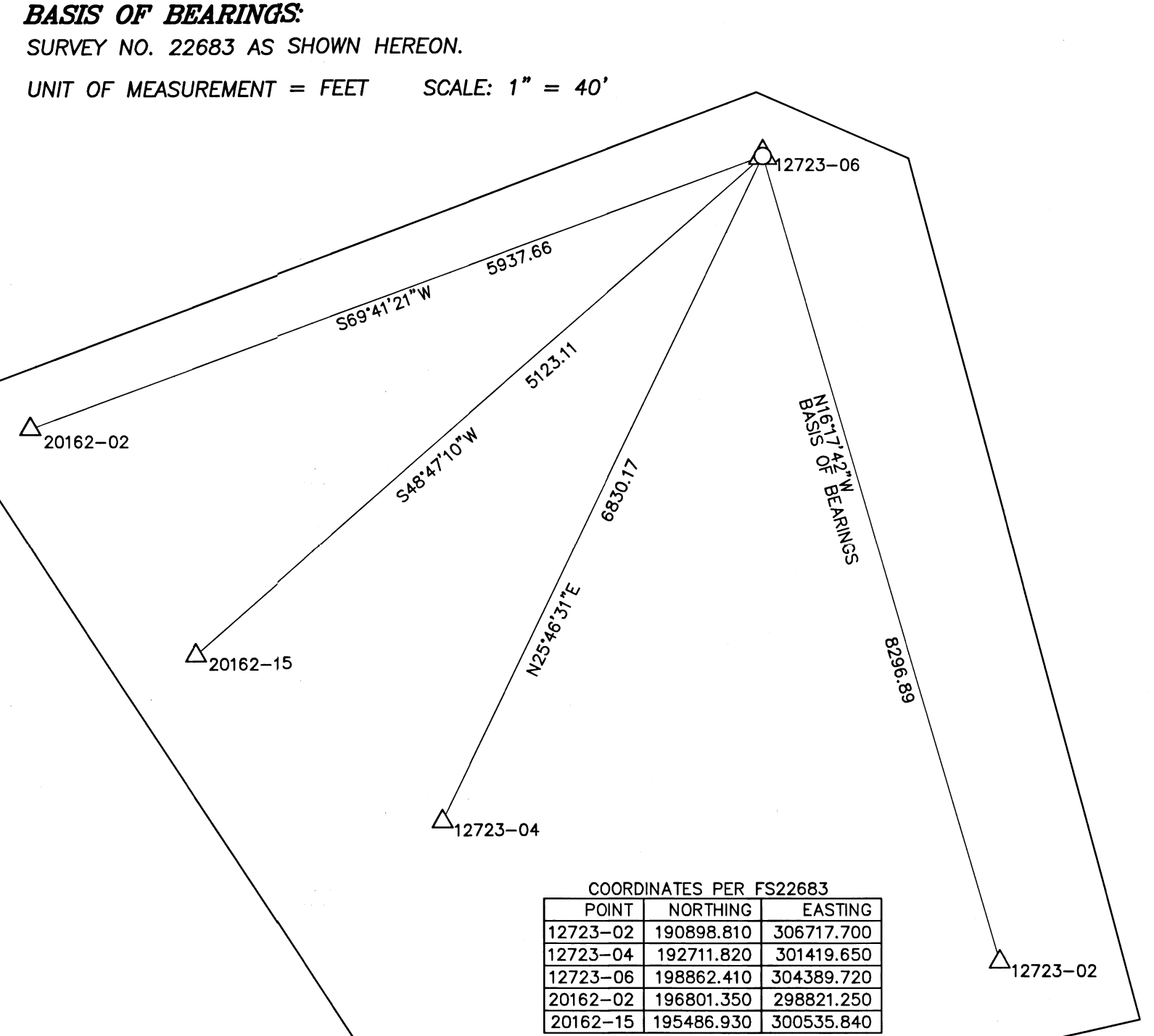
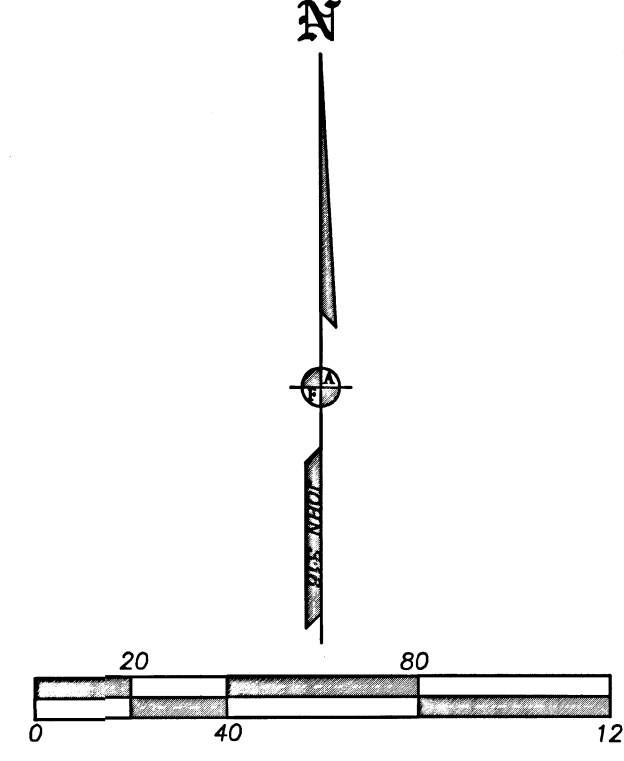
SURVEY BY:
 L.J. FRIAR & ASSOCIATES, P.C.
 CONSULTING LAND SURVEYORS
 PO BOX 1947
 PHOENIX, OR 97535
 PHONE: (541) 772-2782
 LJFRIARANDASSOCIATES@CHARTER.NET

DATE:
 JULY 19, 2021

SURVEY NARRATIVE TO COMPLY WITH O.R.S. 209.250

PURPOSE: TO SURVEY AND MONUMENT THE CORNERS OF LOT 16, BLOCK 2 OF BARNUM SUBDIVISION, TO RECOVER EXISTING MONUMENTS ON VARIOUS PROPERTIES DESTROYED BY THE 2020 ALMEDA FIRE AND TO SET THE S.W. CORNER OF BLOCK 2 OF BARNUM SUBDIVISION AS ALL MONUMENTS ALONG THE RAILROAD R/W ARE EITHER DESTROYED OR UNDER 3'-6" OF FILL DIRT.

PROCEDURE: USING TRIMBLE R10 G.P.S. RECEIVERS, MADE TIES TO MONUMENTS OF RECORD AS SHOWN ON SHEET 1. USED THE COORDINATE POSITION OF PT #1036 PER FS22683 TO POSITION & RESET THE N.E. CORNER OF LOT 27, BLOCK 2. ROTATED THE NORTH LINE OF BARNUM SUBDIVISION TO FIT BETWEEN THE N.E. CORNER OF LOT 27 AND THE FOUND MONUMENT AT THE N.W. CORNER OF LOT 13, BLOCK 2. THE DISTANCE BETWEEN THESE POSITIONS FIT PLAT RECORD LESS THAN 0.01' SO I HELD PLAT RECORD DISTANCES TO POSITION THE TWO ANGLE POINTS AS WELL AS THE N.E. & N.W. CORNER OF LOT 16. HELD PLAT RECORD DISTANCES ALONG THE R/W OF BARNUM DR. TO POSITION THE S.W. & S.E. CORNERS AS THESE TWO POSITION FELL IN RECENTLY SET POWER PEDESTALS SO WITNESS CORNER MONUMENTS WERE SET AS SHOWN. IN ADDITION A WITNESS CORNER WAS SET NEAR THE N.E. CORNER AS I COULD NOT DRIVE A PIN THROUGH THE CONCRETE BASE OF THE RETAINING WALL ALONG THE REAR OF THE PROPERTY. OTHER EXISTING MONUMENTS WERE RECOVERED AND TIED IN CASE THEY ARE REMOVED DURING CLEANUP OR REBUILD OPERATIONS ON THESE PROPERTIES.



381W09CA TL'S 3600, 4100, 4700 & 4900
 381W09BD TL'S 200, 1100-1600, 2500, 3500-3900

THIS PLAT WAS PREPARED USING AN EPSON SC-T5200 WITH EPSON T6925 INK ON MILANO JPC4M2 POLYESTER FILM.

REGISTERED PROFESSIONAL LAND SURVEYOR
 J. FRIAR
 OREGON
 JULY 17, 1986
 JAMES E. HIBBS
 2234
 RENEWAL DATE: 6-30-23

FILED
 Date 7/21/21 By JCF
 This Survey Consists Of:
 1 sheet(s) Map
 0 page(s) Narrative
 JACKSON COUNTY SURVEYOR