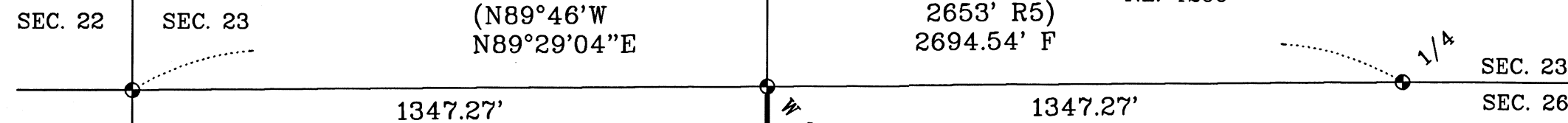


TOWNSHIP 33 SOUTH, RANGE 2 WEST, W.M.

JOHN HANCOCK LIFE INSURANCE CO. (U.S.A.) D.N. 2017-010772 T.L. 4100

U.S.A. T.L. 4200



CORNER OF SECTIONS 22, 23, 26, & 27: MONUMENT STAMPED "T33S R2W S22 S23 S26 S27 1965" PER R2, FROM WHICH BEARS:

YP STUMP HOLE S83°W 48.2' F=R2. 15" DF WITH HB N59°E 33.0' F=R2. 8" DF SNAG WITH HB S39 1/2°W 17.5' F (S38°W 17.8' R2). 6" DF WITH VS S59°E 30.9' PER R4. 8" DF WITH VS S25 3/4°W 14.8' PER R4. 10" IC WITH VS N29 1/2°W 32.9' PER R4.

W 1/16 CORNER OF SECTIONS 23 & 26: MONUMENT STAMPED "W 1/16 S23 S26 2020" PER R4, FROM WHICH BEARS:

13" YP WITH VS S67 3/4°E 14.7' PER R4. 18" IC WITH VS N41 1/2°E 57.5' PER R4.

1/4 CORNER OF SECTIONS 23 & 26: MONUMENT STAMPED "T33S R2W 1/4 S23 S26 1965" PER R3, FROM WHICH BEARS:

14" DF WITH HB N18°E 12.7' F=R3. 7" DF WITH HB S39 1/2°E 2.9' F=R3. 8" DF WITH HB S45 1/2°W 25.3' F (S43 1/2°W R3). 7" DF WITH HB N66°W 30.6' F=R3. 30" YP SNAG, ROTTED, N9°W 12.8' F=R3. 20" IC STUMP S28°W 22.5' F (21.0' R3).

EHLERS D.N. 2021-002790 T.L. 4600

MURPHY TIMBER INVESTMENTS, LLC D.N. 2014-032842 T.L. 4500

N0°15'06"W 2665.32'

C-W 1/16 CORNER OF SECTION 26: FROM FOUND MONUMENT BEARS:

28" YP WITH HB S48°W 39.8' F (S49°34'W 38.63' R1). 30" YP SCRIBED "XBT" THIS SURVEY S79°E 4.6'.

C 1/4 CORNER OF SECTION 26: FROM FOUND MONUMENT BEARS:

24" WO SNAG WITH HB N27°E 28.8' F (N28°35'E 28.97' R1). 17" WO WITH HB S61 1/2°W 24.5' F (S62°40'W 24.77' R1). 11" DF SCRIBED "XBT" THIS SURVEY S72 1/4°W 5.6'. 9" DF SCRIBED "XBT" THIS SURVEY N40 3/4°E 13.3'. 9" WO SCRIBED "XBT" THIS SURVEY S87 1/2°E 26.2'.

C 1/4 CORNER OF SECTION 26: FROM FOUND MONUMENT BEARS:

19" DF WITH HB N45 1/2°W 15.3' F (N43°52'W 15.41' R1). 25" DF WITH HB S38 3/4°E 10.3' F (S36°45'E 10.24' R1).

SEC. 26

C-W 1/16

(S88°08'19"E 1340.91' R1) (S89°21'16"E 1341.13' F)

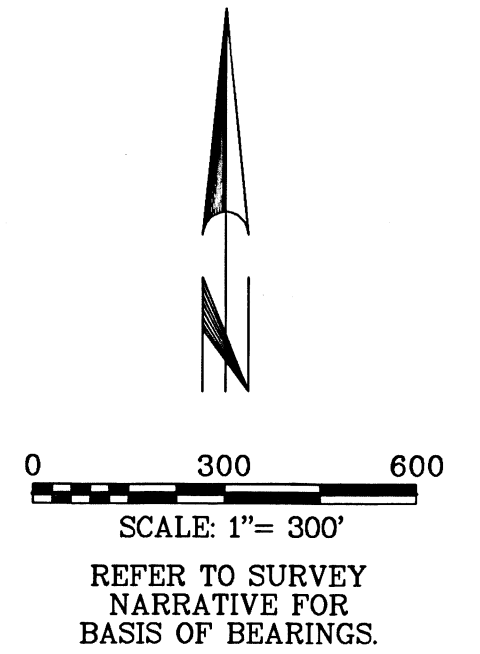
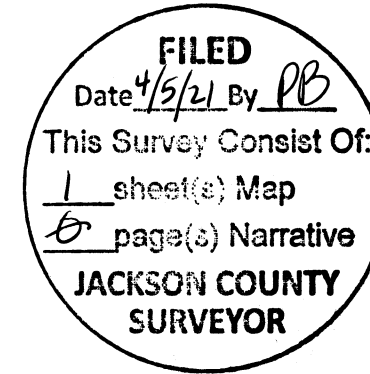
C 1/4

(S88°08'19"E 1365.74' R1) (S89°22'42"E 1365.50' F)

C-E 1/16

WANG D.N. 2014-005408 T.L. 4700

SEC. 26



REFERENCES:

- R1 = CS 3290
R2 = BLM NOTES FOR 1965 CORNER REMONUMENTATIONS BY JOSEPH S. GAWRON.
R3 = CS 2016 CORNER REPORT FOR THE 1/4 CORNER OF SECTIONS 23 & 26, T.33S., R.2W., W.M.
R4 = BLM 2020 FIELD SURVEY (NO RECORD YET APPROVED).
R5 = GLO PLAT FOR T.33S., R.2W., W.M. APPROVED JAN. 1880.

REGISTERED PROFESSIONAL LAND SURVEYOR

GREGG ARNOLD NEITSCH 77662LS

EXPIRES: 12/31/2022

SURVEY NARRATIVE:

THE PURPOSE OF THIS SURVEY IS TO BLAZE AND TAG THE LINES SHOWN IN BOLD HEREON. LINE TREES AND TREES ON NON-MURPHY SIDE OF THE BOLD LINES WERE BLAZED THIS SURVEY. TREES ON MURPHY SIDE OF LINE WERE TAGGED.

I RETRACED THE LINES BETWEEN THE FOUND MONUMENTS AS SHOWN IN ORDER TO DELINEATE THE BOUNDARIES BETWEEN LANDS DESCRIBED IN DEEDS FOR TAX LOTS 4500, 4600, & 4700 (D.N. 2014-032842, D.N. 2021-002790, & D.N. 2014-005408).

THIS SURVEY WAS CONDUCTED USING A TOPCON GTS 3003W TOTAL STATION AND TOPCON HIPER GPS RECEIVERS. THE FIELD SURVEY COMMENCED MARCH 11, 2021 AND WAS COMPLETED MARCH 13, 2021.

THE BASIS OF BEARINGS FOR THIS SURVEY IS GEODETIC (NAD83), AT THE 1/4 CORNER OF SECTIONS 23 AND 26 SHOWN HEREON, BASED ON STATIC GPS OBSERVATIONS TO CONTINUOUSLY OPERATING REFERENCE STATIONS (EPOCH 2011).

ALL FIELD BEARINGS AND DISTANCES TO BEARING TREES ARE TO THE CENTER OF THE TREE AT THE GROUND.

A STANDARD BLM MONUMENT IS A 2 1/2" O.D. GIP, OR STAINLESS STEEL POST, WITH 3 1/4" DIAM. BC.

LEGEND OF SYMBOLS & ABBREVIATIONS:

- FOUND STANDARD BLM MONUMENT (SEE NARRATIVE).
FOUND 3/4" REBAR PER R1.
BC BRASS CAP
DF DOUGLAS FIR
D.N. DOCUMENT NUMBER
F FIELD MEASUREMENT
GIP GALVANIZED IRON PIPE
HB HEALED BLAZE
IC INCENSE CEDAR
I.D. INSIDE DIAMETER
O.D. OUTSIDE DIAMETER
VS VISIBLE SCRIBING
WO WHITE OAK
YP YELLOW PINE
() RECORD DATA

MAP OF SURVEY

FOR MURPHY TIMBER INVESTMENTS, LLC

LOCATED IN THE NORTH HALF OF SECTION 26, T. 33 S., R. 2 W., W.M., JACKSON COUNTY, OREGON

NORTH STATE LAND SURVEYING 1511 KYLYNN CT. MOUNT SHASTA, CA

MARCH 2021 SCALE: 1"=300' SHEET 1 OF 1 MBGGND.ASC MBGMOS.GXD JOB NO. 678