

GREENSPRINGS SUBDIVISION

IN SECTIONS 11, 12, 13 & 14, TOWNSHIP 39 SOUTH,
RANGE 1 EAST, WILLAMETTE MERIDIAN,
JACKSON COUNTY, OREGON.

DEDICATION

KNOW ALL MEN BY THESE PRESENTS, that Oak Knoll Land Corporation is the owner in fee simple of the lands hereon described, and said Oak Knoll Land Corporation has subdivided the same into lots, blocks and streets as shown hereon, and the number and size of the lots and lengths of all lines are plainly set fourth, and that this plat is a correct representation of the said subdivision and said Oak Knoll Land Corporation does hereby dedicate to the public for public use all streets and easements for public utilities, shown hereon, and said Oak Knoll Land Corporation does designate said subdivision as GREENSPRINGS SUBDIVISION.

IN WITNESS WHEREOF, Oak Knoll Land Corporation, pursuant to a resolution of its Board of Directors, duly and regularly adopted, has caused these presents to be signed by its President and Secretary and its corporate seal to be affixed this 30th day of August, 1963.

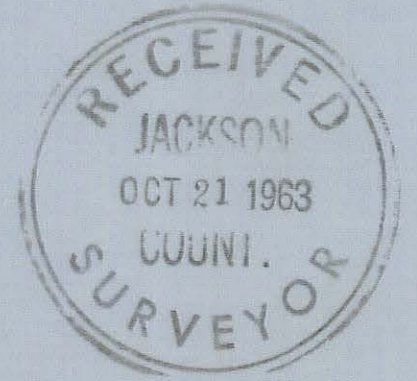
OAK KNOLL LAND CORPORATION
By: William T. Dawkins President
By: Manville M. Heisel Secretary

STATE OF OREGON } s. s.
County of Jackson

On this 30th day of August, 1963, before me appeared William T. Dawkins and Manville M. Heisel, both to me personally known, who being duly sworn, did say that he, the said William T. Dawkins is the President, and he, the said Manville M. Heisel, is the Secretary of Oak Knoll Land Corporation, the within named Corporation, and that the seal affixed to said instrument is the corporate seal of said Corporation, and that the said instrument was signed and sealed in behalf of said Corporation by authority of its Board of Directors, and William T. Dawkins and Manville M. Heisel acknowledged said instrument to be the free act and deed of said Corporation.

IN TESTIMONY WHEREOF, I have hereunto set my hand and affixed my official seal the day and year last above written.

Mary H. Brown
NOTARY PUBLIC FOR OREGON
My Commission expires: May 28, 1965



All taxes paid in full to date this the 24 day of Sept., 1963.
De Grand Figh
COUNTY SHERIFF

Examined and recommended for approval of the County Court.
Neil E. Hayden
COUNTY SURVEYOR

For order of the County Court approving this plat see Volume _____, at page _____ of County Commissioners' Journal of Proceedings.
Sam Veech
COUNTY CLERK

Filed for record this 17 day of October, 1963 at 11:30 clock A.M. and recorded in volume 9 of plats at page 37 of records of Jackson County, Oregon.
Roger Roberts, C.S.
4/29/04
COUNTY RECORDER

I hereby certify that this tracing is an exact copy of the original plat filed with the County Clerk.
William B. Rick
ENGINEER

ENGINEER'S CERTIFICATE

STATE OF CALIFORNIA } s. s.
County of San Diego

I, WILLIAM B. RICK, a duly registered engineer of the State of Oregon, being first duly sworn, do hereby certify that under my direction, the tract of land hereon shown has been correctly surveyed and marked with proper monuments, and the said plat is a correct representation of the same and the following is an accurate description of the boundary lines:

Commencing at the corner common to Sections 11, 12, 13 and 14, Township 39 South, Range 1 East, Willamette Meridian, Jackson County, Oregon; thence along the East boundary of said Section 14, South 0° 02' 10" West, 106.00 feet to an 8" diameter by 24" concrete monument with bronze disk for the initial point of beginning; thence South 57° 50' West, 32.26 feet; thence on the arc of a 270 foot radius curve left; (the chord bears South 21° 27' West, 320.32 feet) a distance of 342.90 feet; thence South 14° 56' East, 214.84 feet; thence on the arc of a 280 foot radius curve right; (the chord bears South 21° 42' West, 334.15 feet) a distance of 358.05 feet; thence South 58° 20' West, 143.11 feet; thence on the arc of a 270 foot radius curve left; (the chord bears South 57° 40' 10" West, 6.26 feet) a distance of 6.26 feet; thence South 35° 58' East, 100.00 feet; thence South 61° 44' 50" East, 57.08 feet; thence South 47° 26' 06" East, 85.29 feet; thence South 30° 04' 32" East, 86.00 feet; thence South 9° 25' 45" East, 85.87 feet; thence South 3° 57' 45" West, 85.87 feet; thence South 26° 07' 13" West, 85.73 feet; thence South 38° 18' West, 133.98 feet; thence North 51° 42' West, 80.00 feet; thence on the arc of a 20 foot radius curve right; (the chord bears North 6° 42' West, 28.28 feet) a distance of 31.42 feet; thence South 38° 18' West, 63.00 feet; thence on the arc of a 230 foot radius curve left; (the chord bears South 34° 36' 23" West, 29.62 feet) a distance of 29.65 feet; thence on the arc of a 20 foot radius curve right; (the chord bears North 79° 36' 24" East, 30.05 feet) a distance of 33.99 feet; thence South 51° 42' East, 78.26 feet; thence South 23° 53' 33" West, 50.17 feet; thence South 2° 07' 29" West, 48.98 feet; thence South 19° 30' 59" East, 50.77 feet; thence South 26° 39' East, 240.00 feet; thence South 63° 21' West, 104.57 feet; thence on the arc of a 160.00 foot radius curve right; (the chord bears South 13° 10' 10" West, 140.68 feet) a distance of 145.66 feet; thence South 39° 15' West, 7.33 feet; thence on the arc of a 20 foot radius curve left; (the chord bears South 1° 29' 20" West, 24.50 feet) a distance of 26.36 feet; thence on the arc of a 180 foot radius curve right; (the chord bears South 28° 20' 40" East, 49.65 feet) a distance of 49.81 feet; thence South 69° 35' West, 60.00 feet; thence South 76° 08' 21" West, 255.24 feet to the Northeastly boundary of Interstate Highway #5; thence North 26° 39' West along said Highway boundary, 599.62 feet to an intersection with the West boundary of Donation Land Claim No. 52 of said Township and Range; thence along said Claim boundary North 0° 00' 50" West, 265.29 feet; thence North 37° 54' East, 263.47 feet; thence South 52° 06' East, 100.00 feet; thence North 37° 54' East, 20.00 feet; thence North 52° 06' West, 100.00 feet; thence North 32° 51' 48" E. 57.96 feet; thence North 14° 22' 43" East, 60.50 feet; thence North 11° 40' 39" East, 65.75 feet; thence North 16° 11' 56" East, 91.15 feet; thence North 31° 27' 06" East, 79.52 feet; thence North 38° 47' 08" East, 79.57 feet; thence North 54° 14' 40" East, 76.09 feet; thence South 35° 58' East, 100.00 feet; thence on the arc of a 330 foot radius curve right; (the chord bears North 57° 23' 57" East, 10.76 feet) a distance of 10.76 feet; thence North 58° 20' East, 143.11 feet; thence on the arc of a 220 foot radius curve left; (the chord bears North 21° 42' East, 262.54 feet) a distance of 281.32 feet; thence North 14° 56' West, 214.84 feet; thence on the arc of a 330 foot radius curve right; (the chord bears North 21° 27' East, 391.50 feet) a distance of 419.11 feet; thence North 57° 50' East, 59.53 feet; thence on the arc of a 43 foot radius curve left; (the chord bears North 1° 08' 30" East, 71.87 feet) a distance of 85.09 feet; thence North 55° 33' West, 79.88 feet to the Southwestly boundary of the Green Springs Highway; thence along said Green Springs Highway boundary South 58° 25' East, 202.06 feet; thence on the arc of a 686.20 foot radius curve right; (the chord bears South 57° 51' 10" East, 13.49 feet) a distance of 13.49 feet; thence South 57° 50' West, 130.32 feet to the initial point of beginning.

William B. Rick
ENGINEER

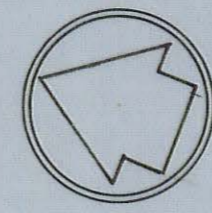
Subscribed and sworn to before me this 20th day of August, 1963.
My commission expires the 27th day of June, 1964.
Susan Folyer Fitch
NOTARY PUBLIC FOR CALIFORNIA

Examined and approved by the Jackson County Planning Commission in regular session this _____ day of _____, 196____.
Gerard T. Latham SECRETARY
C. O. Hoover PRESIDENT

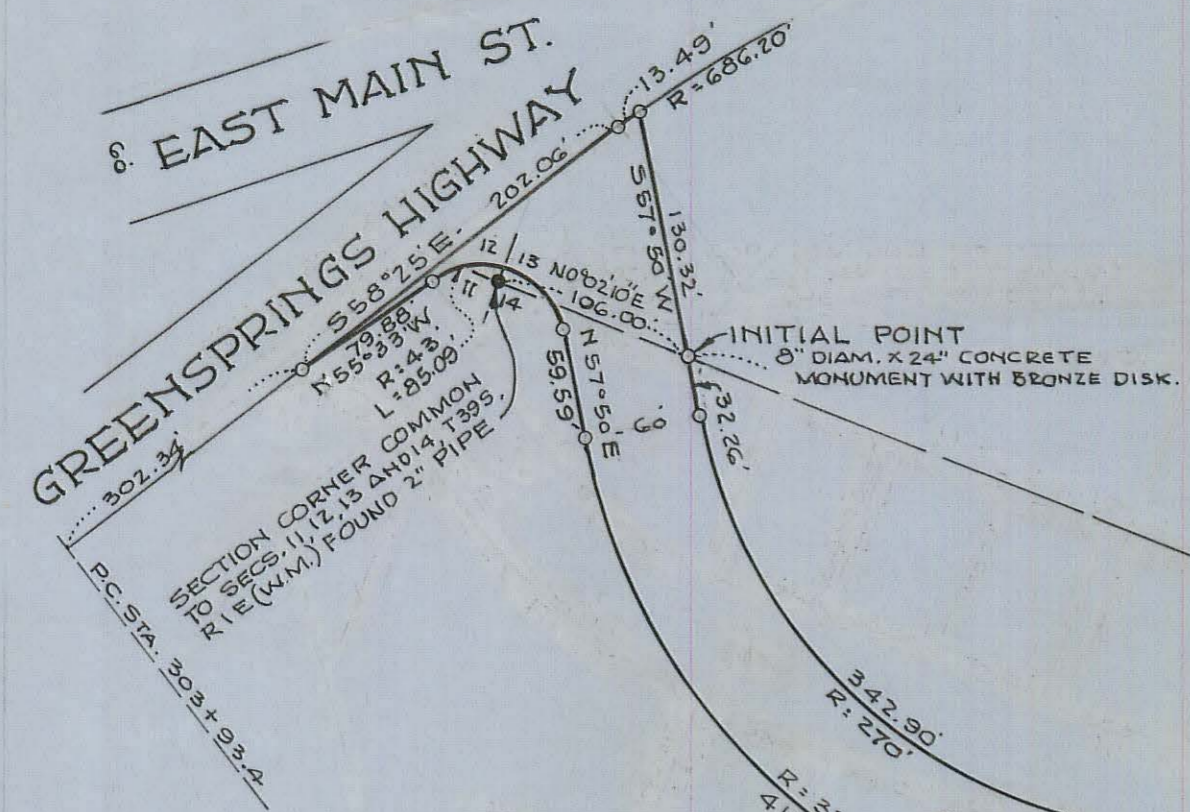
Examined and approved by the Talent Irrigation District in regular session this 3rd day of September, 1963.
W. H. Hooper SECRETARY
Homer Moore PRESIDENT

Examined and approved this 24th day of Sept, 1963.
Thad W. Hatten
COUNTY ASSESSOR

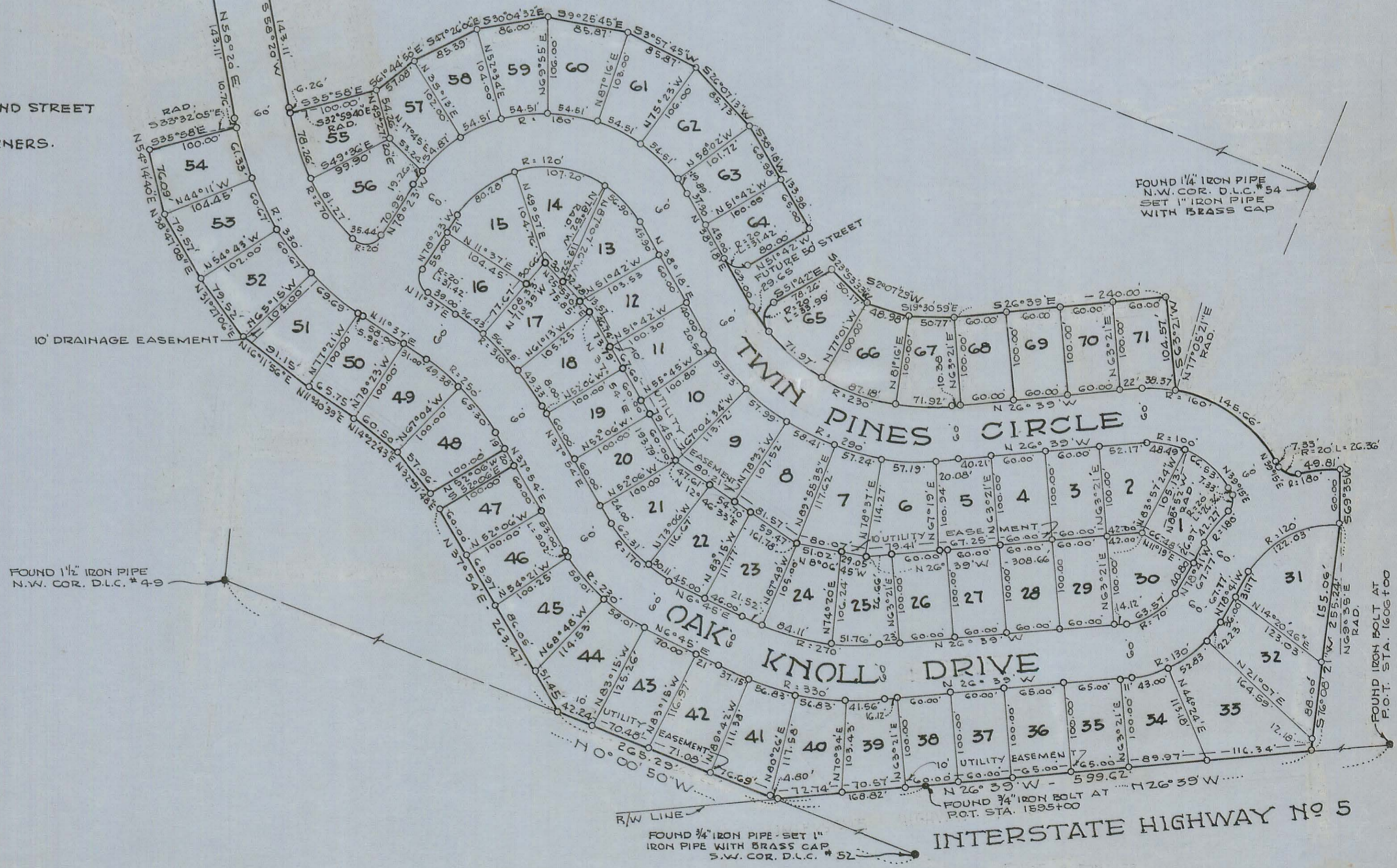
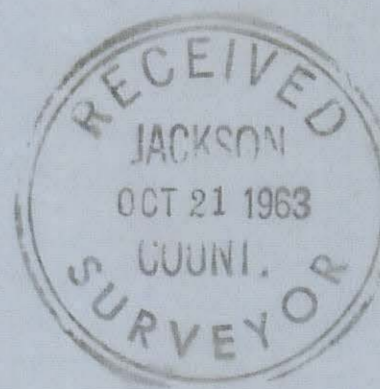
GREENSPRINGS SUBDIVISION IN SECTIONS 11, 12, 13 & 14, TOWNSHIP 39 SOUTH, RANGE 1 EAST, WILLAMETTE MERIDIAN, JACKSON COUNTY, OREGON.



SCALE: 1" = 100'



NOTE: SET 5/8" x 30" IRON PINS AT ALL OUTSIDE BOUNDARY AND STREET CORNERS UNLESS OTHERWISE INDICATED.
SET 5/8" x 24" IRON PINS AT THE REMAINING LOT CORNERS.
MERIDIAN BY SOLAR OBSERVATION.



SURVEY NARRATIVE TO COMPLY WITH O.R.S. 209.250

FOR: Oak Knoll Land Corporation
1 King Street
Medford, Oregon

LOCATION: DLC #52, Sections 11, 12, 13 & 14, Township
39 South, Range 1 East, Willamette Meridian.

PURPOSE: To monument and prepare plats for recording
the official plat of GREENSPRINGS SUBDIVISION.

PROCEDURE: Began transit-chain traverse at the officially
re-established corner common to Sections 11, 12, 13 & 14,
where a 2" iron pipe corner monument and the snag of the
original witness tree were found.

Solar observations were taken at this point,
using a mean of four observations to determine the
meridian control for this survey.

Traverse lines were then run enclosing the entire
Oak Knoll Land Corporation property in this area.

Donation Land Claim corners found to control the
boundaries were tied in and duly recorded in the
Government corner renewal volume on file in the office
of the County Surveyor.

Control for the Northeasterly boundary of Interstate
Highway No. 5 was determined from iron pin right-of-way
monuments as set by the State Highway Department.

The location of Greensprings Highway, not having
previously been monumented in this immediate vicinity
with permanent monuments, was determined from the
location of said highway at the recently surveyed
crossing of Interstate Highway No. 5 and the record
angle with East Main Street.

The East Main Street centerline was determined
from reference pipes found as set on the County Road
survey in 1910.

From this basic control, the lot and street controls were computed electronically, with said computations being varified by field crew monumentation.

August 1963

