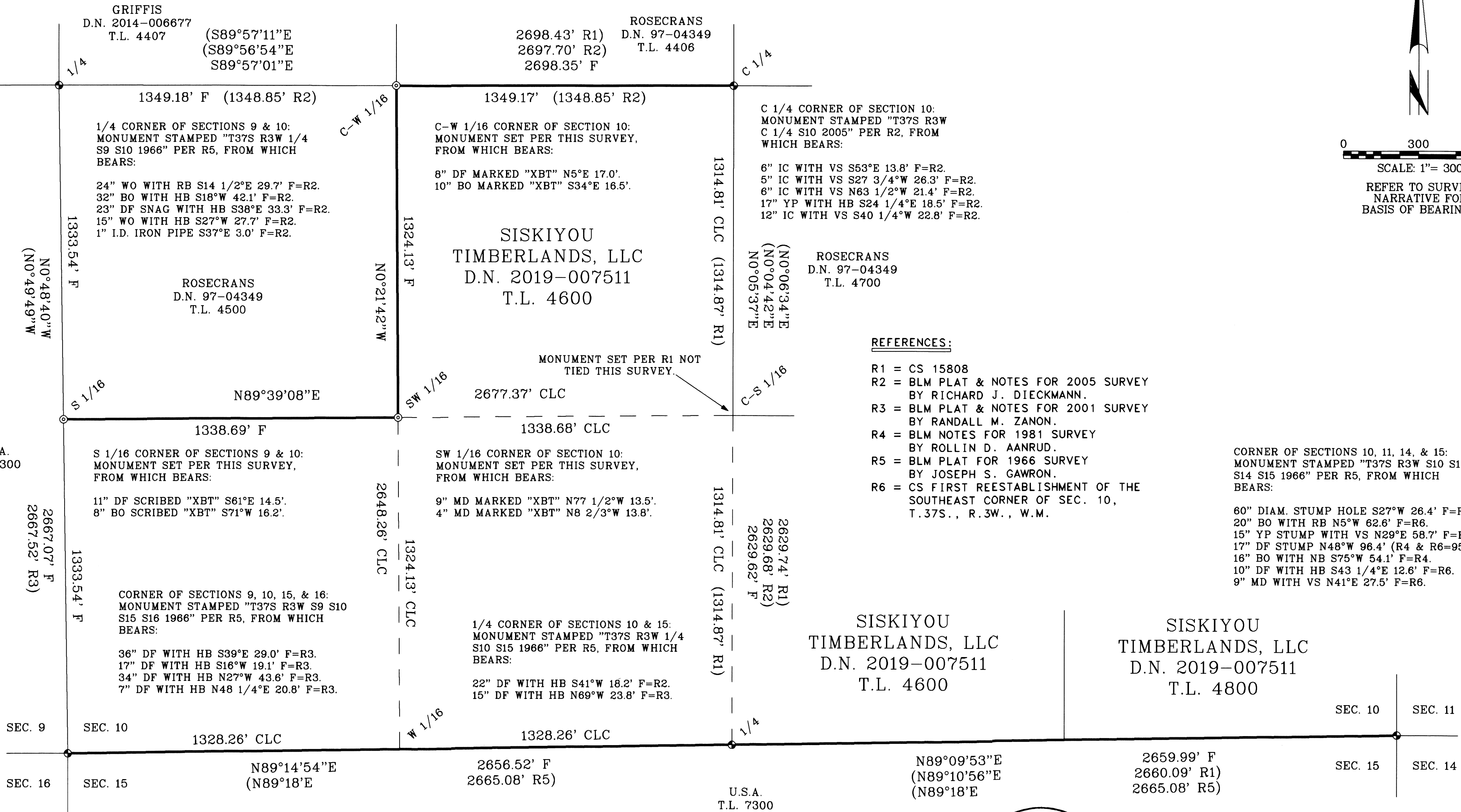
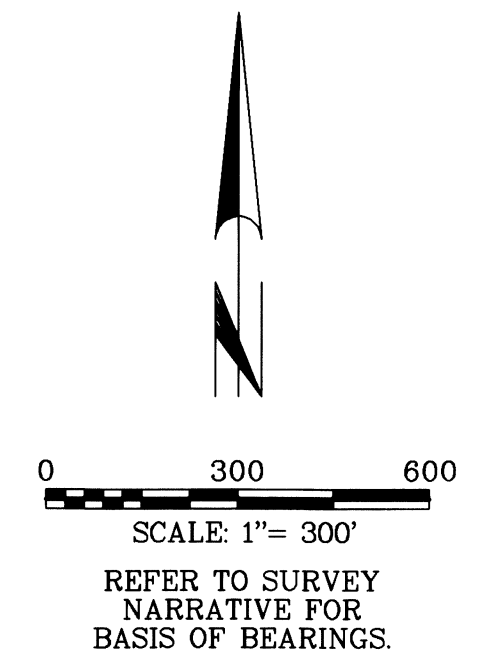


TOWNSHIP 37 SOUTH, RANGE 3 WEST, W.M.



REFERENCES:

- R1 = CS 15808
R2 = BLM PLAT & NOTES FOR 2005 SURVEY BY RICHARD J. DIECKMANN.
R3 = BLM PLAT & NOTES FOR 2001 SURVEY BY RANDALL M. ZANON.
R4 = BLM NOTES FOR 1981 SURVEY BY ROLLIN D. AANRUD.
R5 = BLM PLAT FOR 1966 SURVEY BY JOSEPH S. GAWRON.
R6 = CS FIRST REESTABLISHMENT OF THE SOUTHEAST CORNER OF SEC. 10, T. 37S., R. 3W., W.M.

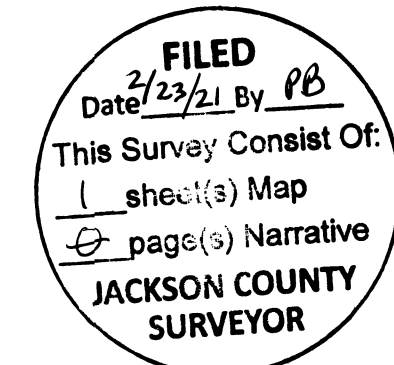
CORNER OF SECTIONS 10, 11, 14, & 15: MONUMENT STAMPED "T37S R3W S10 S11 S14 S15 1966" PER R5, FROM WHICH BEARS:
60" DIAM. STUMP HOLE S27°W 26.4' F=R4.
20" BO WITH RB N5°W 62.6' F=R6.
15" YP STUMP WITH VS N29°E 58.7' F=R6.
17" DF STUMP N48°W 96.4' (R4 & R6=95.0').
16" BO WITH NB S75°W 54.1' F=R4.
10" DF WITH HB S43 1/4°E 12.6' F=R6.
9" MD WITH VS N41°E 27.5' F=R6.

SURVEY NARRATIVE:

THE PURPOSE OF THIS SURVEY IS TO BLAZE THE LINES SHOWN IN BOLD HEREON. LINE TREES AND TREES ON BOTH SIDES OF THE BOLD LINES WERE BLAZED THIS SURVEY. USING FOUND MONUMENTS AS SHOWN, I RETRACED THE LINES BETWEEN 10 AND SECTION 15, AND SUBDIVIDED THE SOUTHWEST QUARTER OF SECTION 10 PER THE BLM 2009 MANUAL OF INSTRUCTIONS...

LEGEND OF SYMBOLS & ABBREVIATIONS:

- FOUND STANDARD BLM MONUMENT (SEE NARRATIVE).
◎ SET 5/8" REBAR, 30" LONG, 24" IN THE GROUND, WITH AC STAMPED PER BLM 2009 MANUAL OF INSTRUCTIONS AND "PLS 77662".
AC ALUMINUM CAP
BC BRASS CAP
BO BLACK OAK
CLC CALCULATED
DF DOUGLAS FIR
D.N. DOCUMENT NUMBER
F FIELD MEASUREMENT
GIP GALVANIZED IRON PIPE
HB HEALED BLAZE
IC INCENSE CEDAR
I.D. INSIDE DIAMETER
MD MADRONE
NB NO BLAZE
O.D. OUTSIDE DIAMETER
RB ROTTED BLAZE
STM STUMP
VS VISIBLE SCRIBING
WO WHITE OAK
YP YELLOW PINE
() RECORD DATA



REGISTERED PROFESSIONAL LAND SURVEYOR

OREGON JULY 11, 2006 GREGG ARNOLD NEITSCH 77662LS EXPIRES: 12/31/2022

MAP OF SURVEY

FOR SISKIYOU TIMBERLANDS, LLC THE LINES BETWEEN SECTION 10 AND SECTION 15, AND THE SW 1/4 OF SECTION 10, T. 37 S., R. 3 W., W.M., JACKSON COUNTY, OREGON NORTH STATE LAND SURVEYING 1511 KYLYNN CT. MOUNT SHASTA, CA JANUARY 2021 SCALE: 1"=300' SHEET 1 OF 1 KANEGEO.ASC KANEMOS.GXD JOB NO. 673