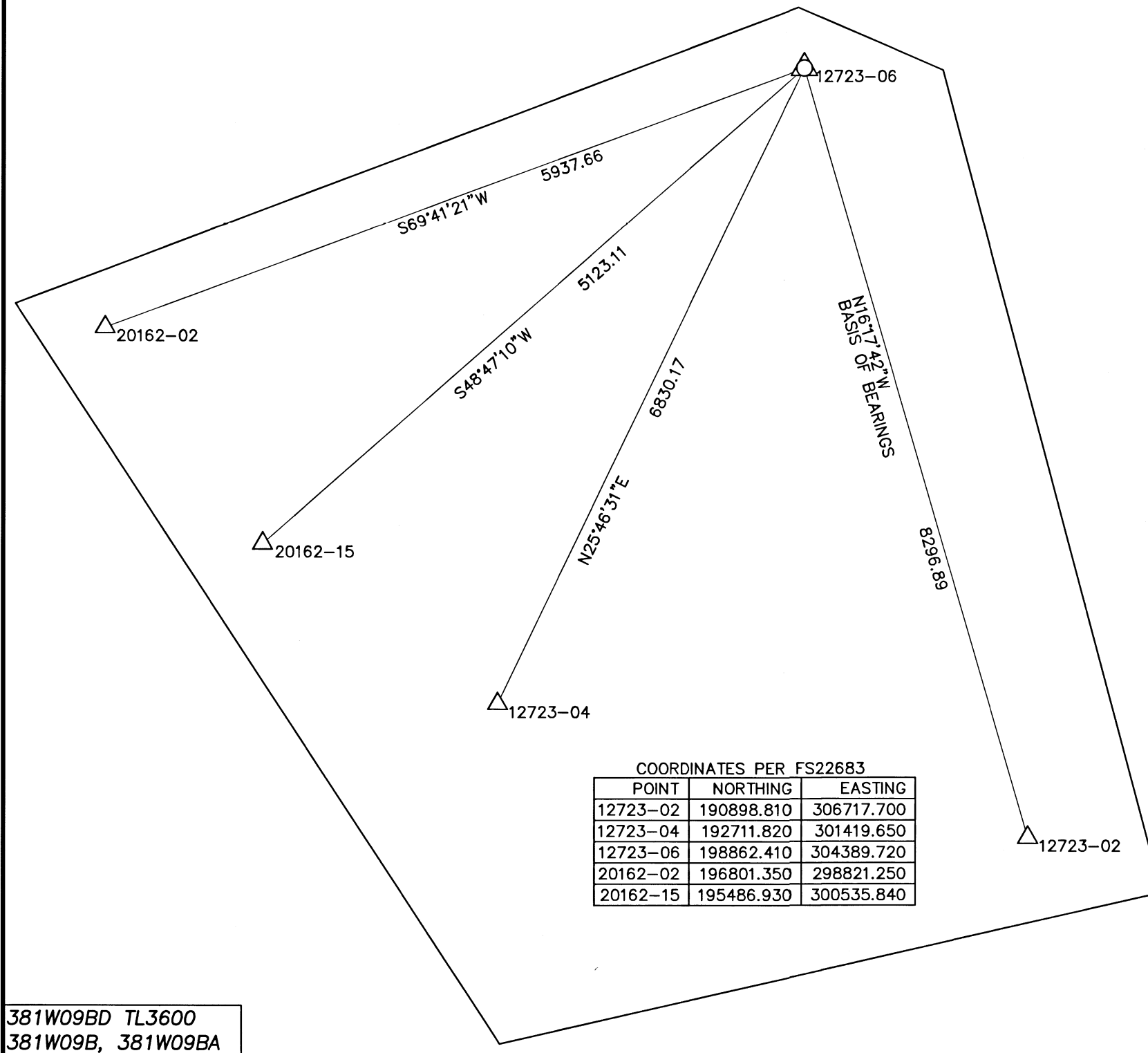
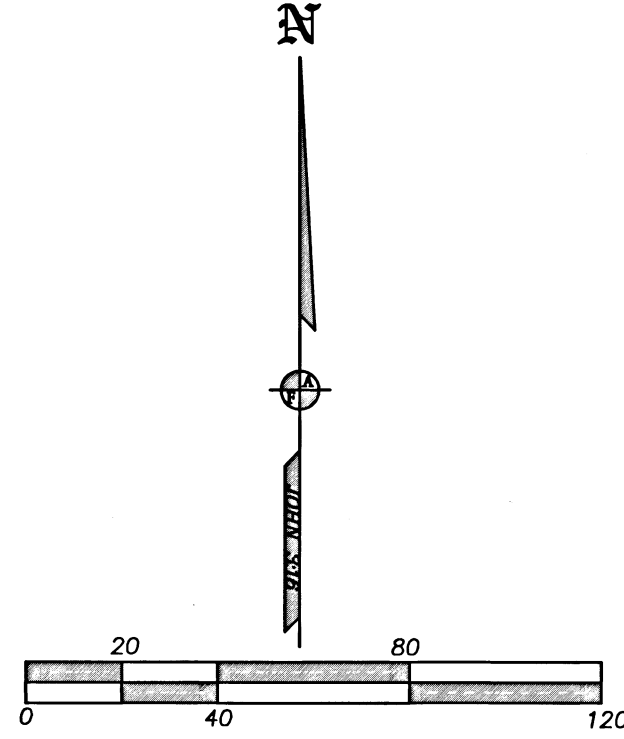
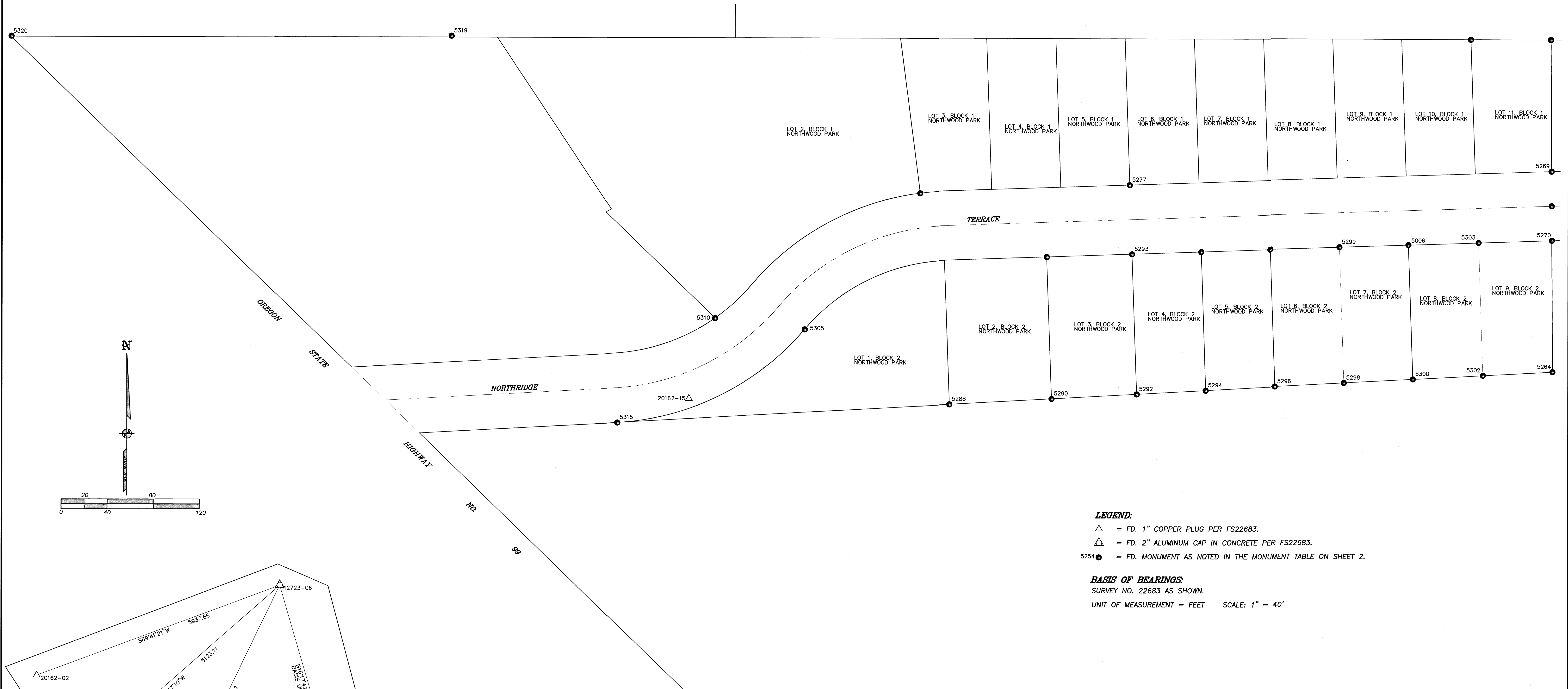


**SURVEY FOR:**  
ALMEDA FIRE VICTIMS  
PO BOX 1947  
PHOENIX, OR 97535

**SURVEY BY:**  
L.J. FRIAR & ASSOCIATES, P.C.  
CONSULTING LAND SURVEYORS  
PO BOX 1947  
PHOENIX, OR 97535  
PHONE: (541) 772-2782  
LJFRIARANDASSOCIATES@CHARTER.NET

**DATE:**  
NOVEMBER 30, 2020

**MAP OF SURVEY**  
**MONUMENT RECOVERY & BOUNDARY SURVEY**  
Located in Sections 9 & 10, T.38S, R.1W., W.M.  
& of Lot 21, Block 3, BARNUM SUBDIVISION &  
in the City of Phoenix & in Jackson County, Oregon



**LEGEND:**  
 △ = FD. 1" COPPER PLUG PER FS22683.  
 ▲ = FD. 2" ALUMINUM CAP IN CONCRETE PER FS22683.  
 5254 ● = FD. MONUMENT AS NOTED IN THE MONUMENT TABLE ON SHEET 2.

**BASIS OF BEARINGS:**  
 SURVEY NO. 22683 AS SHOWN.  
 UNIT OF MEASUREMENT = FEET SCALE: 1" = 40'

**SURVEY NARRATIVE TO COMPLY WITH O.R.S. 209.250**

**PURPOSE:** TO SURVEY AND MONUMENT THE CORNERS OF LOT 21, BLOCK 3 OF BARNUM SUBDIVISION AND TO RECOVER EXISTING MONUMENTS ON VARIOUS PROPERTIES DESTROYED BY THE 2020 ALMEDA FIRE.

**PROCEDURE:** PRIOR TO THE CLEANUP OF THE SUBJECT LOTS, USING TRIMBLE R10 G.P.S. RECEIVERS, MADE TIES TO MONUMENTS OF RECORD AS SHOWN ON SHEETS 1-3. AS SHOWN ON SHEET 3, DURING CLEANUP OPERATIONS, THE REAR MONUMENTS OF LOT 21, BLOCK 3 OF BARNUM SUBDIVISION WERE DESTROYED. I REMONUMENTED THEM IN THEIR PREVIOUSLY TIED POSITIONS. THE S.W. LOT CORNER POSITION WAS COMPUTED BY PROPORTIONATE METHOD AND MONUMENTED AS SHOWN. FOR THE REMAINING PROPERTIES ON SHEETS 1 & 2, EXISTING MONUMENTS WERE RECOVERED AND TIED IN CASE THEY ARE REMOVED DURING CLEANUP OPERATIONS ON THESE PROPERTIES. ALL COORDINATES ARE BASED ON THE COORDINATE BASIS PER FS22683.

381W09BD TL3600  
381W09B, 381W09BA  
381W09AB, 381W10CD

THIS PLAT WAS PREPARED USING AN EPSON SC-T5200 WITH EPSON T6925 INK ON MILANO JPC4M2 POLYESTER FILM.

REGISTERED PROFESSIONAL LAND SURVEYOR  
 JAMES E. HIBBS  
 JULY 17, 1988  
 2234  
 RENEWAL DATE: 6-30-21

FILED  
 Date: 12/23/2020 By: DJR  
 This Survey Consists Of:  
 3 sheet(s) Map  
 0 page(s) Narrative  
 JACKSON COUNTY SURVEYOR

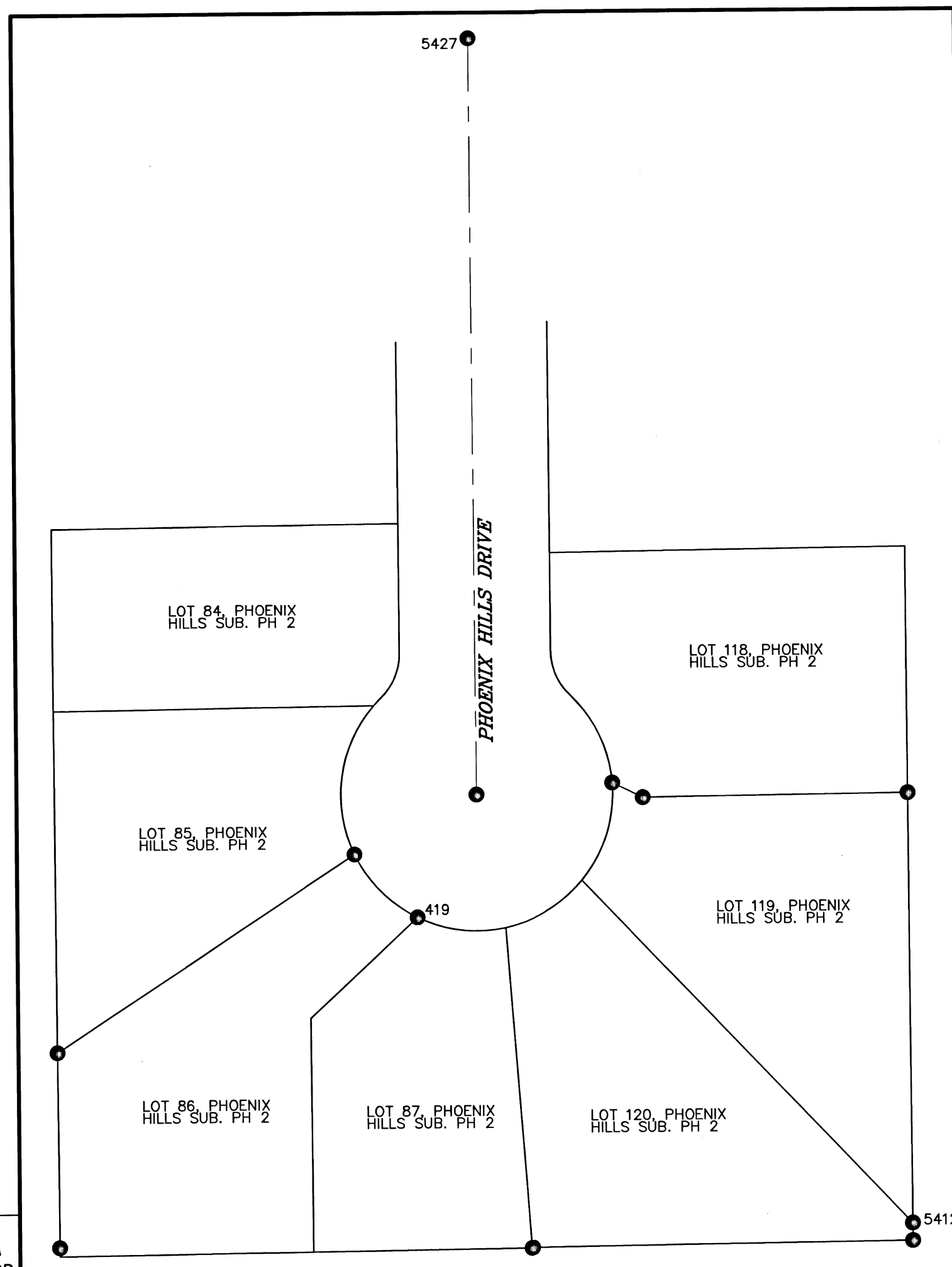
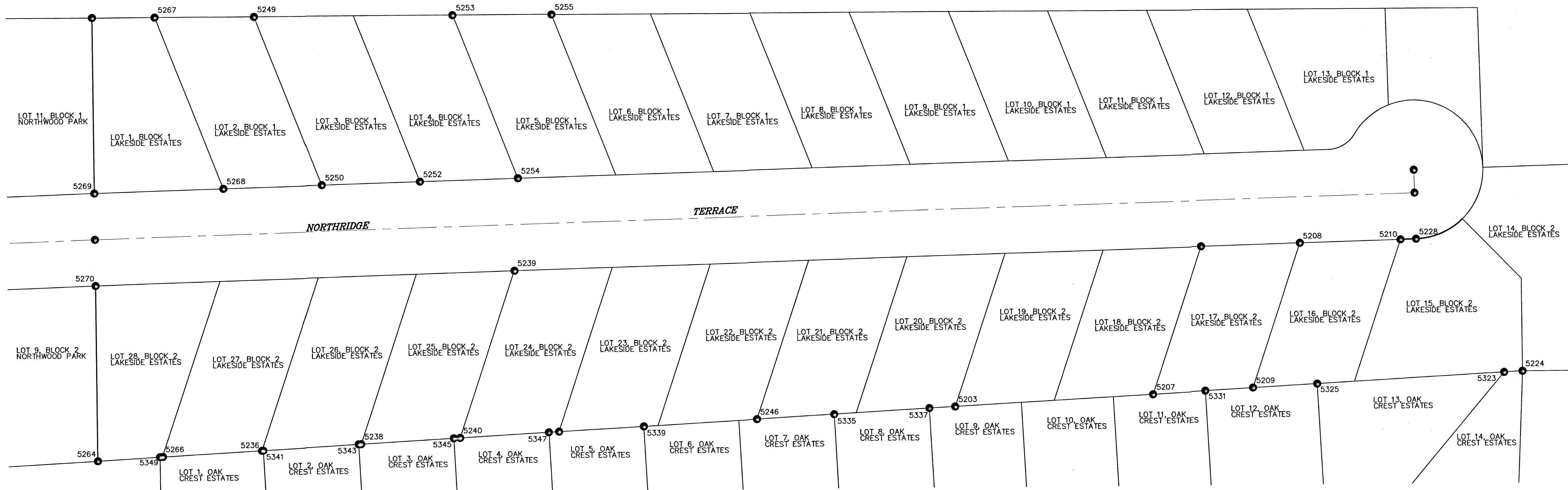
SHEET 1 OF 3  
 20201724

**SURVEY FOR:**  
ALMEDA FIRE VICTIMS  
PO BOX 1947  
PHOENIX, OR 97535

**SURVEY BY:**  
L.J. FRIAR & ASSOCIATES, P.C.  
CONSULTING LAND SURVEYORS  
PO BOX 1947  
PHOENIX, OR 97535  
PHONE: (541) 772-2782  
LJFRIARANDASSOCIATES@CHARTER.NET

**DATE:**  
NOVEMBER 30, 2020

**MAP OF SURVEY**  
**MONUMENT RECOVERY & BOUNDARY SURVEY**  
Located in Sections 9 & 10, T.38S, R.1W, W.M.  
& of Lot 21, Block 3, BARNUM SUBDIVISION &  
in the City of Phoenix & in Jackson County, Oregon



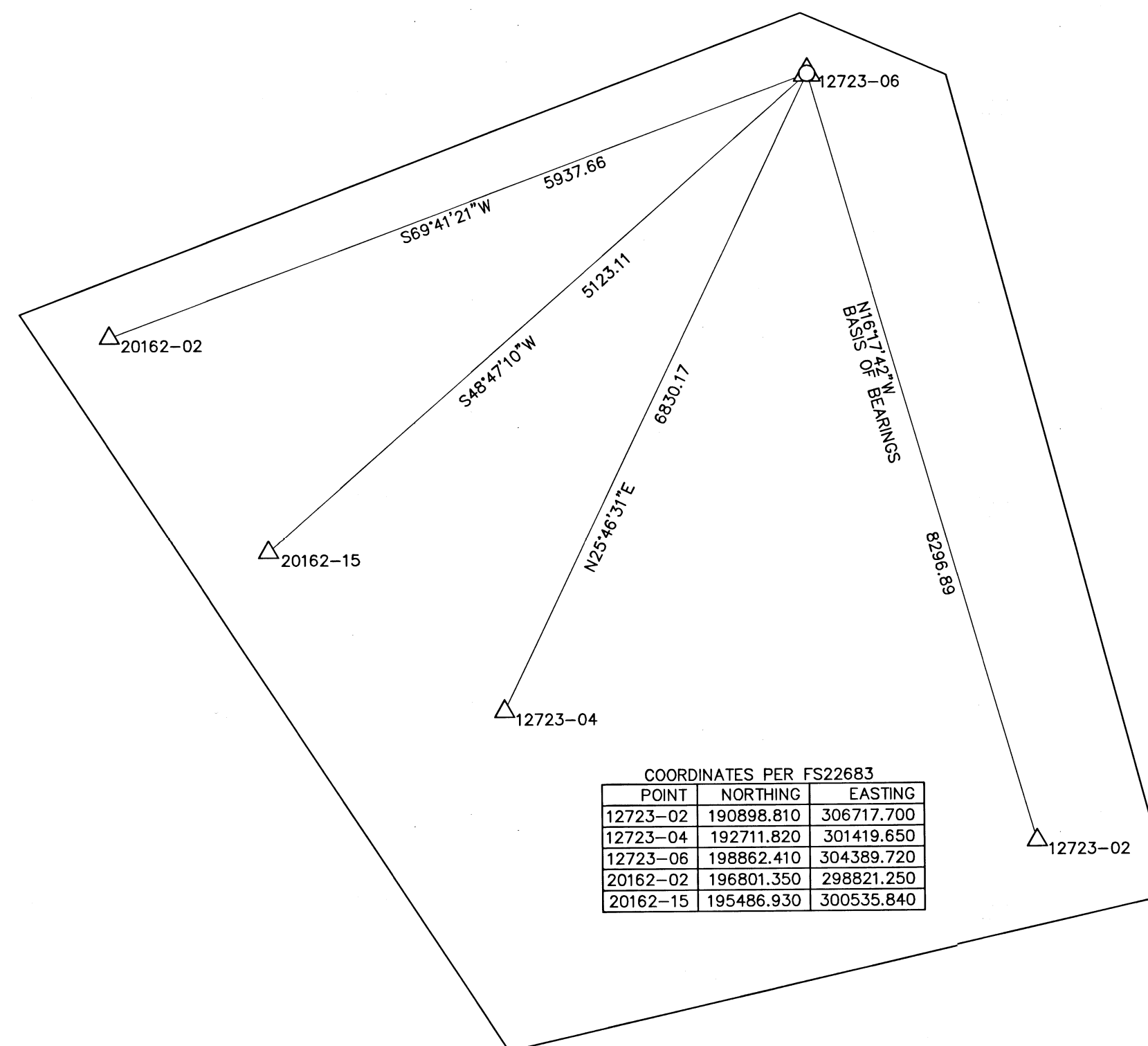
**LEGEND:**  
 △ = FD. 1" COPPER PLUG PER FS22683.  
 △ = FD. 2" ALUMINUM CAP IN CONCRETE PER FS22683.  
 5254 ● = FD. MONUMENT AS NOTED IN THE MONUMENT TABLE ON SHEET 2.

**BASIS OF BEARINGS:**  
 SURVEY NO. 22683 AS SHOWN.  
 UNIT OF MEASUREMENT = FEET SCALE: 1" = 40'

**SURVEY NARRATIVE TO COMPLY WITH O.R.S. 209.250**

**PURPOSE:** TO SURVEY AND MONUMENT THE CORNERS OF LOT 21, BLOCK 3 OF BARNUM SUBDIVISION AND TO RECOVER EXISTING MONUMENTS ON VARIOUS PROPERTIES DESTROYED BY THE 2020 ALMEDA FIRE.

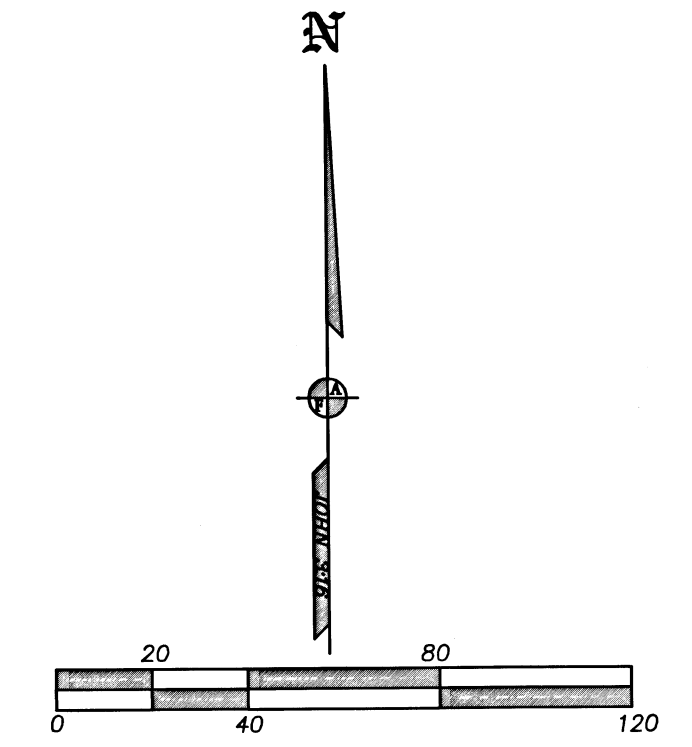
**PROCEDURE:** PRIOR TO THE CLEANUP OF THE SUBJECT LOTS, USING TRIMBLE R10 G.P.S. RECEIVERS, MADE TIES TO MONUMENTS OF RECORD AS SHOWN ON SHEETS 1-3. AS SHOWN ON SHEET 3, DURING CLEANUP OPERATIONS, THE REAR MONUMENTS OF LOT 21, BLOCK 3 OF BARNUM SUBDIVISION WERE DESTROYED. I REMONUMENTED THEM IN THEIR PREVIOUSLY TIED POSITIONS. THE S.W. LOT CORNER POSITION WAS COMPUTED BY PROPORTIONATE METHOD AND MONUMENTED AS SHOWN. FOR THE REMAINING PROPERTIES ON SHEETS 1 & 2, EXISTING MONUMENTS WERE RECOVERED AND TIED IN CASE THEY ARE REMOVED DURING CLEANUP OPERATIONS ON THESE PROPERTIES. ALL COORDINATES ARE BASED ON THE COORDINATE BASIS PER FS22683.



COORDINATES PER FS22683

POINT	NORTHING	EASTING
12723-02	190898.810	306717.700
12723-04	192711.820	301419.650
12723-06	198862.410	304389.720
20162-02	196801.350	298821.250
20162-15	195486.930	300535.840

MONUMENT TABLE				
PT#	NORTHING	EASTING	DESCRIPTION	SURVEY #
435	195229.380	300537.210	5/8PIN	22683
419	192066.538	306269.371	PIN&CAP	16993
5006	195621.224	301161.276	5/8PIN	NO RECORD
5007	191958.408	306149.768	PIN&CAP	16924
5203	195541.221	301843.589	PIN&CAP	10924
5206	195643.510	302004.330	5/8PIN	10924
5207	195548.363	301972.541	PIN&CAP	10924
5208	195645.308	302068.722	5/8PIN	10924
5209	195551.915	302037.623	PIN&CAP	10924
5210	195646.998	302134.154	PIN&CAP	10924
5224	195681.564	302212.938	5/8PIN	10924
5228	195647.484	302144.319	5/8PIN	10924
5229	195692.414	302143.193	ALUMCAP	22954
5232	195677.526	302143.603	METALCAPINCC	10924
5236	195516.587	301392.553	PIN&CAP	10924
5238	195520.124	301457.002	PIN&CAP	10924
5239	195631.928	301557.396	PIN&CAP12INDEEP	10924
5240	195523.604	301521.357	PIN&CAP	10924
5242	195527.419	301585.609	BENTPIN	10924
5246	195534.210	301714.709	PIN&CAP	10924
5249	195798.293	301389.347	PIN&CAP	10924
5250	195688.525	301432.544	PIN&CAP	10924
5252	195690.151	301496.327	PIN&CAP	10924
5253	195798.109	301518.435	PIN&CAP	10924
5254	195681.927	301501.115	PIN&CAP12INDEEP	10924
5255	195798.091	301582.899	PIN&CAP	10924
5263	195798.396	301283.967	BRASSCAPINCC	7091
5264	195510.689	301285.696	5/8PIN	7091
5266	195513.184	301327.789	PIN&CAP	10924
5267	195798.408	301324.652	PIN&CAP	10924
5268	195686.770	301368.689	PIN&CAP	10924
5269	195684.560	301284.671	PIN&CAP	7091
5270	195624.561	301285.053	PIN&CAP	7091
5271	195654.470	301284.890	METALCAPINCC	10924
5277	195672.184	300918.503	PIN&CAP	7091
5286	195798.328	301214.283	BENTPIN	7091
5288	195482.099	300761.991	PIN&CAP	7091
5290	195486.941	300850.746	PIN&CAP	7091
5291	195610.186	301086.437	BENTPIN-CAP	7091
5292	195490.930	300924.678	PIN&CAP	7091
5293	195612.183	300920.525	PIN&CAP	7091
5294	195494.225	300984.579	PIN&CAP	7091
5295	195614.292	300980.603	BRASSCAPINCC	7091
5296	195497.473	301044.551	5/8PIN	7091
5297	195616.228	301040.508	PIN&CAP	7091
5298	195500.764	301104.772	PIN&CAP12INDEEP	7091
5299	195618.263	301100.514	5/8PIN	7091
5300	195504.205	301164.444	PIN&CAP	7091
5301	195620.344	301160.448	BRASSCAPINCC	7091
5302	195507.383	301225.277	PIN&CAP	7091
5303	195622.419	301221.390	5/8PIN	7091
5305	195546.934	300636.342	PIN&CAP	7091
5310	195556.606	301558.532	PIN&CAP	7091
5315	195466.290	300473.661	PIN&CAP	7091
5319	195800.448	300329.400	PIN&CAP	10158
5320	195799.702	299947.328	5/8PIN	16199
5323	195560.755	302200.994	PIN&CAP	18096
5325	195554.161	302079.292	PIN&CAP	18096
5331	195550.158	302006.460	PIN&CAP	18096
5335	195536.894	301764.779	PIN&CAP	18096
5337	195540.431	301826.711	PIN&CAP	18096
5339	195530.423	301640.968	PIN&CAP	18096
5341	195516.403	301393.233	PIN&CAP	18096
5343	195520.205	301455.296	PIN&CAP	18096
5345	195523.436	301517.036	PIN&CAP	18096
5347	195526.943	301579.055	1/2PIN	18096
5349	195512.883	301326.006	5/8PIN	18096
5412	191964.087	306432.685	5/8PIN	16993
5414	192106.311	306431.851	PIN&CAP	16993
5415	192110.652	306334.069	PIN&CAP	16993
5417	191957.101	306306.492	PIN&CAP	16993
5421	192022.746	306149.544	PIN&CAP	16993
5422	192087.511	306248.535	PIN&CAP	16993
5423	192105.410	306344.191	PIN&CAP	16993
5427	192357.014	306288.097	5/8PIN	16993
5428	192106.939	306289.181	ALUMCAP	16993
5429	191958.473	306432.572	PIN&CAP	16993
5431	195665.170	300736.507	PLUG IN SW	NO RECORD



381W09BD TL3600  
381W09B, 381W09BA  
381W09AB, 381W10CD

THIS PLAT WAS PREPARED USING AN EPSON SC-T5200 WITH EPSON T6925 INK ON MILANO JPC4M2 POLYESTER FILM.

FILED  
Date: 12/3/2020 By: DR.

REGISTERED PROFESSIONAL LAND SURVEYOR  
*J. Friar*  
OREGON  
JULY 17, 1986  
JAMES E. HIBBS  
2234  
RENEWAL DATE: 6-30-21

This Survey Consists Of:  
3 sheet(s) Map  
0 page(s) Narrative  
JACKSON COUNTY SURVEYOR

SHEET 2 OF 3  
2020170

**SURVEY FOR:** ALMEDA FIRE VICTIMS  
PO BOX 1947  
PHOENIX, OR 97535

**SURVEY BY:** L.J. FRIAR & ASSOCIATES, P.C.  
CONSULTING LAND SURVEYORS  
PO BOX 1947  
PHOENIX, OR 97535  
PHONE: (541) 772-2782  
LJFRIARANDASSOCIATES@CHARTER.NET

**DATE:** NOVEMBER 30, 2020

### MAP OF SURVEY

MONUMENT RECOVERY & BOUNDARY SURVEY  
Located in Sections 9 & 10, T.38S, R.1W., W.M.  
& of Lot 21, Block 3, BARNUM SUBDIVISION &  
in the City of Phoenix & in Jackson County, Oregon

**LEGEND:**

- = FD. BRASS CAP IN CONCRETE PER BS.
- = FD. 5/8" IRON PIN PER BS.
- △ = FD. 1" COPPER PLUG PER FS22683.
- △ = FD. 2" ALUMINUM CAP IN CONCRETE PER FS22683.
- = SET 5/8" X 24" IRON PIN & PLASTIC CAP MKD. L.J. FRIAR & ASSOC.

BS = BARNUM SUBDIVISION (FS8254).  
ORJCO = OFFICIAL RECORDS OF JACKSON COUNTY, OREGON.  
RS = RESET 5/8" X 24" IRON PIN & PLASTIC CAP MKD. L.J. FRIAR & ASSOC.  
( ) = RECORD DATA PER BS.  
FS = FILED SURVEY #  
C1 = SEE COURSE DATA TABLE.

**BASIS OF BEARINGS:**  
SURVEY NO. 22683 AS SHOWN HEREON.  
UNIT OF MEASUREMENT = FEET SCALE: 1" = 40'

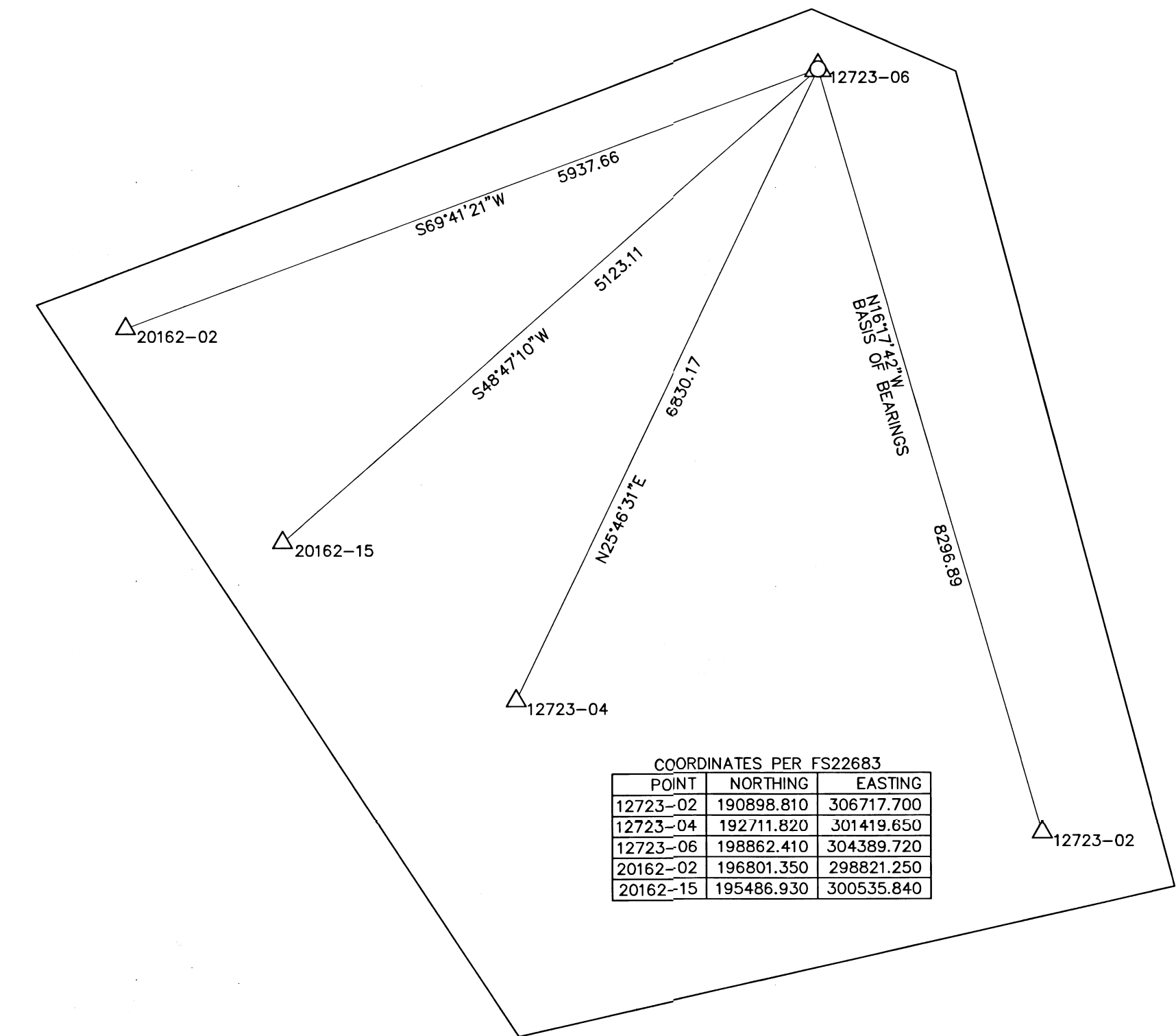
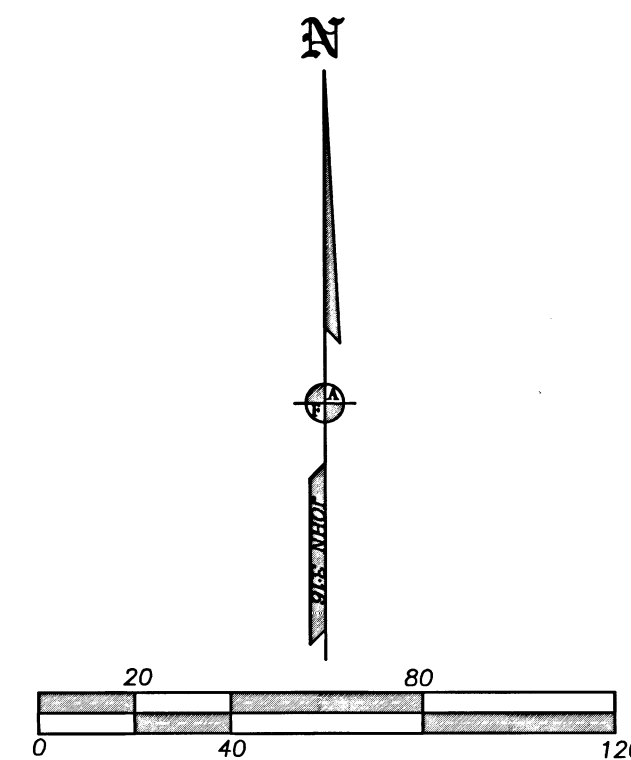
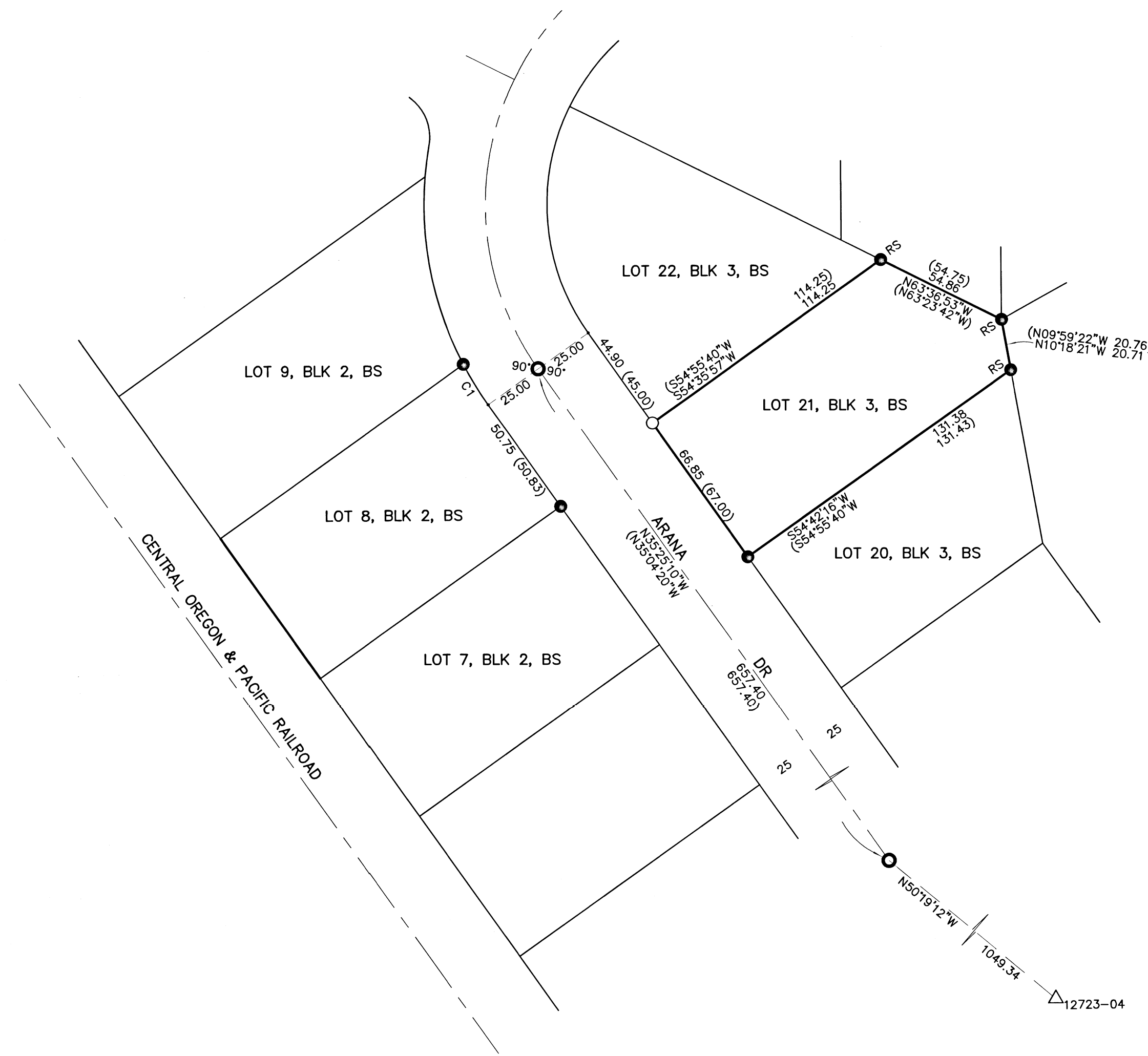
**SURVEY NARRATIVE TO COMPLY WITH O.R.S. 209.250**

**PURPOSE:** TO SURVEY AND MONUMENT THE CORNERS OF LOT 21, BLOCK 3 OF BARNUM SUBDIVISION AND TO RECOVER EXISTING MONUMENTS ON VARIOUS PROPERTIES DESTROYED BY THE 2020 ALMEDA FIRE.

**PROCEDURE:** PRIOR TO THE CLEANUP OF THE SUBJECT LOTS, USING TRIMBLE R10 G.P.S. RECEIVERS, MADE TIES TO MONUMENTS OF RECORD AS SHOWN ON SHEETS 1-3. AS SHOWN ON SHEET 3, DURING CLEANUP OPERATIONS, THE REAR MONUMENTS OF LOT 21, BLOCK 3 OF BARNUM SUBDIVISION WERE DESTROYED. I REMONUMENTED THEM IN THEIR PREVIOUSLY TIED POSITIONS. THE S.W. LOT CORNER POSITION WAS COMPUTED BY PROPORTIONATE METHOD AND MONUMENTED AS SHOWN. FOR THE REMAINING PROPERTIES ON SHEETS 1 & 2, EXISTING MONUMENTS WERE RECOVERED AND TIED IN CASE THEY ARE REMOVED DURING CLEANUP OPERATIONS ON THESE PROPERTIES. ALL COORDINATES ARE BASED ON THE COORDINATE BASIS PER FS22683.

COURSE DATA TABLE

NUM	DELTA	ARC	RADIUS	CHORD
C1	07°52'02" (07°52'03")	19.22 (19.22)	140.00 (140.00)	S31°29'10"E 19.21



COORDINATES PER FS22683

POINT	NORTHING	EASTING
12723-02	190898.810	306717.700
12723-04	192711.820	301419.650
12723-06	198862.410	304389.720
20162-02	196801.350	298821.250
20162-15	195486.930	300535.840

381W09BD TL3600  
381W09B, 381W09BA  
381W09AB, 381W10CD

THIS PLAT WAS PREPARED USING AN EPSON SC-T5200 WITH EPSON T6925 INK ON MILANO JPC4M2 POLYESTER FILM.

REGISTERED PROFESSIONAL LAND SURVEYOR  
JAMES E. HIBBS  
RENEWAL DATE: 6-30-21

FILED  
Date 12/23/2020 By DE  
This Survey Consists Of:  
3 sheet(s) Map  
0 page(s) Narrative  
JACKSON COUNTY SURVEYOR