

SURVEY FOR:
GP ENERGY
2520 FOOTHILL BLVD.
GRANTS PASS, OR 97526

SURVEY BY:
L.J. FRIAR & ASSOCIATES, P.C.
CONSULTING LAND SURVEYORS
PO BOX 1947
PHOENIX, OR 97535
PHONE: (541) 772-2782
LJFRIARANDASSOCIATES@CHARTER.NET

DATE:
OCTOBER 28, 2020

MAP OF SURVEY

Property Line Adjustment
Located in the S.E. 1/4 of Section 5,
T.38S, R.1W, W.M. Jackson County, Oregon
(JCDS File No. 439-20-00038-SUB)

JACKSON COUNTY DEVELOPMENT SERVICES
FILE NO. 439-20-00038-SUB

EXAMINED AND APPROVED THIS 9th DAY OF November, 2020.

BY: Kenneth D. Skyles
KENNETH D. SKYLES, Planner II

LEGEND:

- ⊙ = FD. COUNTY SURVEYOR'S BRASS CAPPED MONUMENT PER {YEAR} RE-ESTAB.
- = FD. 5/8" IRON PIN & PLASTIC CAP MKD. D.MCMAHAN LS1913 PER FS8874.
- ⦿ = FD. 2" ANGLE IRON. SEE FS8874.
- ★ = FD. 5/8" IRON PIN & PLASTIC CAP MKD. JACKSON CO PUBLIC WORKS PER FS15582.
- = SET 5/8" X 24" IRON PIN & PLASTIC CAP MKD. L.J. FRIAR & ASSOC.
- ☆ = SET 2.25" BRASS WASHER MKD. L.J. FRIAR & ASSOC. & 5" MAG SPIKE IN ASPHALT.

- FS = FILED SURVEY #
- ORJCO = OFFICIAL RECORDS OF JACKSON COUNTY, OREGON
- JCDR = JACKSON COUNTY DEED RECORDS.
- O- = CHAIN LINK FENCE.
- OPL = OLD PROPERTY LINE.
- APL = ADJUSTED PROPERTY LINE.
- ATL = ADJUSTED TAX LOT.
- WC = WITNESS CORNER MONUMENT.
- OPL = ORIGINAL PROPERTY LINE.
- () = RECORD DATA AS NOTED.
- () = RECORD DATA PER FS8874.
- NORSE = NATURAL GAS REGULATOR STATION EASEMENT PER DOC. 2016-034174, ORJCO.
- MRJCO = MISCELLANEOUS RECORDS OF JACKSON COUNTY, OREGON.
- 3WC = 3.00' WITNESS CORNER MONUMENT.
- 1WC = 1.00' WITNESS CORNER MONUMENT.
- 20WC = 20.00' WITNESS CORNER MONUMENT.
- 40WC = 40.00' WITNESS CORNER MONUMENT.

BASIS OF BEARINGS:

GEODETTIC NORTH BASED ON WGS 84 DATUM (G1762) (EPOCH 2005.0) ESTABLISHED BY G.P.S. OBSERVATIONS APPLIED TO THE WEST LINE AS SHOWN HEREON.

UNIT OF MEASUREMENT: FEET SCALE: 1" = 50'

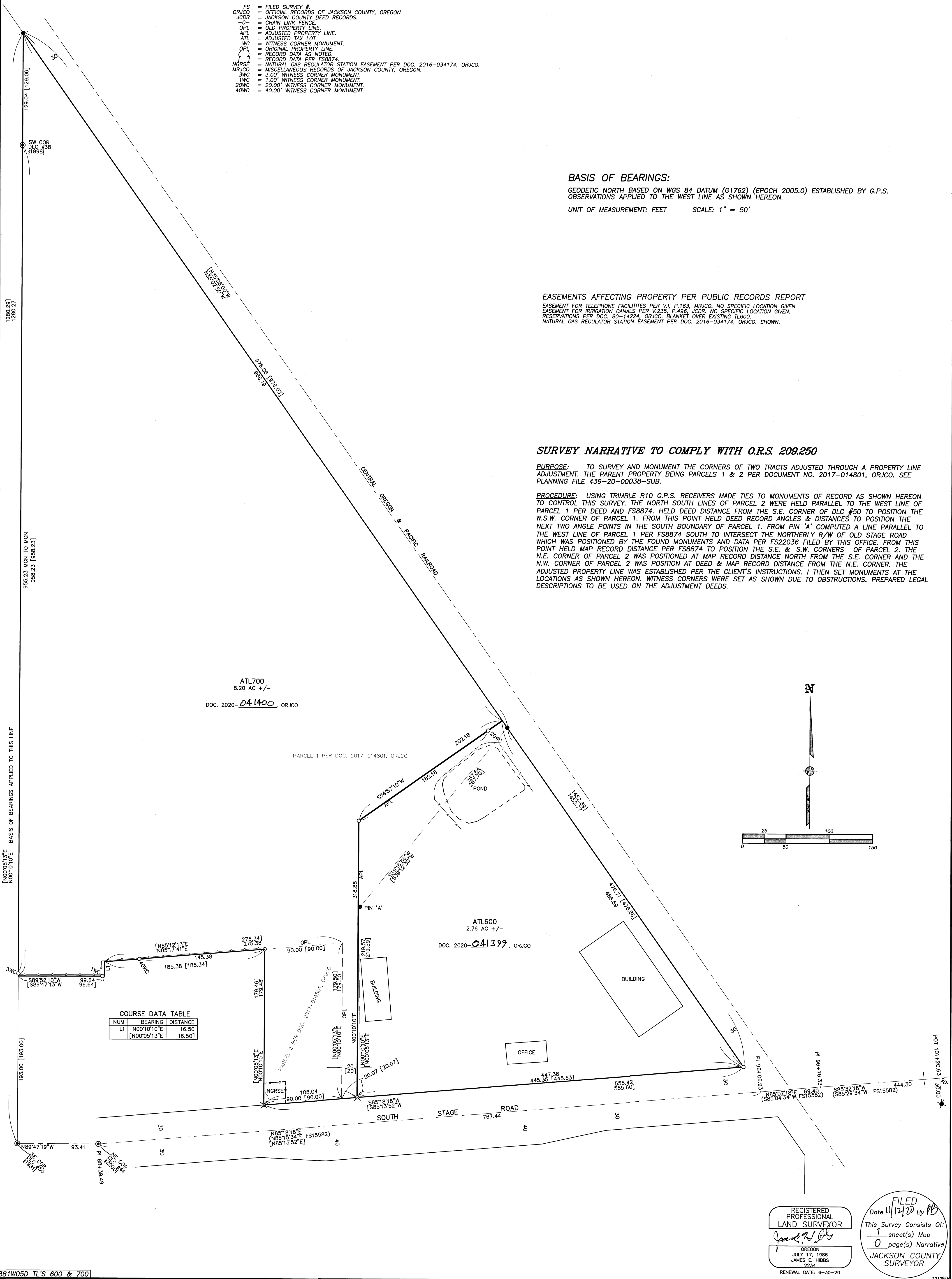
EASEMENTS AFFECTING PROPERTY PER PUBLIC RECORDS REPORT

EASEMENT FOR TELEPHONE FACILITIES PER V.I. P.163, MRJCO, NO SPECIFIC LOCATION GIVEN.
EASEMENT FOR IRRIGATION CANALS PER V.235, P.496, JCDR, NO SPECIFIC LOCATION GIVEN.
RESERVATION PER DOC. 80-14224, ORJCO, BLANKET OVER EXISTING TLEOD.
NATURAL GAS REGULATOR STATION EASEMENT PER DOC. 2016-034174, ORJCO, SHOWN.

SURVEY NARRATIVE TO COMPLY WITH O.R.S. 209.250

PURPOSE: TO SURVEY AND MONUMENT THE CORNERS OF TWO TRACTS ADJUSTED THROUGH A PROPERTY LINE ADJUSTMENT. THE PARENT PROPERTY BEING PARCELS 1 & 2 PER DOCUMENT NO. 2017-014801, ORJCO. SEE PLANNING FILE 439-20-00038-SUB.

PROCEDURE: USING TRIMBLE R10 G.P.S. RECEIVERS MADE TIES TO MONUMENTS OF RECORD AS SHOWN HEREON TO CONTROL THIS SURVEY. THE NORTH SOUTH LINES OF PARCEL 2 WERE HELD PARALLEL TO THE WEST LINE OF PARCEL 1 PER DEED AND FS8874. HELD DEED DISTANCE FROM THE S.E. CORNER OF DLC #50 TO POSITION THE W.S.W. CORNER OF PARCEL 1. FROM THIS POINT HELD DEED RECORD ANGLES & DISTANCES TO POSITION THE NEXT TWO ANGLE POINTS IN THE SOUTH BOUNDARY OF PARCEL 1. FROM PIN 'A' COMPUTED A LINE PARALLEL TO THE WEST LINE OF PARCEL 1 PER FS8874 SOUTH TO INTERSECT THE NORTHERLY R/W OF OLD STAGE ROAD WHICH WAS POSITIONED BY THE FOUND MONUMENTS AND DATA PER FS22036 FILED BY THIS OFFICE. FROM THIS POINT HELD MAP RECORD DISTANCE PER FS8874 TO POSITION THE S.E. & S.W. CORNERS OF PARCEL 2. THE N.E. CORNER OF PARCEL 2 WAS POSITIONED AT MAP RECORD DISTANCE NORTH FROM THE S.E. CORNER AND THE N.W. CORNER OF PARCEL 2 WAS POSITIONED AT DEED & MAP RECORD DISTANCE FROM THE N.E. CORNER. THE ADJUSTED PROPERTY LINE WAS ESTABLISHED PER THE CLIENT'S INSTRUCTIONS. I THEN SET MONUMENTS AT THE LOCATIONS AS SHOWN HEREON. WITNESS CORNERS WERE SET AS SHOWN DUE TO OBSTRUCTIONS. PREPARED LEGAL DESCRIPTIONS TO BE USED ON THE ADJUSTMENT DEEDS.



COURSE DATA TABLE

NUM	BEARING	DISTANCE
L1	N00°10'10"E	16.50
L1	N00°05'13"E	16.50

REGISTERED
PROFESSIONAL
LAND SURVEYOR
James E. Hibbs
OREGON
JULY 17, 1986
JAMES E. HIBBS
2234
RENEWAL DATE: 6-30-20

FILED
Date 11/12/20 By PK
This Survey Consists Of:
1 sheet(s) Map
0 page(s) Narrative
JACKSON COUNTY
SURVEYOR