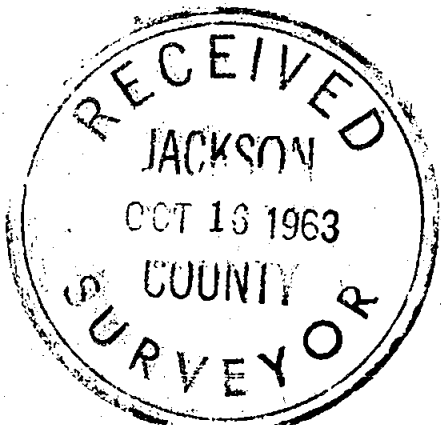
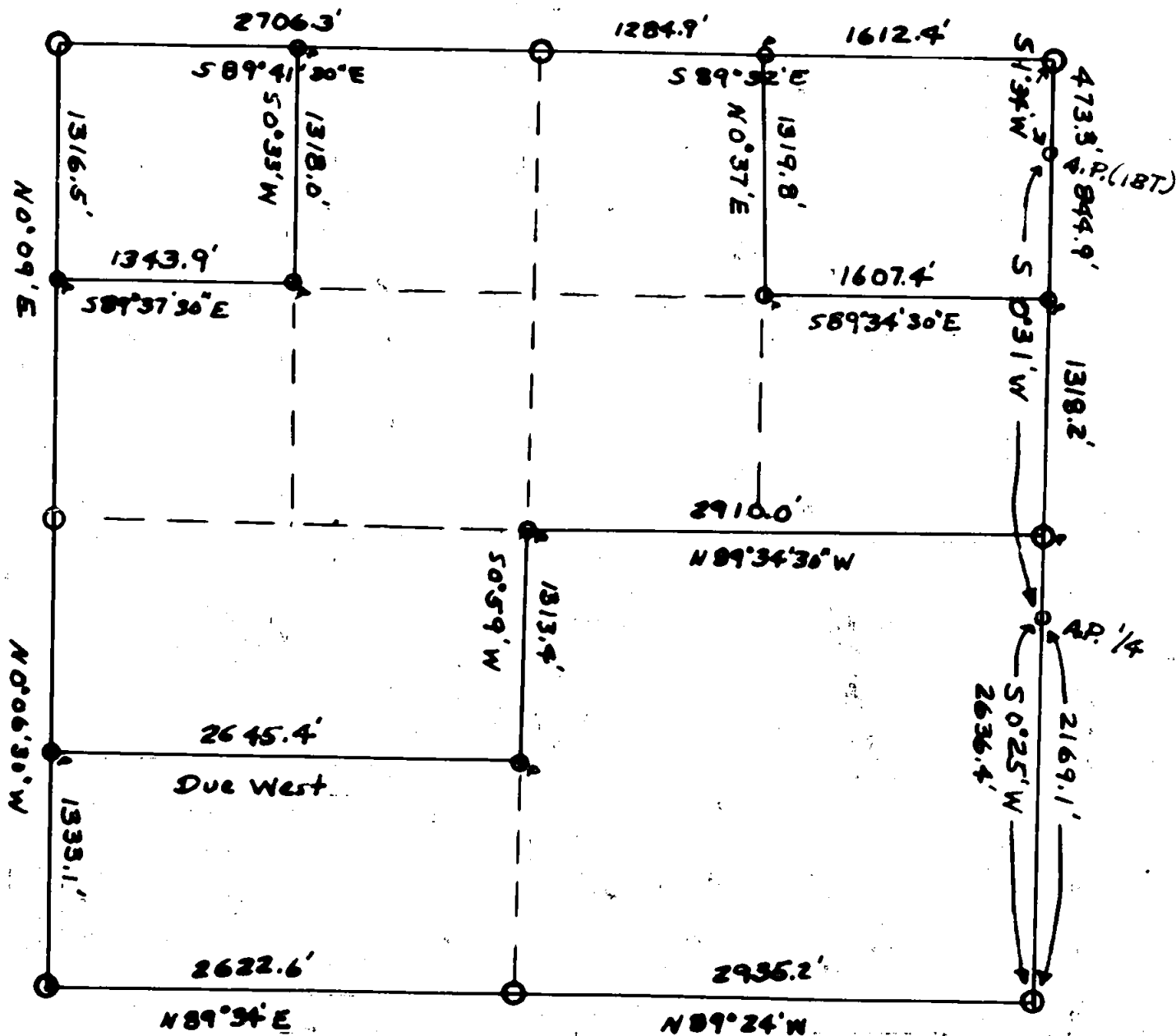


S. 12, T. 34S, R. 2E. W. M.



REGISTERED
OREGON
LAND SURVEYOR

D.A. Smeltzer

OCTOBER 24, 1963
DUANE A. SMELTZER
461

Scale 1" = 1000'
10-9-63
P - 2 1/4" Iron Pipe

23

2317

DRYME 7 ZWEIFTEN
OCTOBER 17 1954

DEAD END
O B E C O A
RECEIVED

RECEIVED

SECTION OF THE
DIRECTOR OF THE
OFFICE OF THE
RECORDS AND COMMUNICATIONS OF THE
DEPARTMENT OF THE ARMY
WASHINGTON, D. C.
RECEIVED
OCTOBER 17 1954
RECEIVED

Butte Falls, Oregon
October 21, 1963

County Surveyor
Jackson County Court House
Medford, Oregon

Dear Sir;

Referring to survey #2317 recorded 10-16-63, please
attach this BT information. (Sec. 12, T34S, R2E, NW.)

Set Center $\frac{1}{4}$ section Hub by intersection of lines from
N-S & E-W $\frac{1}{4}$ corners. Set 2"x4' pipe

Scribed RS 461 BT

5" W. Fir	Due S	35.6'	RS 461
24" W. Fir	N 14°W	25.5'	12

Sincerely Yours,

Dwaine Smetzer

(3)

Object: To mark lines and set corners of $S\frac{1}{2}SW\frac{1}{4}$ & $SE\frac{1}{4}$.

Beginning at S1/16 between 11&12 thence Due East 2645.4' to Center South 1/16 set on N-S centerline between $C\frac{1}{4}$ Hub and $S\frac{1}{4}$ corner at midpoint.

Set:

Scribed RS 461 BT	2"x4' pipe
10" W. Fir $N54^{\circ}W$ 10.1'	12
6" D. Fir $S3^{\circ}E$ 24.3'	RS. 461
	CS 1/16

thence $N0^{\circ}59'E$ 1313.4' to $C\frac{1}{4}$ Hub, thence $S8^{\circ}34'30"E$ 2910.0' to $E\frac{1}{4}$ corner.

Finished survey and setting monuments on or about 10-3-63.

(2)

True East Line;-

Beginning at corner $\frac{1}{7}$, ran $S1^{\circ}34'W$ 473.3' to old Original NE. corner Angle Point as established by one BT., thence East Line runs $S0^{\circ}31'W$ 2630.3' to old Original $E\frac{1}{4}$ corner Angle Point as established by on BT., thence $S0^{\circ}25'W$ 2169.1' to SE. corner. Set $E\frac{1}{2}$ corner Section 12 midway between NE. and SE. corners.

$S1^{\circ}34'W$	True bearing	NE. corner to NE. Angle Point.	
0.0	feet	NE. corner.	
473.3	"	Old Original NE. corner A.P.	
$S0^{\circ}31'W$	True bearing	NE.A.P. to old Original $E\frac{1}{4}$ corner Angle Point.	
1316.3	feet	Set N1/16 Section 12 only on line between 7&12.	
		Scribed RS 461 BT	Set:
		20" W. Fir $S60^{\circ}W$ 16.2'	2"x4' pipe
			N1/16/
			12 RS 461 /7
1340	"	Medco Divide Road	
2636.5	"	Set $E\frac{1}{4}$ corner Sec. 12 only	Set: 2"x4' pipe
		Scribed RS 461 BT	$\frac{2}{4}$ /
		6" W. Fir $S23^{\circ}W$ 19.3'	RS 461/ 7
		8" " $N55^{\circ}W$ 27.4'	12 /
3103.6	"	Old Original $E\frac{1}{4}$ corner Angle Point.	
$S0^{\circ}25'W$	True bearing	$E\frac{1}{4}$ corner A.P. to SE. corner.	
5272.9	feet	SE. corner.	

True South Line:-

Beginning at corner $\frac{12}{7}$, True bearing ran at $N8^{\circ}02'4''W$ to $S\frac{1}{4}$ corner.

0.0	feet	SE. corner.
2635.2	"	$S\frac{1}{4}$ "
$S8^{\circ}03'4''W$	$S\frac{1}{4}$ corner to	SW. corner.
0.0	$S\frac{1}{4}$ "	
1700	Medco Divide Road.	
2622.7	feet	SW. corner.

INTERIOR SUBDIVISION

Set Center $\frac{1}{4}$ corner (Hub) by intersection of lines between E,W and N,S $\frac{1}{4}$ corners. Object: To mark lines and corners of $NW\frac{1}{4}$, $NW\frac{1}{4}$, as established by intersection of lines run from midpoints on N&S and E&W lines of $NW\frac{1}{4}$.

Beginning at N1/16 between 11&12 ran True bearing $S8^{\circ}03'30''E$ along South line, 1343.9' to NW1/16 (Hub)

1	Scribed RS 461 BT	2"x4' pipe
	12" W. Fir $N10^{\circ}E$ 9.1'	12
	14" " $S55^{\circ}E$ 25.9'	RS 461
		NW1/16

thence ran True bearing $N0^{\circ}33'E$ 1317.0' along East line to W1/16 between 1&12.

Object: To mark lines and set corners of $NE\frac{1}{4}$, $NE\frac{1}{4}$ as established by intersection of lines run from midpoints on E&W $NE\frac{1}{4}$ lines and from points on N&S lines ($NE\frac{1}{2}$) set by proportional measurements; 20.00:45.10 chains North line and 20.00:44.01 chains South line.

Beginning at E1/16 between 1&12 ran True bearing $S0^{\circ}40'30''W$ along West line 1319.8' to NE1/16 (Hub) set 2"x4' pipe

Scribed RS 461 BT	NE1/16
7" D. Fir $N73^{\circ}W$ 47.9'	RS 461
24" W. Fir $N68^{\circ}E$ 14.5'	12

thence ran True bearing $S8^{\circ}03'30''E$ 1607.4' along South 1/16 line to the N1/16 Section 12 only between 7&12.

SUBDIVISION Section 12, T34S, R2E, Willamette Meridian.

Narative;-

On or about 6-17-63 began subdivision of Section 12, T34S, R2E, W. 4/ to separate Medford Corp. ground from U. S. Government lands and establish 1/16 corners and property lines.

Found following original evidence:-

SW corner stone and	2	BTs
W ¹ / ₄ " " "	2	"
NW " " "	3	"
N ¹ / ₄ " " "	2	"
NE " " "	2	"
(1) Original NE corner BT (Angle Point)		
(1) " E ¹ / ₄ " " (" ")		
SE corner stone and	2	BTs
S ¹ / ₄ " " "	2	"

All bearings calculated from Solar observations.

True West Line:-

Beginning at corner 11/12 True bearing ran at NO°06'30"W to W¹/₄ corner.

0.0 feet SW corner
 1333.1 " Set S1/16 cor. between 11&12 midway between SW & W¹/₄ corners
 Scribed RS 461 BT Set
 5" W. Fir N84°E 14.6' 2"x4' pipe
 6" D. Fir N70°W 5.6' S
 11 RS 461 12
 1/16

2666.3 " W¹/₄ corner True bearing W¹/₄ corner to NW corner.

0.0 feet W¹/₄ corner
 1316.6 " Set N1/16 between 11&12 midway between NW & W¹/₄ corners.
 Scribed RS 461 BT Set
 5" W. Fir S50°E 11.5' 2"x4' pipe
 7" " S54°W 3.3' N
 11 RS 461 12
 1/16

2633.1 " NW corner

True North Line:-

Beginning at corner 11/12 True bearing ran at S89°41'30"E to N¹/₄ corner

0.0 feet NW corner
 1353.2 " Set W1/16 between 1&12 at midpoint. Set
 14" W. Fir S52°E 42.0' 2"x4' pipe
 13" " N16°E 25.1' 1
 Scribed RS 461 BT W RS 461 1/16
 12

2706.3 " N¹/₄ corner True bearing N¹/₄ to NE corner.

0.0 feet N¹/₄ corner
 1284.9 " Set E1/16 between 1 & 12 by 20.00:45.10 chains proportional measurement
 Scribed RS 461 BT Set
 5" W. Fir N10°E 30.5' 2"x4' pipe
 12" " S42°E 27.2' 1
 RS 461 E1/16
 12

2897.4 " NE corner.

Butte Falls, Oregon
October 10, 1963

County Surveyor
Jackson County Court House
Medford, Oregon

Dear Sir;

Please record the following information pertaining
to the surveys of the United States Public Lands.

Subdivision and Monumentation of portions of
Section 12, T34S, R2E, W.1.

Sincerely Yours,

REGISTERED
OREGON
LAND SURVEYOR

Da. Smeltzer

OCTOBER 24 1963
DUANE A. SMELTZER
461

RECEIVED
JACKSON
OCT 13 1963
COUNTY
SURVEYOR