

2312

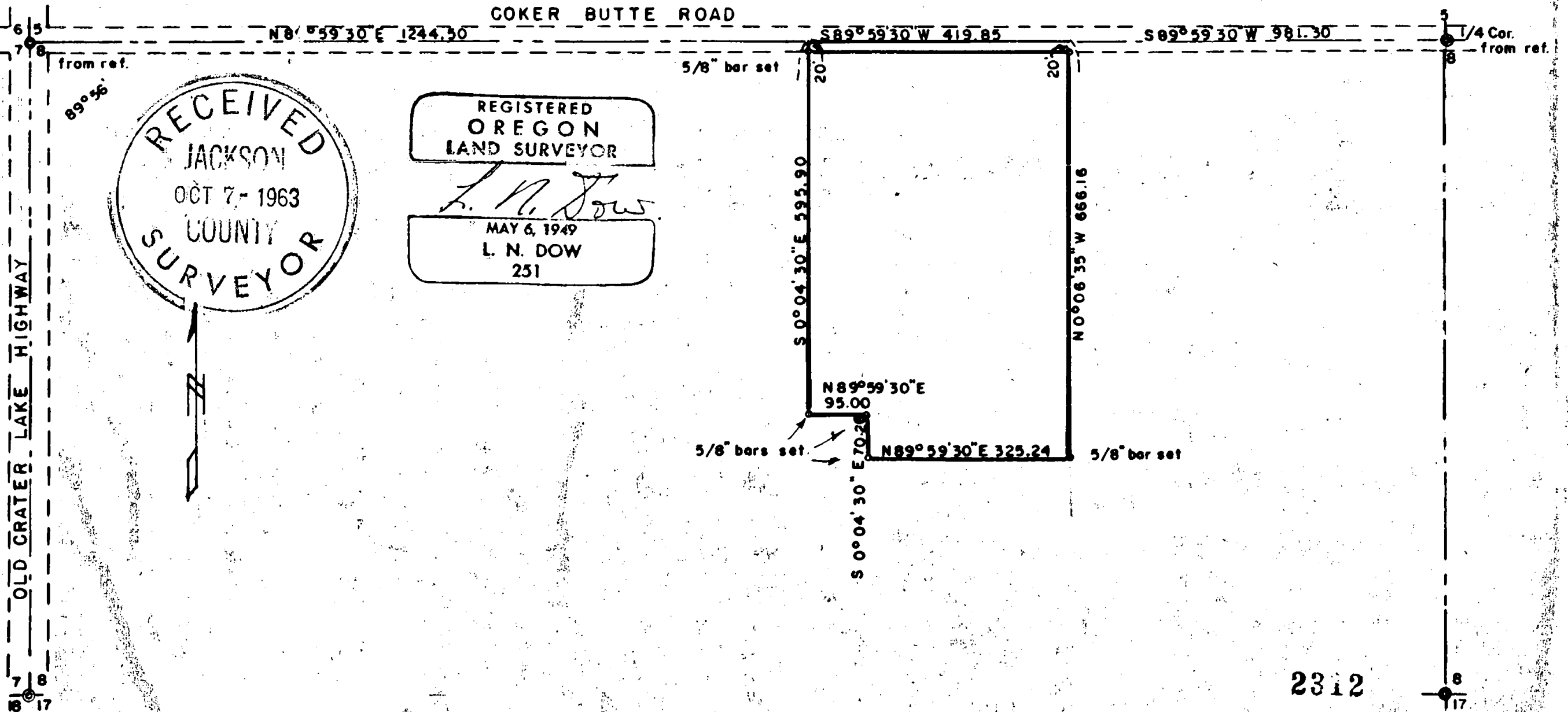
Survey for Louis Kula 3091 Table Rock Road, Medford, Oregon.

W.G. Beard 1702 Ridgeway, Medford, Oregon.

Locoted in northwest quarter of S 8, T. 37S. R. 1W. Jackson County, Oregon.

Meridian and all contrals from previous survey.

September 27, 1963 Scale 1" = 200'



RECEIVED
 JACKSON
 OCT 7 - 1963
 COUNTY
 SURVEYOR

REGISTERED
 OREGON
 LAND SURVEYOR
L. N. Dow
 MAY 6, 1949
 L. N. DOW
 251

2312

Written narrative to accompany plat for Survey No. 2312

Survey for W.G. Beard, 1702 Ridgeway, Medford, Oregon.

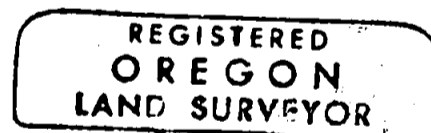
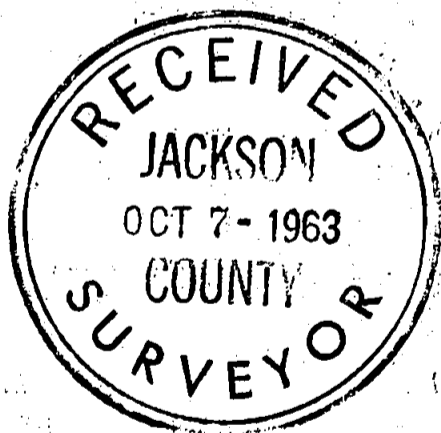
Survey made September 27, 1963

Meridian and all controls from previous survey

Scale 1" = 200'

From the Section corner common to Sections 5,6,7 and 8 we chained along the north line of Section 8, N 89°59'30"E, 1244.5 feet as reported in Deed Record and set a temporary point in the center of Coker Butte Road, We then chained N 89°59'30"E 419.85 feet to a point in the center of Coker Butte Road previously established Running S 89°59'30"W 981.30 feet from the 1/4 Section corner on the north line of said Section 8.

We then returned to the point 1244.5 feet east of the section corner and ran S 0° 04'30"E parallel to the west line of Section 8 a distance of 20.00 feet and set a 5/8" bar, then continue S 0°04'30"E 595.90 feet and set a 5/8" iron bar, then ran N 89°59'30"E 95.00 feet and set a 5/8" iron bar, then ran S 0°04'30"E 70.26 feet and set a 5/8" iron bar, then ran N 89°59'30"E parallel to the north line of Section 8 a distance of 325.24 feet and set a 5/8" iron bar as shown on the plat.



L. N. Dow

