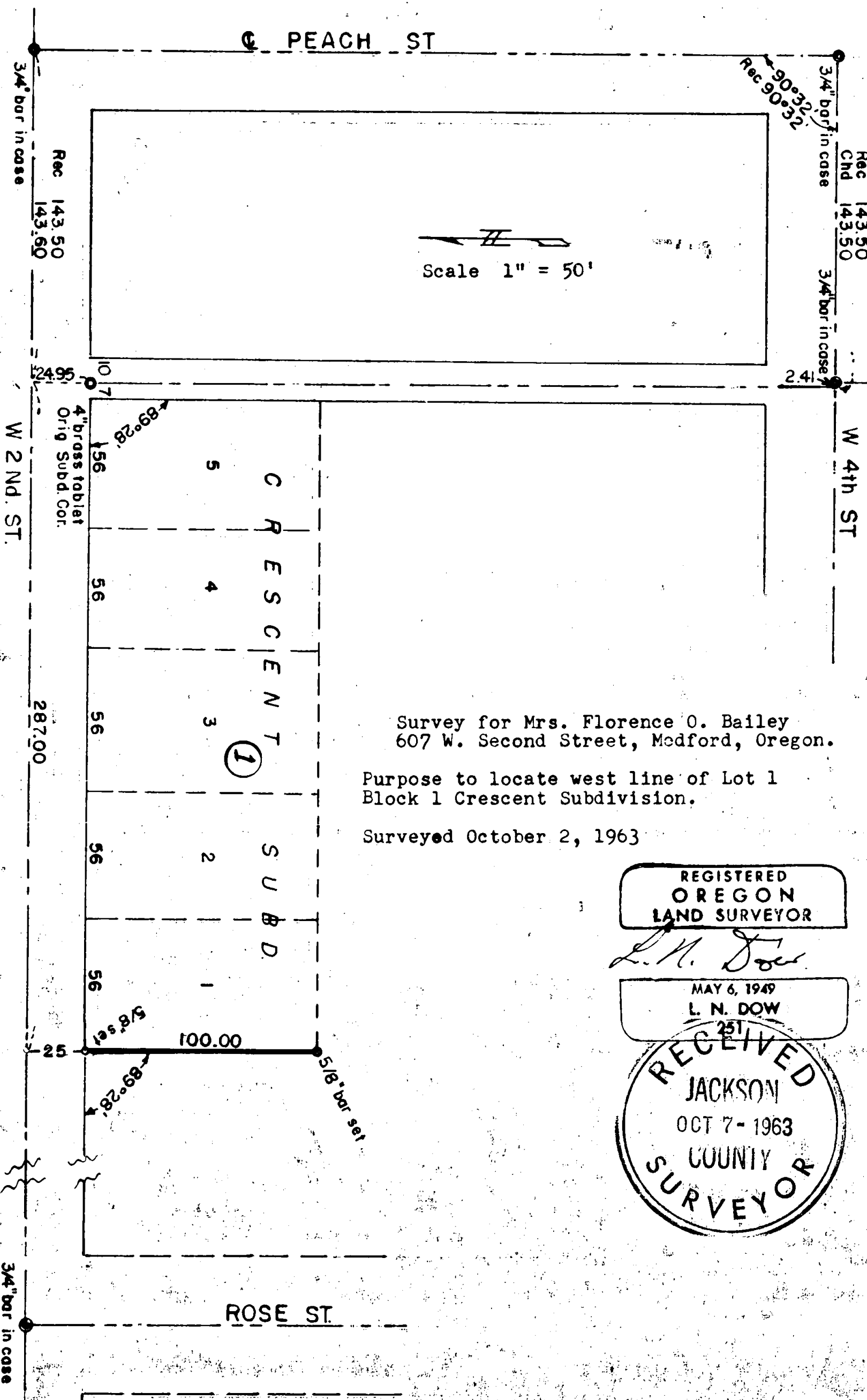


2311



Survey for Mrs. Florence O. Bailey
607 W. Second Street, Medford, Oregon.

Purpose to locate west line of Lot 1
Block 1 Crescent Subdivision.

Surveyed October 2, 1963

REGISTERED
OREGON
LAND SURVEYOR

L. N. Dow

MAY 6, 1949
L. N. DOW
251

RECEIVED
JACKSON
OCT 7 - 1963
COUNTY
SURVEYOR

2311

Written narrative to accompany plat for Survey NO. 2311

Survey for Mrs. Florence O. Bailey, 607 W Second St. Medford, Ore.

Dated October 2, 1963.

Purpose: to locate the west line of Lot 1 Block 1 Crescent Subdivision, in the City of Medford, Jackson County, Oregon.

Procedure:

Control monuments found and used;

3/4" bar in case at center 4 th and Quince.

3/4" bar in case at 4 th and Peach

3/4" bar in case at center Peach and Second St

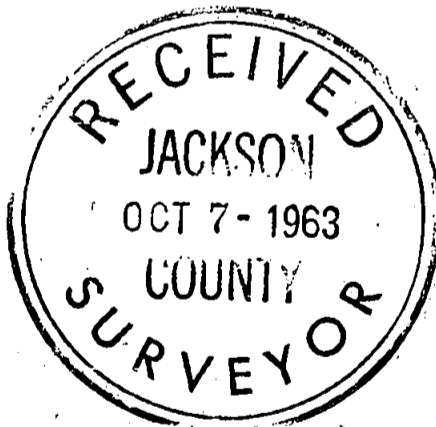
3/4" bar in case at center Rose St and Second St.

4" brass tablet on south line of Second Street 143.60 feet west of the center of Peach Street, which point shows on the official plat as being the northeast corner of Crescent Subdivision.

With the above controls we checked angular measurements and find them to be record.

we then measured along the centerline of W Second Street, 287.00 feet from the intersection of the east line of the subdivision as shown on the plat to set a temporary point, we then ran record angle and a distance of 25.00 feet and set a 5/8" bar for the northwest corner of Lot 1 Block 1 Crescent Subdivision.

Next by occupying the 4" brass tablet at the northeast corner of the Subdivision and sighting on a point at 4 th Street previously set for the east line (as shown) we ran southerly along that line a distance of 108.00 feet to the approximate centerline of the alley as it now exists, we then turned record angle to the west and ran a distance of 287.00 feet to a temporary point, then by setting on this temporary point we turned to hit the pin on the 2 Nd Street side of the property and by measuring 8.00 feet to the north we set a 5/8" bar for the southwest corner of Lot 1 Block 1 Crescent Subdivision as shown on the plat herewith.



L. N. Dow

