

NARRATIVE (in accordance with ORS 209.250)

DATE
April 2020

PURPOSE:
The purpose of this survey is to comply with ORS 209.140 by providing geodetic survey control data and reference points for Public Land Survey System (P.L.S.S.) survey monuments along East Vilas Road between State Highway No. 62 and Foothill Road which may be disturbed or destroyed by future road improvement projects.

PROCEDURE:
Static GPS positioning of the primary GPS control points no. 1 and 2 was performed utilizing Trimble R8 receivers and holding ORGN CORS stations "ASHL" and "CTPT" and Jackson County Surveyor's CORS station "NETRS". The CORS stations were held as control and a fully constrained least squares adjustment was performed on the resulting baselines to the control points. The remainder of the primary GPS control points were positioned by using points 1, 2, and "CTPT" as GPS base stations and control and performing fully constrained adjustments to the baselines collected on said remaining control points.

Using this primary control the P.L.S.S. corners and the found and set reference points shown in the details on sheets 2 and 3 were then positioned using a Trimble S7 total station. All data was collected using a Trimble TSC3 data collector and processing was performed with Trimble Business Center version 5.10 software.

HORIZONTAL DATUM
OCRS Grants Pass-Ashland Zone (See OAR 734-005-00015)
NAD 83 (2011) (EPOCH: 2010)
Units = International Feet

VERTICAL DATUM
NAVD 88 (Geoid 12A CONUS)
(Elevations shown are GPS derived orthometric heights)

BASIS OF BEARINGS:
Grid North (Meridian convergence angle = 0°20'07" at point #2)

Monument Recovery Survey

P.L.S.S. Corners on East Vilas Rd between Hwy 62 and Foothill Rd

Located in: SE 1/4 of Section 31, T36S R1W, W.M.
NE 1/4 of Section 6, T37S R1W, W.M.
SW 1/4 of Section 32, T36S R1W, W.M.
SE 1/4 of Section 32, T36S R1W, W.M.
NW 1/4 of Section 5, T37S R1W, W.M.
NE 1/4 of Section 5, T37S R1W, W.M.
SW 1/4 of Section 33, T36S R1W, W.M.
SE 1/4 of Section 33, T36S R1W, W.M.
NW 1/4 of Section 4, T37S R1W, W.M.
NE 1/4 of Section 4, T37S R1W, W.M.
SW 1/4 of Section 34, T36S R1W, W.M.
NW 1/4 of Section 3, T37S R1W, W.M.
Jackson County, Oregon



Scale: 1"=800'

Sheet Index
1. Primary GPS Control Map and Narrative
2. Details for P.L.S.S. monuments
3. Details for P.L.S.S. monuments

- LEGEND**
- △ = PRIMARY GPS CONTROL POINTS - FOUND OR SET MONUMENT AS NOTED IN TABLE
 - ORGN = OREGON REAL-TIME GPS NETWORK
 - CORS = CONTINUOUSLY OPERATING REFERENCE STATION
 - OCRS = OREGON COORDINATE REFERENCE SYSTEM
 - ORS = OREGON REVISED STATUTES
 - ACAP = ALUMINUM CAP
 - O.S.H.D. = OREGON STATE HIGHWAY DEPARTMENT
 - OAR = OREGON ADMINISTRATIVE RULES
 - FND = FOUND

RECEIVED
Date 5/1/2020 By PFB
This survey consists of:
3 sheet(s) Map
0 page(s) Narrative

JACKSON COUNTY SURVEYOR

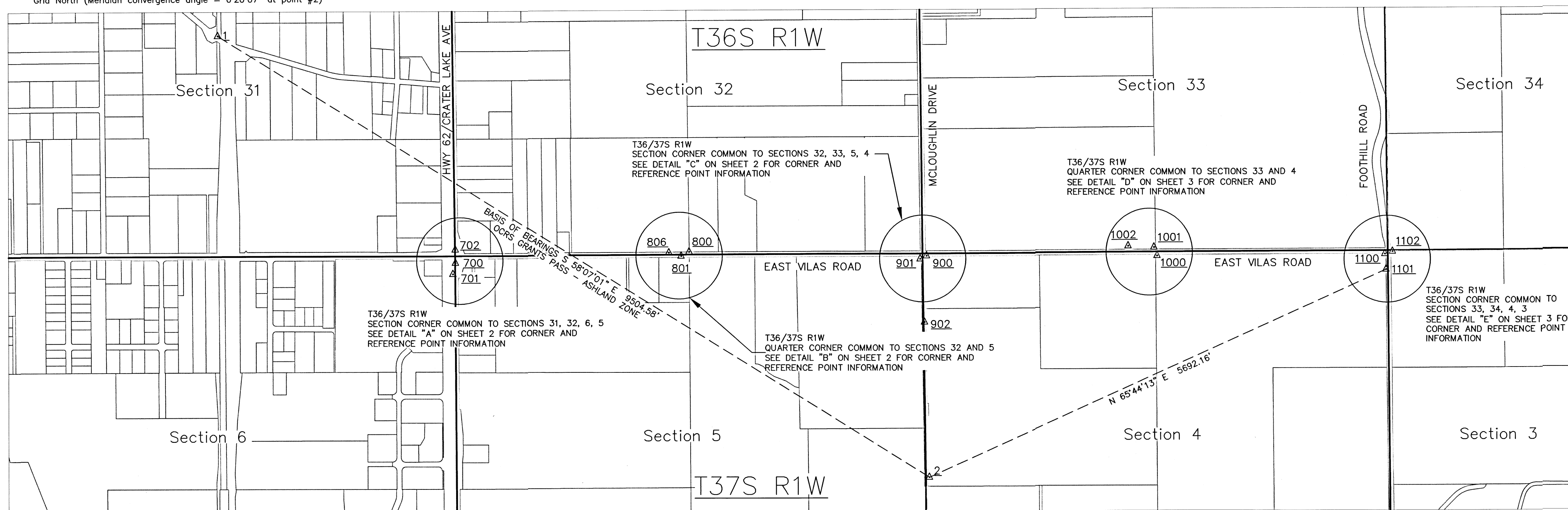
REGISTERED
PROFESSIONAL
LAND SURVEYOR

SCOTT FEIN

OREGON
NOVEMBER 10, 2010
SCOTT D. FEIN
83181

Expires 12/31/2021

Survey For:
Jackson County Surveyors Office
10 S. Oakdale Ave
Medford, OR 97501



PRIMARY STATIC GPS CONTROL POINT INFORMATION

PT. #	NAD 83 (2011) (EPOCH: 2010)			OCRS GRANTS PASS - ASHLAND			95% CONFIDENCE REGIONS				
	LATITUDE	LONGITUDE	HEIGHT	NORTHING	EASTING	ELEVATION	SEMI-MAJ.	SEMI-MIN.	ORIENT.	HEIGHT	
1	N 42°23'46.12163"	W 122°51'56.13968"	1209.81	235824.916	290396.787	1289.58	FND 2 INS. DIAMETER ACAP MARKED "ODOT CONTROL 10838-56", FLUSH IN AC	0.012	0.012	2°	0.010
2	N 42°22'56.08212"	W 122°50'08.98277"	1297.02	230804.705	298467.382	1376.69	SET 5/8 X 24 INS. REBAR WITH 2 INS. DIAMETER ACAP MARKED "JACKSON COUNTY SURVEYOR"	0.011	0.011	179°	0.012
3	N 42°22'36.08474"	W 122°53'38.19500"	1217.11	228693.680	282775.324	1296.85	ORGN CORS STA. "CTPT"	-	-	-	-
4	N 42°10'50.47300"	W 122°40'12.55241"	1998.51	157652.584	343804.873	2076.56	ORGN CORS STA. "ASHL"	-	-	-	-
5	N 42°19'18.49433"	W 122°52'39.71393"	1378.75	208713.359	282772.196	1458.19	JACKSON COUNTY SURVEYOR CORS STA. "NETRS"	-	-	-	-
700	N 42°23'20.49132"	W 122°51'20.37862"	1228.63	233245.091	293094.844	1308.37	SET 5/8 X 24 INS. REBAR WITH 2 INS. DIAMETER ACAP MARKED "JACKSON COUNTY SURVEYOR"	0.006	0.006	1°	0.007
701	N 42°23'19.25635"	W 122°51'20.72707"	1232.64	233119.901	293066.018	1312.38	SET 1 IN. DIAMETER BRASS DISC MARKED "CS", FLUSH IN CONCRETE PAD	0.007	0.007	12°	0.007
702	N 42°23'21.97724"	W 122°51'20.39684"	1229.16	233395.515	293092.630	1308.91	SET 5/8 X 24 INS. REBAR WITH 2 INS. DIAMETER ACAP MARKED "JACKSON COUNTY SURVEYOR"	0.007	0.007	170°	0.008
800	N 42°23'21.48899"	W 122°50'45.06377"	1246.51	233361.143	295744.552	1326.23	FND 5/8 IN. DIAMETER REBAR, 3 INS. DEEP	0.007	0.007	159°	0.009
801	N 42°23'21.03049"	W 122°50'46.27906"	1247.93	233314.202	295653.614	1327.65	SET 5/8 X 24 INS. REBAR WITH 2 INS. DIAMETER ACAP MARKED "JACKSON COUNTY SURVEYOR"	0.007	0.007	161°	0.008
806	N 42°23'21.41965"	W 122°50'48.13871"	1248.64	233352.801	295513.827	1328.36	FND 3 INS. DIAMETER BRASS DISC IN CONCRETE MARKED "O.S.H.D. PIPE 1993"	0.019	0.019	174°	0.023
900	N 42°23'20.84826"	W 122°50'09.17322"	1266.11	233311.885	298438.413	1345.80	SET 5/8 X 24 INS. REBAR WITH 2 INS. DIAMETER ACAP MARKED "JACKSON COUNTY SURVEYOR"	0.014	0.013	8°	0.016
901	N 42°23'20.51268"	W 122°50'10.14035"	1264.98	233277.486	298366.031	1344.67	SET 5/8 X 24 INS. REBAR WITH 2 INS. DIAMETER ACAP MARKED "JACKSON COUNTY SURVEYOR"	0.008	0.007	174°	0.009
902	N 42°23'13.44094"	W 122°50'09.55388"	1269.74	232561.818	298414.234	1349.43	SET 5/8 X 24 INS. REBAR WITH 2 INS. DIAMETER ACAP MARKED "JACKSON COUNTY SURVEYOR"	0.007	0.007	179°	0.008
1000	N 42°23'20.59573"	W 122°49'34.29959"	1295.46	233301.788	301055.738	1375.12	SET 5/8 X 24 INS. REBAR WITH 2 INS. DIAMETER ACAP MARKED "JACKSON COUNTY SURVEYOR"	0.013	0.012	8°	0.012
1001	N 42°23'21.54543"	W 122°49'34.75676"	1291.74	233397.728	301020.855	1371.40	SET 5/8 X 24 INS. REBAR WITH 2 INS. DIAMETER ACAP MARKED "JACKSON COUNTY SURVEYOR"	0.012	0.011	176°	0.009
1002	N 42°23'21.71932"	W 122°49'38.67884"	1288.51	233413.578	300726.409	1368.18	SET 5/8 X 24 INS. REBAR WITH 2 INS. DIAMETER ACAP MARKED "JACKSON COUNTY SURVEYOR"	0.014	0.012	167°	0.012
1100	N 42°23'20.60630"	W 122°48'59.81464"	1358.47	233318.447	303643.737	1438.08	SET 5/8 X 24 INS. REBAR WITH 2 INS. DIAMETER ACAP MARKED "JACKSON COUNTY SURVEYOR"	0.015	0.014	157°	0.021
1101	N 42°23'18.88006"	W 122°48'59.65545"	1355.77	233143.759	303656.747	1435.38	SET 5/8 X 24 INS. REBAR WITH 2 INS. DIAMETER ACAP MARKED "JACKSON COUNTY SURVEYOR"	0.012	0.012	154°	0.012
1102	N 42°23'20.86435"	W 122°48'58.66805"	1364.04	233345.095	303729.627	1443.65	SET 5/8 X 24 INS. REBAR WITH 2 INS. DIAMETER ACAP MARKED "JACKSON COUNTY SURVEYOR"	0.014	0.013	8°	0.010

- ASSESSOR MAPS**
- 36 1W 31D
 - 36 1W 32C
 - 36 1W 32D
 - 36 1W 33
 - 36 1W 34
 - 37 1W 06
 - 37 1W 05
 - 37 1W 04
 - 37 1W 03

Jackson County Surveyor
Scott Fein, PLS, CWRE

10 S. Oakdale Ave., Medford, OR 97501 (541) 774-6191

Field work was performed: Reviewed By: SDF 3/27/20
March 2020 OR 3/27/20

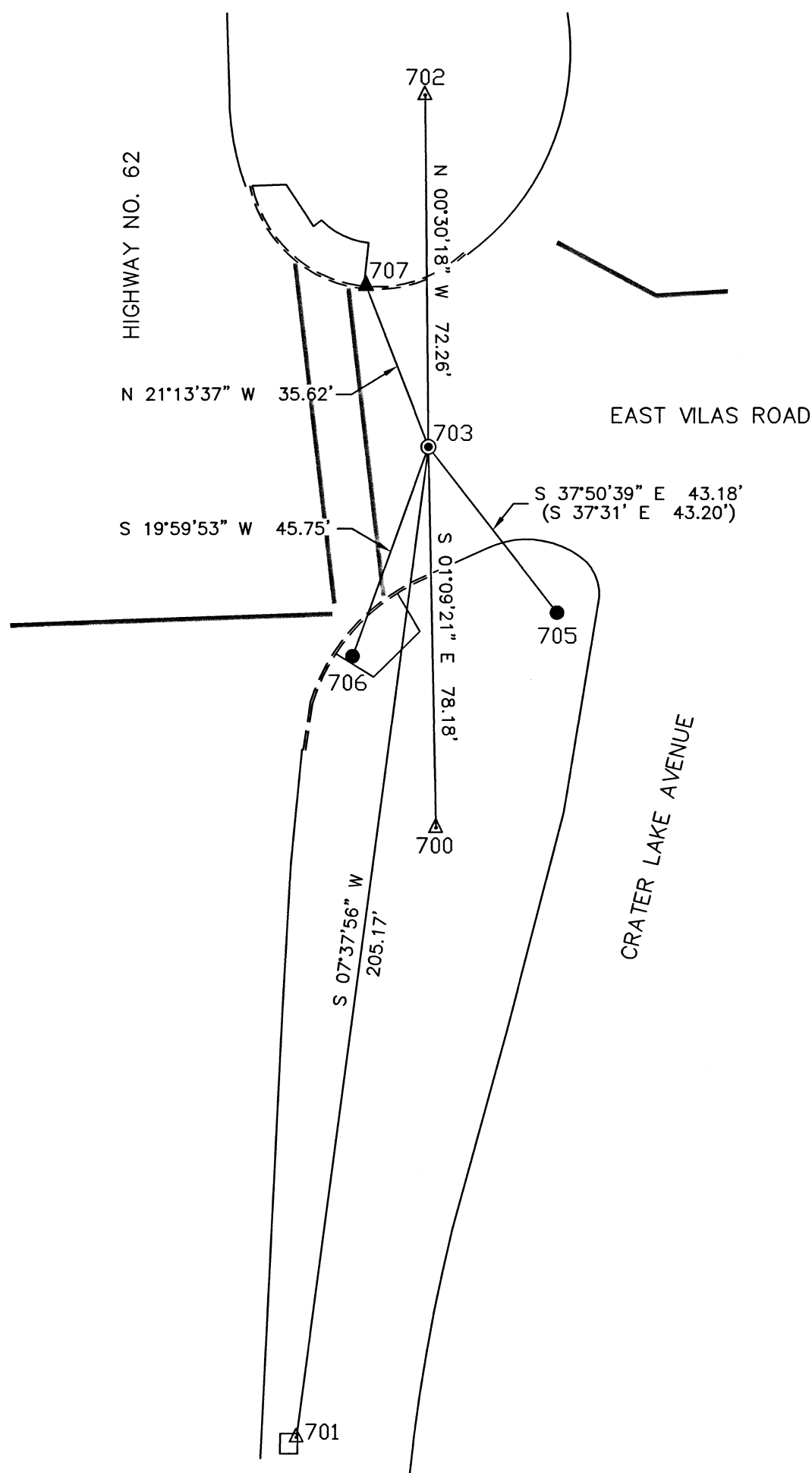
Field Crew: OR, JH CS Job File: N.A.

Drawn By: OR 3/27/20 Approved: SDF 3/27/20

sv-base vilas rd mos.DWG SHEET 1 OF 3

Detail "A"

Townships 36 & 37 South, Range 1 West
Section corner common to Sections 31, 32, 5, and 6
Point No. 703
GCDB 200700

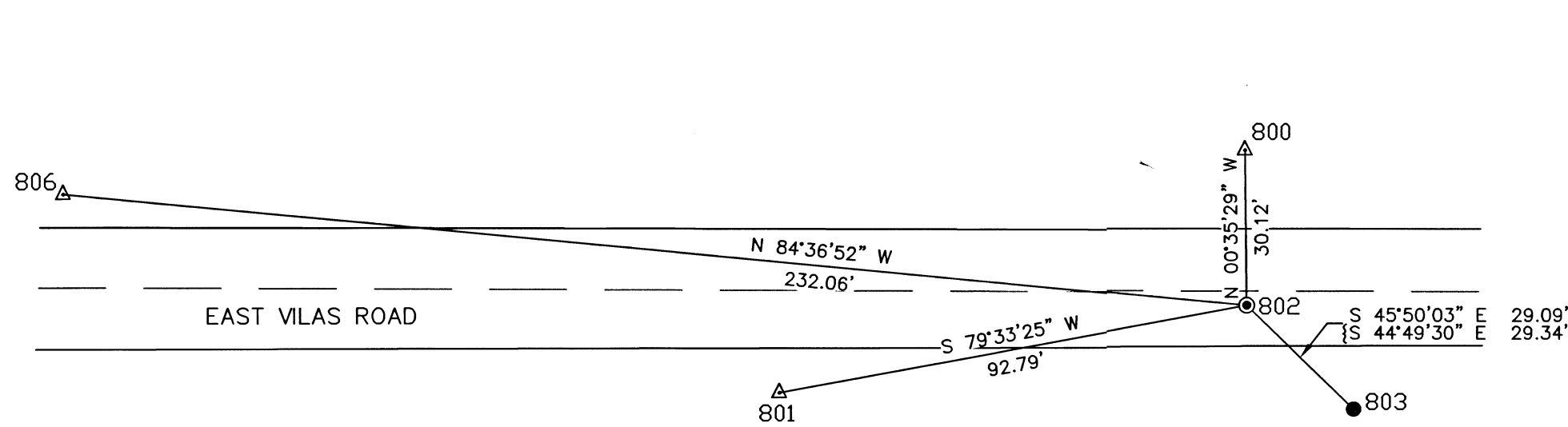


Point	Northing	Easting	Description
700	233245.091	293094.844	set 5/8in rbr w/acap jcs
701	233119.901	293066.018	set 1in brass disc "cs"
702	233395.515	293092.630	set 5/8in rbr w/acap jcs
703	233323.254	293093.267	found 3/4ins pin
705	233289.155	293119.759	found punchmark in mh rim
706	233280.265	293077.622	found 1in bd odot
707	233356.453	293080.372	set 1in brass disc "cs"

- 700) PRIMARY GPS CONTROL POINT - SEE SHEET 1 - SET 5/8 X 24 INS. REBAR WITH 2 INS. DIAMETER ALUMINUM CAP MARKED "JACKSON COUNTY SURVEYOR" IN DIRT MEDIAN AREA AT SE CORNER OF EAST VILAS ROAD AND HWY 62, 33 FEET SOUTH OF TRAFFIC SIGNAL POLE, 25 FEET WEST OF ASPHALT EDGE OF CRATER LAKE AVENUE
- 701) PRIMARY GPS CONTROL POINT - SEE SHEET 1 - SET 1 IN. DIAMETER BRASS DISC MARKED "CS" FLUSH IN NE CORNER OF CONCRETE PAD OF TRAFFIC SIGNAL BOX ON EAST SIDE OF HWY 62, 6.5 FEET EAST OF ASPHALT EDGE, APPROX. 200 FEET SOUTH OF CENTERLINE OF EAST VILAS ROAD
- 702) PRIMARY GPS CONTROL POINT - SEE SHEET 1 - SET 5/8 X 24 INS. REBAR WITH 2 INS. DIAMETER ALUMINUM CAP MARKED "JACKSON COUNTY SURVEYOR" IN DIRT MEDIAN AREA AT NE CORNER OF EAST VILAS ROAD AND HWY 62, 40 FEET NW OF STOP BAR, 35 FEET NORTH OF TRAFFIC SIGNAL BOX IN CURB LINE
- 703) FOUND 3/4 INS. DIAMETER PIN IN MONUMENT WELL PER JCS SECOND RE-ESTABLISHMENT DATED 1980 (NOTE: MONUMENT SET IN 1988 PER THIRD RE-ESTABLISHMENT HAS BEEN DESTROYED)
- 705) FOUND PUNCHMARK IN WEST RIM OF TELEPHONE MANHOLE PER SECOND RE-ESTABLISHMENT
- 706) FOUND 1 IN. DIAMETER BRASS DISC IN HANDICAP RAMP AT SE COR OF HWY 62 AND EAST VILAS ROAD, IN WEST SIDE OF RAMP, 3 FEET SE OF CURB, DISC MARKED "ODOT 404" (NO RECORD FOUND)
- 707) SET 1 IN. DIAMETER BRASS DISC IN CURB AT THE NE CORNER OF HWY 62 AND EAST VILAS ROAD, AT THE SE CORNER OF HANDICAP RAMP, 3 FEET EAST OF STOP BAR END, DISC MARKED "CS"

Detail "B"

Township 36 & 37 South, Range 1 West
Quarter corner common to Sections 32 & 5
Point No. 802
GCDB 240700

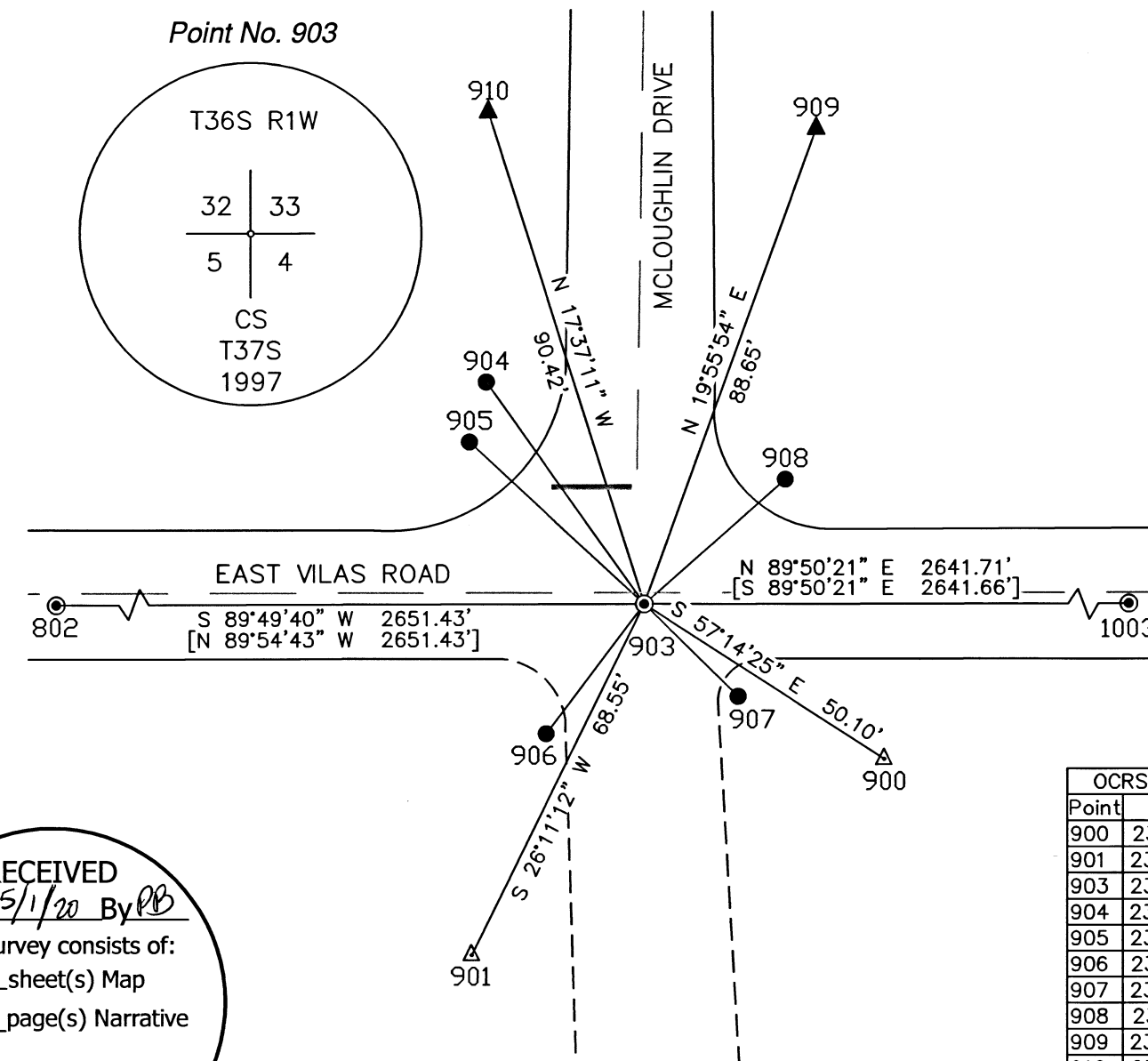


Point	Northing	Easting	Description
800	233361.143	295744.552	found 5/8in rbr
801	233314.202	295653.614	set 5/8in rbr w/acap jcs
802	233331.020	295744.863	found 2.5ins bd illegible
803	233310.752	295765.730	found 5/8in rbr
806	233352.801	295513.827	found odot bd

- 800) PRIMARY GPS CONTROL POINT - SEE SHEET 1 - FOUND 5/8 IN. DIAMETER REBAR, 3 INS. DEEP, ON NORTH SIDE OF EAST VILAS ROAD, 5 FEET NORTH OF EAST-WEST BEARING FENCE, 2 FEET EAST OF NORTH-SOUTH BEARING FENCE, PER FILED COUNTY SURVEY NO. 3383
- 801) PRIMARY GPS CONTROL POINT - SEE SHEET 1 - SET 5/8 X 24 INS. REBAR WITH 2 INS. DIAMETER ALUMINUM CAP MARKED "JACKSON COUNTY SURVEYOR" ON SOUTH SIDE OF EAST VILAS ROAD, 4 FEET NORTH OF EAST-WEST BEARING FENCE, APPROX. 72 FEET EAST OF MILE MARKER POST MARKED "MILE 2"
- 802) FOUND 2 1/2 INS. DIAMETER BRASS DISC WITH CENTER PUNCH (NO OTHER MARKINGS ARE LEGIBLE), 4 INS. DEEP IN ASPHALT, PER JCS SECOND RE-ESTABLISHMENT DATED 1979
- 803) FOUND 5/8 IN. DIAMETER REBAR, FLUSH, PER JCS SECOND RE-ESTABLISHMENT
- 806) PRIMARY GPS CONTROL POINT - SEE SHEET 1 - FOUND 3 INS. DIAMETER BRASS DISC FLUSH IN CONCRETE, MARKED "OREGON STATE HIGHWAY DIVISION", "PIPE", "TRIANGULATION STA." PER FILED COUNTY SURVEY NO. 17733.

Detail "C"

Township 36 & 37 South, Range 1 West
Section corner common to Sections 32, 33, 4, and 5
Point No. 903
GCDB 300100



- 900) PRIMARY GPS CONTROL POINT - SEE SHEET 1 - SET 5/8 X 24 INS. REBAR WITH 2 INS. DIAMETER ALUMINUM CAP MARKED "JACKSON COUNTY SURVEYOR" AT SE CORNER OF EAST VILAS ROAD AND MCLOUGHLIN DRIVE, 24 FEET EAST OF STOP SIGN
- 901) PRIMARY GPS CONTROL POINT - SEE SHEET 1 - SET 5/8 X 24 INS. REBAR WITH 2 INS. DIAMETER ALUMINUM CAP MARKED "JACKSON COUNTY SURVEYOR" AT SW CORNER OF EAST VILAS ROAD AND MCLOUGHLIN DRIVE, 18 FEET WEST OF "DEAD END" SIGN
- 903) FOUND 2 1/2 INS. DIAMETER BRASS DISC, 2 INS. DEEP IN ASPHALT, PER JCS FIFTH RE-ESTABLISHMENT DATED 1997, MARKED AS SHOWN
- 904) FOUND MAPLE TREE, NOW 26 INS. DIAMETER, PER JCS FIFTH RE-ESTABLISHMENT, MEASUREMENT IS TO CENTER OF TREE AT BASE
- 905) FOUND 2 1/4 INS. DIAMETER METAL POST AT FENCE CORNER PER JCS FIFTH RE-ESTABLISHMENT, MEASUREMENT IS TO CENTER OF POST AT TOP
- 906) FOUND 5/8 INS. DIAMETER REBAR WITH 1 1/2 INS. DIAMETER ALUMINUM CAP MARKED "JACKSON COUNTY SURVEYOR", 2 INS. DEEP, PER JCS FIFTH RE-ESTABLISHMENT
- 907) FOUND TACK IN LEAD IN TOP OF EAST END OF 24 INS. DIAMETER CONCRETE CULVERT PER JCS FIFTH RE-ESTABLISHMENT
- 908) FOUND 2 INS. ANGLE IRON, 15 INS. DEEP, PER JCS FIFTH RE-ESTABLISHMENT
- 909) SET 5/8 X 24 INS. REBAR WITH 2 INS. DIAMETER ALUMINUM CAP MARKED "JACKSON COUNTY SURVEYOR", 5 INS. DEEP, 27 FEET EAST OF PAINTED CENTERLINE OF MCLOUGHLIN DRIVE, 10 FEET WEST OF NORTH-SOUTH BEARING PEAR TREE ORCHARD ROW
- 910) SET 5/8 X 24 INS. REBAR WITH 2 INS. DIAMETER ALUMINUM CAP MARKED "JACKSON COUNTY SURVEYOR", FLUSH, 27 FEET WEST OF PAINTED CENTERLINE OF MCLOUGHLIN DRIVE, 10 FEET SOUTH OF 36 INS. DIAMETER MAPLE
- 802) QUARTER CORNER COMMON TO SECTIONS 32 AND 5, TOWNSHIP 36 & 37 SOUTH, RANGE 1 WEST - FOUND MONUMENT AS NOTED ON SHEET 2 DETAIL "B"
- 1003) QUARTER CORNER COMMON TO SECTIONS 33 AND 4, TOWNSHIP 36 & 37 SOUTH, RANGE 1 WEST - FOUND MONUMENT AS NOTED ON SHEET 3 DETAIL "D"

Point	Northing	Easting	Description
900	233311.885	298438.413	set 5/8in rbr w/acap jcs
901	233277.486	298366.031	set 5/8in rbr w/acap jcs
903	233338.996	298396.280	found 2.5ins bd
904	233377.854	298368.615	found 26ins dia maple
905	233367.379	298365.650	found 2.25ins dia metal post
906	233316.223	298379.082	found 5/8in rbr w/acap jcs
907	233322.839	298412.773	found lead+tack
908	233360.931	298421.071	found 2ins angle iron
909	233422.337	298426.501	set 5/8in rbr w/acap jcs
910	233425.177	298368.909	set 5/8in rbr w/acap jcs

POINT NUMBERS	BEARING	DISTANCE
903 - 904	N 35°26'56" W	47.70'
	[N 34°44' W]	[47.7']
903 - 905	N 47°10'50" W	41.76'
	[N 46°59' E]	[41.64']
903 - 906	S 37°03'35" W	28.54'
	[S 36°48' W]	[28.43']
903 - 907	S 45°35'23" E	23.09'
	[S 45°16' E]	[23.07']
903 - 908	N 48°29'52" E	33.10'
	[N 48°48' E]	[33.10']

RECEIVED
Date 5/1/20 By *SB*
This survey consists of:
3 sheet(s) Map
page(s) Narrative

JACKSON COUNTY SURVEYOR

LEGEND - SHEET 2

- = FOUND PUBLIC LAND SURVEY SYSTEM (P.L.S.S.) MONUMENT AS NOTED
- ▲ = PRIMARY GPS CONTROL POINTS - FOUND OR SET MONUMENT AS NOTED
- ▲ = SET CONTROL/REFERENCE POINT AS NOTED
- = FOUND MONUMENT AS NOTED
- JCS = JACKSON COUNTY SURVEYOR
- INS. = INCHES
- ACAP = ALUMINUM CAP
- () = RECORD PER JCS SECOND RE-ESTABLISHMENT DATED 1980
- { } = RECORD PER JCS SECOND RE-ESTABLISHMENT DATED 1979
- [] = RECORD PER JCS FIFTH RE-ESTABLISHMENT DATED 1997

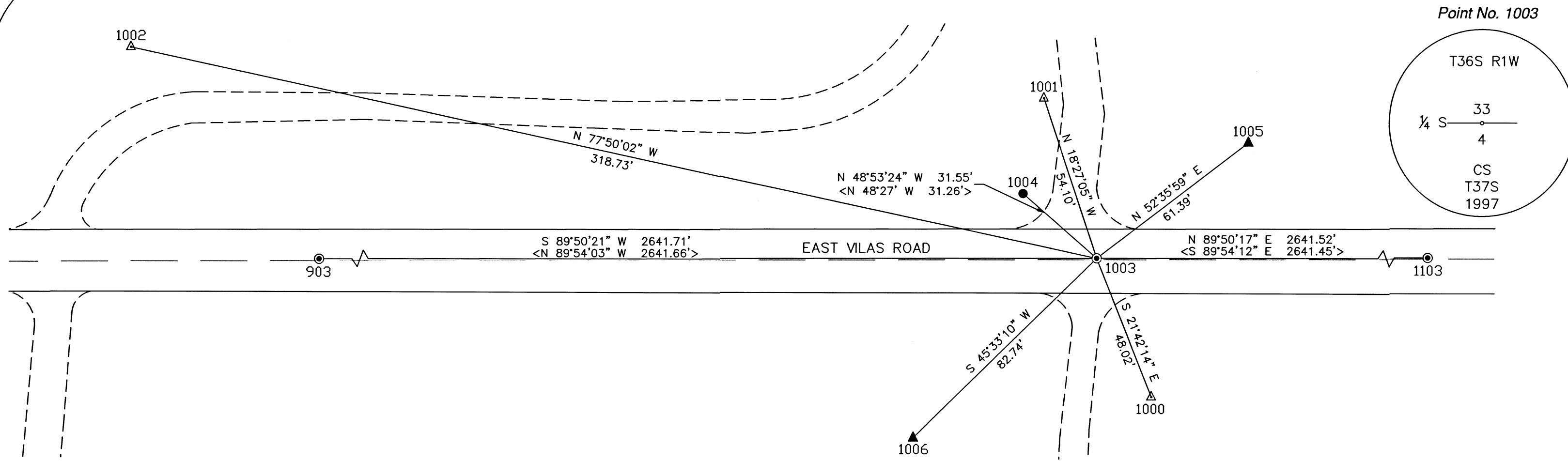


Scale: 1"=30'



Jackson County Surveyor
Scott Fein, PLS, CWRE

10 S. Oakdale Ave., Medford, OR 97501 (541) 774-6191	
Field work was performed: March 2020	Reviewed By: SDF 3/27/20 OR 3/27/20
Field Crew: OR, JH	CS Job File: N.A.
Drawn By: OR 3/27/20	Approved: SDF 3/27/20
sv-base vilas rd mos sheets 2-3.DWG SHEET 2 OF 3	



Point No. 1003

Detail "D"

Township 36 & 37 South, Range 1 West
 Quarter corner common to Sections 33 & 4
 Point No. 1003
 GCDB 340100

Point	Northing	Easting	Description
1000	233301.788	301055.738	set 5/8in rbr w/acap jcs
1001	233397.728	301020.855	set 5/8in rbr w/acap jcs
1002	233413.578	300726.409	set 5/8in rbr w/acap jcs
1003	233346.408	301037.978	fld 2.5ins bd jcs
1004	233367.152	301014.207	fld 5/8in rbr w/ypc jcs
1005	233383.692	301086.743	set 5/8in rbr w/acap jcs
1006	233288.471	300978.912	set 5/8in rbr w/acap jcs

1000) PRIMARY GPS CONTROL POINT - SEE SHEET 1 - SET 5/8 X 24 INS. REBAR WITH 2 INS. DIAMETER ALUMINUM CAP MARKED "JACKSON COUNTY SURVEYOR" ON SOUTH SIDE OF EAST VILAS ROAD, 35 FEET SOUTH OF ASPHALT EDGE, 25 FEET EAST OF CENTERLINE OF GRAVEL ROAD, 20 FEET SE OF GATE POST

1001) PRIMARY GPS CONTROL POINT - SEE SHEET 1 - SET 5/8 X 24 INS. REBAR WITH 2 INS. DIAMETER ALUMINUM CAP MARKED "JACKSON COUNTY SURVEYOR" ON NORTH SIDE OF EAST VILAS ROAD, 45 FEET NORTH OF ASPHALT EDGE, 10 FEET WEST OF CENTERLINE OF GRAVEL ROAD, 27 FEET NORTH OF GATE POST

1002) PRIMARY GPS CONTROL POINT - SEE SHEET 1 - SET 5/8 X 24 INS. REBAR WITH 2 INS. DIAMETER ALUMINUM CAP MARKED "JACKSON COUNTY SURVEYOR" ON NORTH SIDE OF EAST VILAS ROAD, 60 FEET NORTH OF ASPHALT EDGE, ON PROJECTED CENTERLINE OF NORTH-SOUTH BEARING CANAL, 20 FEET NE OF CENTERLINE OF GRAVEL ROAD

1003) FOUND 2 1/2 INS. DIAMETER BRASS DISC, 3 INS. DEEP IN ASPHALT, NO RECORD FOUND, MARKED AS SHOWN

1004) FOUND 5/8 IN. DIAMETER REBAR WITH YELLOW PLASTIC CAP MARKED "JACKSON CS", EXPOSED 1 IN. AND SLIGHTLY LOOSE, PER JCS SECOND RE-ESTABLISHMENT DATED 1988

1005) SET 5/8 X 24 INS. REBAR WITH 2 INS. DIAMETER ALUMINUM CAP MARKED "JACKSON COUNTY SURVEYOR", 5 INS. DEEP, 25 FEET NORTH OF ASPHALT EDGE OF EAST VILAS ROAD, 50 FEET EAST OF CENTERLINE OF GRAVEL ROAD

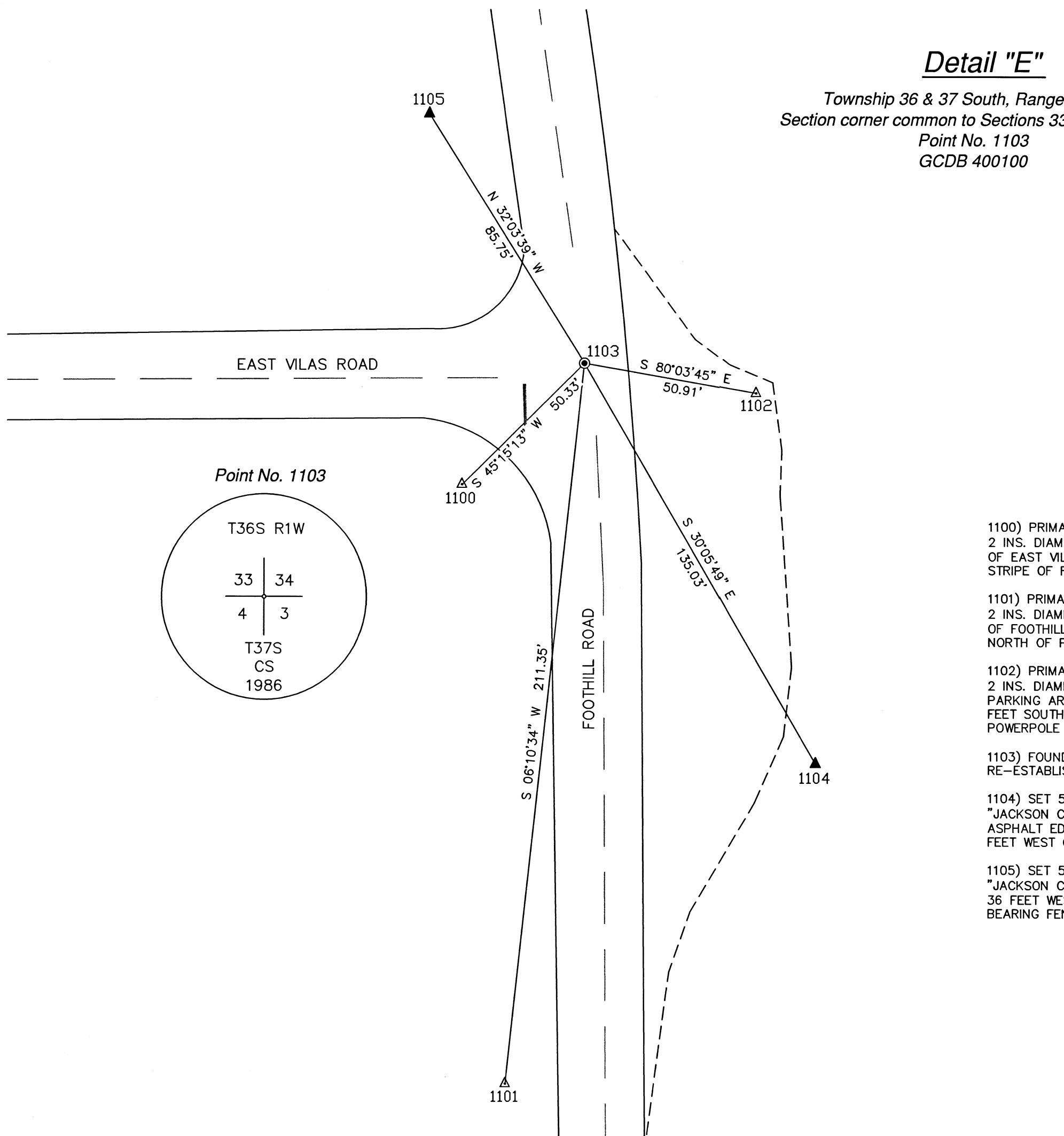
1006) SET 5/8 X 24 INS. REBAR WITH 2 INS. DIAMETER ALUMINUM CAP MARKED "JACKSON COUNTY SURVEYOR", 5 INS. DEEP, 45 FEET SOUTH OF ASPHALT EDGE OF EAST VILAS ROAD, 30 FEET WEST OF TOE OF BERM FOR GRAVEL ROAD, NEAR NE CORNER OF PEAR ORCHARD

903) SECTION CORNER COMMON TO SECTIONS 32, 33, 4, & 5, TOWNSHIP 36 & 37 SOUTH, RANGE 1 WEST - SEE DETAIL "C" SHEET 2 FOR MONUMENT INFORMATION

1103) SECTION CORNER COMMON TO SECTIONS 33, 34, 3, & 4, TOWNSHIP 36 & 37 SOUTH, RANGE 1 WEST - SEE DETAIL "E" SHEET 3 FOR MONUMENT INFORMATION

Detail "E"

Township 36 & 37 South, Range 1 West
 Section corner common to Sections 33, 34, 3, and 4
 Point No. 1103
 GCDB 400100



Point	Northing	Easting	Description
1100	233318.447	303643.737	set 5/8in rbr w/acap jcs
1101	233143.759	303656.747	set 5/8in rbr w/acap jcs
1102	233345.095	303729.627	set 5/8in rbr w/acap jcs
1103	233353.880	303679.485	fld 2.5ins bd jcs
1104	233237.054	303747.198	set 5/8in rbr w/acap jcs
1105	233426.554	303633.966	set 5/8in rbr w/acap jcs

1100) PRIMARY GPS CONTROL POINT - SEE SHEET 1 - SET 5/8 X 24 INS. REBAR WITH 2 INS. DIAMETER ALUMINUM CAP MARKED "JACKSON COUNTY SURVEYOR" AT SW CORNER OF EAST VILAS ROAD AND FOOTHILL ROAD, 38 FEET WEST OF PAINTED CENTERLINE STRIPE OF FOOTHILL, 12 FEET SOUTH OF STOP SIGN

1101) PRIMARY GPS CONTROL POINT - SEE SHEET 1 - SET 5/8 X 24 INS. REBAR WITH 2 INS. DIAMETER ALUMINUM CAP MARKED "JACKSON COUNTY SURVEYOR", ON WEST SIDE OF FOOTHILL ROAD, 18 FEET EAST OF SE CORNER OF WOODEN BUILDING, 100 FEET NORTH OF POWERPOLE NO. B28118

1102) PRIMARY GPS CONTROL POINT - SEE SHEET 1 - SET 5/8 X 24 INS. REBAR WITH 2 INS. DIAMETER ALUMINUM CAP MARKED "JACKSON COUNTY SURVEYOR", IN GRAVEL PARKING AREA ON EAST SIDE OF FOOTHILL ROAD, 35 FEET EAST OF ASPHALT EDGE, 5 FEET SOUTH OF PROJECTED CENTERLINE OF EAST VILAS ROAD, 30 FEET SOUTH OF POWERPOLE NO. B11181

1103) FOUND 2 1/2 INS. DIAMETER BRASS DISC, FLUSH IN ASPHALT, PER JCS FOURTH RE-ESTABLISHMENT DATED 1986, MARKED AS SHOWN

1104) SET 5/8 X 24 INS. REBAR WITH 2 INS. DIAMETER ALUMINUM CAP MARKED "JACKSON COUNTY SURVEYOR", ON EAST SIDE OF FOOTHILL ROAD, 50 FEET EAST OF ASPHALT EDGE, 110 FEET SOUTH OF PROJECTED CENTERLINE OF EAST VILAS ROAD, 2 FEET WEST OF NORTH-SOUTH BEARING FENCE

1105) SET 5/8 X 24 INS. REBAR WITH 2 INS. DIAMETER ALUMINUM CAP MARKED "JACKSON COUNTY SURVEYOR", 75 FEET NORTH OF CENTERLINE OF EAST VILAS ROAD, 36 FEET WEST OF CENTERLINE OF FOOTHILL ROAD, 3 FEET EAST OF NORTH-SOUTH BEARING FENCE

LEGEND - SHEET 3

- = FOUND PUBLIC LAND SURVEY SYSTEM (P.L.S.S.) MONUMENT AS NOTED
- ▲ = PRIMARY GPS CONTROL POINTS - FOUND OR SET MONUMENT AS NOTED
- ▲ = SET CONTROL/REFERENCE POINT AS NOTED
- = FOUND MONUMENT AS NOTED
- JCS = JACKSON COUNTY SURVEYOR
- INS. = INCHES
- < > = RECORD PER JCS SECOND RE-ESTABLISHMENT DATED 1988



REGISTERED
**PROFESSIONAL
 LAND SURVEYOR**

Scott D. Fein
 OREGON
 NOVEMBER 10, 2010
 SCOTT D. FEIN
 83181
 Expires 12/31/2021

Scale: 1"=30'

RECEIVED
 Date 3/1/20 By RB
 This survey consists of:
 3 sheet(s) Map
 1 page(s) Narrative
**JACKSON COUNTY
 SURVEYOR**

Jackson County Surveyor
 Scott Fein, PLS, CWRE

10 S. Oakdale Ave., Medford, OR 97501 (541) 774-6191	
Field work was performed: March 2020	Reviewed By: SDF 3/27/20 OR 3/27/20
Field Crew: OR, JH	CS Job File: N.A.
Drawn By: OR 3/27/20	Approved: SDF 3/27/20
sv-base vilas rd mos sheets 2-3.DWG SHEET 3 OF 3	